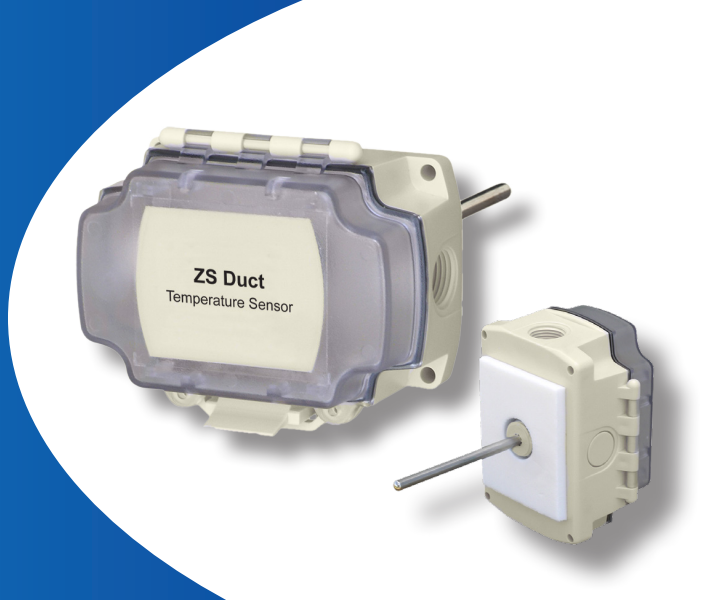




i-Vu® Building Automation System ZS Duct Sensors



The Carrier communicating ZS duct sensors line is designed to measure the air temperature and/or humidity in ductwork. All duct sensors feature closed cell foam to seal the insertion hole and to absorb vibration. Mounting tabs allow for easy installation onto the wall of the duct. The units are built to withstand high humidity and condensation environments.

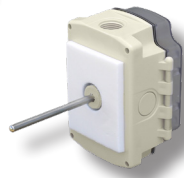


The ZS duct sensors connect directly to the dedicated sensor network (Rnet) of a Carrier i-Vu controller. This communicating sensor network supports up to 15 x ZS sensors through a single port, eliminating the need to consume multiple inputs on the controller.

The communicating ZS duct sensors are available in different models, including temperature only, temperature + humidity, and temperature averaging.



ZS Duct
Temperature Sensor



Back Mount



ZS Duct
Temp + Humidity Sensor



Back Mount



ZS Duct
Averaging Sensor

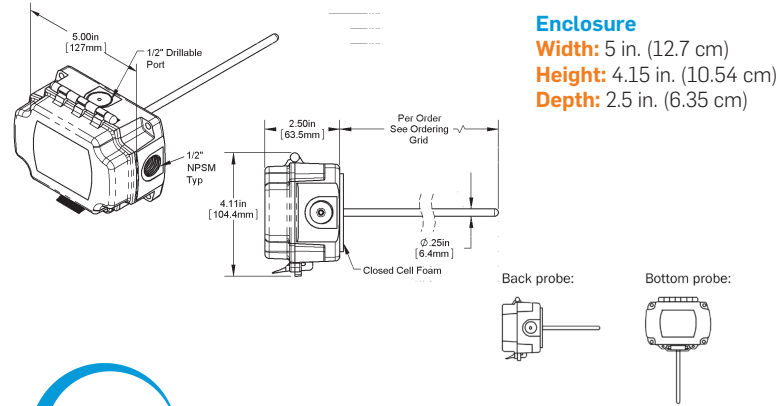
Back Mount

Part # (Back Mounting)	Part # (Bottom Mounting)	Description	Sensing	Probe Length
ZSD-B-4-6-B	ZSD-S-4-6-B	ZS Duct, Temp Only, 4" probe	Temp	4" (inches)
ZSD-B-8-6-B	ZSD-S-8-6-B	ZS Duct, Temp Only, 8" probe	Temp	8" (inches)
ZSD-BH-6-6-B	ZSD-SH-6-6-B	ZS Duct, Temp + Humidity	Temp/Humidity	6" standard
ZSA-B-8-6-B	ZSA-S-8-6-B	ZS Averaging, 8' probe	Temp	8' (feet)
ZSA-B-12-6-B	ZSA-S-12-6-B	ZS Averaging, 12' probe	Temp	12' (feet)
ZSA-B-24-6-B	ZSA-S-24-6-B	ZS Averaging, 24' probe	Temp	24' (feet)

Specifications

Sensing Element	Temperature	Range	20° to 120° F (-5° to 50° C)
		Accuracy	±0.36° F (0.2° C)
Humidity	Humidity	Range	10% to 90%
		Accuracy	Humidity is calibrated at 73° F (23° C) ±2.0% typical. Less than 0.5% drift per year.
Sensor	Temperature	Range	20° to 120° F (-5° to 50° C)
		Accuracy	±0.9° F (0.5° C)
Humidity	Humidity	Range	10% to 90%
		Accuracy	Humidity is calibrated at 73° F (23° C) ±2.0% typical. Less than 0.5% drift per year.
Enclosure Material	Polycarbonate, UL94V-0		
Enclosure Rating	NEMA 4, IP66, UV rated		
Probe	Temperature sensor probe: 304 SS / 0.25 in. (0.64 cm) diam / Length (4 or 8 in.) specified at time of order Temperature/humidity sensor probe: ABS with SS filter / 1.0 in. (2.5 cm) diameter / 6 in. (13.5 cm) length Averaging temperature sensor probe. Bendable aluminum / 3/16 in. diam / Length of 8, 12, or 24 ft. specified at time of order.		
Power Requirements	12 Vdc @ 6 mA		
Power Supply	The 4-conductor Rnet cable from a controller supplies + 12 Vdc @ 210 mA. For additional power, use an external power supply. Use the above power requirements to calculate the size of the external power supply. The controller and the external power supply must share a common ground.		
Communication	115 kbps		
Environmental Operating Range	-40 to 158° F (-40 to 70° C)		
Mounting	Duct mount with #8 sheet metal screws		
Regulatory	FCC Part 15-Subpart B-Class B, CE		
Dimensions			

Temperature Sensor



Temperature/Humidity Sensor

