

# SMMSu VRF u-Series Outdoor Unit MMY-UP1921HT6P-UL—Heat Pump

**TOSHIBA**  
*Carrier*

## Submittal Data

Job Name \_\_\_\_\_ Location \_\_\_\_\_

Tag \_\_\_\_\_



A230331

### SMMSu VRF Heat Pump Features

- Energy-efficient priority design
- Super-efficient heat exchanger
- Refrigerant cooling inverter system
- Intelligent VRF control
- Less refrigerant
- Space efficient design
- Configuration flexibility
- Wider Operating temperature range
- Comprehensive System construction solution
- Comprehensive Service solution

Header Unit Model		MMY-UP1921HT6P-UL
Outdoor Unit Model Name		MUP0961HT6P-UL + MUP0961HT6P-UL
<b>PERFORMANCE</b>		
Nominal Cooling Capacity†	Btu/h	192,000
Nominal Heating Capacity†	Btu/h	216,000
Maximum number of indoor units		34
Total Connected Indoor Unit Capacity		288
<b>COOLING EFFICIENCY†</b>		
EER (Non-Ducted)	Btu/Wh	12.7
Power Consumption (Non-Ducted)	kW	14.40
EER (Ducted)	Btu/Wh	12.7
Power Consumption (Ducted)	kW	14.42
<b>HEATING EFFICIENCY†</b>		
COP (Non-Ducted)	Btu/Wh	4.4
Power Consumption (Non-Ducted)	kW	13.73
COP (Ducted)		4.4
Power Consumption (Ducted)	kW	13.59
<b>FAN</b>		
Fan Type		Propeller
Airflow	CFM	6180 + 6180
Motor Output	kW	0.59 x 1
<b>ELECTRICAL</b>		
Power Supply	V/Ph/Hz	460/3/60
MCA	A	17.5 + 17.5
MOCP	A	20.0 + 20.0

COMPRESSORS			
Type (Number)	Hermetic Twin Rotary (1)		
Motor Output	kW	6.2	
PHYSICAL DATA			
Pipe Connection Size - Liquid (High Pressure)	in.	1/2 (Brazeing)	1/2 (Brazeing)
Pipe Connection Size - Gas (Low Pressure)	in.	7/8 (Brazeing)	7/8 (Brazeing)
Refrigerant	R-410A		
Factory Charge††	lb	13.2 + 13.2	
External Finish	Munsell 1Y8.5/0.5		
Unit Width	in.	39.6 + 39.6	
Unit Height	in.	66.5 + 66.5	
Unit Depth	in.	31.1 + 31.1	
Unit Net Weight	lb	533 + 533	

### LEGEND

<b>EER</b>	—	Energy Efficiency Ratio
<b>COP</b>	—	Coefficient of Performance
<b>MCA</b>	—	Minimum Circuit Amps
<b>MOCP</b>	—	Maximum Overcurrent Protection

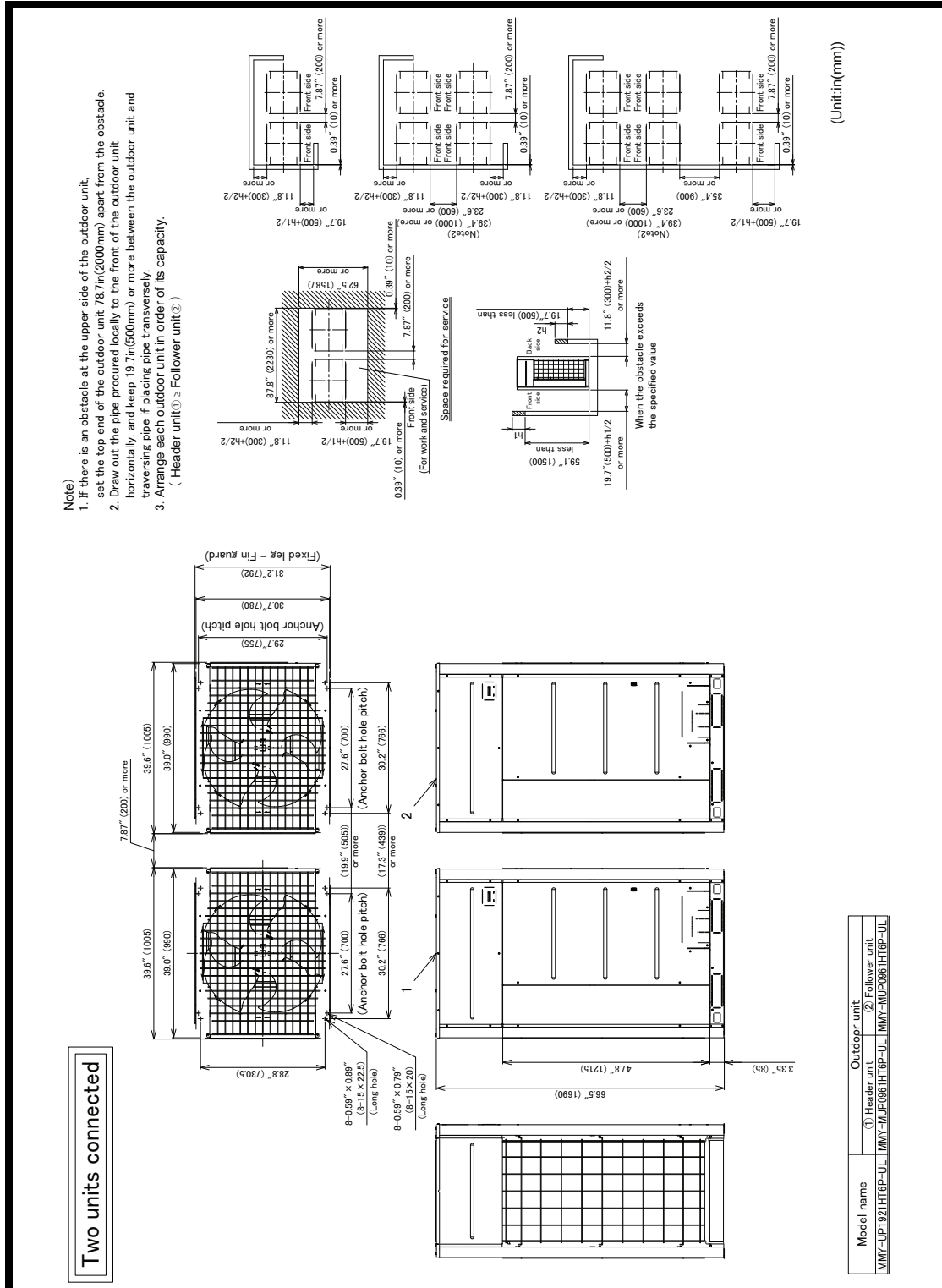
†Rated per AHRI (Air-Conditioning, Heating and Refrigeration Institute) 210/240 Standard.

Cooling: Indoor 80°F (27°C) db/67°F (20°C) wb; Outdoor 95°F (35°C) db

Heating: Indoor 70°F (21°C) db; Outdoor 47°F (8°C) db/43°F (6°C) wb

††Additional charge required.

# OUTDOOR UNIT HEAT PUMP MMY-UP1921HT6P-UL DIMENSIONAL DRAWING



A230333

