

SMMSu VRF u-Series Outdoor Unit MMY-UP4801HT6P-UL—Heat Pump

TOSHIBA
Carrier

Submittal Data

Job Name _____ Location _____

Tag _____



A230331

SMMSu VRF Heat Pump Features

- Energy-efficient priority design
- Super-efficient heat exchanger
- Refrigerant cooling inverter system
- Intelligent VRF control
- Less refrigerant
- Space efficient design
- Configuration flexibility
- Wider Operating temperature range
- Comprehensive System construction solution
- Comprehensive Service solution

| | |
|-------------------------|--------------------------------------------------------|
| Header Unit Model | MMY-UP4801HT6P-UL |
| Outdoor Unit Model Name | MUP1681HT6P-UL + MUP1681HT6P-UL + MUP1441HT6P-UL |

PERFORMANCE

| | | |
|--------------------------------------|-------|---------|
| Nominal Cooling Capacity† | Btu/h | 480,000 |
| Nominal Heating Capacity† | Btu/h | 540,000 |
| Maximum number of indoor units | | 74 |
| Total Connected Indoor Unit Capacity | | 720 |

COOLING EFFICIENCY†

| | | |
|--------------------------------|--------|-------|
| EER (Non-Ducted) | Btu/Wh | 9.97 |
| Power Consumption (Non-Ducted) | kW | 44.50 |
| EER (Ducted) | Btu/Wh | 9.50 |
| Power Consumption (Ducted) | kW | 44.04 |

HEATING EFFICIENCY†

| | | |
|--------------------------------|--------|-------|
| COP (Non-Ducted) | Btu/Wh | 3.20 |
| Power Consumption (Non-Ducted) | kW | 45.88 |
| COP (Ducted) | Btu/Wh | 3.23 |
| Power Consumption (Ducted) | kW | 42.68 |

FAN

| | | |
|--------------|-----|--------------------------------|
| Fan Type | | Propeller |
| Airflow | CFM | 8670 + 8670 + 8650 |
| Motor Output | kW | 0.73 x 2 + 0.73 x 2 + 0.43 x 2 |

ELECTRICAL

| | | |
|--------------|---------|--------------------|
| Power Supply | V/Ph/Hz | 460/3/60 |
| MCA | A | 27.4 + 27.4 + 24.6 |
| MOCP | A | 40.0 + 40.0 + 35.0 |

COMPRESSORS

| | | |
|---------------|----|----------------------------|
| Type (Number) | | Hermetic Triple Rotary (3) |
| Motor Output | kW | 12.10 + 12.10 + 9.69 |

PHYSICAL DATA

| | | | | |
|-----------------------------------------------|-----|--------------------|-----------------|-----------------|
| Pipe Connection Size - Liquid (High Pressure) | in. | 5/8 (Brazing) | 5/8 (Brazing) | 5/8 (Brazing) |
| Pipe Connection Size - Gas (Low Pressure) | in. | 1-1/8 (Brazing) | 1-1/8 (Brazing) | 1-1/8 (Brazing) |
| Refrigerant | | R-410A | | |
| Factory Charge†† | lb | 19.8 + 19.8 + 19.8 | | |
| External Finish | | Munsell 1Y8.5/0.5 | | |
| Unit Width | in. | 51.4 + 51.4 + 51.4 | | |
| Unit Height | in. | 66.5 + 66.5 + 66.5 | | |
| Unit Depth | in. | 31.1 + 31.1 + 31.1 | | |
| Unit Net Weight | lb | 774 + 774 + 721 | | |

LEGEND

| | | |
|-------------|---|--------------------------------|
| EER | — | Energy Efficiency Ratio |
| COP | — | Coefficient of Performance |
| MCA | — | Minimum Circuit Amps |
| MOCP | — | Maximum Overcurrent Protection |

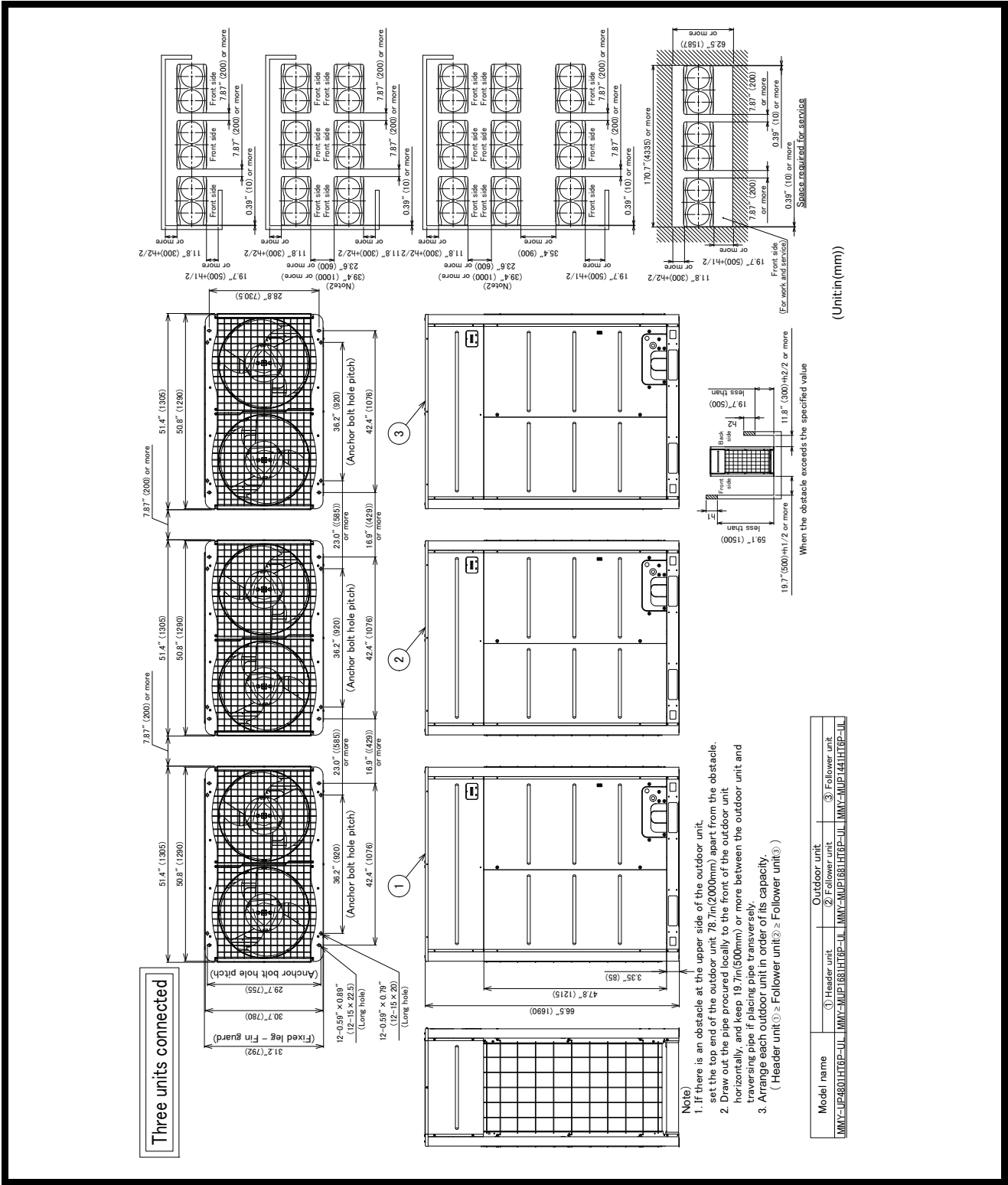
†Rated per AHRI (Air-Conditioning, Heating and Refrigeration Institute) 1230 Standard.

Cooling: Indoor 80°F (27°C) db/67°F (20°C) wb; Outdoor 95°F (35°C) db

Heating: Indoor 70°F (21°C) db; Outdoor 47°F (8°C) db/43°F (6°C) wb

††Additional charge required.

OUTDOOR UNIT HEAT PUMP MMY-UP4801HT6P-UL
DIMENSIONAL DRAWING



A230338