

# Residential & Light Commercial Heat Pump System

**TOSHIBA**  
*Carrier*

Indoor Model: RAV-SM242KRTP-UL  
Outdoor Model: RAV-SP242AT2P-UL

## Submittal Data

Job Name \_\_\_\_\_ Location \_\_\_\_\_  
Tag \_\_\_\_\_



A221033

### OUTDOOR UNIT STANDARD FEATURES

- Digital inverter compressor technology
- System can operate in cooling only mode with heating locked out
- Line lengths up to 164 ft
- Low-ambient cooling down to 5°F
- System diagnostics

OUTDOOR UNIT MODEL		RAV-SP242AT2P-UL
SYSTEM PERFORMANCE		
Nominal Cooling Capacity†	Btu/h	24,000
SEER		21.9
EER		11.7
Nominal Heating Capacity†	Btu/h	27,000
HSPF		10.0
COP		10.6
REFRIGERANT LINES		
Total Piping Length	ft	164
Vertical Lift	ft	98
Suction Line Size	in	5/8
Liquid Line Size	in	3/8
AMBIENT OPERATING RANGE		
Cooling DB Min ~ Max	F	5~115
Heating DB Min ~ Max	F	-13~59
REFRIGERANT		R410A
FACTORY CHARGE	lbs	5.5

AIRFLOW		
Cooling	CFM	2300
Heating	CFM	2220
SOUND PRESSURE LEVEL		
Cooling	db(A)	52
Heating	db(A)	54
ELECTRICAL		
Power Supply	V/Ph/Hz	208-230/1/60
Minimum Circuit Amps (MCA)	A	17
Recommended Fuse Size	A	20
Maximum Over Current Protection (MOCP)	A	25
PHYSICAL DATA		
Unit Width	in	35-1/4
Unit Height	in	35
Unit Length	in	12-5/8
Unit Weight - Net / Gross	lbs	141 / 152

### Legend

**db** — Dry Bulb  
**SEER** — Seasonal Energy Efficiency Ratio  
**HSPF** — Heating Seasonal Performance Factor  
**wb** — Wet Bulb

†Rated per AHRI (Air-Conditioning, Heating and Refrigeration Institute) 210/240 Standard.  
Cooling: Indoor 80°F (27°C) db/67°F (20°C) wb; Outdoor 95°F (35°C) db  
Heating: Indoor 70°F (21°C) db; Outdoor 47°F (8°C) db/43°F (6°C) wb



#### RAV-SM242KRTP-UL HIGH WALL FEATURES

- R-410A refrigerant
- Five sizes from 12,000 to 36,000 Btu/h
- Quiet operation (as low as 35 dBA)
- Auto or manually set three fan speeds
- Easy to remove cleanable filter

INDOOR UNIT MODEL		RAV-SM242KRTP-UL
PERFORMANCE		
Cooling Rated Capacity	Btu/h	24,000
Heating Rated Capacity	Btu/h	34,000
Fan Type (Qty)		Turbo (1)
Airflow (H/M/L)	CFM	706/530/353
Sound Pressure (H/M/L)	dBA	46/41/35
ELECTRICAL		
Power Supply	V/Ph/Hz	From ODU
FILTER		
Type		Washable
Quantity		2
MERV Corresponding Value		5
Dimensions (W x L x D)	in.	15-3/4 x 16-3/8 x 1/16

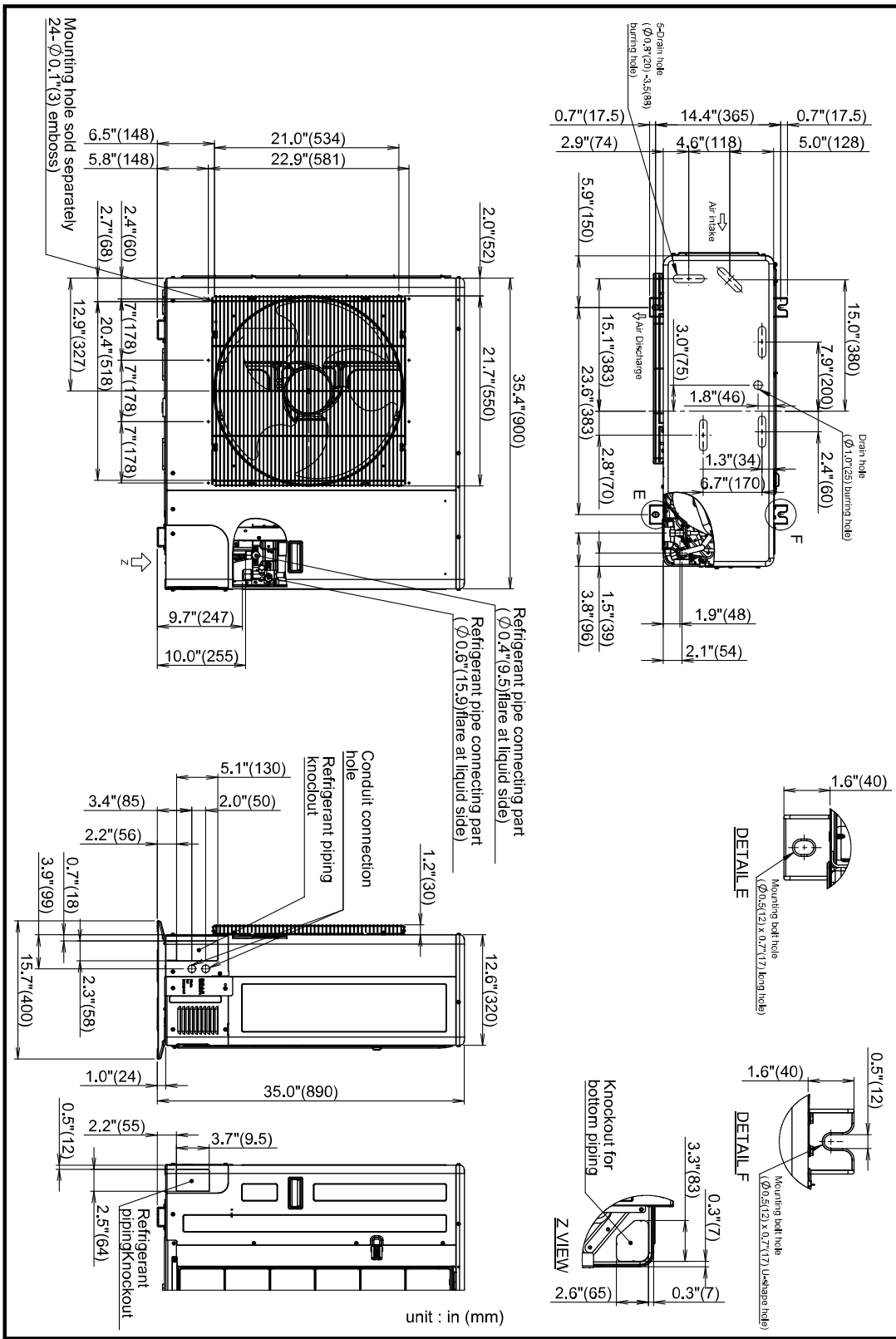
PHYSICAL DATA		
Pipe Connection Size - Liquid (High Pressure)	in	3/8 (Flare)
Pipe Connection Size - Gas (Low Pressure)	in	5/8 (Flare)
Condensate Drain Connection	in	7/8
Refrigerant		R-410A
External Finish		Munsell 2.5GY9.0/0.5
Unit Width	in	41-3/8
Unit Height	in	12-5/8
Unit Depth	in	9-7/8
Unit Net Weight	lb	33
MOTOR		
Motor Type		DC
Motor Watts	W	30

#### ACCESSORIES

- ☐ Wired Remote Controller (7-Day Programmable) RBC-AMS54E-UL
- ☐ Simple Wired Remote Controller RBC-AS41UL
- ☐ Remote Sensor TCB-TC41LUL
- ☐ Wired Remote Controller RBC-AMT32UL
- ☐ Condensate Drain Pipe Kit 53DS-900---118

## DIMENSIONAL DRAWING

### OUTDOOR UNIT RAV-SP242AT2P-UL

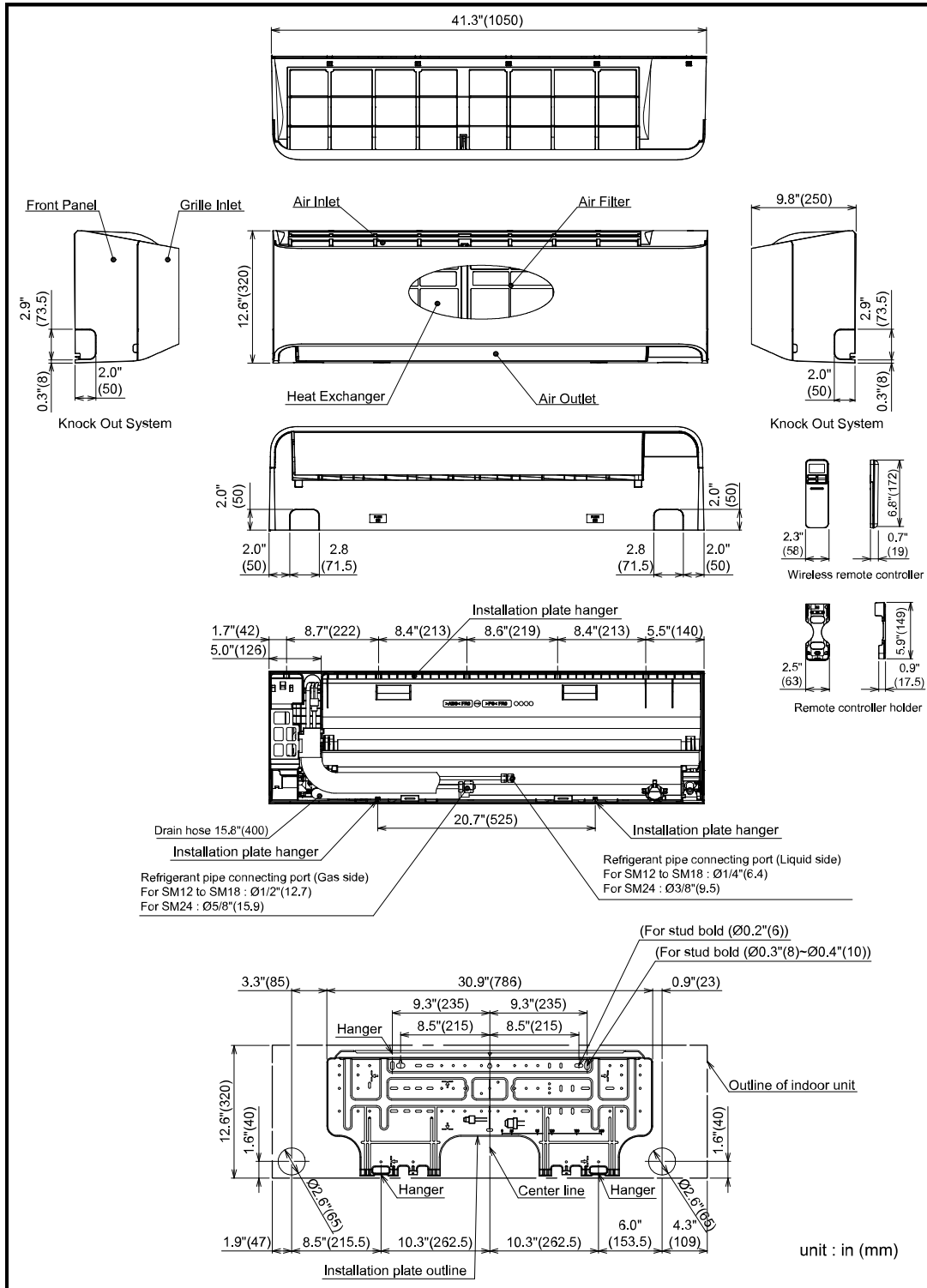


A221034



# DIMENSIONAL DRAWING

## INDOOR UNIT HIGH WALL RAV-SP242KRTP-UL



A221022

