

SHRMe RBM-Y0961FUPUL–Single Port Flow

TOSHIBA
Carrier

Submittal Data

Job Name _____ Location _____

Tab _____



Multiport Flow Selector Features

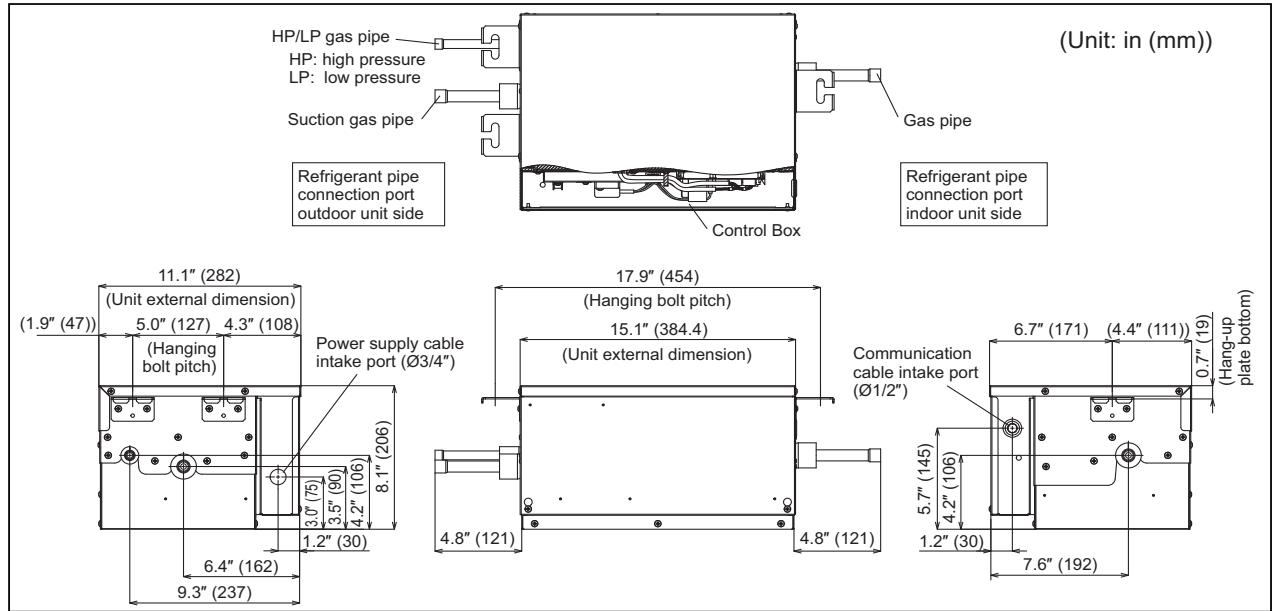
- Maximum piping length between the indoor unit and the FS box is 115 ft.
- Multiple indoor units can be connected to one box

MODEL NAME	RBM-Y0961FUPUL	
POWER SUPPLY	208-230/1/60	
MCA	A	0.5
MOCP	A	15
Connectible indoor unit capacity per 1 branch	kBtu/h	61 to 96
DIMENSIONS	Height (in)	8.1
	Width (in)	15.2
	Depth (in)	11.1
TOTAL WEIGHT	lbs	22
Connecting Port Diameter (Indoor Unit Side Downstream)	Gas Pipe (in)	7/8
Connecting Port Diameter (Outdoor Unit Side Upstream)	Gas Pipe (HP/LP) (in)	3/4
	Gas Side (Suction) (in)	7/8
Connection	Braze	

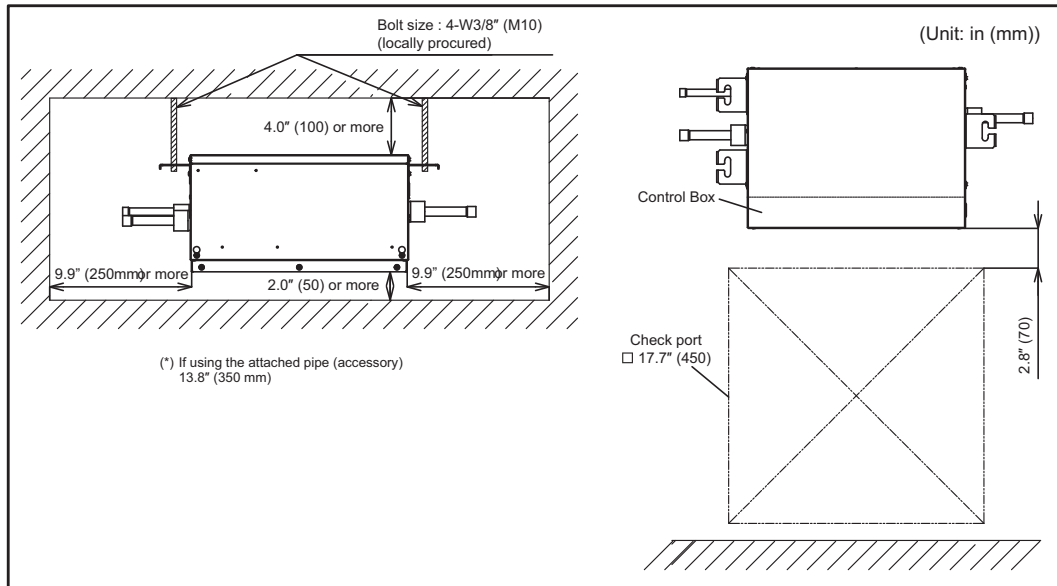
LEGEND

MCA — Minimum Circuit Amps
MOCP — Maximum Over Current Protection

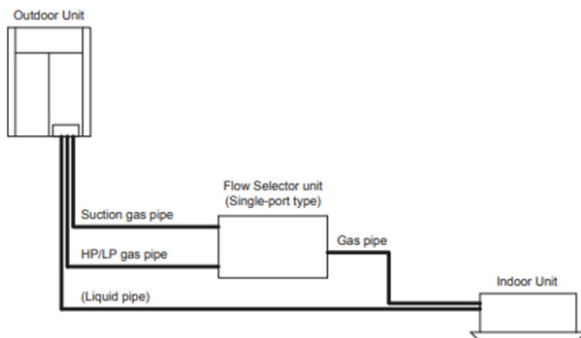
SINGLE PORT FLOW SELECTOR (RBM-Y0961FUPUL) DIMENSIONS



SINGLE PORT FLOW SELECTOR (RBM-Y0961FUPUL) CLEARANCE



PIPING



The single port flow selector box does not have a liquid refrigerant piping connection. Liquid refrigerant piping should connect directly to the indoor unit when using the single port flow selector box