

VRF Indoor Unit 45VML030---3—Low Static Duct



Submittal Data

Job Name _____ Location _____
Tag _____



STANDARD FEATURES

- Rear Return Air Opening is Standard and Bottom Return is Optional
- Three Fan Speeds - High, Medium, and Low
- Knockout for Outside Air
- Built-in Drain Pump from Factory
- Built in EEV (Electronic Expansion Valve) for Installation Ease
- Internally Installed A2L Refrigerant Leak Sensor

INDOOR UNIT MODEL		45VML030---3
PERFORMANCE		
Cooling Rated Capacity	Btu/h	30,000
Heating Rated Capacity	Btu/h	34,000
Airflow (H / M / L)	CFM	858 / 713 / 568
Sound Pressure (H / M / L)	dBA	40 / 35.5 / 29
ELECTRICAL		
Power Supply	V/Ph/Hz	208-230/1/60
Fan Motor Rated Motor (Output)	W	60
Minimum Circuit Amps (MCA)	A	1.94
Maximum Overcurrent Protection	A	15.0
Motor Type		DC

PHYSICAL DATA		
Pipe Connection Size - Liquid	in.	3/8
Pipe Connection Size - Suction	in.	5/8
Pipe Connection Size - Drain	in.	1
External Static Pressure (ESP)	in. wg	0.08(0-0.2)
Refrigerant		R-454B
Unit Width	in.	63
Unit Height	in.	7-3/4
Unit Depth	in.	18-7/8
Net Unit Weight	lb	67.2

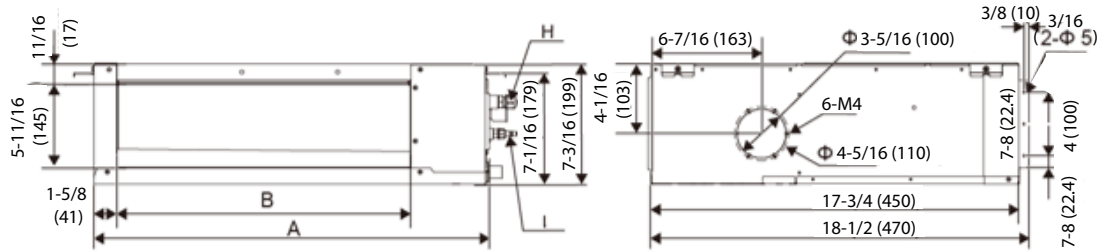
ACCESSORIES

- ☐ Wireless Remote Controller 45VM900001
☐ Wired Remote Controller - Non-Prog. 45VM900002

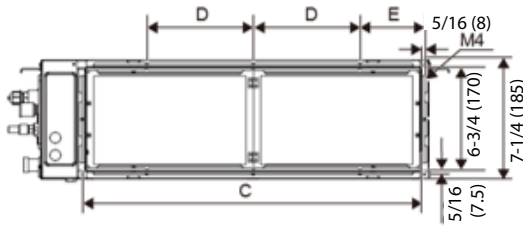
DIMENSIONAL DRAWING

INDOOR UNIT LOW STATIC DUCT 45VML030---3

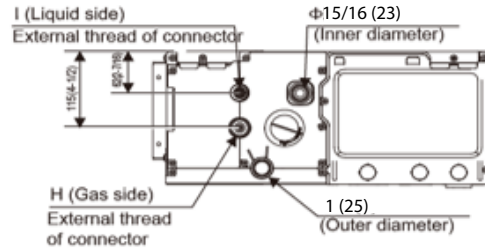
External dimension, air outlet size, and size of fresh air outlet:



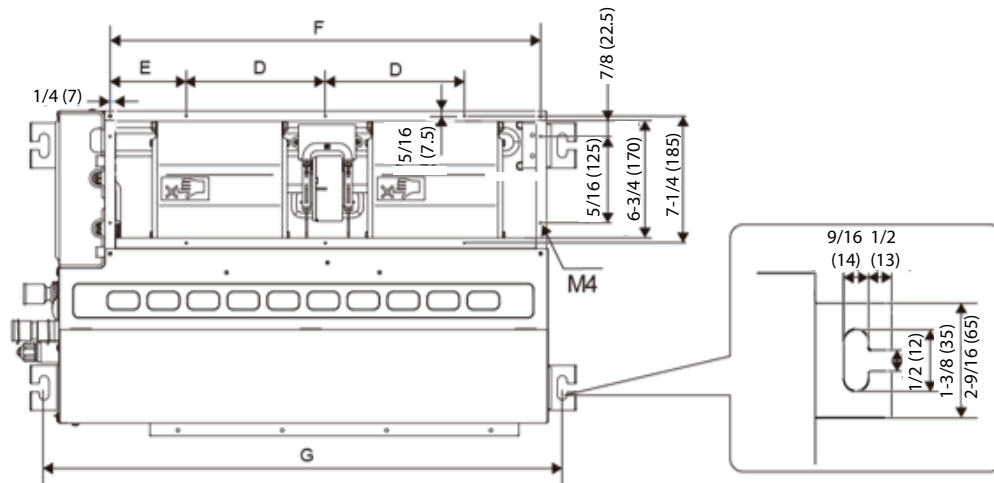
Size of return air inlet (back return air mode):



Dimension of pipe and water pipe:



Size of return air inlet (bottom return air mode), and the distance between the lugs:



Capacity (kBTU/h)	A	B	C	D	E	F	G	H	I
30	63 (1600)	55-1/8 (1400)	59-1/4 (1505)	8-7/8 (200)	6-1/4 (159.5)	59-3/4 (1519)	64-3/4 (1645)	7/8-14 UNF	5/8-18 UNF

Note: All dimensions are shown in inches

