

Residential & Light Commercial Heat Pump System

TOSHIBA
Carrier

Indoor Model: RAV-SM182CTP-UL

Outdoor Model: RAV-SP182AT2P-UL

Submittal Data

Job Name _____ Location _____
Tag _____



OUTDOOR UNIT STANDARD FEATURES

- Digital inverter compressor technology
- System can operate in cooling only mode with heating locked out
- Line lengths up to 164 ft
- Low-ambient cooling down to 5°F
- System diagnostics

OUTDOOR UNIT MODEL		RAV-SP182AT2P-UL
SYSTEM PERFORMANCE		
Nominal Cooling Capacity†	Btu/h	18,000
SEER		22.9
EER		11.5
Nominal Heating Capacity†	Btu/h	20,000
HSPF		11.0
COP		13.1
REFRIGERANT LINES		
Total Piping Length	ft	164
Vertical Lift	ft	98
Suction Line Size	in	1/2
Liquid Line Size	in	1/4
AMBIENT OPERATING RANGE		
Cooling DB Min ~ Max	F	5~115
Heating DB Min ~ Max	F	-13~59
REFRIGERANT		R410A
FACTORY CHARGE	lbs	3.8

AIRFLOW		
Cooling	CFM	1590
Heating	CFM	1590
SOUND PRESSURE LEVEL		
Cooling	db(A)	48
Heating	db(A)	52
ELECTRICAL		
Power Supply	V/Ph/Hz	208-230/1/60
Minimum Circuit Amps (MCA)	A	14
Recommended Fuse Size	A	15
Maximum Over Current Protection (MOCP)	A	25
PHYSICAL DATA		
Unit Width	in	30-3/4
Unit Height	in	21-3/4
Unit Length	in	11-3/8
Unit Weight - Net / Gross	lbs	99 / 106

Legend

db — Dry Bulb
SEER — Seasonal Energy Efficiency Ratio
HSPF — Heating Seasonal Performance Factor
wb — Wet Bulb

†Rated per AHRI (Air-Conditioning, Heating and Refrigeration Institute) 210/240 Standard.
Cooling: Indoor 80°F (27°C) db/67°F (20°C) wb; Outdoor 95°F (35°C) db
Heating: Indoor 70°F (21°C) db; Outdoor 47°F (8°C) db/43°F (6°C) wb



A221017

RAV-SM182CTP-UL UNDER CEILING FEATURES

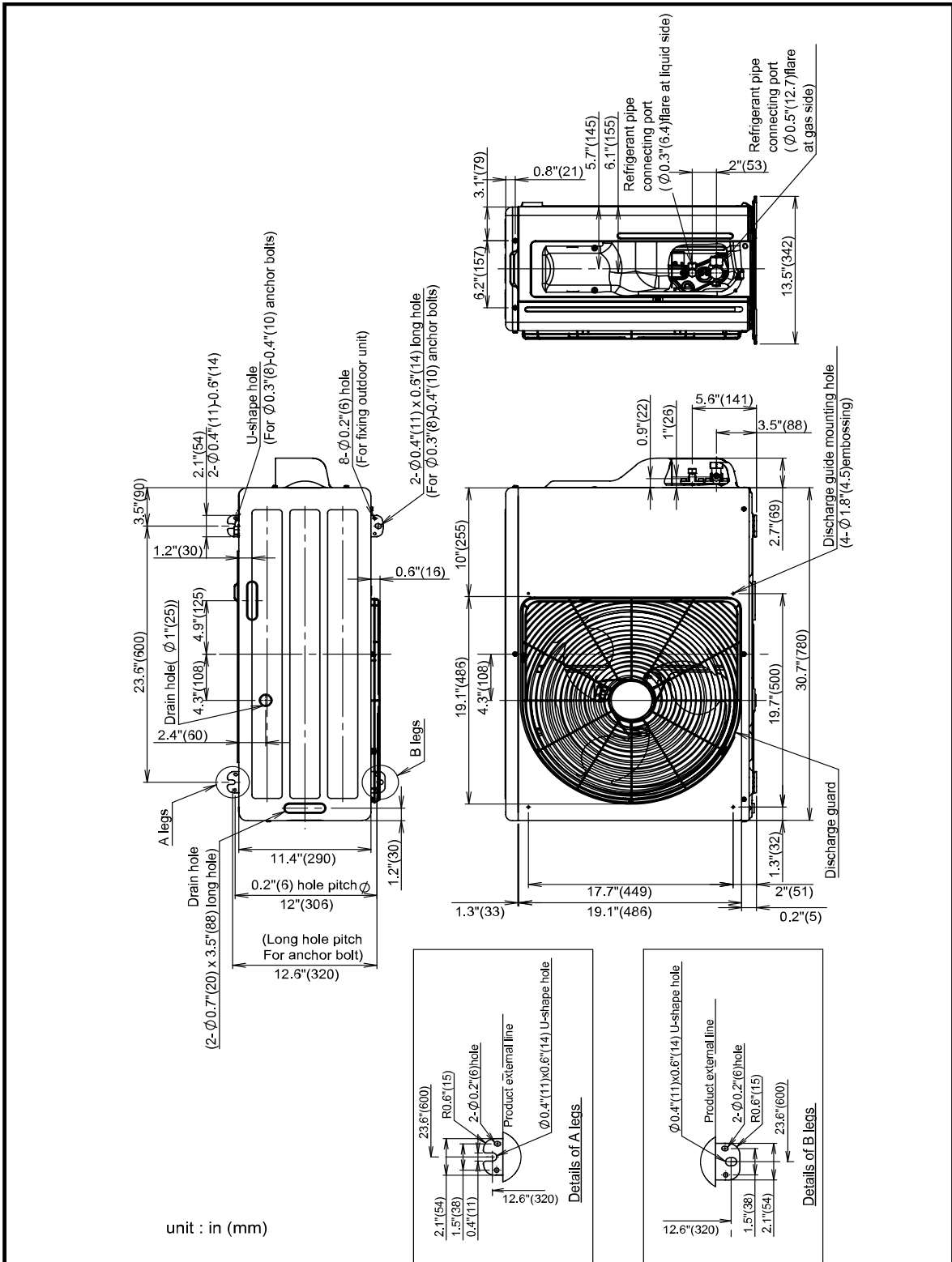
- R-410A refrigerant
- Six sizes from 18,000 to 48,000 Btu/h
- Outside Air Knockout
- Quiet operation (as low as 32 dBA)
- Vertical airflow can be set to swing or fixed position
- Auto or manually set three fan speeds
- Easy to remove cleanable filter

INDOOR UNIT MODEL		RAV-SM182CTP-UL
PERFORMANCE		
Cooling Rated Capacity	Btu/h	18,000
Heating Rated Capacity	Btu/h	20,000
Fan Type (Qty)		Centrifugal (2)
Airflow (H/M/L)	CFM	565/425/320
Sound Pressure (H/M/L)	dBA	37/35/32
ELECTRICAL		
Power Supply	V/Ph/Hz	From ODU
FILTER		
Type		Washable
Quantity		2
MERV Corresponding Value		5
Dimensions (H x W x D)	in.	9-3/4 x 16-5/8 x 1/2

PHYSICAL DATA		
Pipe Connection Size - Liquid (High Pressure)	in	1/4 (Flare)
Pipe Connection Size - Gas (Low Pressure)	in	1/2 (Flare)
Condensate Drain Connection	in	1
Refrigerant		R-410A
External Finish		Munsell N9.1
Unit Width	in	37-1/2
Unit Height	in	9-1/4
Unit Depth	in	27-1/4
Unit Net Weight	lb	53
MOTOR		
Motor Type		DC
Motor Watts	W	94

ACCESSORIES

- ☐ Wired Remote Controller (7-Day Programmable) RBC-AMS54E-UL
- ☐ Simple Wired Remote Controller RBC-AS41UL
- ☐ Stand-Alone Receiver with Wireless Remote Controller TCB-AX32UL
- ☐ Integral Receiver with Wireless Remote RBC-AX33C-UL
- ☐ Remote Sensor TCB-TC41LUL
- ☐ Wired Remote Controller RBC-AMT32UL
- ☐ Elbow Piping Kit TCB-KP14CPE
- ☐ Condensate Drain Pump Kit TCB-DP31CE
- ☐ Auxiliary Outside Air Flange TCB-FF101URUL

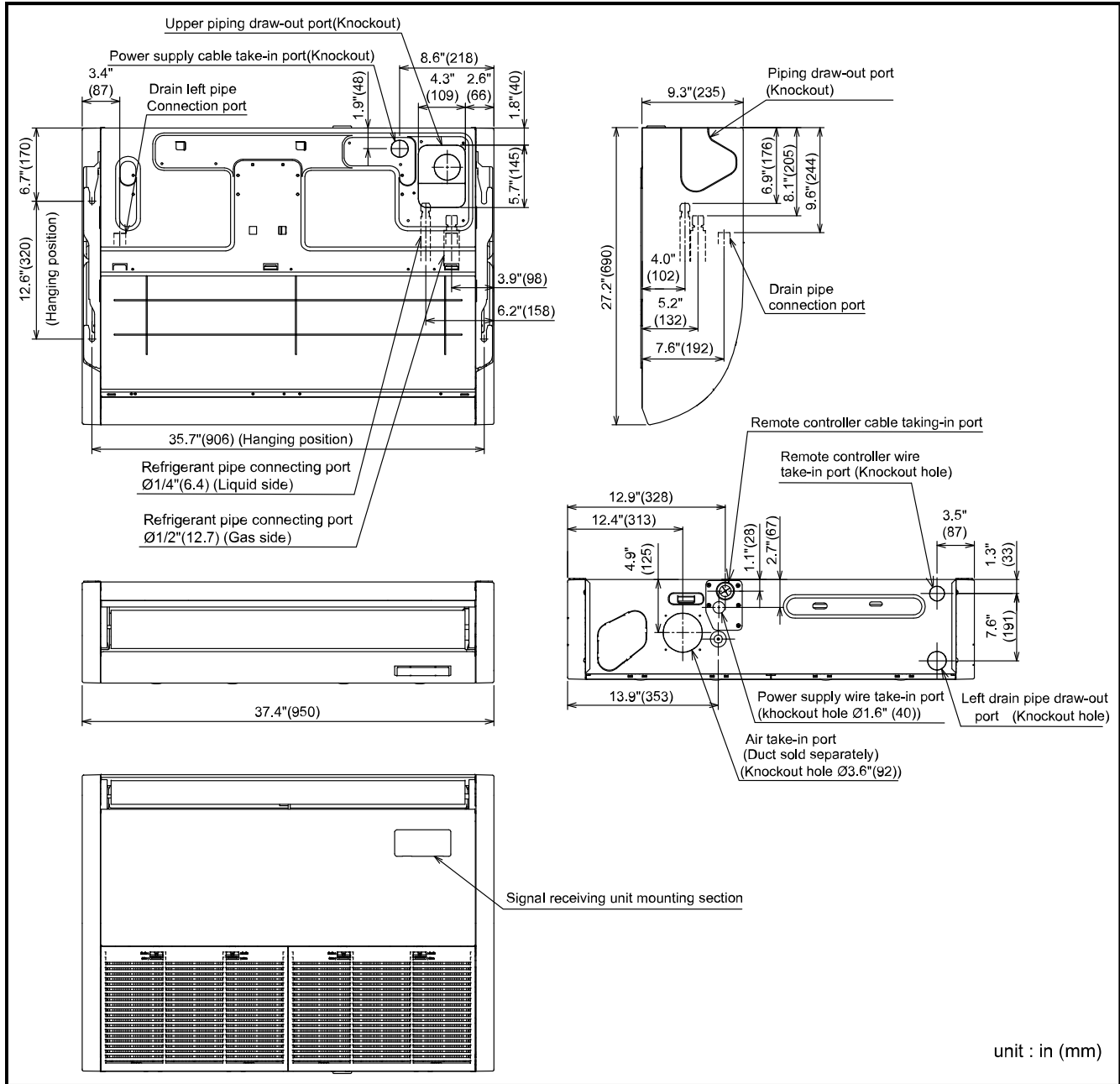


A220924



DIMENSIONAL DRAWING

INDOOR UNIT UNDER CEILING RAV-SP182CTP-UL



A221018

