

SHRMe VRF Outdoor Unit MMY-AP3606FT6P-UL - Heat Recovery

TOSHIBA
Carrier

Submittal Data

Job Name _____ Location _____

Tag _____



SHRMe VRF Heat Recovery Features

- 10-ton modules are combined to form a 30-ton system
- Capable of simultaneous cooling and heating (flow selector boxes required)
- Modules have 2 inverter-driven twin rotary compressors
- Backup capability due to multiple compressors
- Compressor speed varied in 0.1 Hz increments for comfort and efficiency
- Direct drive, inverter-driven 64-step outdoor motor
- Up to 3281 ft (1000 m) actual total system piping (liquid line)

- Up to 591 ft (180 m) actual piping length from outdoor unit to furthest fan coil
- Up to 330 ft (100 m) outdoor control wiring
- Up to 6560 ft (2000 m) control wiring between outdoor and indoor units
- Operating temperature range
Cooling (db): 14 to 122 F (–10 to 50 C)
Heating (wb): –13 to 60 F (–25 to 15.6 C)
- Protection: high pressure switch, low pressure sensor and switch, PC board fuse, inverter overload protection
- 7-year compressor limited warranty, 5-year parts limited warranty

Header Unit Model	MMY-MAP1206FT6P-UL	
Follower Unit Model	MMY-MAP1206FT6P-UL MMY-MAP1206FT6P-UL	
PERFORMANCE		
Rated Cooling Capacity	Btu/h	342,000
Rated Heating Capacity	Btu/h	386,000
Maximum Total Connected Indoor Unit Capacity		Up to 150%
SIMULTANEOUS COOLING AND HEATING EFFICIENCY*		
SCHE, Ducted FCUs		22.20
SCHE, Ductless FCUs		25.10
COOLING EFFICIENCY*		
EER/IEER, Ducted FCUs		9.50/20.20
EER/IEER, Ductless FCUs		9.70/23.30
HEATING EFFICIENCY*		
COP at 47 F, Ducted FCUs		3.37
COP at 47 F, Ductless FCUs		3.30
Fan Type (Qty)		Propeller (3)
Airflow, Standard Range	CFM	7700 + 7700 + 7700
Combined System Sound Pressure, Cooling/Heating	dBA	67.8/68.8
External Static Pressure†	in. wg	0.16
ELECTRICAL		
Power Supply	V/Ph/Hz	460/3/60
Minimum Circuit Amps (MCA)**	A	22 + 22 + 22
Recommended Fuse Size**	A	25 + 25 + 25

LEGEND

db	—	Dry Bulb
COP	—	Coefficient of Performance
EER	—	Energy Efficiency Ratio
FCU	—	Fan Coil Unit
IEER	—	Integrated Energy Efficiency Ratio
SCHE	—	Simultaneous Cooling and Heating Efficiency
wb	—	Wet Bulb

COMPRESSORS		
Type (Number)		Inverter Twin Rotary (6)
Motor Output	kW	2 x 4.0 + 2 x 4.0 + 2 x 4.0
FAN MOTOR		
Motor Type (Steps)		Inverter Direct Driven (64)
Motor Output	kW	1.0 + 1.0 + 1.0
PHYSICAL DATA		
Main Pipe Connection Size - Liquid (High Pressure)††	in.	7/8 (Flare)
Main Pipe Connection Size - Gas (Low Pressure)††	in.	1-5/8 (Brazed)
Main Discharge (High Pressure)††	in.	1-3/8 (Flare)
Balance	in.	3/8 (Flare)
Refrigerant		R-410A
Factory Charge***	lb	3 x 24.3
External Finish		Munsell 1Y8.5/0.5
Header Unit/Follower Unit Width	in.	47.6 / 47.6 / 47.6
Header Unit/Follower Unit Height	in.	72.9 / 72.9 / 72.9
Header Unit/Follower Unit Depth	in.	30.7 / 30.7 / 30.7
Header Unit/Follower Unit Net Weight	lb	684 + 684 + 684
REQUIRED ACCESSORY		
Connection Kit		RBM-BT14FUL RBM-BT24FUL

*Rated per AHRI (Air-Conditioning, Heating and Refrigeration Institute) 1230 Standard.

Cooling: Indoor 80 F (35 C) db/67 F (27 C) wb; Outdoor 95 F (35 C) db

Heating: Indoor 70 F (21 C) db; Outdoor 47 F (8 C) db/43 F (6 C) wb

†Requires setting by DIP switches.

**Separate power supply is required. MCA and fuse size for both units are given.

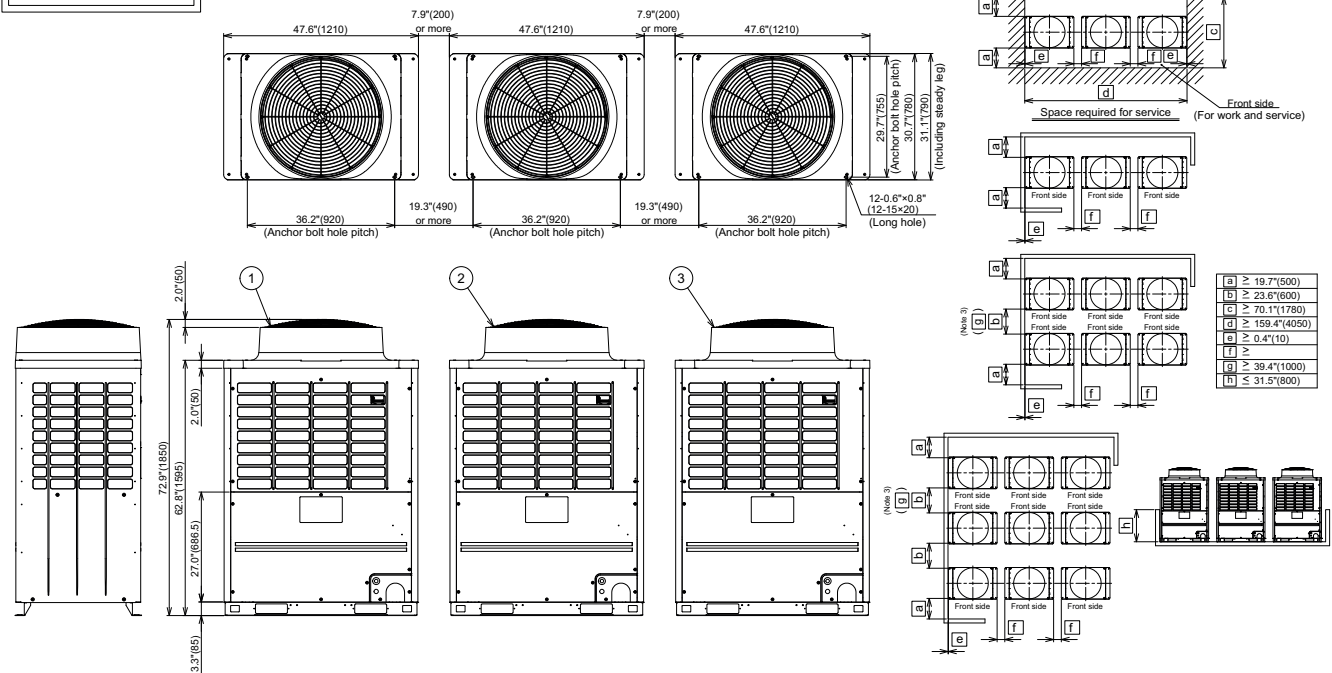
††Main pipe size leaving connection kit.

***Additional charges required.

NOTE: Unit cabinet and coil slab shall be capable of withstanding 500-hour salt spray test in accordance with the ASTM (American Society for Testing and Materials, U.S.A.) B-117 Standard.

DIMENSIONAL DRAWING
OUTDOOR UNIT COMBINATION HEAT RECOVERY MMY-AP3606FT6P-UL

Three units connected



- (Note)
1. If there is an obstacle at the upper side of the outdoor unit, set the top end of the outdoor unit 78.7\"/>
 2. Limit the height of the obstacle surrounding the outdoor unit to 31.5\"/>
 3. The main pipe in front of the outdoor unit must extend at least a minimum of 19.7\"/>
 4. Arrange each outdoor unit in order of its capacity.
(Header unit① ≥ Follower unit② ≥ Follower unit③)

All dimensions are shown in inches.

MODEL	OUTDOOR UNIT		
	HEADER UNIT ①	FOLLOWER UNIT ②	FOLLOWER UNIT ③
MMY-AP3606FT6P-UL	MMY-MAP1206FT6P-UL	MMY-MAP1206FT6P-UL	MMY-MAP1206FT6P-UL

