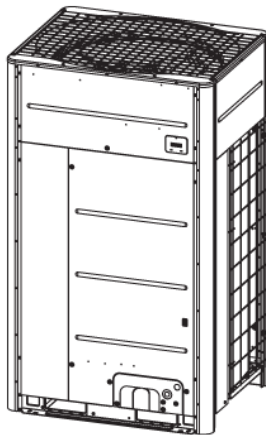


VRF Outdoor Unit MMY-MUP1201FT6P-UL - Heat Recovery

TOSHIBA
Carrier

Submittal Data

Job Name _____ Location _____
Tag _____



A210612

Heat Recovery Features

- Modules and pairings available from 6 to 30 tons
- Modules have inverter-driven scroll compressors
- Direct-drive, inverter-driven outdoor motor
- Up to 3937 ft actual total system piping (liquid line)
- 656 ft (200 m) actual piping length from outdoor unit to furthest fan coil

- Operating temperature range
Cooling (db): -10° to 125°F (-15° to 52°C)
Heating (wb): -22° to 60°F (-25° to 18°C)
- Protection: high pressure sensor and switch, low pressure sensor and switch, process controller board fuse, inverter overload protection
- 7-year compressor limited warranty
- 5-year parts limited warranty

| | | |
|---|--------|--------------------|
| Header Unit Model | | MMY-MUP1201FT6P-UL |
| PERFORMANCE | | |
| Nominal Cooling Capacity | Btu/h | 120,000 |
| Nominal Heating Capacity | Btu/h | 135,000 |
| Maximum Number of Indoor Units | | 21 |
| SIMULTANEOUS COOLING AND HEATING EFFICIENCY† | | |
| SCHE, Ducted FCUs | | 31.0 |
| SCHE, Ductless FCUs | | 35.0 |
| COOLING EFFICIENCY† | | |
| EER/IEER, Ducted FCUs | Btu/Wh | 11.6/22.0 |
| Power Consumption, Ducted FCUs | kW | 8.60 |
| EER/IEER, Ductless FCUs | Btu/Wh | 12.1/24.6 |
| Power Consumption, Ductless FCUs | kW | 9.26 |
| HEATING EFFICIENCY† | | |
| COP at 47°F, Ducted FCUs | | 3.84 |
| Power Consumption, Ducted FCUs | kW | 8.53 |
| COP at 47°F, Ductless FCUs | | 4.20 |
| Power Consumption, Ductless FCUs | kW | 8.76 |
| Fan Type (Qty) | | Propeller (1) |
| Airflow, Standard Range | CFM | 7416 |
| Sound Pressure | dBA | 60.0 |
| External Static Pressure* | in. wg | 0.321 |

LEGEND

| | |
|------|---|
| db | — Dry Bulb |
| COP | — Coefficient of Performance |
| EER | — Energy Efficiency Ratio |
| FCU | — Fan Coil Unit |
| IEER | — Integrated Energy Efficiency Ratio |
| wb | — Wet Bulb |
| SCHE | — Simultaneous Cooling and Heating Efficiency |

| | | |
|---|---------|--------------------------|
| ELECTRICAL | | |
| Power Supply | V/Ph/Hz | 460/3/60 |
| Minimum Circuit Amps (MCA) | A | 21.3 |
| Maximum Overcurrent Protection (MOCP) | A | 25 |
| COMPRESSORS | | |
| Type (Number) | | Hermetic Twin Rotary (1) |
| FAN MOTOR | | |
| Motor Output | kW | 0.33 x 2 |
| PHYSICAL DATA | | |
| Pipe Connection Size - Liquid (High Pressure) | in. | 1/2 (Brazed) |
| Pipe Connection Size - Gas (Low Pressure) | in. | 1-1/8 (Brazed) |
| Discharge - Gas (High/Low Pressure) | | 3/4 (Brazed) |
| Refrigerant | | R-410A |
| Factory Charge†† | lb | 19.8 |
| Unit Width | in. | 51-1/2 |
| Unit Height | in. | 66-1/2 |
| Unit Depth | in. | 31-1/4 |
| Net Weight | lb | 686 |

†Rated per AHRI (Air-Conditioning, Heating and Refrigeration Institute) 1230 Standard.

Cooling: Indoor 80°F (27°C) db/67°F (20°C) wb; Outdoor 95°F (35°C) db

Heating: Indoor 70°F (21°C) db; Outdoor 47°F (8°C) db/43°F (6°C) wb

*Requires setting by menu functions.

††Additional charge required.

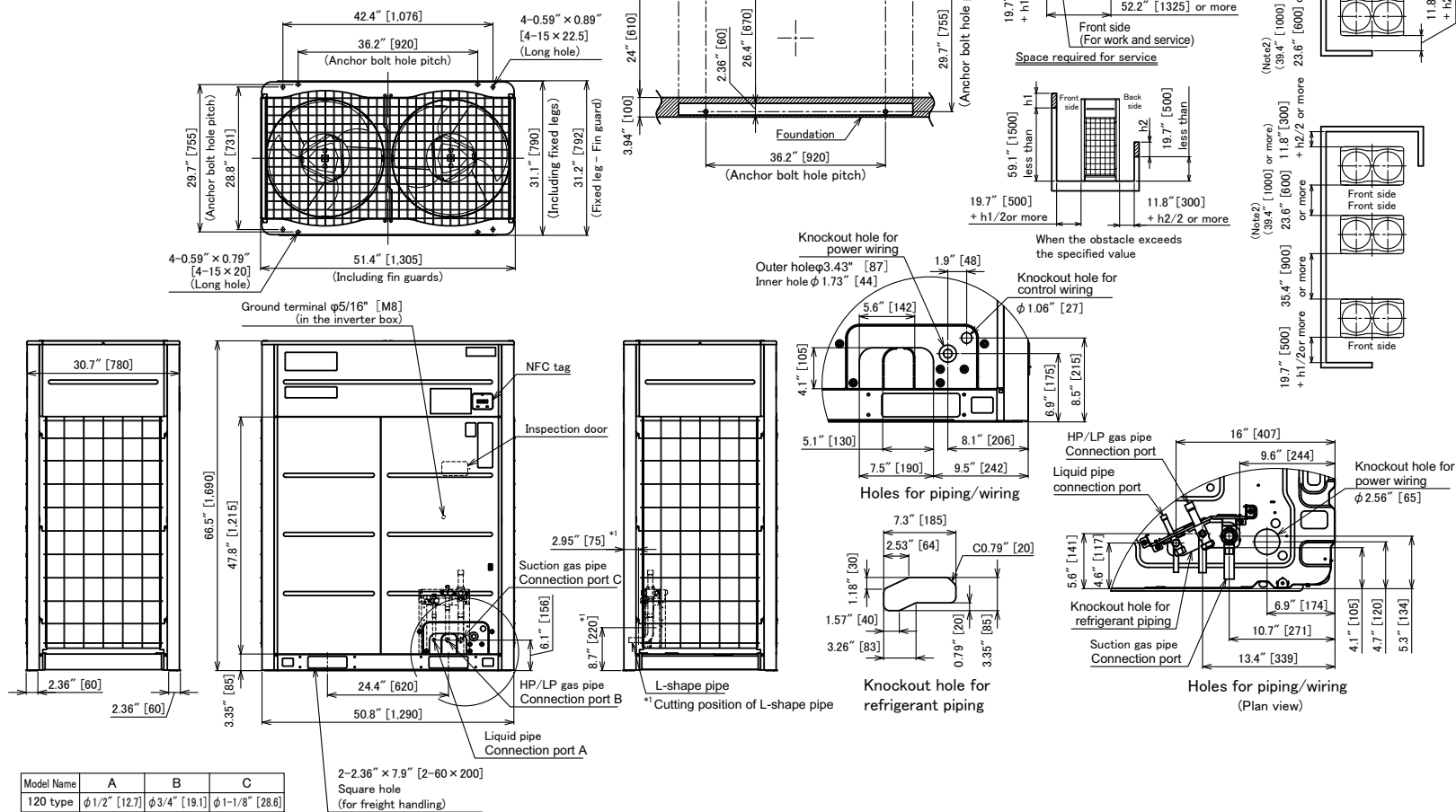
NOTE: Unit cabinet and coil slab shall be capable of withstanding 500-hour salt spray test.

DIMENSIONAL DRAWING

OUTDOOR UNIT MMY-MUP1201FT6P-UL

Note)

1. If there is an obstacle at the upper side of the outdoor unit, set the top end of the outdoor unit 78.7in [2000mm] apart from the obstacle.
2. Draw out the pipe procured locally to the front of the outdoor unit horizontally, and keep 19.7in [500mm] or more between the outdoor unit and traversing pipe if placing pipe transversely.



(Unit : in [mm])

