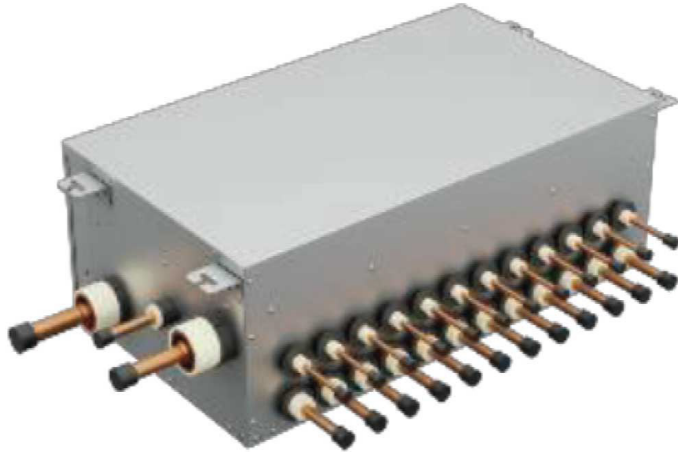


SHRMe RBM-Y0611FU12PUL–Multiport Flow

TOSHIBA
Carrier

Submittal Data

Job Name _____ Location _____
Tag _____



Multiport Flow Selector Features

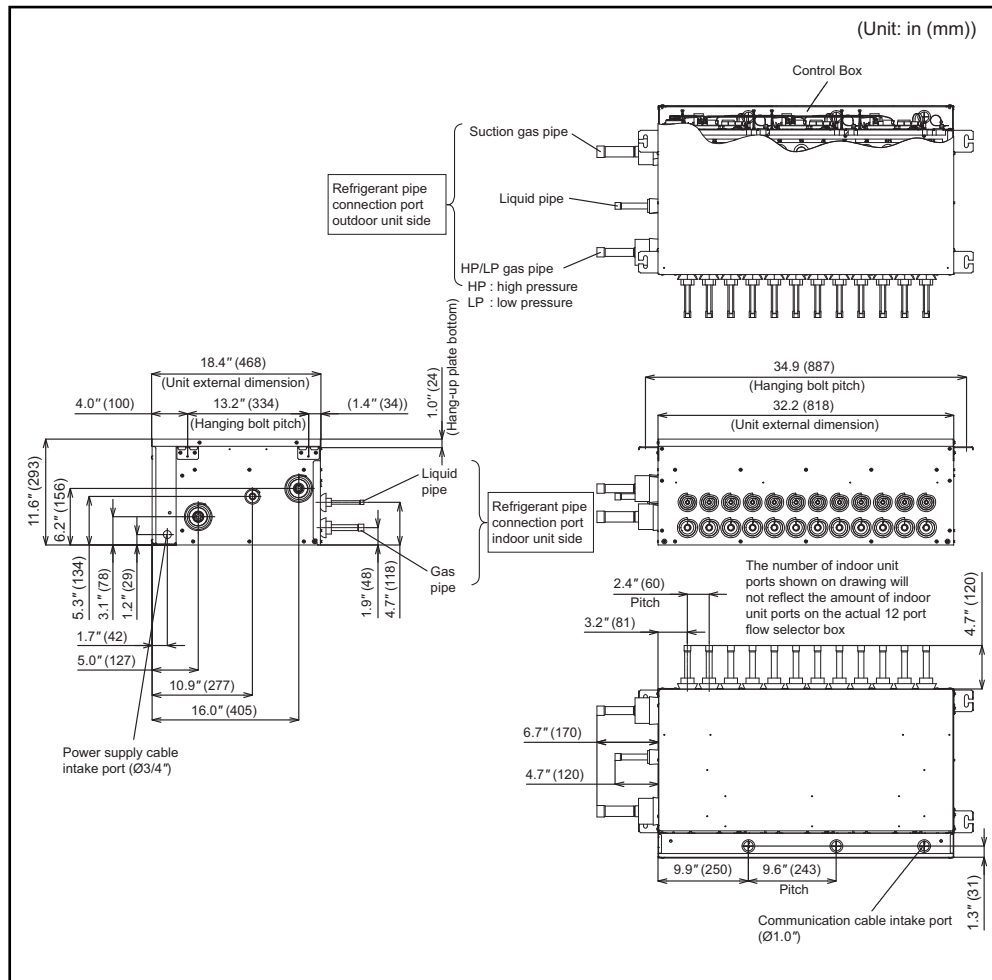
- Maximum piping length between the indoor unit and the FS box is 115 ft.
- Multiple indoor units can be connected to one box

MODEL NAME	RBM-Y0611FU12PUL	
POWER SUPPLY	208-230/1/60	
MCA	A	0.75
MOCP	A	15
Connectible indoor unit capacity/port	kBtu/h	1 branch: below 61
DIMENSIONS	Height (in)	11.5
	Width (in)	32.2
	Depth (in)	18.4
TOTAL WEIGHT	lbs	106
Connecting Port Diameter (Indoor Unit Side)	Liquid Side (in)	3/8
	Gas Side (in)	5/8
Connecting Port Diameter (Outdoor Unit Side)	Liquid Side (in)	5/8
	Discharge Gas Side (in)	7/8
	Suction Gas Side (in)	1-1/8
Connection	Braze	

LEGEND

MCA — Minimum Circuit Amps
MOCP — Maximum Over Current Protection

MULTIPOINT FLOW SELECTOR (RBM-Y0611FU12PUL) DIMENSIONS



MULTIPOINT FLOW SELECTOR (RBM-Y0611FU12PUL) CLEARANCES

