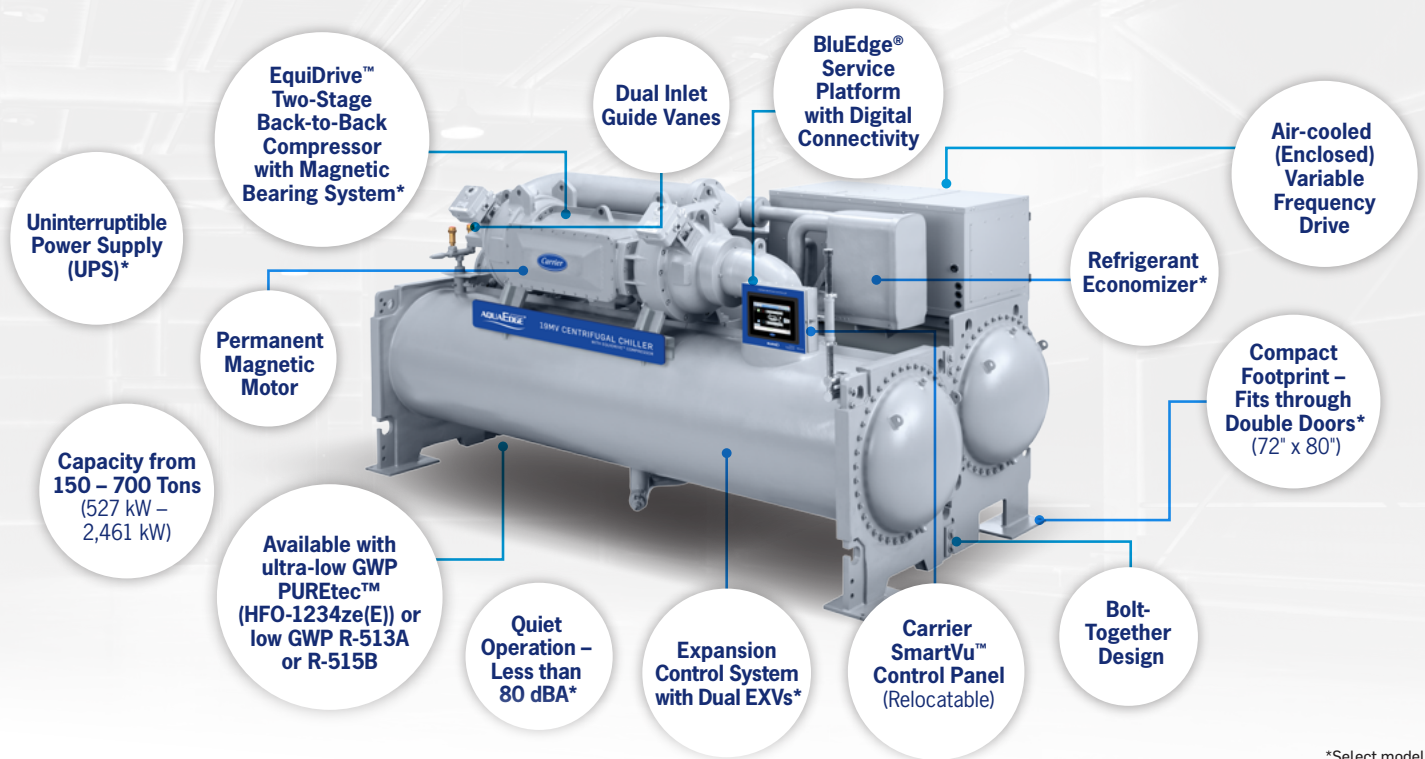




AQUAEDGE® 19MV CENTRIFUGAL CHILLER

Experience Unconditional Performance



*Select models

Introducing the all-new AquaEdge 19MV Centrifugal Chiller.

Designed to deliver high performance and reliability across a wide operating range.

It's time to rethink what you know about chillers. In the past, more operating range often meant less efficiency at design conditions. Now Carrier has created a chiller that delivers both, unconditionally. The all-new AquaEdge 19MV chiller combines best-in-segment efficiency at design and off-design conditions with the ability to operate reliably, even at severe conditions and heavy cooling loads. In other words, Carrier has created a chiller with performance you can count on – no matter what.

- Reliable performance
- Incredible efficiency
- Flexible options
- Easy installation and control

With the AquaEdge 19MV, you can have it all – unconditionally.

Features, options and footprint – all for unconditional flexibility and efficiency.

• UNCONDITIONAL SUPPORT AND PEACE OF MIND

Carrier's BluEdge® service platform is a best-in-class lifecycle solution including customizable plans to ensure your equipment's peak performance and longevity. Our latest digital technology, powered by Abound® HVAC Performance, analyzes data to deliver proactive visibility on the state of the equipment. Maximize your uptime, reduce operating costs and improve chiller health.

• COMPACT FOOTPRINT FOR EASY INSTALLATION

Select models fit through double doors (72" x 80") with no disassembly required. (Bolt-together construction allows for easy disassembly and reassembly if required.)

• ECONOMIZER*

Compact brazed plate economizer leverages the two-stage compressor design to increase refrigerant liquid subcooling and evaporator capacity, ensuring more performance per square foot.

• QUIET OPERATION

Operates at less than 80 dBA.*

• REFRIGERANT OPTIONS

Available with ultra-low GWP PUREtec™ (HFO-1234ze(E)) or low GWP R-513A or R-515B.

• GREENSPEED® INTELLIGENCE VARIABLE FREQUENCY DRIVE

An air-cooled Variable Frequency Drive (VFD) enables starting and operating with cold condenser water while variable speed operation provides enhanced performance at off-design conditions. The VFD enclosure protects power electronics from airborne contaminants.

• EXPANSION CONTROL SYSTEM

Expansion control system (metering device) includes dual Electronic Expansion Valves (EXVs)* ensuring full capacity at virtually no lift* for excellent cold weather performance and providing redundancy at typical operating conditions.

• CONDENSER AND EVAPORATOR

High-performance tubing, low waterside pressure drop and integral subcooling provide high efficiency.

• UNCONDITIONAL CONTROL

Carrier SmartVu control panel for intelligent control of critical aspects of your cooling system, along with easier tracking and analysis of operational data.



Unconditional performance starts with an unbeatable compressor.

The AquaEdge 19MV leverages proven EquiDrive two-stage back-to-back compressor technology – now with a magnetic bearing system option – to provide More Operating Range while maintaining best-in-segment efficiency at design conditions (MORe) – all while staying cool and quiet under pressure.

WIDER OPERATING RANGE

Due to a wider operating range, including the ability to operate at virtually no lift,* the AquaEdge 19MV can take full advantage of cold condenser water, chilled water reset and other energy-saving practices

ENERGY REDUCTION

Energy is reduced due to better efficiency at common metrics such as full load, 75% load (the “lifecycle point”) and Integrated Part Load Value (IPLV)

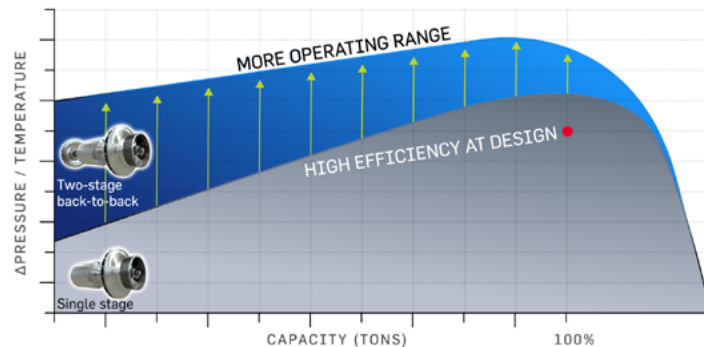
BUILDING RESILIENCY

Building resiliency is significantly improved with its ability to operate with elevated condenser water temperatures at low and full load

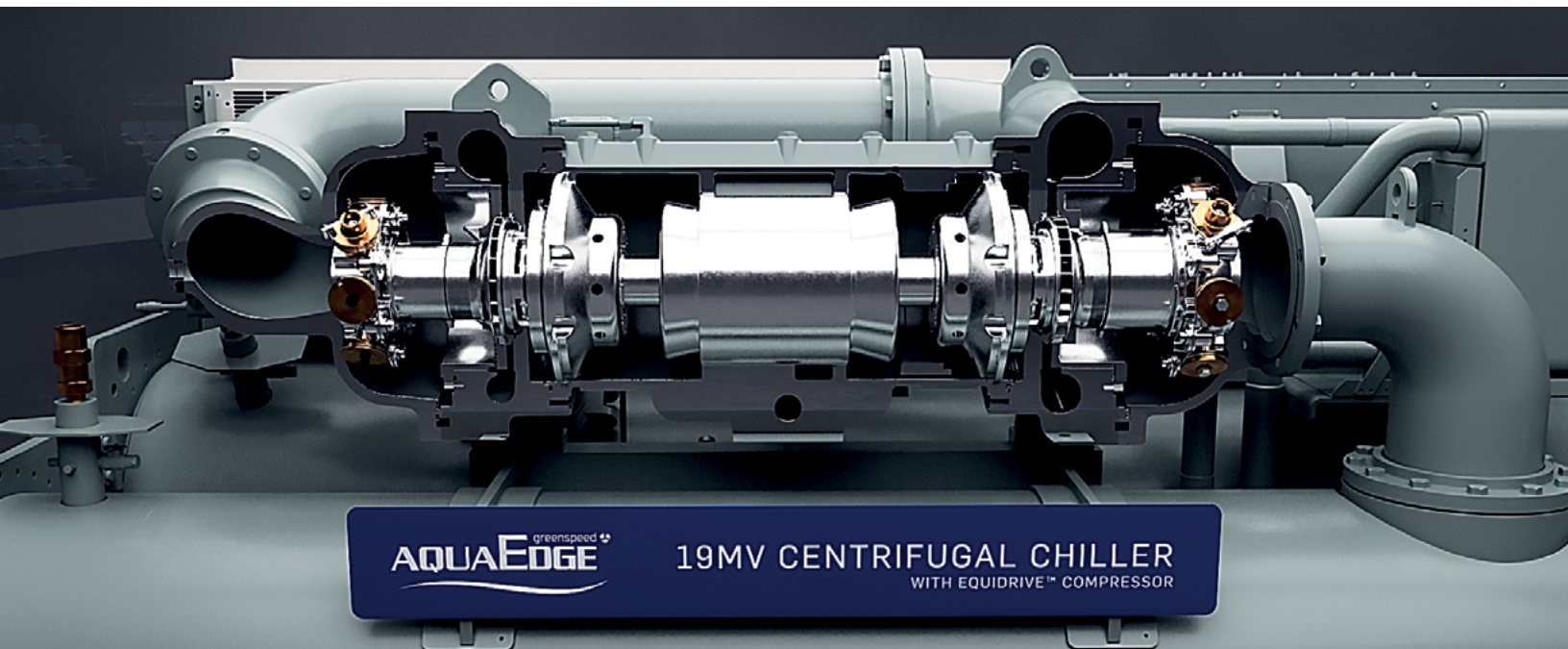
PROVIDING CONFIDENCE

The ability to go beyond the typical operating range is a game-changing capability that provides building owners and facility managers confidence in reliable, efficient operation beyond specifications

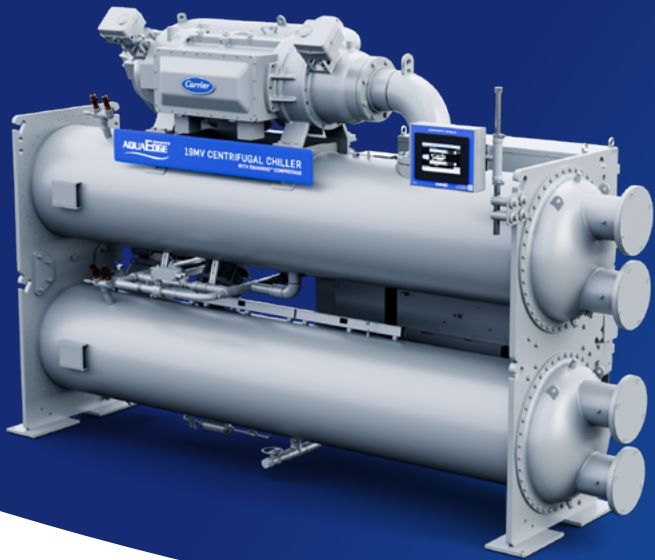
Experience MORe with AquaEdge® 19MV



*Select models



The EquiDrive two-stage back-to-back compressor – now with a magnetic bearing system option – provides an improvement in both chiller energy efficiency and building resiliency.



Benefits at a glance:

- EquiDrive two-stage back-to-back compressor – now with a magnetic bearing system option – achieves best-in-segment performance
- Compact footprint – select models fit through double doors (72" x 80") without disassembly
- Achieves <0.52 kW/Ton (6.8 COP) and <0.31 kW/Ton (11.3 COP) (IPLV) at AHRI conditions
- Operating range of 40°F to 95°F (4.4°C to 35°C) entering condenser water down to 10% load
- Quiet – the unit operates at less than 80 dBA*
- Carrier SmartVu control panel allows intelligent control of all aspects of the cooling system
- Digital connectivity provides continuous monitoring and proactive chiller insights through a BluEdge service agreement

PLV Pro™: From the creators of HAP.

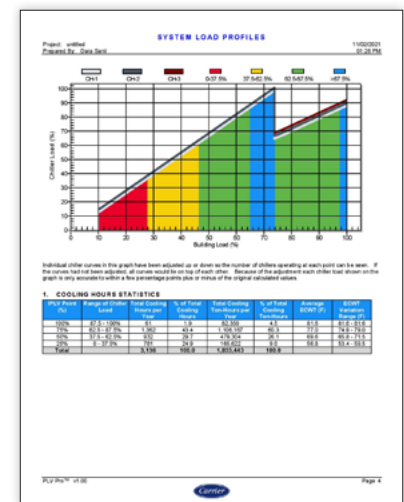
*Select models

Carrier's PLV Pro software provides a time-saving method to evaluate overall chiller performance based on site-specific weather data, Department of Energy (DOE) building load profiles, multi-chiller staging and economizer operation for professionals who need a quick and free-of-charge alternative to generic IPLV-based lifecycle analyses.

PLV Pro consists of an intuitive and simple user interface that evaluates chiller system performance based on the following criteria:

- Geographical location
- Building type
- Chiller plant capacity
- Quantity of chillers
- Chiller staging method
- Design temperatures
- Chiller plant design
- Economizer operation

PLV Pro utilizes precalculated load profiles generated with Carrier's Hourly Analysis Program (HAP) energy modeling software for accuracy and speed.



Ask your local Carrier expert about the AquaEdge 19MV and a full range of Carrier commercial HVAC system solutions:



SERVICE & RENTALS

EQUIPMENT

CONTROLS



R-515B



carrier.com/19MV

©2024 Carrier. All Rights Reserved.

Manufacturer reserves the right to discontinue, or change at any time, specifications or designs without notice or without incurring obligations. Claims noted may not be available on every model. A Carrier expert can provide guidance regarding your specific application needs. Water-cooled chillers within the scope of the AHRI WCCCL certification program are certified in accordance with the AHRI Water-Cooled Water-Chilling and Heat Pump Water-Heating Packages Certification Program, which is based on AHRI Standard 550/590 (I-P) and AHRI Standard 551/591 (SI). Certified units may be found in the AHRI Directory at <http://www.ahridirectory.org>. All trademarks and service marks referred herein are property of their respective owners. Cat. No. 04-811-50070