

# SMMSu / SHRMu VRF Indoor Unit MMC-UP0481HP-UL—Underceiling

**TOSHIBA**  
*Carrier*

## Submittal Data

Job Name \_\_\_\_\_ Location \_\_\_\_\_  
Tag \_\_\_\_\_



### SMMSu / SHRMu VRF Underceiling Features

- R-410A refrigerant
- Five sizes from 18,000 to 48,000 Btu/h
- Quiet operation, as low as 32 dBA
- Vertical airflow can be set to swing or fixed position
- Auto or manually set three fan speeds
- Easy to remove cleanable filter
- Five-year parts limited warranty

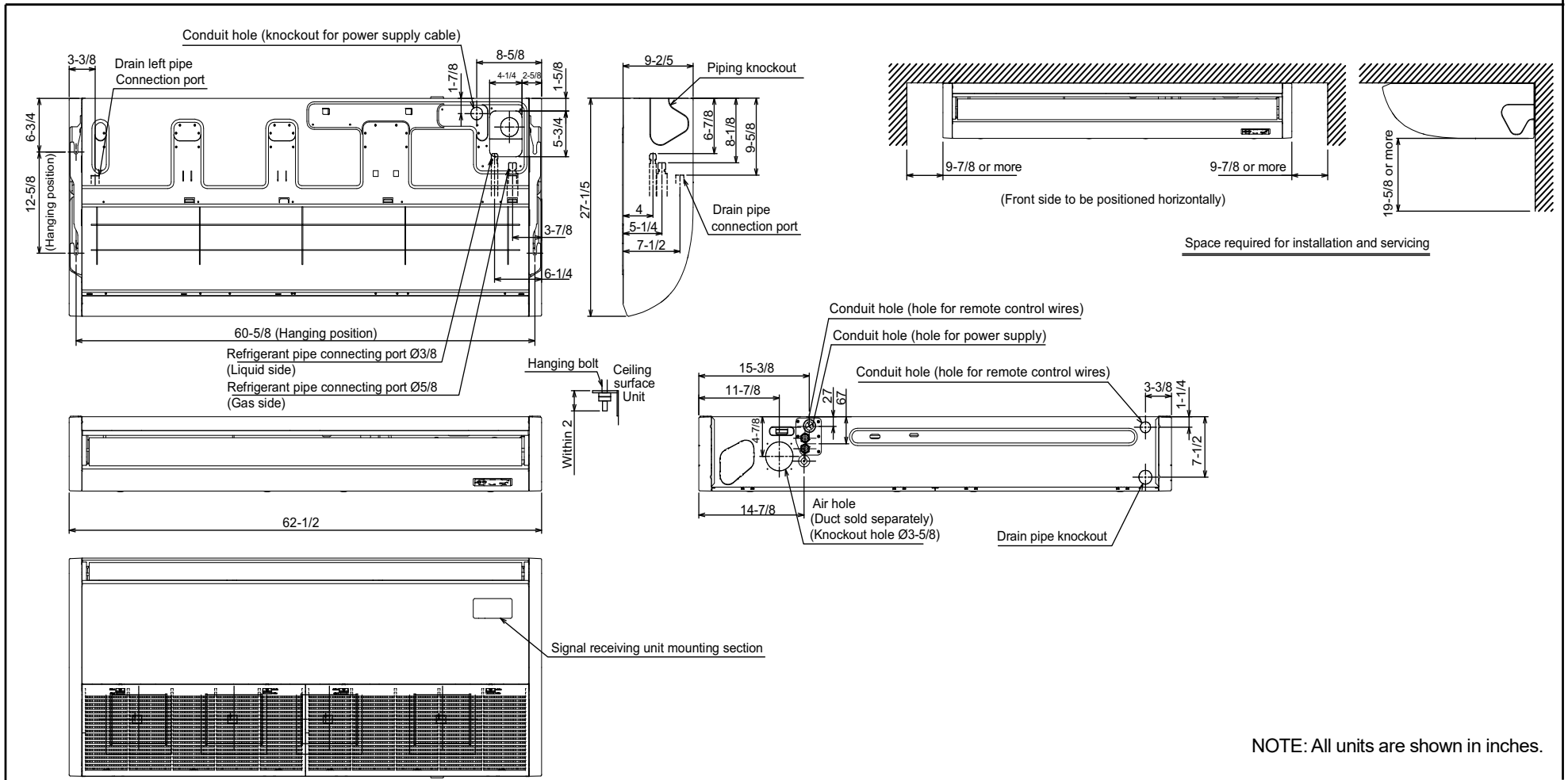
INDOOR UNIT MODEL		MMC-UP0481HP-UL
PERFORMANCE		
Cooling Rated Capacity	Btu/h	48,000
Heating Rated Capacity	Btu/h	54,000
Fan Type (Qty)	Centrifugal (3)	
Air Flow (H / M / L)	CFM	1095 / 900 / 706
Sound Pressure (H / M / L)	dBA	44 / 41 / 35
FILTER (Included)		
Type	Washable	
Quantity	2	
MERV rating	5	
Dimensions (W x L x D)	in.	9-3/4 x 29-1/8 x 1/2
ELECTRICAL		
Power Supply	V/Ph/Hz	208-230/1/60
Power Consumption (Input)	kW	0.083
Full Load Amps (FLA)	A	0.89
Minimum Circuit Amps (MCA)	A	1.11
Maximum Overcurrent Protection (MOCP)	A	15.0

MOTOR		
Motor Type	DC	
Motor Watts	W	139
PHYSICAL DATA		
Pipe Connection Size - Liquid (High Pressure)	in.	3/8 (Flare)
Pipe Connection Size - Gas (Low Pressure)	in.	5/8 (Flare)
Pipe Connection Size - Drain (OD)	in.	1
Pipe Connection Size - Drain (ID)	in.	13/16
Refrigerant	R-410A	
External Finish	Munsell N9.1	
Unit Width	in.	62-1/2
Unit Height	in.	9-2/5
Unit Depth	in.	27-1/5
Net Weight	lb	89

### ACCESSORIES

- ☐ Wired Remote Controller (7-Day Programmable) - RBC-AMS54E-UL / RBC-AWSU52-UL
- ☐ Simple Wired Remote Control - RBC-AS41UL
- ☐ Integral Receiver with Wireless Remote RBC-AXU33CP-UL
- ☐ Remote Sensor TCB-TC41U-UL
- ☐ Elbow Piping Kit TCB-KP14CP-UL
- ☐ Condensate Drain Pump Kit TCB-DP31CE
- ☐ Auxiliary Outside Air Flange TCB-FF101URUL

# DIMENSIONAL DRAWING INDOOR UNIT UNDERCEILING MMC-UP0481HP-UL



NOTE: All units are shown in inches.

