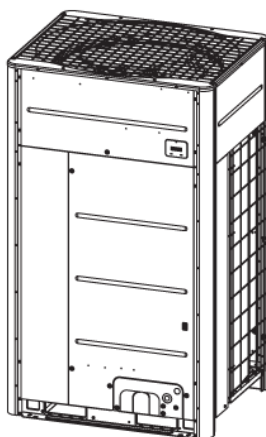


# VRF Outdoor Unit MMY-MUP0961FT9P-UL - Heat Recovery

**TOSHIBA**  
*Carrier*

## Submittal Data

Job Name \_\_\_\_\_ Location \_\_\_\_\_  
Tag \_\_\_\_\_



A210612

### Heat Recovery Features

- Modules and pairings available from 6 to 30 tons
- Modules have inverter-driven scroll compressors
- Direct-drive, inverter-driven outdoor motor
- Up to 3937 ft actual total system piping (liquid line)
- 656 ft (200 m) actual piping length from outdoor unit to furthest fan coil

- Operating temperature range  
Cooling (db): -10° to 125°F (-15° to 52°C)  
Heating (wb): -22° to 60°F (-25° to 18°C)
- Protection: high pressure sensor and switch, low pressure sensor and switch, process controller board fuse, inverter overload protection
- 7-year compressor limited warranty
- 5-year parts limited warranty

Header Unit Model		MMY-MUP0961FT9P-UL
<b>PERFORMANCE</b>		
Nominal Cooling Capacity	Btu/h	96,000
Nominal Heating Capacity	Btu/h	108,000
Maximum Number of Indoor Units		17
<b>SIMULTANEOUS COOLING AND HEATING EFFICIENCY†</b>		
SCHE, Ducted FCUs		33.0
SCHE, Ductless FCUs		35.0
<b>COOLING EFFICIENCY†</b>		
EER/IEER, Ducted FCUs	Btu/Wh	10.9/21.2
Power Consumption, Ducted FCUs	kW	7.39
EER/IEER, Ductless FCUs	Btu/Wh	12.1/26.0
Power Consumption, Ductless FCUs	kW	7.41
<b>HEATING EFFICIENCY†</b>		
COP at 47°F, Ducted FCUs		3.88
Power Consumption, Ducted FCUs	kW	6.73
COP at 47°F, Ductless FCUs		4.45
Power Consumption, Ductless FCUs	kW	6.59
Fan Type (Qty)		Propeller (1)
Airflow, Standard Range	CFM	6357
Sound Pressure	dBA	61.0
External Static Pressure*	in. wg	0.321

### LEGEND

db	— Dry Bulb
COP	— Coefficient of Performance
EER	— Energy Efficiency Ratio
FCU	— Fan Coil Unit
IEER	— Integrated Energy Efficiency Ratio
wb	— Wet Bulb
SCHE	— Simultaneous Cooling and Heating Efficiency

<b>ELECTRICAL</b>		
Power Supply	V/Ph/Hz	208-230/3/60
Minimum Circuit Amps (MCA)	A	36.6
Maximum Overcurrent Protection (MOCP)	A	45
<b>COMPRESSORS</b>		
Type (Number)		Hermetic Twin Rotary (1)
<b>FAN MOTOR</b>		
Motor Output	kW	0.66 x 1
<b>PHYSICAL DATA</b>		
Pipe Connection Size - Liquid (High Pressure)	in.	1/2 (Brazed)
Pipe Connection Size - Gas (Low Pressure)	in.	7/8 (Brazed)
Discharge - Gas (High/Low Pressure)		3/4 (Brazed)
Refrigerant		R-410A
Factory Charge††	lb	13.2
Unit Width	in.	39-1/2
Unit Height	in.	66-1/2
Unit Depth	in.	31-1/4
Net Weight	lb	532

†Rated per AHRI (Air-Conditioning, Heating and Refrigeration Institute) 1230 Standard.

Cooling: Indoor 80°F (27°C) db/67°F (20°C) wb; Outdoor 95°F (35°C) db

Heating: Indoor 70°F (21°C) db; Outdoor 47°F (8°C) db/43°F (6°C) wb

\*Requires setting by menu functions.

††Additional charge required.

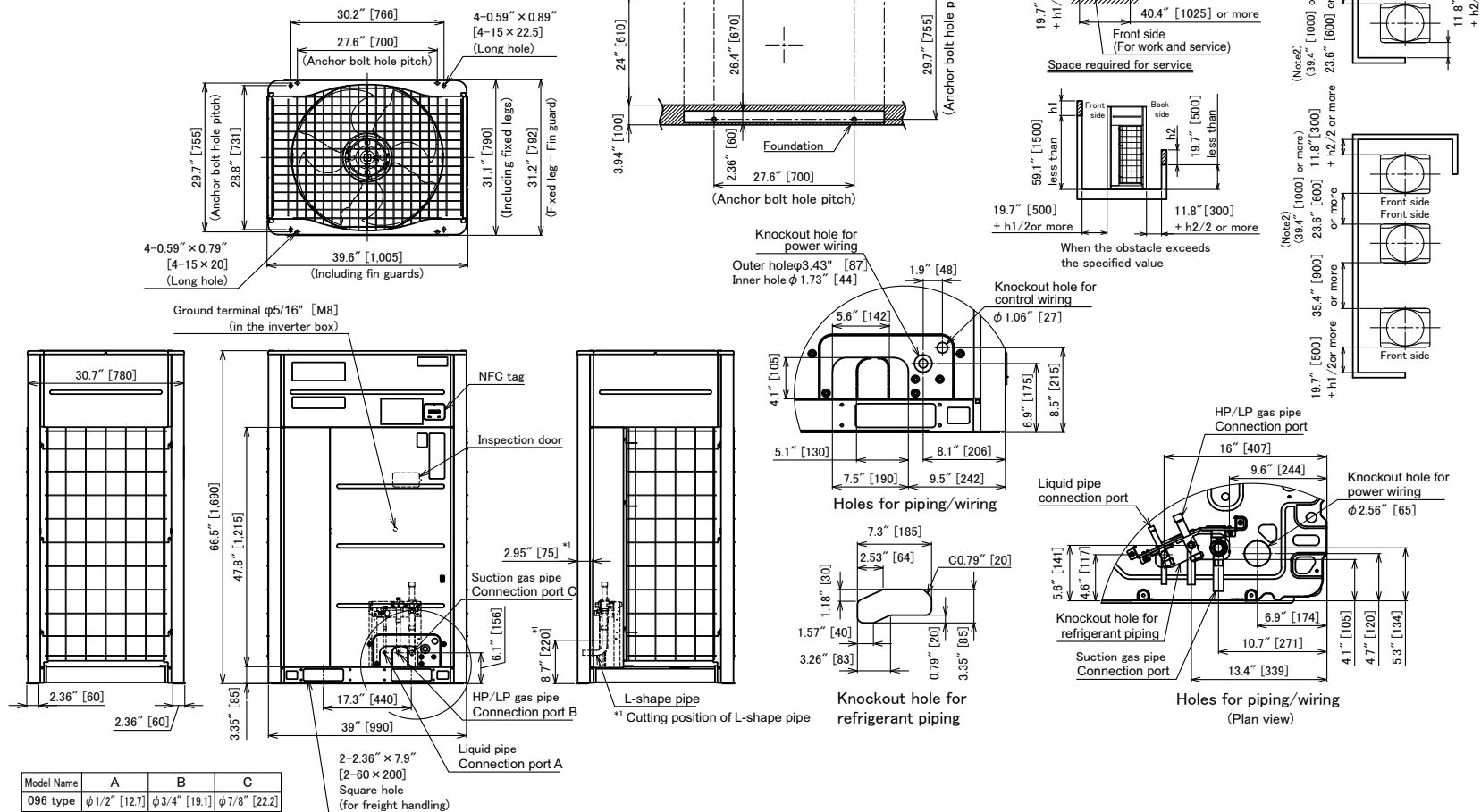
NOTE: Unit cabinet and coil slab shall be capable of withstanding 500-hour salt spray test.

# DIMENSIONAL DRAWING

## OUTDOOR UNIT MMY-MUP0961FT9P-UL

Note)

1. If there is an obstacle at the upper side of the outdoor unit,  
set the top end of the outdoor unit 78.7in [2000mm] apart from the obstacle.
2. Draw out the pipe procured locally to the front of the outdoor unit  
horizontally, and keep 19.7in [500mm] or more between the outdoor unit and  
traversing pipe if placing pipe transversely.



( Unit : in [mm] )

