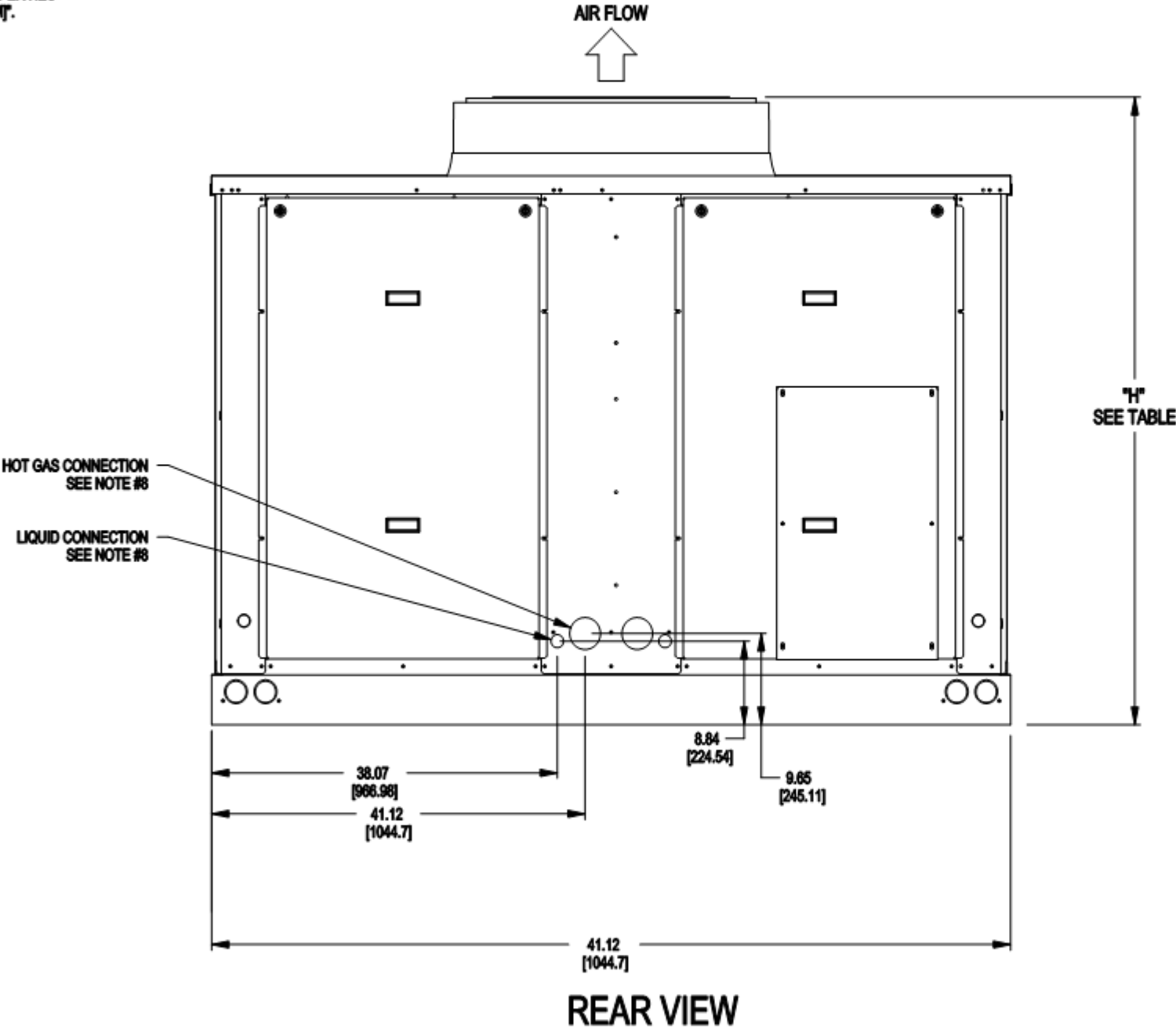


- NOTES:
1. BE SURE TO USE A WET RAG AND REMOVE ALL VALVE CORES BEFORE BRAZING FIELD PIPING.
 2. TEMPERATURE RELIEF DEVICE(S) LOCATED ON LIQUID LINE AND HAVE A 3/8" SAE FLARE CONNECTION. DO NOT CAP OR OTHERWISE OBSTRUCT THE TEMPERATURE/PRESSURE RELIEF.
 3. # 7/8" [22.41] PILOT HOLE PROVIDED FOR LOCATING FIELD POWER WIRING. ACTUAL HOLE REQUIRED DEPENDS ON FIELD WIRE SIZING.
 4. # 0.524" [13.30] HOLE USED FOR MOUNTING UNIT.
 5. UNIT MUST HAVE AIRFLOW CLEARANCES AS FOLLOWS:
TOP-DO NOT RESTRICT.
COIL SIDES - 42.0" [1067.00] FROM SOLID SURFACE
PANEL SIDES - 48.0" [1219.00] PER NEC
 6. CARRIER DOES NOT RECOMMEND INSTALLATION IN A PIT.
 7. UNIT CAN BE HANDLED USING THE FORK TRUCK LIFT POCKETS.
 8. THE LIQUID AND HOT GAS PIPING CONNECTION ENDS APPROXIMATELY 12 INCHES INSIDE THE UNIT.
FIELD INSTALLED SINGLE CIRCUIT MANIFOLD ENDS APPROXIMATELY 5 INCHES INSIDE THE UNIT.
COIL SIDES - 42.0" [1067.00] FROM SOLID SURFACE
PANEL SIDES - 48.0" [1219.00] PER NEC
 9. DIMENSIONS ARE IN "INCH [MM]".



UNIT	CIRCUIT	UNIT HEIGHT "H"	POWER ENTRY "P"	PIPING CONNECTION		CENTER OF GRAVITY		MACHINE OPTIONS	
				HOT GAS	LIQUID	X	Y	GREENSPEED	COIL TYPE
09RC035	SINGLE	66.5 [1689.10]	28.0 [710.68]	1-5/8"	7/8"	44.8 [1139]	43.4 [1102]	-	MCHX



P.O. BOX 4936, SYRACUSE, N.Y. 13221

JOB NAME:
job_name

BUYER:
buyer_name

SALES ENG.:
sales_eng

MODEL NO.:
model_number

JOB NO.:
job_number

P.O. NO.:

PREPARED BY:
prepared_by

ELECTRICAL
CHARACTERISTICS:
elect_char

JOBSITE LOCATION:
Job_Location 1
Job_Location 2

SALES OFFICE:
sales_office

REFRIGERANT NO.:

NOTES:
Notes_1
Notes_2

09RC-035-STD-R
MACHINE ASSEMBLY
REAR VIEW

DATE:

REVISION: _rev#

THIS DOCUMENT IS THE PRO-
PERTY OF CARRIER CORP.
AND IS DELIVERED UPON THE
EXPRESS CONDITION THAT THE
CONTENTS WILL NOT BE DIS-
CLOSED OR USED WITHOUT
CARRIER CORP. WRITTEN
CONSENT.

SUBMISSION OF THESE DWG'S.
OR DOCUMENTS DOES NOT
CONSTITUTE PART PERFOR-
MANCE OR ACCEPTANCE OF
CONTRACT.

CARRIER DWG # 09RC-035-STD-R

REV. - SHT 01 OF 01

DATE: 08/02/2024

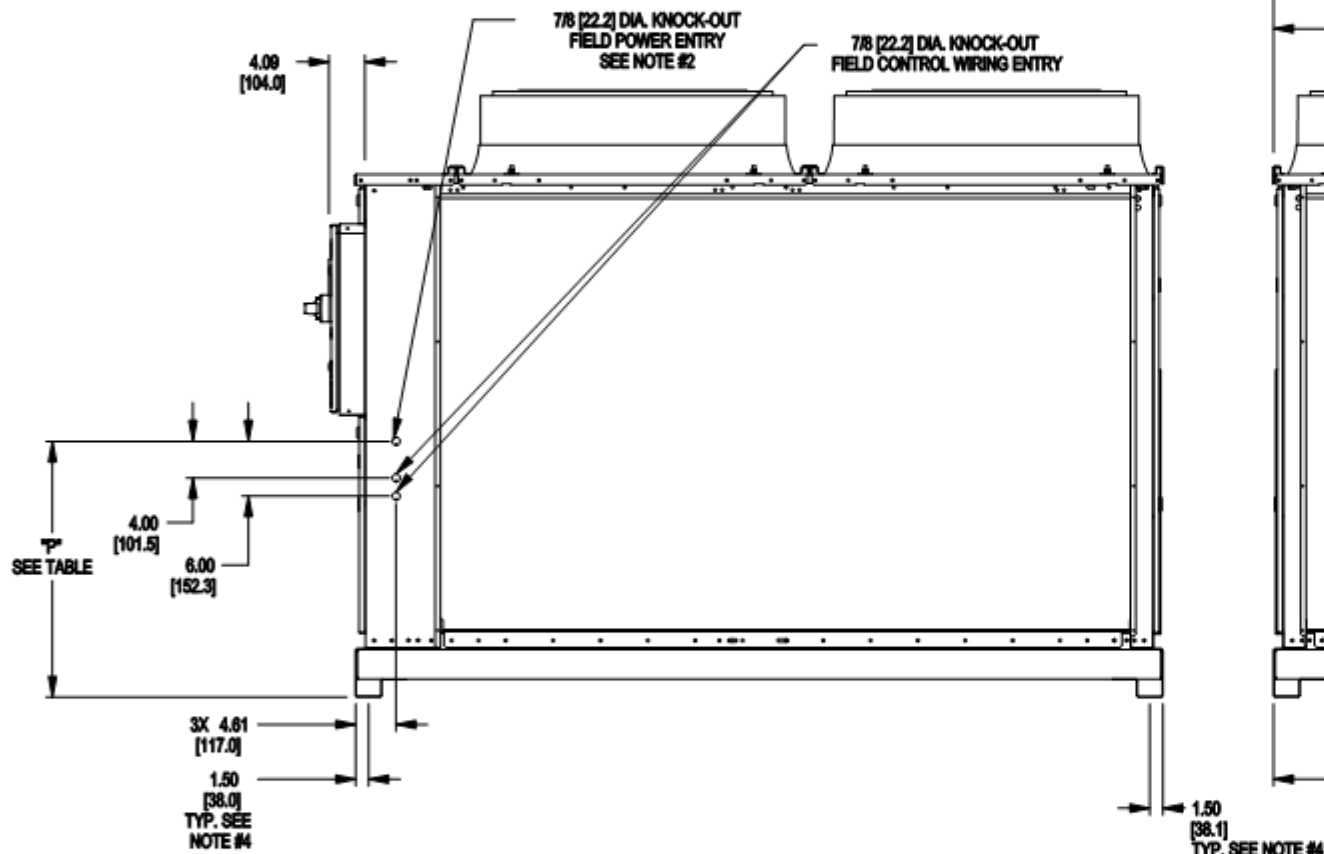
SUPERSEDES DWG. DATED:

09RC

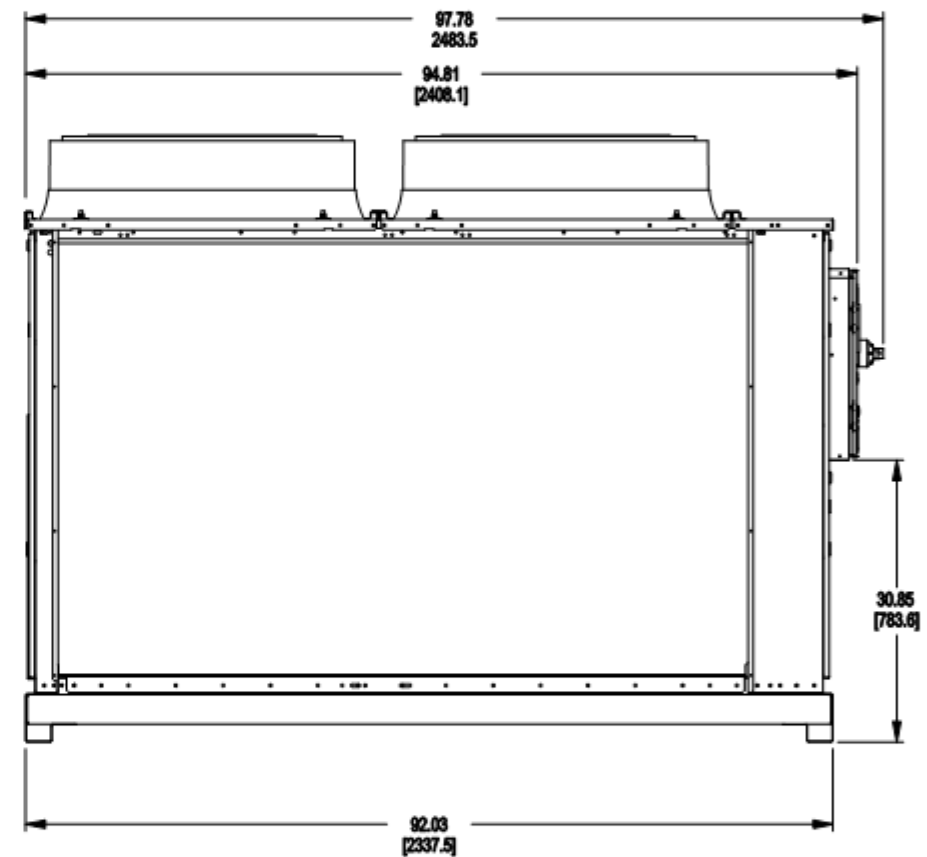
SHT 01 OF 04

NOTES:

1. BE SURE TO USE A WET RAG AND REMOVE ALL VALVE CORES BEFORE BRAZING FIELD PIPING.
2. TEMPERATURE RELIEF DEVICE(S) LOCATED ON LIQUID LINE AND HAVE A 3/8" SAE FLARE CONNECTION.
DO NOT CAP OR OTHERWISE OBSTRUCT THE TEMPERATURE/PRESSURE RELIEF.
3. \varnothing 7/8" [22.41] PILOT HOLE PROVIDED FOR LOCATING FIELD POWER WIRING. ACTUAL HOLE REQUIRED
DEPENDS ON FIELD WIRE SIZING.
4. \varnothing 0.524" [13.30] HOLE USED FOR MOUNTING UNIT.
5. UNIT MUST HAVE AIRFLOW CLEARANCES AS FOLLOWS:
TOP-DO NOT RESTRICT.
COIL SIDES - 42.0" [1067.00] FROM SOLID SURFACE
PANEL SIDES - 48.0" [1219.00] PER NEC
6. CARRIER DOES NOT RECOMMEND INSTALLATION IN A PIT.
7. UNIT CAN BE HANDLED USING THE FORK TRUCK LIFT POCKETS.
8. THE LIQUID AND HOT GAS PIPING CONNECTION ENDS APPROXIMATELY 12 INCHES INSIDE THE UNIT.
FIELD INSTALLED SINGLE CIRCUIT MANIFOLD ENDS APPROXIMATELY 5 INCHES INSIDE THE UNIT.
COIL SIDES - 42.0" [1067.00] FROM SOLID SURFACE
PANEL SIDES - 48.0" [1219.00] PER NEC
9. DIMENSIONS ARE IN "INCH [MM]".



RIGHT SIDE VIEW



LEFT SIDE VIEW

UNIT	CIRCUIT	UNIT HEIGHT "H"	POWER ENTRY "P"	PIPING CONNECTION		CENTER OF GRAVITY		MACHINE OPTIONS	
				HOT GAS	LIQUID	X	Y	GREENSPEED	COIL TYPE
09RC035	SINGLE	66.5 [1689.10]	28.0 [710.69]	1-5/8"	7/8"	44.8 [1139]	43.4 [1102]	-	MCHX



P.O. BOX 4936, SYRACUSE, N.Y. 13221

JOB NAME:
job_name

BUYER:
buyer_name

SALES ENG.:
sales_eng

MODEL NO.:
model_number

JOB NO.:
job_number

P.O. NO.:

PREPARED BY:
prepared_by

ELECTRICAL
CHARACTERISTICS:
elect_char

JOBSITE LOCATION:
Job_Location 1
Job_Location 2

SALES OFFICE:
sales_office

REFRIGERANT NO.:

NOTES:
Notes_1
Notes_2

09RC-035-STD-S
MACHINE ASSEMBLY
SIDE VIEW

DATE:

REVISION: _rev#

THIS DOCUMENT IS THE PRO-
PERTY OF CARRIER CORP.
AND IS DELIVERED UPON THE
EXPRESS CONDITION THAT THE
CONTENTS WILL NOT BE DIS-
CLOSED OR USED WITHOUT
CARRIER CORP. WRITTEN
CONSENT.

SUBMISSION OF THESE DWG'S.
OR DOCUMENTS DOES NOT
CONSTITUTE PART PERFOR-
MANCE OR ACCEPTANCE OF
CONTRACT.

CARRIER DWG # 09RC-035-STD-S

REV. - SHT 01 OF 01

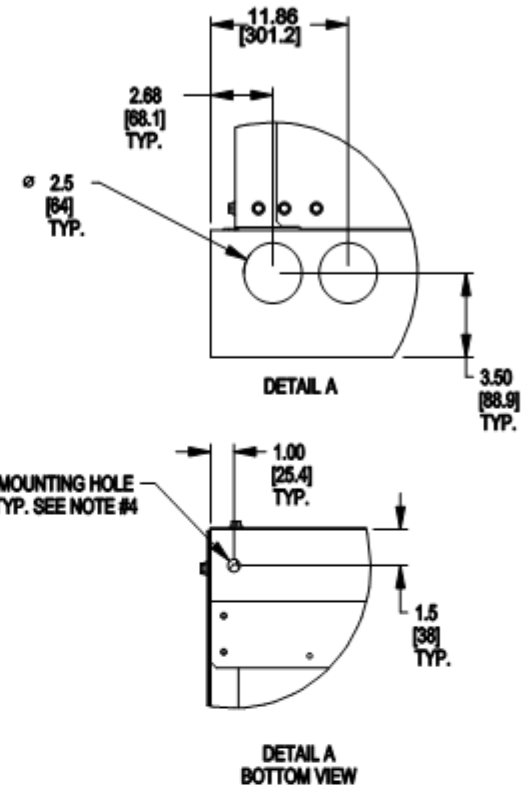
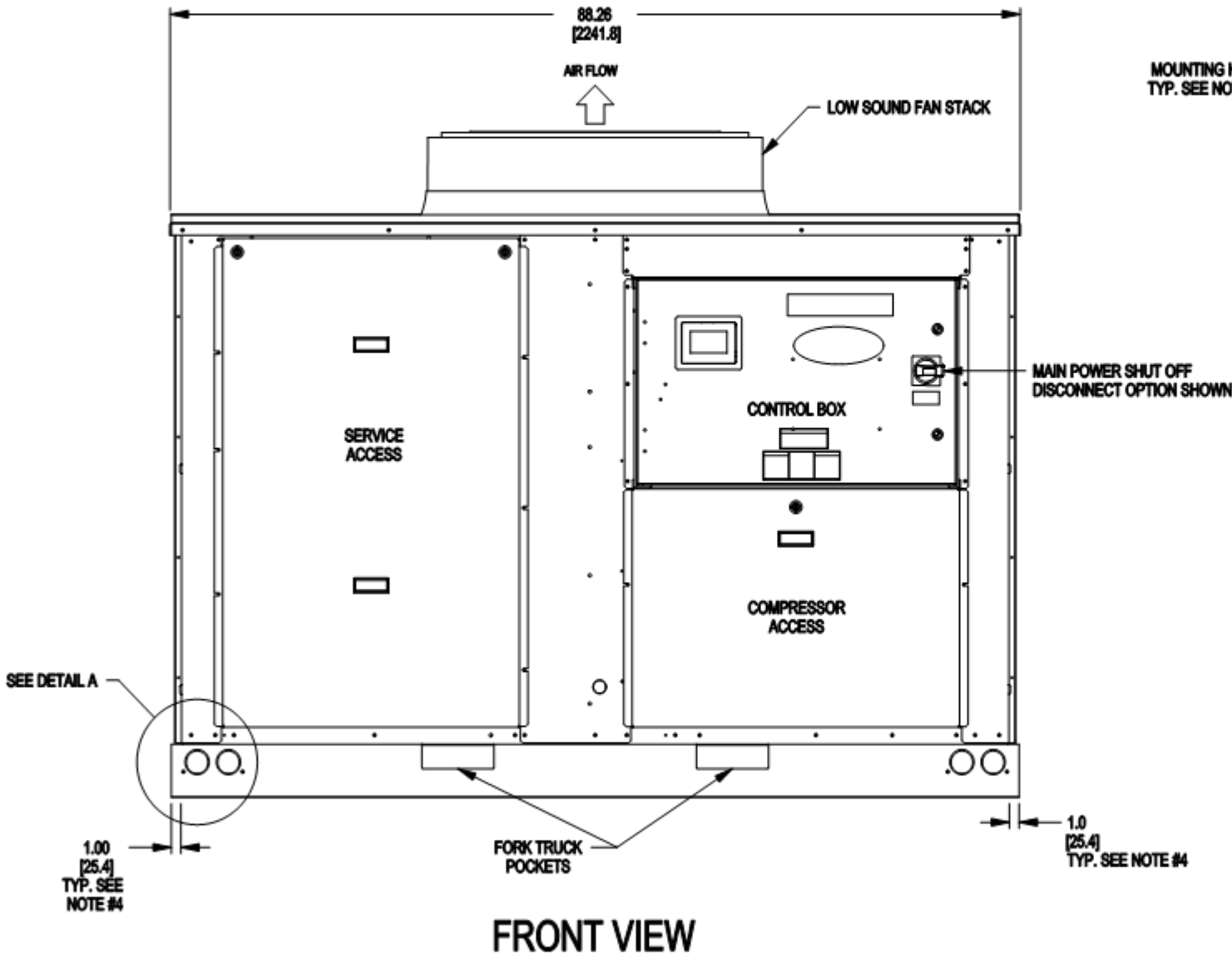
DATE: 08/02/2024

SUPERSEDES DWG. DATED:

09RC

SHT 02 OF 04

- NOTES:
1. BE SURE TO USE A WET RAG AND REMOVE ALL VALVE CORES BEFORE BRAZING FIELD PIPING.
 2. TEMPERATURE RELIEF DEVICE(S) LOCATED ON LIQUID LINE AND HAVE A 3/8" SAE FLARE CONNECTION. DO NOT CAP OR OTHERWISE OBSTRUCT THE TEMPERATURE/PRESSURE RELIEF.
 3. # 7/8" [22.4] PILOT HOLE PROVIDED FOR LOCATING FIELD POWER WIRING. ACTUAL HOLE REQUIRED DEPENDS ON FIELD WIRE SIZING.
 4. # 0.524" [13.30] HOLE USED FOR MOUNTING UNIT.
 5. UNIT MUST HAVE AIRFLOW CLEARANCES AS FOLLOWS:
TOP-DO NOT RESTRICT.
COIL SIDES - 42.0" [1067.00] FROM SOLID SURFACE
PANEL SIDES - 48.0" [1219.00] PER NEC
 6. CARRIER DOES NOT RECOMMEND INSTALLATION IN A PIT.
 7. UNIT CAN BE HANDLED USING THE FORK TRUCK LIFT POCKETS.
 8. THE LIQUID AND HOT GAS PIPING CONNECTION ENDS APPROXIMATELY 12 INCHES INSIDE THE UNIT.
FIELD INSTALLED SINGLE CIRCUIT MANIFOLD ENDS APPROXIMATELY 5 INCHES INSIDE THE UNIT.
COIL SIDES - 42.0" [1067.00] FROM SOLID SURFACE
PANEL SIDES - 48.0" [1219.00] PER NEC
 9. DIMENSIONS ARE IN "INCH [MM]".



UNIT	CIRCUIT	UNIT HEIGHT "F"	POWER ENTRY "F"	PIPING CONNECTION		CENTER OF GRAVITY		MACHINE OPTIONS	
				HOT GAS	LIQUID	X	Y	GREENSPEED	COIL TYPE
09RC035	SINGLE	66.5 [1689.10]	28.0 [710.69]	1-5/8"	7/8"	44.8 [1139]	43.4 [1102]	-	MCHX



JOB NAME:
job_name

BUYER:
buyer_name

SALES ENG.:
sales_eng

MODEL NO.:
model_number

JOB NO.:
job_number

P.O. NO.:

PREPARED BY:
prepared_by

ELECTRICAL
CHARACTERISTICS:
elect_char

JOBSITE LOCATION:
Job_Location 1
Job_Location 2

SALES OFFICE:
sales_office

REFRIGERANT NO.:

NOTES:
Notes_1
Notes_2

09RC-035-STD-F
MACHINE ASSEMBLY
FRONT VIEW

DATE:

REVISION: _rev#

THIS DOCUMENT IS THE PRO-
PERTY OF CARRIER CORP.
AND IS DELIVERED UPON THE
EXPRESS CONDITION THAT THE
CONTENTS WILL NOT BE DIS-
CLOSED OR USED WITHOUT
CARRIER CORP. WRITTEN
CONSENT.

SUBMISSION OF THESE DWG'S.
OR DOCUMENTS DOES NOT
CONSTITUTE PART PERFOR-
MANCE OR ACCEPTANCE OF
CONTRACT.

CARRIER DWG # 09RC-035-STD-F

REV. - SHT 01 OF 01

DATE: 08/02/2024

SUPERSEDES DWG. DATED:

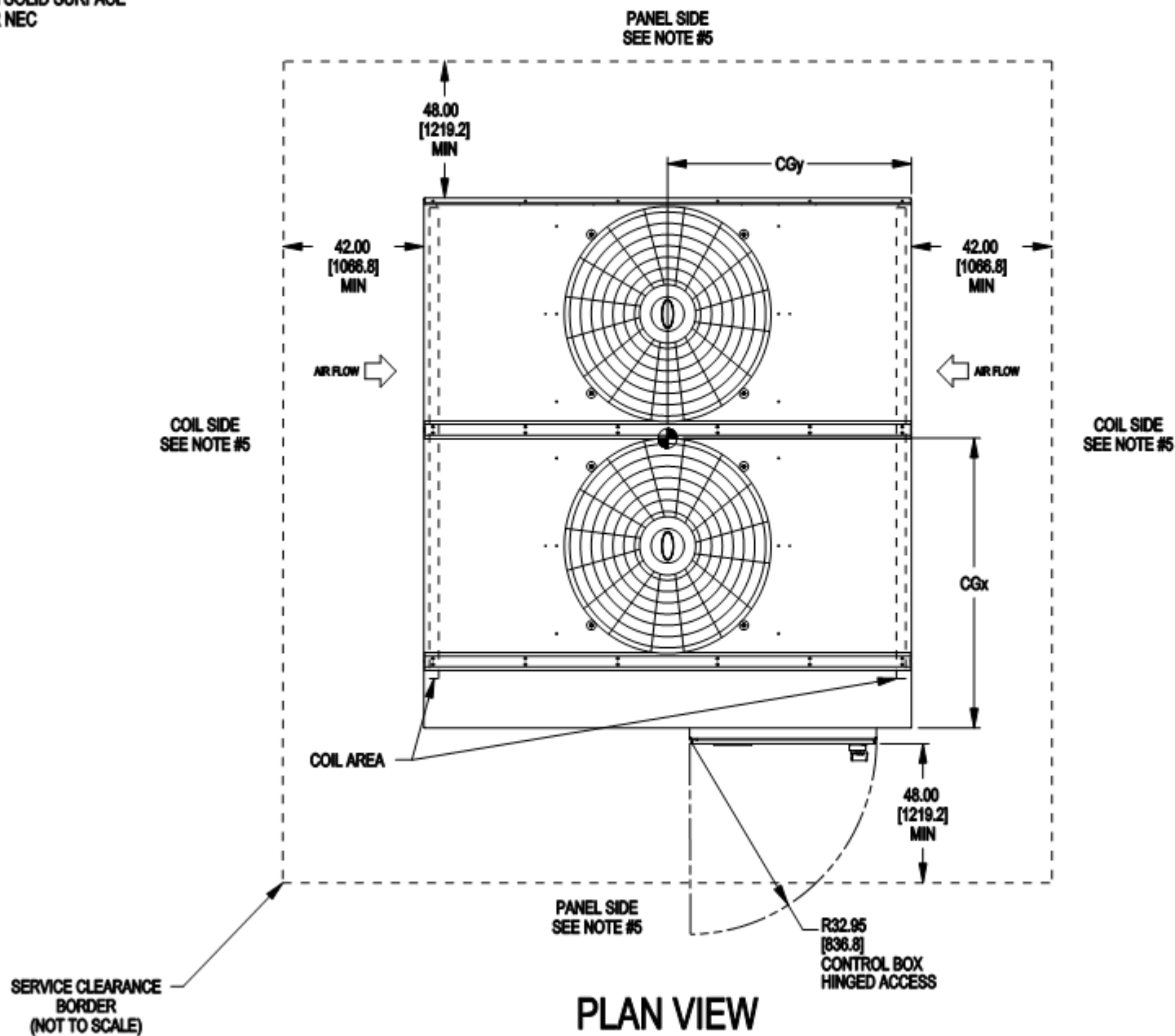
-

09RC

SHT 03 OF 04

NOTES:

1. BE SURE TO USE A WET RAG AND REMOVE ALL VALVE CORES BEFORE BRAZING FIELD PIPING.
2. TEMPERATURE RELIEF DEVICE(S) LOCATED ON LIQUID LINE AND HAVE A 3/8" SAE FLARE CONNECTION.
DO NOT CAP OR OTHERWISE OBSTRUCT THE TEMPERATURE/PRESSURE RELIEF.
3. \varnothing 7/8" [22.41] PILOT HOLE PROVIDED FOR LOCATING FIELD POWER WIRING. ACTUAL HOLE REQUIRED
DEPENDS ON FIELD WIRE SIZING.
4. \varnothing 0.524" [13.30] HOLE USED FOR MOUNTING UNIT.
5. UNIT MUST HAVE AIRFLOW CLEARANCES AS FOLLOWS:
TOP-DO NOT RESTRICT.
COIL SIDES - 42.0" [1067.00] FROM SOLID SURFACE
PANEL SIDES - 48.0" [1219.00] PER NEC
6. CARRIER DOES NOT RECOMMEND INSTALLATION IN A PIT.
7. UNIT CAN BE HANDLED USING THE FORK TRUCK LIFT POCKETS.
8. THE LIQUID AND HOT GAS PIPING CONNECTION ENDS APPROXIMATELY 12 INCHES INSIDE THE UNIT.
FIELD INSTALLED SINGLE CIRCUIT MANIFOLD ENDS APPROXIMATELY 5 INCHES INSIDE THE UNIT.
COIL SIDES - 42.0" [1067.00] FROM SOLID SURFACE
PANEL SIDES - 48.0" [1219.00] PER NEC
9. DIMENSIONS ARE IN "INCH [MM]".



UNIT	CIRCUIT	UNIT HEIGHT "H"	POWER ENTRY "P"	PIPING CONNECTION		CENTER OF GRAVITY		MACHINE OPTIONS	
				HOT GAS	LIQUID	X	Y	GREENSPEED	COIL TYPE
09RC035	SINGLE	66.5 [1689.10]	28.0 [710.69]	1-5/8"	7/8"	44.8 [1139]	43.4 [1102]	-	MCHX



P.O. BOX 4906, SYRACUSE, N.Y. 13221

JOB NAME:
job_name

BUYER:
buyer_name

SALES ENG.:
sales_eng

MODEL NO.:
model_number

JOB NO.:
job_number

P.O. NO.:

PREPARED BY:
prepared_by

ELECTRICAL
CHARACTERISTICS:
elect_char

JOBSITE LOCATION:
Job_Location 1
Job_Location 2

SALES OFFICE:
sales_office

REFRIGERANT NO.:

NOTES:
Notes_1
Notes_2

09RC-035-STD-P
MACHINE ASSEMBLY
PLAN VIEW

DATE:

REVISION: _rev#

THIS DOCUMENT IS THE PRO-
PERTY OF CARRIER CORP.
AND IS DELIVERED UPON THE
EXPRESS CONDITION THAT THE
CONTENTS WILL NOT BE DIS-
CLOSED OR USED WITHOUT
CARRIER CORP. WRITTEN
CONSENT.

SUBMISSION OF THESE DWG'S.
OR DOCUMENTS DOES NOT
CONSTITUTE PART PERFOR-
MANCE OR ACCEPTANCE OF
CONTRACT.

CARRIER DWG # 09RC-035-STD-P

REV. - SHT 01 OF 01

DATE: 08/02/2024

SUPERSEDES DWG. DATED:
-

09RC

SHT 04 OF 04