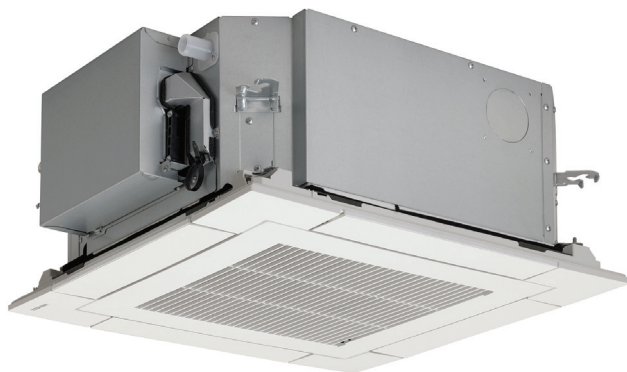


# SMMSu / SHRMu VRF Indoor Unit MMU-UP0091MH-UL—Compact 4-Way-Cassette

**TOSHIBA**  
*Carrier*

## Submittal Data

Job Name \_\_\_\_\_ Location \_\_\_\_\_  
Tag \_\_\_\_\_



### SMMSu / SHRMu VRF Compact 4-Way Cassette Features

- R-410A refrigerant
- Five sizes from 7,500 to 18,000 Btu/h
- Standard condensate pump with 25.0 in. lift capacity
- Quiet operation (as low as 31 dBA)
- Independent louver control (fixed or swing)
- Optional wired or wireless controls
- Auto or manually set three fan speeds
- Easy to remove cleanable filter
- Five-year parts limited warranty

| INDOOR UNIT MODEL              |         | MMU-UP0091MH-UL    |
|--------------------------------|---------|--------------------|
| <b>PERFORMANCE</b>             |         |                    |
| Cooling Rated Capacity         | Btu/h   | 9,500              |
| Heating Rated Capacity         | Btu/h   | 10,500             |
| Fan Type (Qty)                 |         | Turbo (1)          |
| Airflow (H / M/L)              | CFM     | 340 / 280 / 220    |
| Sound Pressure (H / M/L)       | dBA     | 40 / 35 / 31       |
| <b>ELECTRICAL</b>              |         |                    |
| Power Supply                   | V/Ph/Hz | 208-230/1/60       |
| Power Consumption (Input)      | kW      | 0.025              |
| Full Load Amps (FLA)           | A       | 0.4                |
| Minimum Circuit Amps (MCA)     | A       | 0.5                |
| Maximum Overcurrent Protection | A       | 15                 |
| <b>MOTOR</b>                   |         |                    |
| Motor Type                     |         | DC Inverter Driven |
| Motor Watts                    | W       | 60                 |

|   |     |                |
|---|-----|----------------|
| <b>PHYSICAL DATA</b>                          |     |                |
| Pipe Connection Size - Liquid (High Pressure) | in. | 1/4 (Flare)    |
| Pipe Connection Size - Gas (Low Pressure)     | in. | 3/8 (Flare)    |
| Pipe Connection Size - Drain (OD)             | in. | 1-1/4          |
| Pipe Connection Size - Drain (ID)             | in. | 1              |
| Refrigerant                                   |     | R-410A         |
| External Finish                               |     | Mansell 5PB9/1 |
| Unit Width                                    | in. | 22-5/8         |
| Unit Height                                   | in. | 10-1/8         |
| Unit Depth                                    | in. | 22-5/8         |
| Unit Net Weight                               | lb  | 33.10          |
| Panel Width                                   | in. | 24-3/8         |
| Panel Height                                  | in. | 1/2            |
| Panel Depth                                   | in. | 24-3/8         |
| Panel Net Weight                              | lb  | 5.50           |

### ACCESSORIES (Optional)

- ☐ Wired Remote Controller (7-Day Programmable) - RBC-AMS54E-UL / RBC-AWSU52-UL
- ☐ Simple Wired Remote Control - RBC-AS41UL
- ☐ Wireless Remote Control Kit RBC-AXU31IM-UL
- ☐ Remote Sensor TCB-TC41U-UL
- ☐ Grille Panel RBC-UM21PG-UL
- ☐ Occupy Sensor RCB-SIR41UM-E
- ☐ Auxiliary Fresh Air Flange TCB-FF101URUL

# DIMENSIONAL DRAWING INDOOR UNIT COMPACT 4-WAY CASSETTE MMU-UP0091MH-UL

