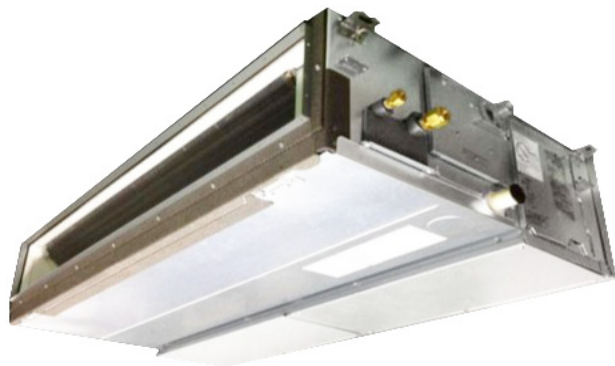


SMMSu / SHRMu VRF Indoor Unit MMD-UP0241HP-UL—HIGH STATIC DUCT

TOSHIBA
Carrier

Submittal Data

Job Name _____ Location _____
Tag _____



SMMSu / SHRMu VRF High Static Ducted Features

- R-410A refrigerant
- Seven sizes from 24,000 to 96,000 Btu/h
- Quiet operation, as low as 30 dBA
- Rear return
- 208/230V DC motor
- Five-year parts limited warranty
- Standard condensate pump with 24.3 in. lift capability

INDOOR UNIT MODEL		MMD-UP0241HP-UL	
PERFORMANCE			
Cooling Rated Capacity	Btu/h	24,000	
Heating Rated Capacity	Btu/h	27,000	
Fan Type (Qty)	Centrifugal (2)		
Airflow, Standard Range (H / M / L)	CFM	705 / 570 / 470	
Sound Pressure, 208V/230 (H / M / L)	dBA	45 / 35 / 30	
External Static Pressure (ESP)	in.WG	0.8 (Factory Default)	
		1.0 (Max.)	
FILTER (Optional, Accessory Required)			
Type	Washable		
Quantity	1		
MERV Corresponding Value	5		
Dimensions (W x L x D)	in.	10-5/8 x 19-5/8 x 5/8	
ELECTRICAL			
Power Supply	V/Ph/Hz	208-230/1/60	
Power Consumption (208/230 V)	kW	0.255	
Full Load Amps (FLA)	A	2.07	
Minimum Circuit Amps (MCA)	A	2.59	
Maximum Overcurrent Protection (MOCP)	A	15.0	

MOTOR		
Motor Type	DC	
Motor Watts	W	250
PHYSICAL DATA		
Pipe Connection Size - Liquid (High Pressure)	in.	3/8 (Flare)
Pipe Connection Size - Gas (Low Pressure)	in.	5/8 (Flare)
Pipe Connection Size - Drain (OD)	in.	1-1/4
Pipe Connection Size - Drain (ID)	in.	1
Refrigerant	R-410A	
External Finish	Zinc Hot Dipped Steel Plate	
Unit Width	in.	39-3/8
Unit Height	in.	11-3/4
Unit Depth	in.	29-5/8
Net Weight	lb	80

ACCESSORIES

- ☐ Wired Remote Controller (7-Day Programmable) - RBC-AMS54E-UL / RBC-AWSU52-UL
- ☐ Simple Wired Remote Control - RBC-AS41UL
- ☐ Remote Sensor TCB-TC41U-UL
- ☐ Filter - TCB-LK801D-E
- ☐ Zoning Duct Flange - TCB-SF80C6BP-UL
- ☐ Auxiliary Fresh Air Flange - TCB-FF151US-UL

INDOOR UNIT HIGH STATIC DUCT MMD-UP0241HP-UL

