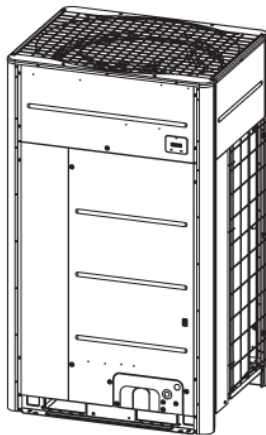


# VRF Outdoor Unit MMY-MUP0721FT6P-UL - Heat Recovery

**TOSHIBA**  
*Carrier*

## Submittal Data

Job Name \_\_\_\_\_ Location \_\_\_\_\_  
Tag \_\_\_\_\_



A210612

### Heat Recovery Features

- Modules and pairings available from 6 to 30 tons
- Modules have inverter-driven scroll compressors
- Direct-drive, inverter-driven outdoor motor
- Up to 3937 ft actual total system piping (liquid line)
- 656 ft (200 m) actual piping length from outdoor unit to furthest fan coil

- Operating temperature range  
Cooling (db): -10° to 125°F (-15° to 52°C)  
Heating (wb): -22° to 60°F (-25° to 18°C)
- Protection: high pressure sensor and switch, low pressure sensor and switch, process controller board fuse, inverter overload protection
- 7-year compressor limited warranty
- 5-year parts limited warranty

Header Unit Model		MMY-MUP0721FT6P-UL
<b>PERFORMANCE</b>		
Nominal Cooling Capacity	Btu/h	72,000
Nominal Heating Capacity	Btu/h	81,000
Maximum Number of Indoor Units		12
<b>SIMULTANEOUS COOLING AND HEATING EFFICIENCY†</b>		
SCHE, Ducted FCUs		34.0
SCHE, Ductless FCUs		35.0
<b>COOLING EFFICIENCY†</b>		
EER/IEER, Ducted FCUs	Btu/Wh	12.6/23.4
Power Consumption, Ducted FCUs	kW	4.69
EER/IEER, Ductless FCUs	Btu/Wh	13.5/26.5
Power Consumption, Ductless FCUs	kW	4.97
<b>HEATING EFFICIENCY†</b>		
COP at 47°F, Ducted FCUs		4.18
Power Consumption, Ducted FCUs	kW	4.61
COP at 47°F, Ductless FCUs		4.55
Power Consumption, Ductless FCUs	kW	4.81
Fan Type (Qty)		Propeller (1)
Airflow, Standard Range	CFM	5721
Sound Pressure	dBA	56.0
External Static Pressure*	in. wg	0.321

### LEGEND

db	—	Dry Bulb
COP	—	Coefficient of Performance
EER	—	Energy Efficiency Ratio
FCU	—	Fan Coil Unit
IEER	—	Integrated Energy Efficiency Ratio
wb	—	Wet Bulb
SCHE	—	Simultaneous Cooling and Heating Efficiency

<b>ELECTRICAL</b>		
Power Supply	V/Ph/Hz	460/3/60
Minimum Circuit Amps (MCA)	A	17.4
Maximum Overcurrent Protection (MOCP)	A	20
<b>COMPRESSORS</b>		
Type (Number)		Hermetic Twin Rotary (1)
<b>FAN MOTOR</b>		
Motor Output	kW	0.43 x 1
<b>PHYSICAL DATA</b>		
Pipe Connection Size - Liquid (High Pressure)	in.	1/2 (Brazed)
Pipe Connection Size - Gas (Low Pressure)	in.	3/4 (Brazed)
Discharge - Gas (High/Low Pressure)		3/4 (Brazed)
Refrigerant		R-410A
Factory Charge††	lb	13.2
Unit Width	in.	39-1/2
Unit Height	in.	66-1/2
Unit Depth	in.	31-1/4
Net Weight	lb	552

†Rated per AHRI (Air-Conditioning, Heating and Refrigeration Institute) 1230 Standard.

Cooling: Indoor 80°F (27°C) db/67°F (20°C) wb; Outdoor 95°F (35°C) db

Heating: Indoor 70°F (21°C) db; Outdoor 47°F (8°C) db/43°F (6°C) wb

\*Requires setting by menu functions.

††Additional charge required.

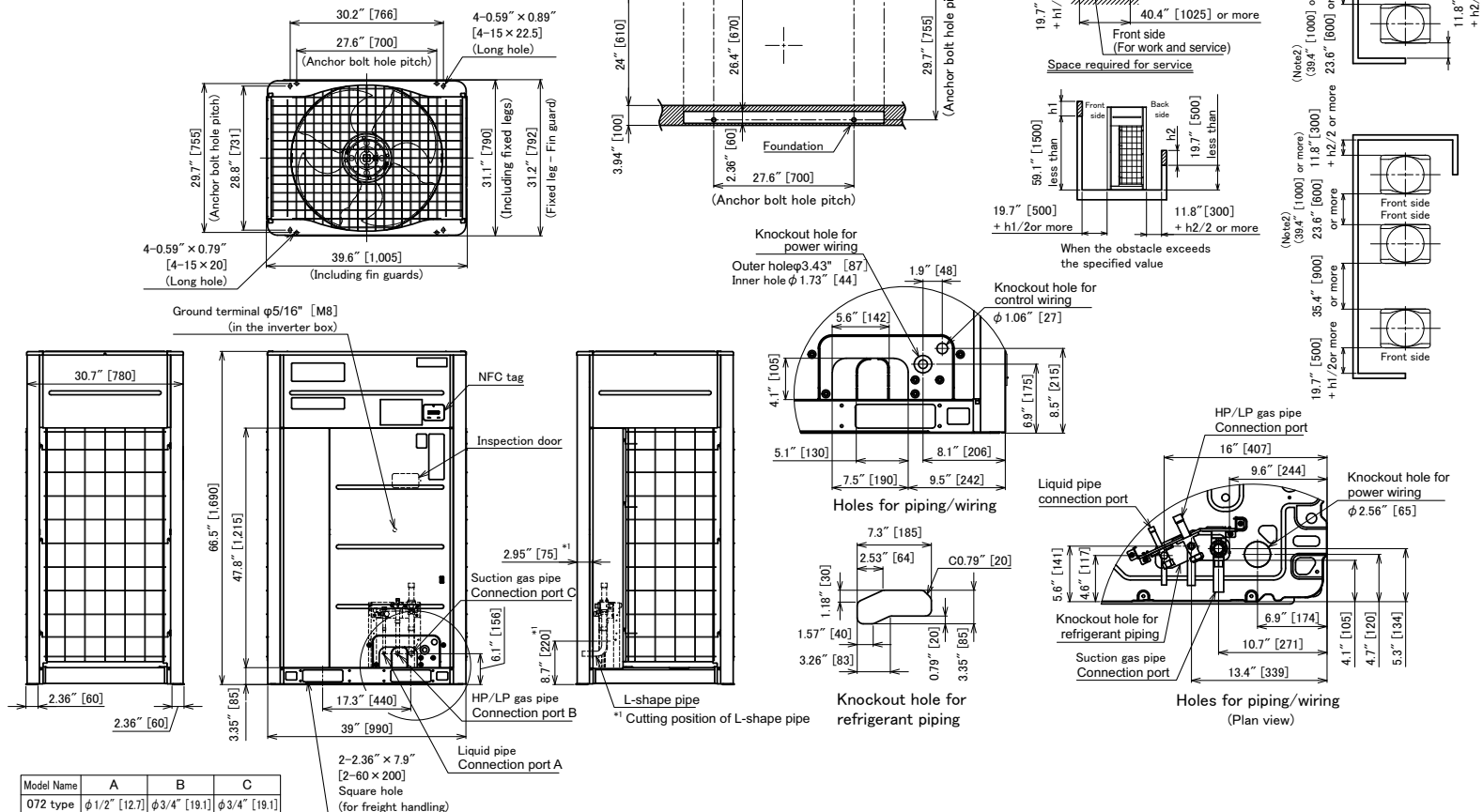
NOTE: Unit cabinet and coil slab shall be capable of withstanding 500-hour salt spray test.

## DIMENSIONAL DRAWING

### OUTDOOR UNIT MMY-MUP0721FT6P-UL

Note)

1. If there is an obstacle at the upper side of the outdoor unit, set the top end of the outdoor unit 78.7in [2000mm] apart from the obstacle.
2. Draw out the pipe procured locally to the front of the outdoor unit horizontally, and keep 19.7in [500mm] or more between the outdoor unit and traversing pipe if placing pipe transversely.



( Unit : in [mm] )

