

# SMMSu VRF u-Series Outdoor Unit MMY-UP192H1HT6P-UL—Heat Pump (Elite Heat)

**TOSHIBA**  
*Carrier*

## Submittal Data

Job Name \_\_\_\_\_ Location \_\_\_\_\_

Tag \_\_\_\_\_



A230331

### SMMSu VRF Heat Pump (Elite Heat) Features

- Energy-efficient priority design
- Super-efficient heat exchanger
- Refrigerant cooling inverter system
- Intelligent VRF control
- Less refrigerant
- Space efficient design
- Configuration flexibility
- Wider Operating temperature range
- Comprehensive System construction solution
- Comprehensive Service solution

|                                      |         |                                   |
|--------------------------------------|---------|-----------------------------------|
| Header Unit Model                    |         | MMY-UP192H1HT6P-UL                |
| Outdoor Unit Model Name              |         | MUP096H1HT6P-UL + MUP096H1HT6P-UL |
| <b>PERFORMANCE</b>                   |         |                                   |
| Nominal Cooling Capacity†            | Btu/h   | 192,000                           |
| Nominal Heating Capacity†            | Btu/h   | 216,000                           |
| Maximum number of indoor units       |         | 34                                |
| Total Connected Indoor Unit Capacity |         | 288                               |
| <b>COOLING EFFICIENCY†</b>           |         |                                   |
| EER (Non-Ducted)                     | Btu/Wh  | 11.5                              |
| Power Consumption (Non-Ducted)       | kW      | 15.99                             |
| EER (Ducted)                         | Btu/Wh  | 12.1                              |
| Power Consumption (Ducted)           | kW      | 15.15                             |
| <b>HEATING EFFICIENCY†</b>           |         |                                   |
| COP (Non-Ducted)                     | Btu/Wh  | 4.6                               |
| Power Consumption (Non-Ducted)       | kW      | 13.25                             |
| COP (Ducted)                         | Btu/Wh  | 4.5                               |
| Power Consumption (Ducted)           | kW      | 13.29                             |
| <b>FAN</b>                           |         |                                   |
| Fan Type                             |         | Propeller                         |
| Airflow                              | CFM     | 7770 + 7770                       |
| Motor Output                         | kW      | 0.33 x 2 + 0.33 x 2               |
| <b>ELECTRICAL</b>                    |         |                                   |
| Power Supply                         | V/Ph/Hz | 460/3/60                          |
| MCA                                  | A       | 24.9 + 24.9                       |
| MOCP                                 | A       | 25.0 + 25.0                       |

### COMPRESSORS

|               |                          |           |
|---------------|--------------------------|-----------|
| Type (Number) | Hermetic Twin Rotary (1) |           |
| Motor Output  | kW                       | 6.3 + 6.3 |

### PHYSICAL DATA

|   |     |                   |               |
|---|-----|-------------------|---------------|
| Pipe Connection Size - Liquid (High Pressure) | in. | 1/2 (Brazing)     | 1/2 (Brazing) |
| Pipe Connection Size - Gas (Low Pressure)     | in. | 7/8 (Brazing)     | 7/8 (Brazing) |
| Refrigerant                                   |     | R-410A            |               |
| Factory Charge††                              | lb  | 19.8 + 19.8       |               |
| External Finish                               |     | Munsell 1Y8.5/0.5 |               |
| Unit Width                                    | in. | 51.4 + 39.6       |               |
| Unit Height                                   | in. | 66.5 + 66.5       |               |
| Unit Depth                                    | in. | 31.1 + 31.1       |               |
| Unit Net Weight                               | lb  | 721 + 721         |               |

### LEGEND

|             |   |                                |
|-------------|---|--------------------------------|
| <b>EER</b>  | — | Energy Efficiency Ratio        |
| <b>COP</b>  | — | Coefficient of Performance     |
| <b>MCA</b>  | — | Minimum Circ Amps              |
| <b>MOCP</b> | — | Maximum Overcurrent Protection |

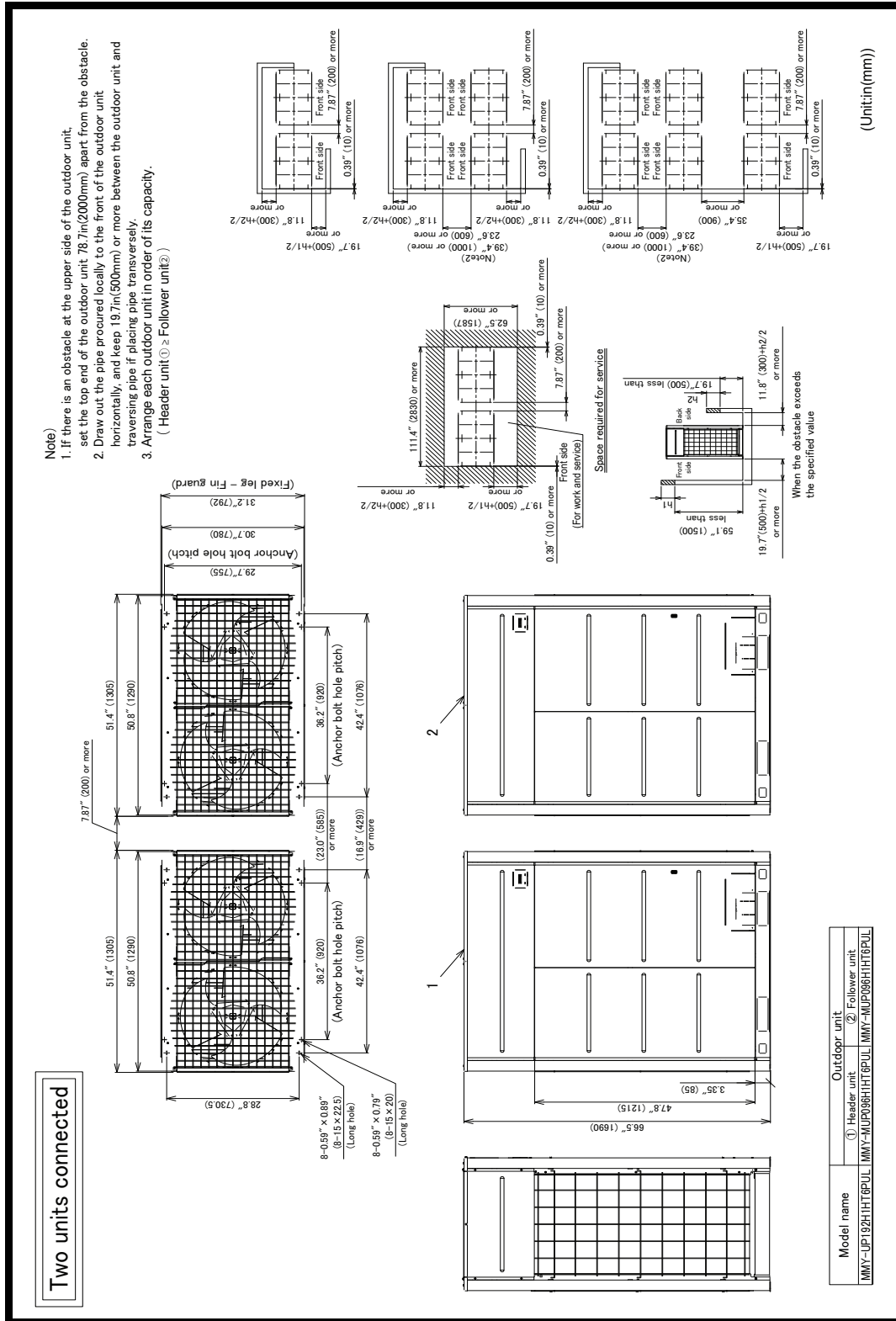
†Rated per AHRI (Air-Conditioning, Heating and Refrigeration Institute) 210/240 Standard.

Cooling: Indoor 80°F (27°C) db/67°F (20°C) wb; Outdoor 95°F (35°C) db

Heating: Indoor 70°F (21°C) db; Outdoor 47°F (8°C) db/43°F (6°C) wb

††Additional charge required.

## OUTDOOR UNIT HEAT PUMP (ELITE HEAT) MMY-UP192H1HT6P-UL DIMENSIONAL DRAWING



A230332

