

SMMSu VRF u-Series Outdoor Unit MMY-MUP0961HT9P-UL—Heat Pump

TOSHIBA
Carrier

Submittal Data

Job Name _____ Location _____

Tag _____



A230327

SMMSu VRF Heat Pump Features

- Energy-efficient priority design
- Super-efficient heat exchanger
- Refrigerant cooling inverter system
- Intelligent VRF control
- Less refrigerant
- Space efficient design
- Configuration flexibility
- Wider Operating temperature range
- Comprehensive System construction solution
- Comprehensive Service solution

Header Unit Model	MMY-MUP0961HT9P-UL	
PERFORMANCE		
Nominal Cooling Capacity†	Btu/h	96,000
Nominal Heating Capacity†	Btu/h	108,000
Maximum number of indoor units		17
Total Connected Indoor Unit Capacity		192
COOLING EFFICIENCY†		
EER (Non-Ducted)	Btu/Wh	14.10
Power Consumption (Non-Ducted)	kW	6.51
EER (Ducted)		13.80
Power Consumption (Ducted)	kW	6.64
HEATING EFFICIENCY†		
COP (Non-Ducted)	Btu/Wh	4.30
Power Consumption (Non-Ducted)	kW	6.96
COP (Ducted)	Btu/Wh	4.20
Power Consumption (Ducted)		7.19
FAN		
Fan Type		Propeller
Airflow	CFM	6180
Motor Output	kW	0.59 x 1
ELECTRICAL		
Power Supply	V/Ph/Hz	230/3/60
MCA	A	36.6
MOCP	A	45.0

COMPRESSORS		
Type (Number)		Hermetic Twin Rotary (1)
Motor Output	kW	6.2
PHYSICAL DATA		
Pipe Connection Size - Liquid (High Pressure)	in.	1/2 (Brazeing)
Pipe Connection Size - Gas (Low Pressure)	in.	7/8 (Brazeing)
Refrigerant		R-410A
Factory Charge††	lb	13.2
External Finish		Munsell 1Y8.5/0.5
Unit Width	in.	39.6
Unit Height	in.	66.5
Unit Depth	in.	31.1
Unit Net Weight	lb	521

LEGEND

EER	—	Energy Efficiency Ratio
COP	—	Coefficient of Performance
MCA	—	Minimum Circuit Amps
MOCP	—	Maximum Overcurrent Protection

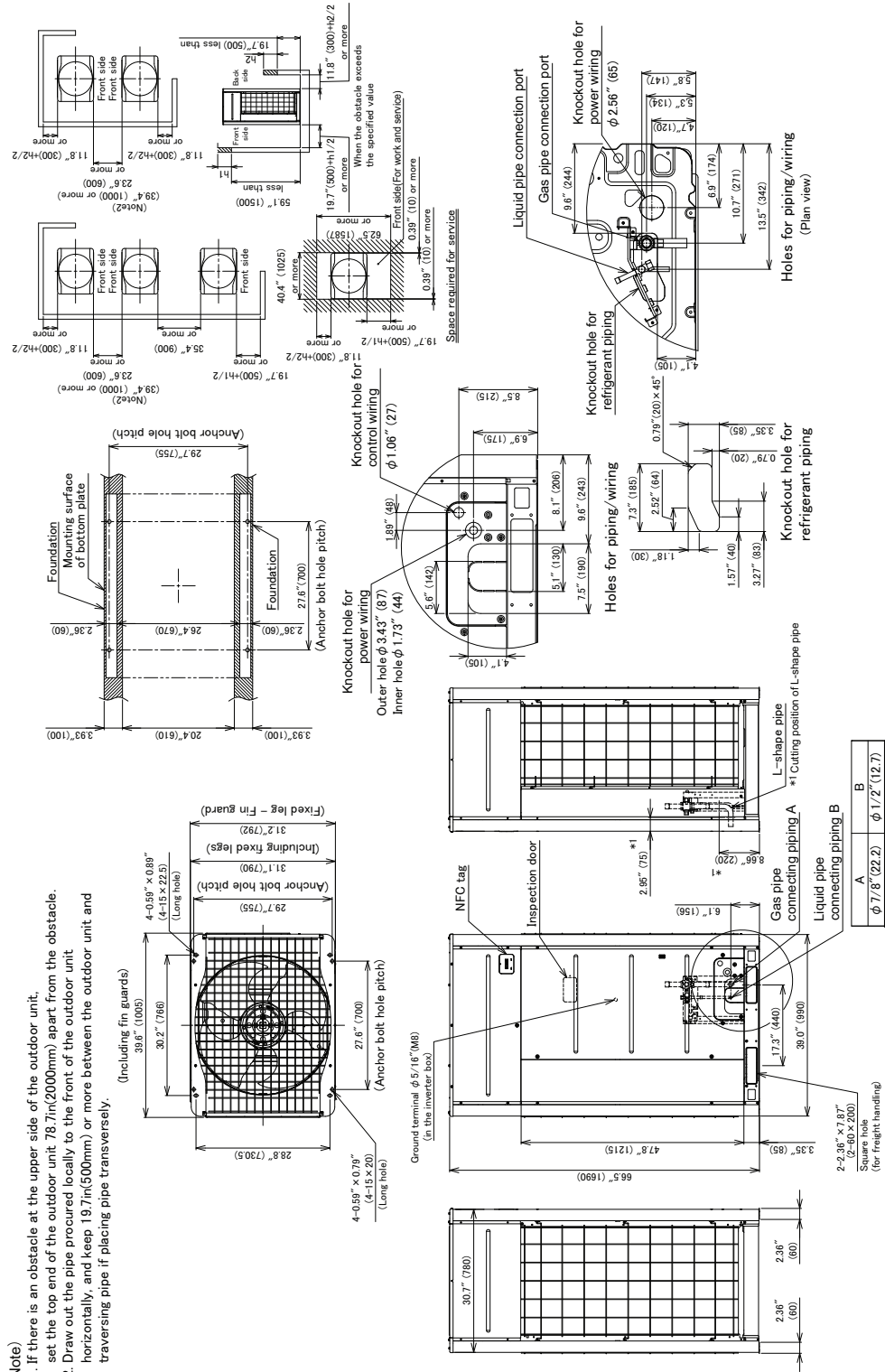
†Rated per AHRI (Air-Conditioning, Heating and Refrigeration Institute) 210/240 Standard.

Cooling: Indoor 80°F (27°C) db/67°F (20°C) wb; Outdoor 95°F (35°C) db

Heating: Indoor 70°F (21°C) db; Outdoor 47°F (8°C) db/43°F (6°C) wb

††Additional charge required.

OUTDOOR UNIT HEAT PUMP MMY-MUP0961HT9P-UL DIMENSIONAL DRAWING



(Unit:in(mm))

A230326

