

Residential & Light Commercial Heat Pump System

TOSHIBA
Carrier

Indoor Model: RAV-SM182BTP-UL

Outdoor Model: RAV-SP182AT2P-UL

Submittal Data

Job Name _____ Location _____
Tag _____



A220922

OUTDOOR UNIT STANDARD FEATURES

- Digital inverter compressor technology
- System can operate in cooling only mode with heating locked out
- Line lengths up to 164 ft
- Low-ambient cooling down to 5°F
- System diagnostics

OUTDOOR UNIT MODEL		RAV-SP182AT2P-UL
SYSTEM PERFORMANCE		
Nominal Cooling Capacity†	Btu/h	18,000
SEER		20.1
EER		11.5
Nominal Heating Capacity†	Btu/h	20,000
HSPF		10.6
COP		11.4
REFRIGERANT LINES		
Total Piping Length	ft	164
Vertical Lift	ft	98
Suction Line Size	in	1/2
Liquid Line Size	in	1/4
AMBIENT OPERATING RANGE		
Cooling DB Min ~ Max	F	5~115
Heating DB Min ~ Max	F	-13~59
REFRIGERANT		R410A
FACTORY CHARGE	lbs	3.8

AIRFLOW		
Cooling	CFM	1590
Heating	CFM	1590
SOUND PRESSURE LEVEL		
Cooling	db(A)	48
Heating	db(A)	52
ELECTRICAL		
Power Supply	V/Ph/Hz	208-230/1/60
Minimum Circuit Amps (MCA)	A	14
Recommended Fuse Size	A	15
Maximum Over Current Protection (MOCP)	A	25
PHYSICAL DATA		
Unit Width	in	30-3/4
Unit Height	in	21-3/4
Unit Length	in	11-3/8
Unit Weight - Net / Gross	lbs	99 / 106

Legend

db — Dry Bulb
SEER — Seasonal Energy Efficiency Ratio
HSPF — Heating Seasonal Performance Factor
wb — Wet Bulb

†Rated per AHRI (Air-Conditioning, Heating and Refrigeration Institute) 210/240 Standard.
Cooling: Indoor 80°F (27°C) db/67°F (20°C) wb; Outdoor 95°F (35°C) db
Heating: Indoor 70°F (21°C) db; Outdoor 47°F (8°C) db/43°F (6°C) wb



A221019

RAV-SM182BTP-UL STANDARD DUCT FEATURES

- R-410A refrigerant
- Six sizes from 12,000 to 48,000 Btu/h
- Optional fresh air intake
- Quiet operation (as low as 26 dBA)
- Standard condensate pump with 24.3 in. lift capacity
- Auto or manually set three fan speeds
- Rear return configurable for bottom return

INDOOR UNIT MODEL		RAV-SM182BTP-UL
PERFORMANCE		
Cooling Rated Capacity	Btu/h	18,000
Heating Rated Capacity	Btu/h	20,000
Fan Type (Qty)		Turbo (1)
External Static Pressure (ESP)	in.WG	0.12 (factory default) 0.6 (Max)
Airflow (H/M/L)	CFM	540/390/315
Sound Pressure (H/M/L)	dBA	34 / 30 / 26
ELECTRICAL		
Power Supply	V/Ph/Hz	From ODU
FILTER		
Type		Washable
Quantity		1
MERV Corresponding Value		5
Dimensions (H x W x D)	in.	10-5/8 x 27-5/8 x 5/8

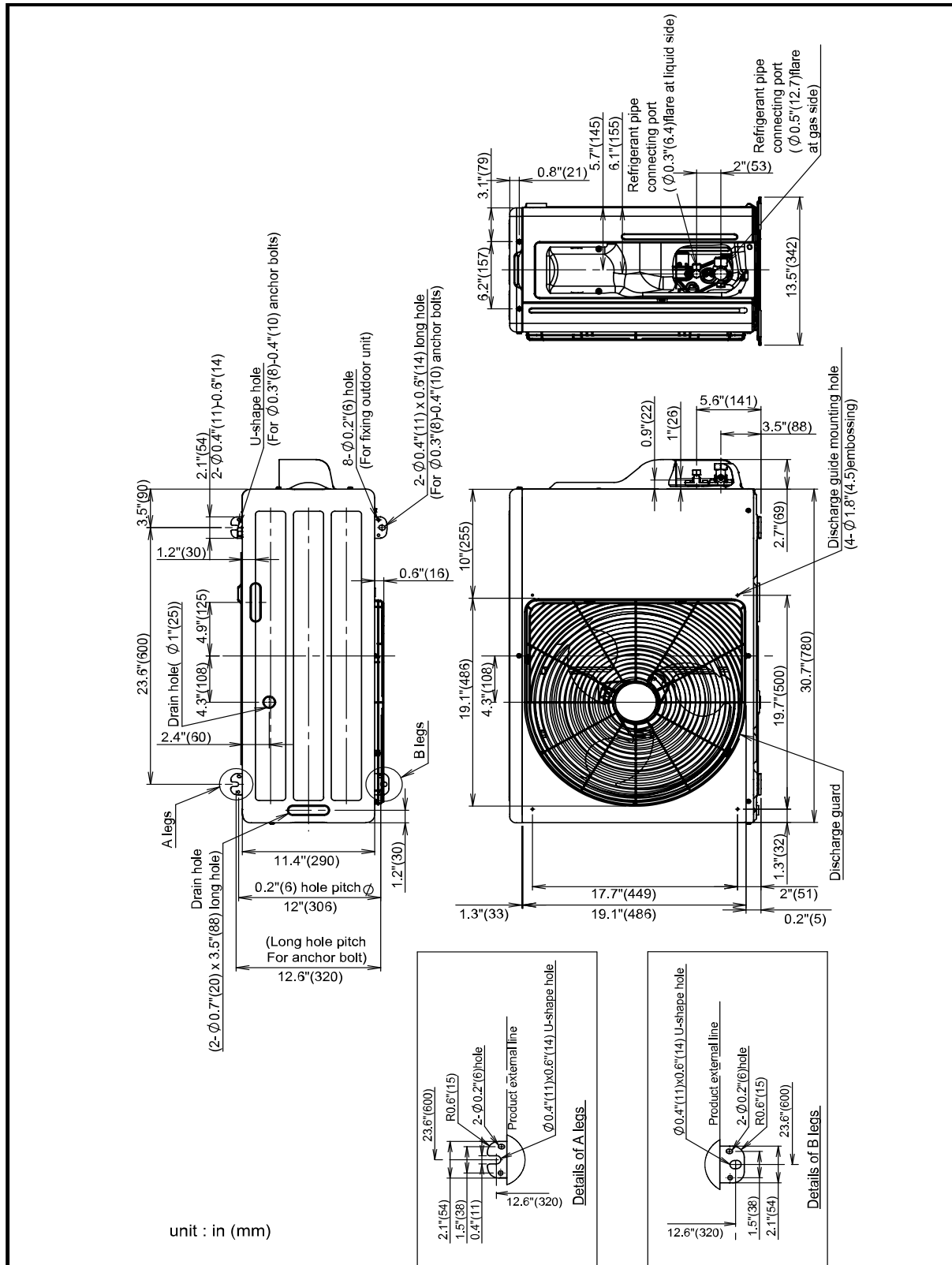
PHYSICAL DATA		
Pipe Connection Size - Liquid (High Pressure)	in	1/4 (Flare)
Pipe Connection Size - Gas (Low Pressure)	in	1/2 (Flare)
Condensate Drain Connection	in	1-1/4
External Finish		Zinc Hot Dipping Steel Plate
Unit Width	in	27-5/8
Unit Height	in	10-7/8
Unit Depth	in	29-5/8
Unit Net Weight	lb	53
MOTOR		
Motor Type		DC
Motor Watts	W	150

ACCESSORIES

- ☐ Wired Remote Controller (7-Day Programmable) RBC-AMS54E-UL
- ☐ Simple Wired Remote Controller RBC-AS41UL
- ☐ Stand-Alone Receiver with Wireless Remote Controller TCB-AX32UL
- ☐ Remote Sensor TCB-TC41LUL
- ☐ Wired Remote Controller RBC-AMT32UL
- ☐ Auxiliary OA Flange TCB-FF151US-UL
- ☐ Zoning Duct Flange TCB-SF56C6BP-UL

DIMENSIONAL DRAWING

OUTDOOR UNIT RAV-SP182AT2P-UL

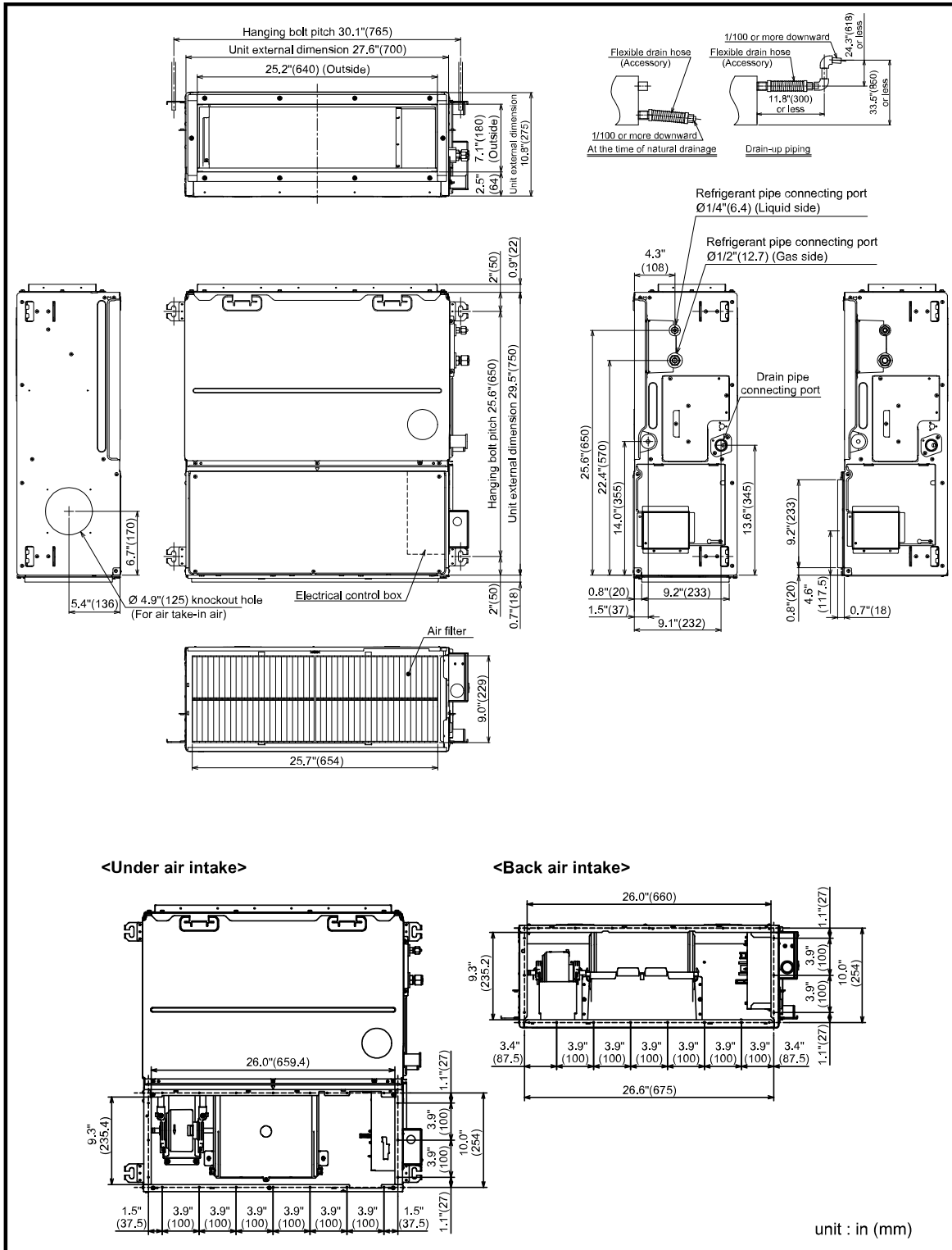


A220924



DIMENSIONAL DRAWING

INDOOR UNIT STANDARD DUCT RAV-SP182BTP-UL



A221020

