

## COMMERCIAL CONTROLS

### Building Automation Systems



i-Vu® Building Management



Plant Control and Optimization



i-Vu® Programmable Controllers



Sensors



Connect™ BACnet Thermostats

## CHILLERS

### Air-Cooled



AquaSnap® 30RC Scroll Chiller  
10 to 60 Tons (60 Hz)



AquaSnap® 30RC Scroll Chiller  
60 to 250 Tons (60 Hz)



AquaForce® 30XV Screw Chiller  
140 to 500 Tons (50 & 60 Hz)



AquaForce® 30XV Screw Chiller with Waterside Economizer – 09FC  
140 to 500 Tons (50 & 60 Hz)

## CHILLERS (CONTINUED)

### Water-Cooled



AquaEdge® 19DV Advanced Two-Stage Compression with Greenspeed® Intelligence  
350 to 1,150 Tons



AquaEdge® 19MV Advanced Two-Stage Compression with Greenspeed® Intelligence  
150 to 700 Tons



AquaEdge® 19XR(V) Constant or Variable-Speed Centrifugal Chillers Single-Stage  
200 to 550 Tons



AquaEdge® 19XR(V) Constant or Variable-Speed Centrifugal Chillers Two-Stage  
600 to 3,400 Tons



AquaEdge® 23XRV Variable-Speed Screw Chillers with Greenspeed® Intelligence  
175 to 300 Tons



AquaEdge® 23XRV Variable-Speed Screw Chillers with Greenspeed® Intelligence  
250 to 550 Tons



AquaForce® 30XW Screw Chillers  
150 to 400 Tons



AquaForce® 30HX Screw Chillers  
75 to 265 Tons



AquaSnap® 30MP Scroll Chillers  
16 to 71 Tons



AquaEdge® 17DA Open-Drive Centrifugal Chillers  
Motor or Steam Turbine Driven  
3,000 to 5,500 Tons

## AIR-HANDLING UNITS

### Central Station Air Handlers



Aero® 39M  
1,500 to 60,500 cfm



Aero® 39L  
1,800 to 15,000 cfm



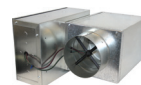
Aero® 39S  
400 to 8,500 cfm



Carrier Custom 39CC

## AIR TERMINALS

### Overhead



Axis™ 35E Single Duct VAV Terminals  
40 to 7,000 cfm



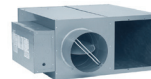
Axis™ 35J Retrofit Terminals  
40 to 3,700 cfm



Axis™ 35K Bypass Terminals  
110 to 4,400 cfm



Axis™ 35L,N Dual Duct VAV Terminals  
40 to 7,000 cfm



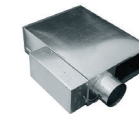
Axis™ 45K/N Series/Parallel Quiet Flow Fan-Powered Terminal Units for VAV Systems  
50 to 3,000 cfm



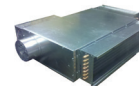
Axis™ 45J/M Series Parallel Standard Flow Fan-Powered Terminal Units for VAV Systems  
100 to 3,900 cfm

## AIR TERMINALS (CONTINUED)

### Overhead



Axis™ 45Q/R Series/Parallel Low-Profile Fan-Powered Terminal Units for VAV Systems  
170 to 1,970 cfm



Axis™ 45Q DOAS Terminals  
150 to 1,625 cfm

## FAN COILS



AirStream™ 42B Belt Drive  
600 to 4,000 cfm



AirStream™ 42C Horizontal  
200 to 1,200 cfm



AirStream™ 42V Vertical  
200 to 1,200 cfm



AirStream™ 42D Ducted  
600 to 2,000 cfm



AirStream™ 42S Stack  
300 to 2,000 cfm

### Hydronic Cassette Fan Coil Units



AirStream™ 42WKN Hydronic Cassette Fan Coil Units  
0.75 to 3 Tons

### Induction Chilled Water



ActivAIR™ 36IB Induction Beams  
70 to 1,285 cfm



WeatherMaster® 36S Induction Air Terminals  
20 to 130 cfm

### Unit Ventilators



AirStream™ 40UV, UH Unit Ventilators  
750 to 1,500 cfm

## SPLIT SYSTEMS

### Ductless Systems, Single Zone



MP High Wall Systems  
0.75 to 1 Ton

38MARB Heat Pumps  
0.75 to 3 Tons

40MAHB High Wall  
40MBCQ Cassette  
40MBDQ Ducted  
40MBFQ Floor Consoles

MH High Wall Systems  
0.75 to 2 Tons

### Ductless Systems, Multi-Zone



MGR Systems  
Up to 5 Zones  
1.5 to 4 Tons

### Ductless Systems, Light Commercial



RAV\*AT  
1.5 to 3.5 Tons

RAV\*KRT High Wall

RAV\*UT Cassette

RAV\*BT Ducted

RAV\*CT Underceiling

MBR Ducted Systems  
3 to 5 Tons



24AHA4 Cooling Only

25HHA Heat Pump  
1.5 to 5 Tons

MK\*B High Wall

MK\*C Cassette

MK\*F Underceiling

### Carrier Variable Refrigerant Flow Systems



38VMH-1P Heat Pumps  
3 to 5 Tons

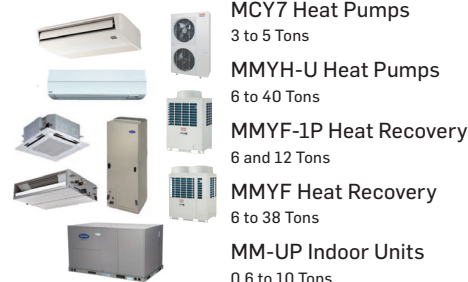
38VMH Heat Pumps  
6 to 36 Tons

38VMR Heat Recovery  
6 to 28 Tons

40VM Indoor Units  
0.6 to 8 Tons

## SPLIT SYSTEMS (CONTINUED)

### Toshiba Carrier Variable Refrigerant Flow Systems



MCY7 Heat Pumps  
3 to 5 Tons

MMYH-U Heat Pumps  
6 to 40 Tons

MMYF-1P Heat Recovery  
6 and 12 Tons

MMYF Heat Recovery  
6 to 38 Tons

MM-UP Indoor Units  
0.6 to 10 Tons

### Condensing Units, Air Cooled



Performance™ 24ACB  
1.5 to 5 Tons

Gemini® Select 38APD/S  
25 to 130 Tons

Gemini® 38AUZ  
6 to 20 Tons

Gemini® 38AUD  
6 to 25 Tons

Gemini® 40RUA/Q/S  
12.5 to 30 Tons

Gemini® 40RFA/Q/S  
6 to 10 Tons

### Heat Pump Systems



Gemini® 38AUQ  
6 to 20 Tons

### Condensers, Air Cooled



Outdoor Air-Cooled  
Condenser 09AZ  
90 to 200 Tons

Indoor Air-Cooled  
Condenser 09XC  
5 to 20 Tons

Gemini® Select 09DP  
18 to 130 Tons

## PACKAGED PRODUCTS

### Packaged Rooftop Units



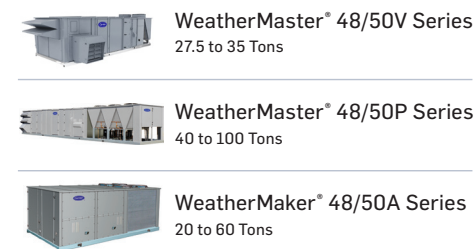
WeatherExpert® 48LC, 50LC  
6 to 23 Tons (VAV available)

WeatherExpert® with ecoblue™  
technology 48JC, 50JC  
3 to 5 Tons

WeatherMaster® with  
ecoblue™ technology  
48GC, 50GC 3 to 25 Tons  
50GQC 3 to 10 Tons

WeatherMaker® with  
ecoblue™ technology  
48FC, 50FC 3 to 27.5 Tons  
50FCQ 3 to 25 Tons

### Applied Rooftop Units



WeatherMaster® 48/50V Series  
27.5 to 35 Tons

WeatherMaster® 48/50P Series  
40 to 100 Tons

WeatherMaker® 48/50A Series  
20 to 60 Tons

### Small Packaged Products



Performance™ 50VG  
Packaged Air Conditioner

Performance™ 48VG  
Packaged AC/Gas Heat

Performance™ 50VR  
Packaged Heat Pump

Performance™ 48VR  
Packaged HYBRID HEAT®  
Dual Fuel System

Comfort™ 50VL  
Packaged Air Conditioner

Comfort™ 48VL  
Packaged AC/Gas Heat

Comfort™ 50VT  
Packaged Heat Pump

Comfort™ 48VT  
Packaged HYBRID HEAT®  
Dual Fuel System

## PACKAGED PRODUCTS (CONTINUED)

### Small Packaged Products (continued)



Comfort™ 50ZP  
Packaged Air Conditioner

Comfort™ 50ZH  
Packaged Heat Pump

### Indoor Self-Contained Systems



Omnizone™ 50XC  
Water-Cooled/Air-Cooled/  
Remote Air-Cooled  
5 to 20 Tons

Omnizone™ 50BV  
Water-Cooled  
18 to 60 Tons

## WATER SOURCE AND GEOTHERMAL HEAT PUMPS



Aquazone™ 50PCH, 50PCV  
Compact Units  
0.5 to 6 Tons

Aquazone™ 50PSH, 50PSV  
Horizontal/Vertical Upflow  
0.5 to 6 Tons

Aquazone™ 50PTH, 50PTV  
Horizontal/Vertical Upflow  
2 to 6 Tons

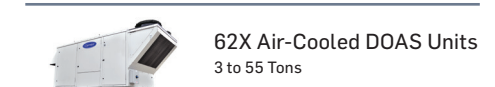
Aquazone™ 50PSW  
Water-to-Water Units  
3 to 35 Tons

Aquazone™ 50HQP  
Horizontal Large Capacity  
6 to 20 Tons

Aquazone™ 50VQP  
Vertical Large Capacity  
6 to 30 Tons

Aquazone™ 50PEC  
Console Units  
0.75 to 1.5 Tons

## DEDICATED OUTDOOR AIR PRODUCTS



62X Air-Cooled DOAS Units  
3 to 55 Tons