

# VRF Indoor Unit 45VMF015---3---4-Way Cassette



## Submittal Data

Job Name \_\_\_\_\_ Location \_\_\_\_\_  
Tag \_\_\_\_\_



### STANDARD FEATURES

- Delivers air in all four directions
- Knock out for OA opening
- Louver control (fixed or swing)
- Three fan speeds - high, medium, and low
- Built-in condensate lift mechanism
- Built in EXV (Electronic Expansion Valve) for installation ease

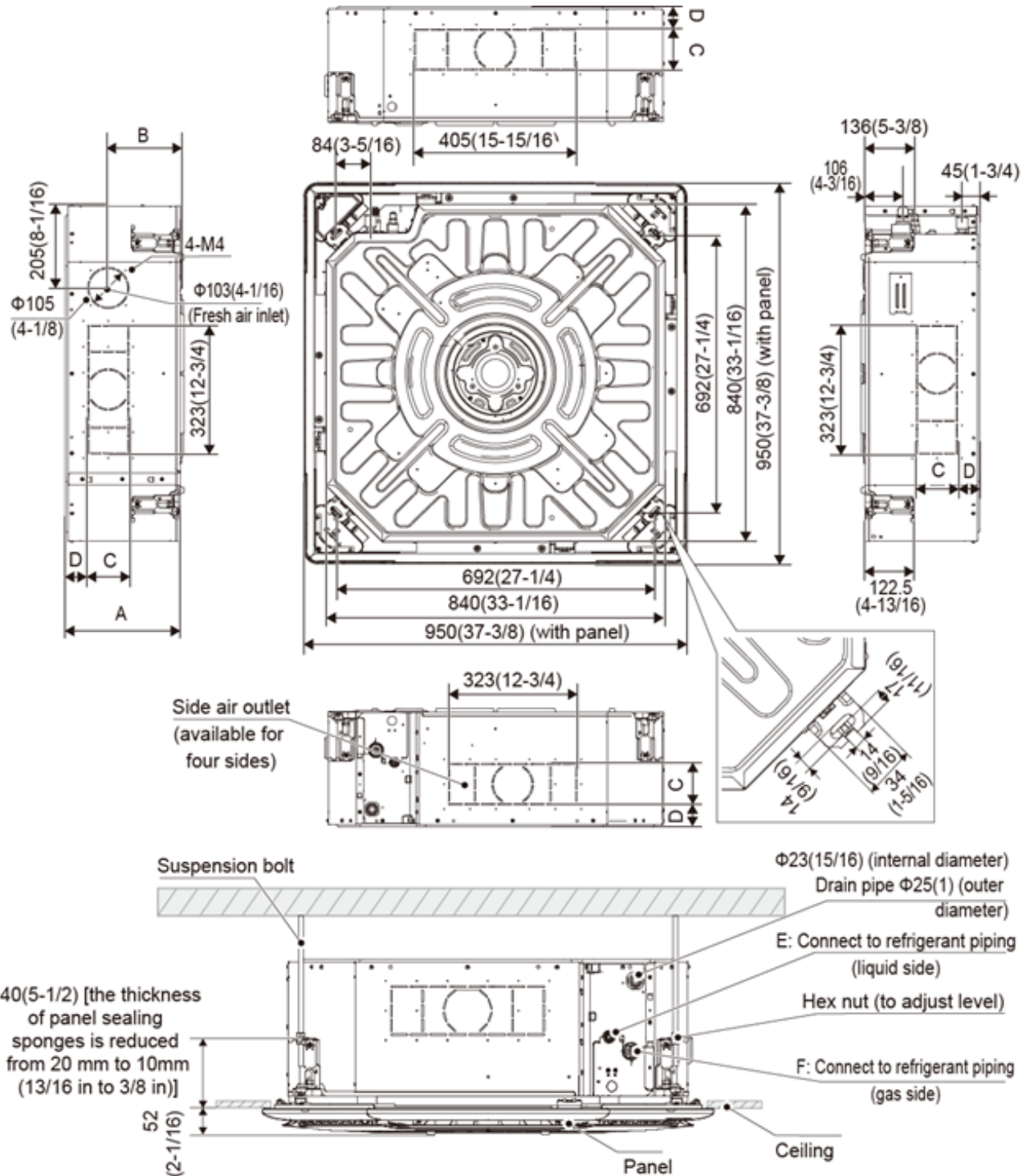
INDOOR UNIT MODEL		45VMF015---3
PERFORMANCE		
Total Cooling Rated Capacity	Btu/h	15,000
Total Heating Rated Capacity	Btu/h	17,000
Airflow (H / M / L)	CFM	693 / 600 / 507
Sound Pressure (H / M / L)	dBA	45 / 41 / 36
ELECTRICAL		
Power Supply	V/Ph/Hz	208-230/1/60
Indoor Fan Motor Rated Motor (Output)	W	125
Minimum Circuit Amps (MCA)	A	1.49
Maximum Overcurrent Protection	A	15.0
Motor Type		DC

PHYSICAL DATA		
Pipe Connection Size - Liquid	in.	1/4 (OD)
Pipe Connection Size - Suction	in.	1/2 (OD)
Pipe Connection Size - Drain	in.	1 (OD)
Refrigerant		R-454B
Unit Width	in.	33-1/8
Unit Height	in.	9-3/4
Unit Depth	in.	33-1/8
Unit Net Weight	lbs.	51.8
Panel Width	in.	37-3/8
Panel Height	in.	3
Panel Depth	in.	37-3/8
Panel Net Weight	lbs.	12.8

### ACCESSORIES

- ☐ Wireless Remote Controller 40VM900001
- ☐ Wired Remote Controller - Non-Prog. 40VM900002
- ☐ Grille 45VM001---

# DIMENSIONAL DRAWING INDOOR UNIT 4-WAY CASSETTE 45VMF015---3



Dimensions are shown in mm (in)

A	B	C	D	E	F
246 (9-11/16)	163 (4-3/8)	103 (4-1/16)	41.5 (1-5/8)	$\Phi 12.7 (1/2)$	$\Phi 6.35 (1/4)$

