

SMMSu VRF u-Series Outdoor Unit MMY-MUP120H1HT6P-UL—Heat Pump (Elite Heat)

TOSHIBA
Carrier

Submittal Data

Job Name _____ Location _____

Tag _____



A230327

SMMSu VRF Heat Pump (Elite Heat) Features

- Energy-efficient priority design
- Super-efficient heat exchanger
- Refrigerant cooling inverter system
- Intelligent VRF control
- Less refrigerant
- Space efficient design
- Configuration flexibility
- Wider Operating temperature range
- Comprehensive System construction solution
- Comprehensive Service solution

| | | |
|--------------------------------------|---------|---------------------|
| Header Unit Model | | MMY-MUP120H1HT6P-UL |
| PERFORMANCE | | |
| Nominal Cooling Capacity† | Btu/h | 120,000 |
| Nominal Heating Capacity† | Btu/h | 135,000 |
| Maximum number of indoor units | | 21 |
| Total Connected Indoor Unit Capacity | | 240 |
| COOLING EFFICIENCY† | | |
| EER (Non-Ducted) | Btu/Wh | 11.20 |
| Power Consumption (Non-Ducted) | kW | 9.49 |
| EER (Ducted) | Btu/Wh | 12.00 |
| Power Consumption (Ducted) | kW | 8.26 |
| HEATING EFFICIENCY† | | |
| COP (Non-Ducted) | Btu/Wh | 4.13 |
| Power Consumption (Non-Ducted) | kW | 8.90 |
| COP (Ducted) | Btu/Wh | 3.92 |
| Power Consumption (Ducted) | kW | 8.71 |
| FAN | | |
| Fan Type | | Propeller |
| Airflow | CFM | 7415 |
| Motor Output | kW | 0.38 x 2 |
| ELECTRICAL | | |
| Power Supply | V/Ph/Hz | 460/3/60 |
| MCA | A | 25.4 |
| MOCP | A | 30 |

| | | |
|---|----------------------------|-----------------|
| COMPRESSORS | | |
| Type (Number) | Hermetic Triple Rotary (1) | |
| Motor Output | kW | 7.67 |
| PHYSICAL DATA | | |
| Pipe Connection Size - Liquid (High Pressure) | in. | 5/8 (Brazing) |
| Pipe Connection Size - Gas (Low Pressure) | in. | 1-1/8 (Brazing) |
| Refrigerant | R-410A | |
| Factory Charge†† | lb | 19.8 |
| External Finish | Munsell 1Y8.5/0.5 | |
| Unit Width | in. | 51.4 |
| Unit Height | in. | 66.5 |
| Unit Depth | in. | 31.1 |
| Unit Net Weight | lb | 774 |

LEGEND

| | | |
|-------------|---|--------------------------------|
| EER | — | Energy Efficiency Ratio |
| COP | — | Coefficient of Performance |
| MCA | — | Minimum Circuit Amps |
| MOCP | — | Maximum Overcurrent Protection |

†Rated per AHRl (Air-Conditioning, Heating and Refrigeration Institute) 1230 Standard.

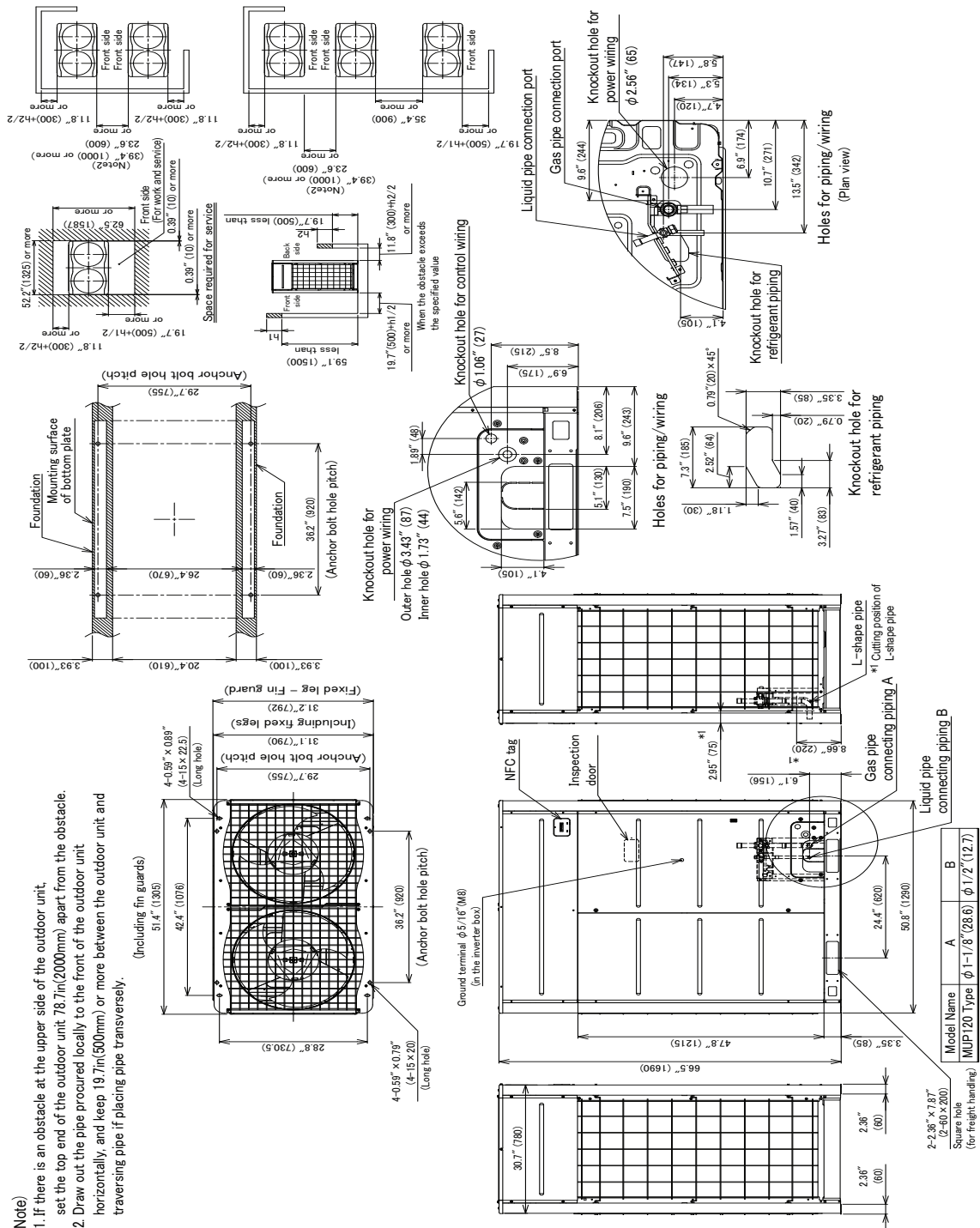
Cooling: Indoor 80°F (27°C) db/67°F (20°C) wb; Outdoor 95°F (35°C) db

Heating: Indoor 70°F (21°C) db; Outdoor 47°F (8°C) db/43°F (6°C) wb

††Additional charge required.

OUTDOOR UNIT HEAT PUMP (ELITE HEAT) MMY-MUP120H1HT6P-UL

DIMENSIONAL DRAWING



(Unit:in(mm))

A230328

