

# SMMSu VRF u-Series Outdoor Unit MMY-UP2881HT6P-UL—Heat Pump

# TOSHIBA Carrier

## Submittal Data

Job Name \_\_\_\_\_ Location \_\_\_\_\_

Tag \_\_\_\_\_



A230331

### SMMSu VRF Heat Pump Features

- Energy-efficient priority design
- Super-efficient heat exchanger
- Refrigerant cooling inverter system
- Intelligent VRF control
- Less refrigerant
- Space efficient design
- Configuration flexibility
- Wider Operating temperature range
- Comprehensive System construction solution
- Comprehensive Service solution

Header Unit Model		MMY-UP2881HT6P-UL
Outdoor Unit Model Name		MUP1441HT6P-UL + MUP1441HT6P-UL
<b>PERFORMANCE</b>		
Nominal Cooling Capacity†	Btu/h	288,000
Nominal Heating Capacity†	Btu/h	324,000
Maximum number of indoor units		51
Total Connected Indoor Unit Capacity		432
<b>COOLING EFFICIENCY†</b>		
EER (Non-Ducted)	Btu/Wh	10.6
Power Consumption (Non-Ducted)	kW	26.12
EER (Ducted)	Btu/Wh	12.4
Power Consumption (Ducted)	kW	22.34
<b>HEATING EFFICIENCY†</b>		
COP (Non-Ducted)	Btu/Wh	3.7
Power Consumption (Non-Ducted)	kW	24.33
COP (Ducted)	Btu/Wh	4.2
Power Consumption (Non-Ducted)	kW	21.68
<b>FAN</b>		
Fan Type		Propeller
Airflow	CFM	8650 + 8650
Motor Output	kW	0.43 x 2 + 0.43 x 2
<b>ELECTRICAL</b>		
Power Supply	V/Ph/Hz	460/3/60
MCA	A	24.6 + 24.6
MOCP	A	35.0 + 35.0

<b>COMPRESSORS</b>			
Type (Number)	Hermetic Twin Rotary (1)		
Motor Output	kW	9.70 + 9.70	
<b>PHYSICAL DATA</b>			
Pipe Connection Size - Liquid (High Pressure)	in.	5/8 (Braze)	5/8 (Braze)
Pipe Connection Size - Gas (Low Pressure)	in.	1-1/8 (Braze)	1-1/8 (Braze)
Refrigerant	R-410A		
Factory Charge††	lb	19.8 + 19.8	
External Finish	Munsell 1Y8.5/0.5		
Unit Width	in.	51.4 + 51.4	
Unit Height	in.	66.5 + 66.5	
Unit Depth	in.	31.1 + 31.1	
Unit Net Weight	lb	721 + 721	

### LEGEND

- EER** — Energy Efficiency Ratio
- COP** — Coefficient of Performance
- MCA** — Minimum Circuit Amps
- MOCP** — Maximum Overcurrent Protection

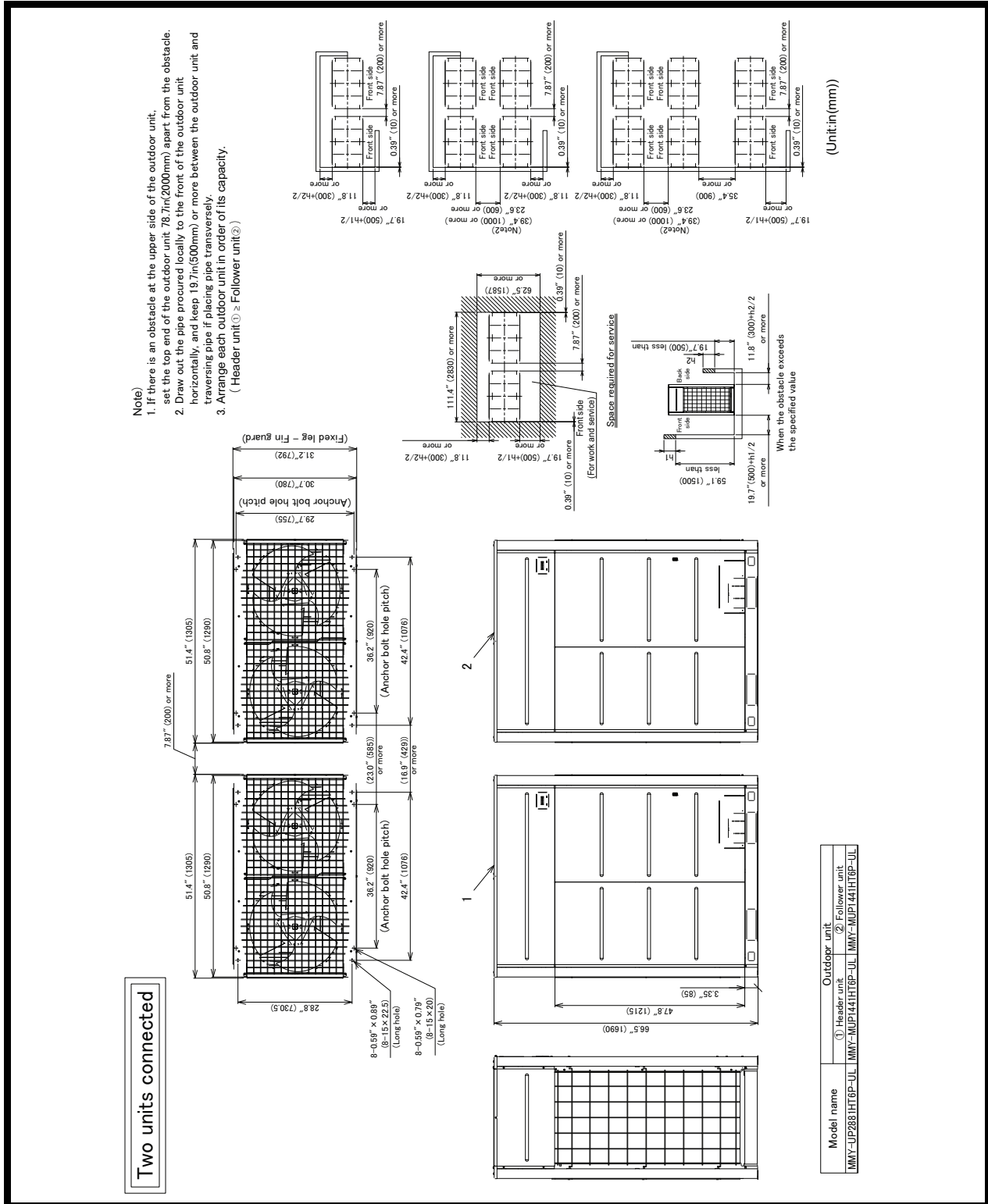
†Rated per AHRI (Air-Conditioning, Heating and Refrigeration Institute) 210/240 Standard.

Cooling: Indoor 80°F (27°C) db/67°F (20°C) wb; Outdoor 95°F (35°C) db

Heating: Indoor 70°F (21°C) db; Outdoor 47°F (8°C) db/43°F (6°C) wb

††Additional charge required.

# OUTDOOR UNIT HEAT PUMP MMY-UP2881HT6P-UL DIMENSIONAL DRAWING



Manufacturer reserves the right to discontinue, or change at any time, specifications or designs without notice and without incurring obligations.

A23034