

# SMMSu / SHRMu VRF Indoor Unit MMD-UB0071BHP-UL—Concealed Duct

**TOSHIBA**  
*Carrier*

## Submittal Data

Job Name \_\_\_\_\_ Location \_\_\_\_\_  
Tag \_\_\_\_\_



### SMMSu / SHRMu CONCEALED DUCT FEATURES

- R-454B Refrigerant
- Twelve sizes from 7,500 to 54,000 Btu/h
- Standard condensate pump with 24.3 in. lift capability
- Quiet operation, as low as 30 dBA
- Rear return configurable for bottom return
- Auto or manually set three fan speeds
- Five-year parts limited warranty

INDOOR UNIT MODEL		MMD-UB0071BHP-UL
PERFORMANCE		
Cooling Rated Capacity	Btu/h	7,500
Heating Rated Capacity	Btu/h	8,500
Fan Type (Qty)		Centrifugal (1)
External Static Pressure (ESP)	in.	0.4 (Factory default) 0.6 (Max)
Standard Airflow (H / M / L)	CFM	320 / 265 / 210
Sound Pressure (H / M / L)*	dBA	39 / 34 / 30
ELECTRICAL		
Power Supply	V/Ph/Hz	208-230/1/60
Power Consumption (Input)	kW	0.07
Full Load Amps (FLA)	A	0.73
Minimum Circuit Amps (MCA)	A	0.91
Maximum Overcurrent Protection (MOCP)	A	15.0

MOTOR		
Motor Type		DC
Motor Watts		150
PHYSICAL DATA		
Pipe Connection Size - Liquid	in.	1/4 (Flare)
Pipe Connection Size - Suction	in.	3/8 (Flare)
Pipe Connection Size - Drain	in.	VP25
Refrigerant		R-454B
External Finish		Zinc Hot Dipped Steel Plate
Unit Width	in.	27-5/8
Unit Height	in.	10-7/8
Unit Depth	in.	29-1/2
Net Weight	lb	56

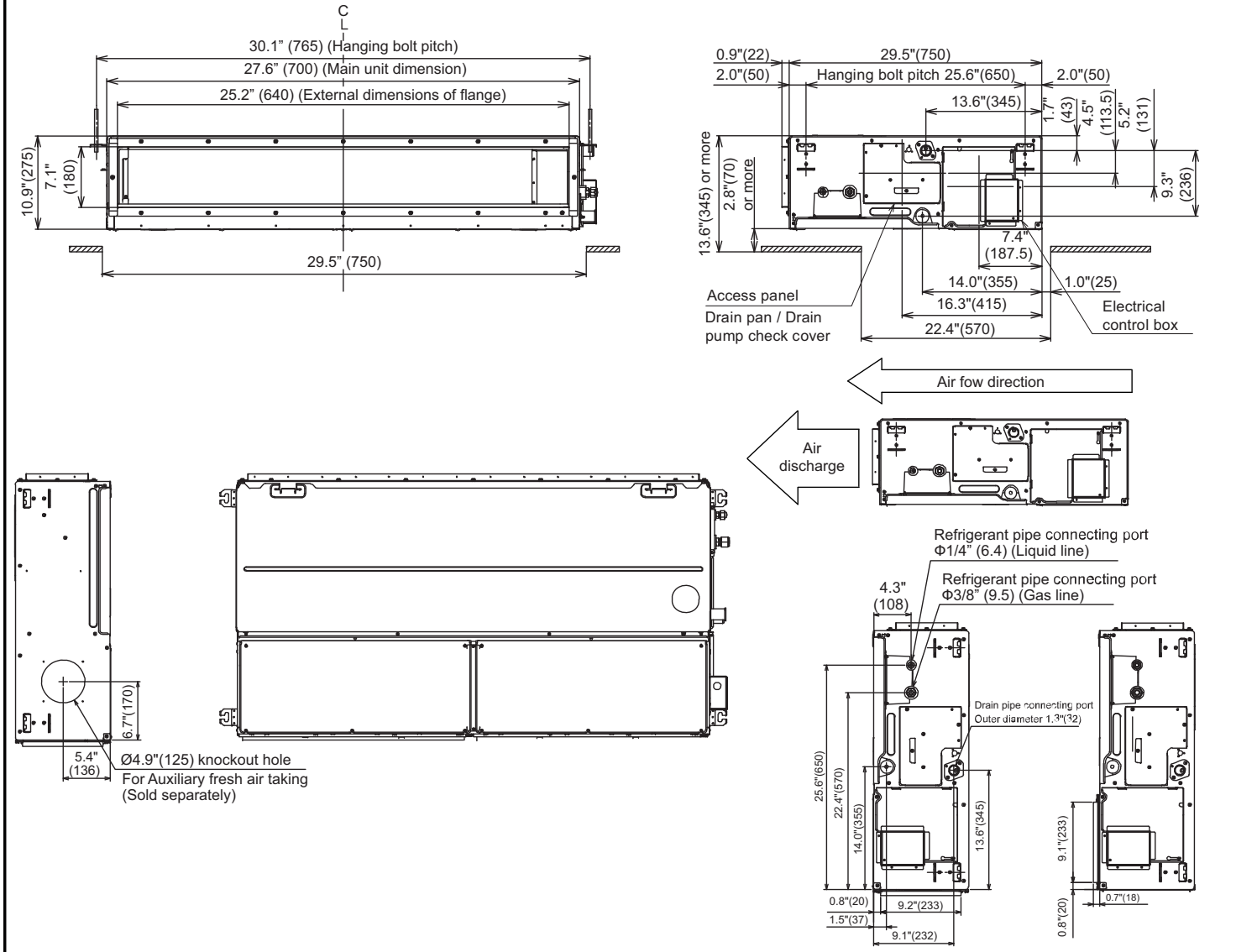
### ACCESSORIES

- ☐ Wired Remote Controller (7-Day Programmable) RBC-AWSU52-UL
- ☐ Simple Wired Remote Control RBC-ASCU11-UL
- ☐ Remote Sensor TCB-TC41U-UL
- ☐ Auxiliary OA Flange TCB-FF151US-UL
- ☐ Zoning Duct Flange TCB-SF56C6BP-UL
- ☐ Filter Kit TCB-FW561DP-UL

\* The actual values in an external operating environment are generally higher than the indicated values due to ambient noise.

**DIMENSIONAL DRAWING**  
**CONCEALED DUCT MMD-UB0071BHP-UL**

Unit : in(mm)



Edition Date: 02/25

Printed in U.S.A.

Form No: MMD-UB0071BHP-UL 01

Replaces: New

**Manufacturer reserves the right to discontinue, or change at any time, specifications or designs without notice and without incurring obligations.**