

# SMMSu VRF u-Series Outdoor Unit MMY-MUP0721HT6P-UL—Heat Pump

**TOSHIBA**  
*Carrier*

## Submittal Data

Job Name \_\_\_\_\_ Location \_\_\_\_\_

Tag \_\_\_\_\_



A230327

### SMMSu VRF Heat Pump Features

- Energy-efficient priority design
- Super-efficient heat exchanger
- Refrigerant cooling inverter system
- Intelligent VRF control
- Less refrigerant
- Space efficient design
- Configuration flexibility
- Wider Operating temperature range
- Comprehensive System construction solution
- Comprehensive Service solution

Header Unit Model		MMY-MUP0721HT6P-UL	
PERFORMANCE			
Nominal Cooling Capacity†	Btu/h	72,000	
Nominal Heating Capacity†	Btu/h	81,000	
Maximum Number of Indoor Units		12	
Total Connected Indoor Unit Capacity		144	
COOLING EFFICIENCY†			
EER (Non-Ducted)	Btu/Wh	15.7	
Power Consumption (Non-Ducted)	kW	4.38	
EER (Ducted)	Btu/Wh	14.5	
Power Consumption (Ducted)	kW	4.75	
HEATING EFFICIENCY†			
COP (Non-Ducted)	Btu/Wh	4.60	
Power Consumption (Non-Ducted)	kW	4.90	
COP (Ducted)		4.40	
Power Consumption (Ducted)	kW	5.10	
FAN			
Fan Type		Propeller	
Airflow	CFM	5650	
Motor Output	kW	0.43 x 1	
ELECTRICAL			
Power Supply	V/Ph/Hz	460/3/60	
MCA	A	17.4	
MOCP	A	20	

COMPRESSORS		
Type (Number)		Hermetic Twin Rotary (1)
Motor Output	kW	4.1
PHYSICAL DATA		
Pipe Connection Size - Liquid (High Pressure)	in.	1/2 (Brazing)
Pipe Connection Size - Gas (Low Pressure)	in.	3/4 (Brazing)
Refrigerant		R-410A
Factory Charge††	lb	13.2
External Finish	Munsell 1Y8.5/0.5	
Unit Width	in.	39.6
Unit Height	in.	66.5
Unit Depth	in.	31.1
Unit Net Weight	lb	533

### LEGEND

<b>EER</b>	—	Energy Efficiency Ratio
<b>COP</b>	—	Coefficient of Performance
<b>MCA</b>	—	Minimum Circuit Amps
<b>MOCP</b>	—	Maximum Overcurrent Protection

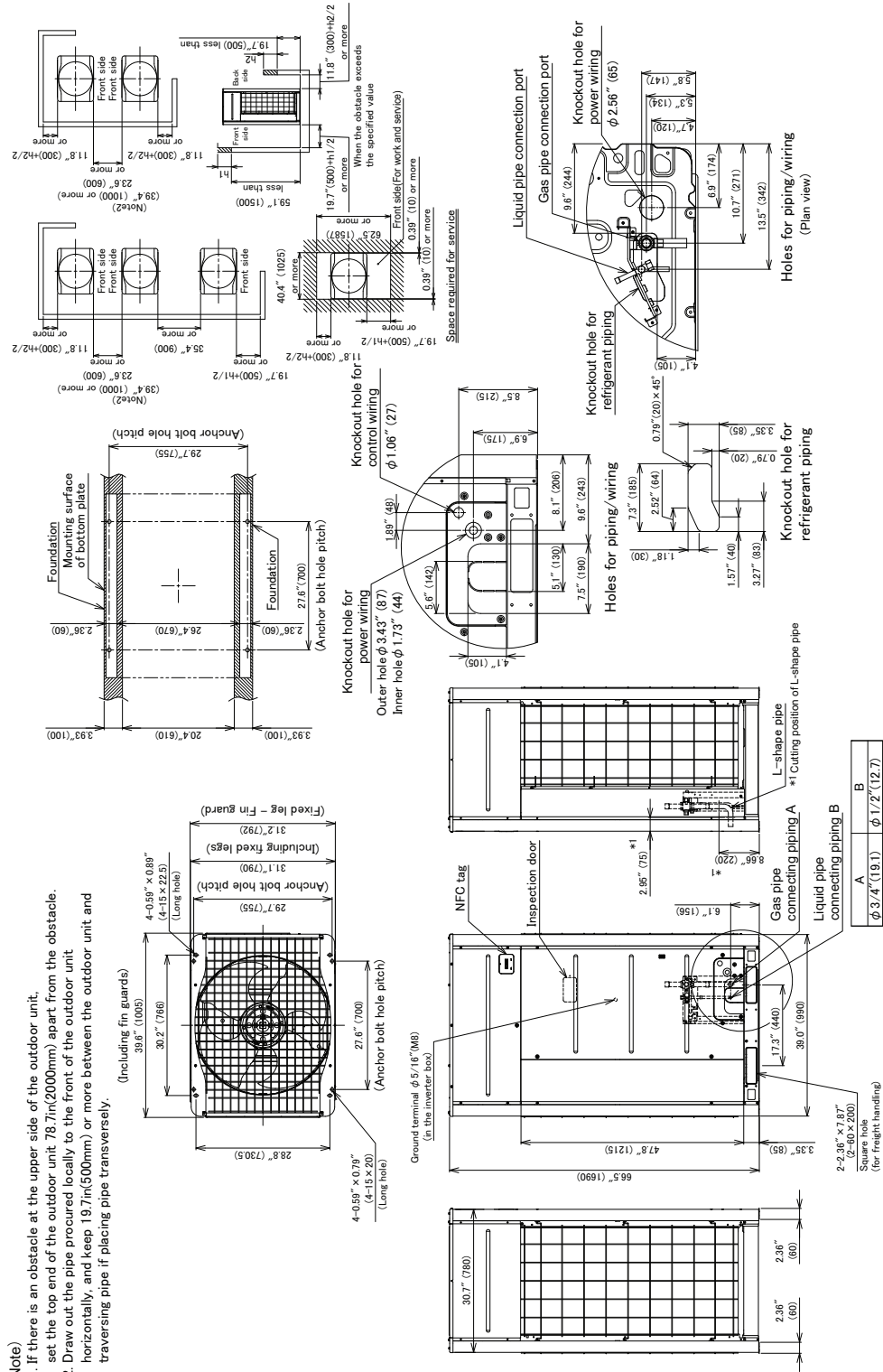
†Rated per AHRI (Air-Conditioning, Heating and Refrigeration Institute) 210/240 Standard.

Cooling: Indoor 80°F (27°C) db/67°F (20°C) wb; Outdoor 95°F (35°C) db

Heating: Indoor 70°F (21°C) db; Outdoor 47°F (8°C) db/43°F (6°C) wb

††Additional charge required.

## OUTDOOR UNIT HEAT PUMP MMY-MUP0721HT6P-UL DIMENSIONAL DRAWING



(Unit:in(mm))

