

SMMSu VRF u-Series Outdoor Unit MMY-UP1921HT9P-UL—Heat Pump

TOSHIBA
Carrier

Submittal Data

Job Name _____ Location _____

Tag _____



A230331

SMMSu VRF Heat Pump Features

- Energy-efficient priority design
- Super-efficient heat exchanger
- Refrigerant cooling inverter system
- Intelligent VRF control
- Less refrigerant
- Space efficient design
- Configuration flexibility
- Wider Operating temperature range
- Comprehensive System construction solution
- Comprehensive Service solution

Header Unit Model		MMY-UP1921HT9P-UL
Outdoor Unit Model Name		MUP0961HT9P-UL + MUP0961HT9P-UL
PERFORMANCE		
Nominal Cooling Capacity†	Btu/h	192,000
Nominal Heating Capacity†	Btu/h	216,000
Maximum number of indoor units		34
Total Connected Indoor Unit Capacity		288
COOLING EFFICIENCY†		
EER (Non-Ducted)	Btu/Wh	10.30
Power Consumption (Non-Ducted)	kW	17.40
EER (Ducted)	Btu/Wh	11.30
Power Consumption (Ducted)	kW	14.70
HEATING EFFICIENCY†		
COP (Non-Ducted)	Btu/Wh	4.26
Power Consumption (Non-Ducted)	kW	13.73
COP (Ducted)		4.00
Power Consumption (Ducted)	kW	13.51
FAN		
Fan Type		Propeller
Airflow (Ducted)	CFM	6180 + 6180
Motor Output	kW	0.59 x 1 + 0.59 x 1

ELECTRICAL			
Power Supply	V/Ph/Hz	230/3/60	
MCA	A	36.6 + 36.6	
MOCP	A	45.0 + 45.0	
COMPRESSORS			
Type (Number)	Hermetic Twin Rotary (1)		
Motor Output	kW	6.24 + 6.24	
PHYSICAL DATA			
Pipe Connection Size - Liquid (High Pressure)	in.	1/2 (Brazing)	1/2 (Brazing)
Pipe Connection Size - Gas (Low Pressure)	in.	7/8 (Brazing)	7/8 (Brazing)
Refrigerant		R-410A	
Factory Charge††	lb	13.2 + 13.2	
External Finish	Munsell 1Y8.5/0.5		
Unit Width	in.	39.6 + 39.6	
Unit Height	in.	66.5 + 66.5	
Unit Depth	in.	31.1 + 31.1	
Unit Net Weight	lb	521 + 521	

LEGEND

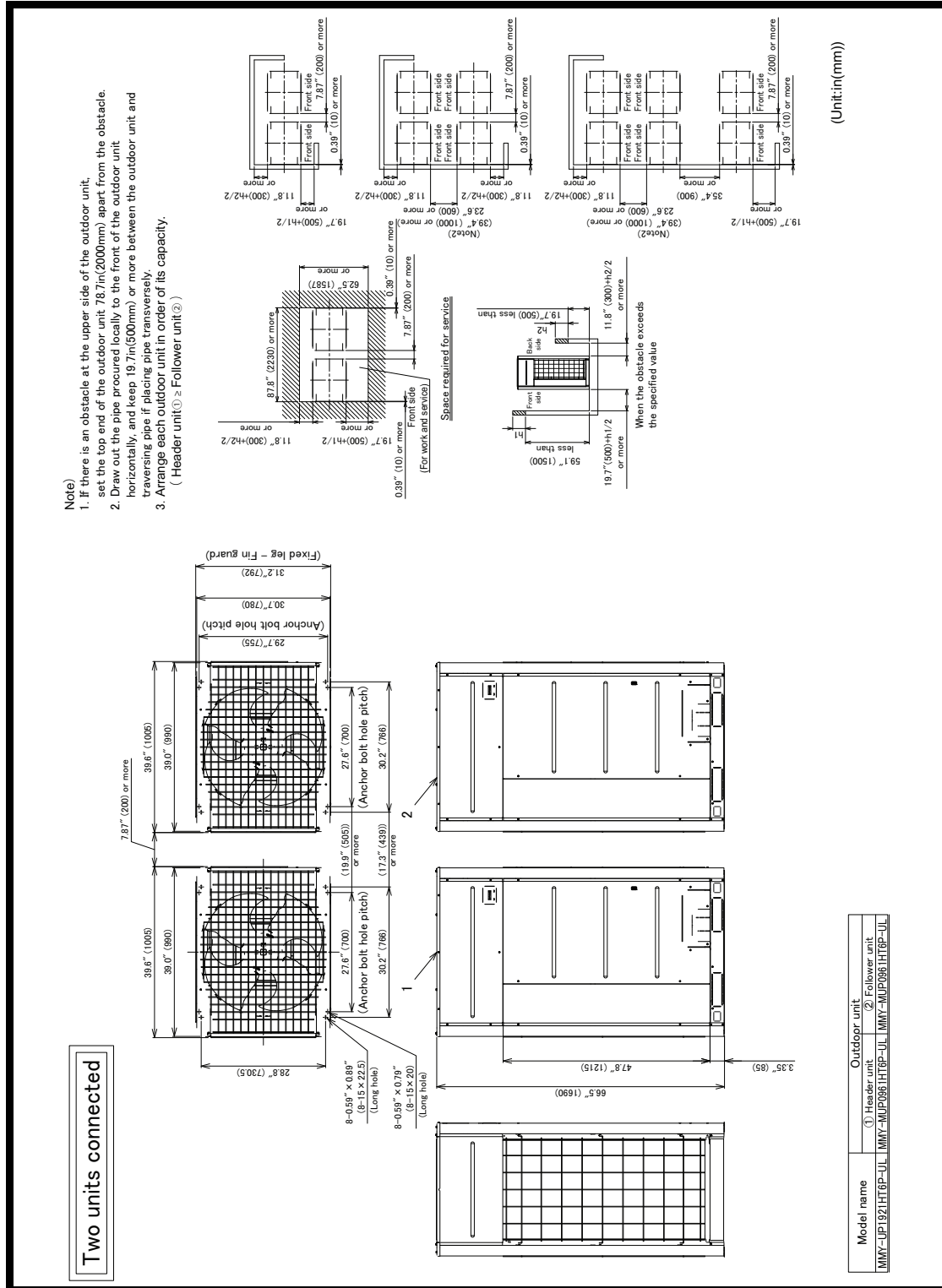
EER	—	Energy Efficiency Ratio
COP	—	Coefficient of Performance
MCA	—	Minimum Circuit Amps
MOCP	—	Maximum Overcurrent Protection

†Rated per AHRI (Air-Conditioning, Heating and Refrigeration Institute) 1230 Standard.

Cooling: Indoor 80°F (27°C) db/67°F (20°C) wb; Outdoor 95°F (35°C) db
Heating: Indoor 70°F (21°C) db; Outdoor 47°F (8°C) db/43°F (6°C) wb

††Additional charge required.

OUTDOOR UNIT HEAT PUMP MMY-UP1921HT9P-UL DIMENSIONAL DRAWING



A230333

