

SMMSu VRF u-Series Outdoor Unit MMY-UP240H1HT6P-UL—Heat Pump (Elite Heat)

TOSHIBA
Carrier

Submittal Data

Job Name _____ Location _____

Tag _____



A230331

SMMSu VRF Heat Pump (Elite Heat) Features

- Energy-efficient priority design
- Super-efficient heat exchanger
- Refrigerant cooling inverter system
- Intelligent VRF control
- Less refrigerant
- Space efficient design
- Configuration flexibility
- Wider Operating temperature range
- Comprehensive System construction solution
- Comprehensive Service solution

Header Unit Model		MMY-UP240H1HT6P-UL
Outdoor Unit Model Name		MUP120H1HT6P-UL + MUP120H1HT6P-UL
PERFORMANCE		
Nominal Cooling Capacity†	Btu/h	240,000
Nominal Heating Capacity†	Btu/h	270,000
Maximum number of indoor units		43
Total Connected Indoor Unit Capacity		360
COOLING EFFICIENCY†		
EER (Non-Ducted)	Btu/Wh	12.5
Power Consumption (Non-Ducted)	kW	18.29
EER (Ducted)	Btu/Wh	12.90
Power Consumption (Ducted)	kW	17.77
HEATING EFFICIENCY†		
COP (Non-Ducted)	Btu/Wh	4.0
Power Consumption (Non-Ducted)	kW	18.73
COP (Ducted)	Btu/Wh	4.4
Power Consumption (Ducted)	kW	17.08
FAN		
Fan Type		Propeller
Airflow	CFM	7415 + 7415
Motor Output	kW	0.38 x 2 + 0.38 x 2
ELECTRICAL		
Power Supply	V/Ph/Hz	460/3/60
MCA	A	25.4 + 25.4
MOCP	A	30.0 + 30.0

COMPRESSORS			
Type (Number)	Hermetic Twin Rotary (1)		
Motor Output	kW	7.7 + 7.7	
PHYSICAL DATA			
Pipe Connection Size - Liquid (High Pressure)	in.	1/2 (Brazeing)	1/2 (Brazeing)
Pipe Connection Size - Gas (Low Pressure)	in.	1-1/8 (Brazeing)	1-1/8 (Brazeing)
Refrigerant		R-410A	
Factory Charge††	lb	19.8 + 19.8	
External Finish	Munsell 1Y8.5/0.5		
Unit Width	in.	51.4 + 39.6	
Unit Height	in.	66.5 + 66.5	
Unit Depth	in.	31.1 + 31.1	
Unit Net Weight	lb	774 + 774	

LEGEND

EER	—	Energy Efficiency Ratio
COP	—	Coefficient of Performance
MCA	—	Minimum Circuit Amps
MOCP	—	Maximum Overcurrent Protection

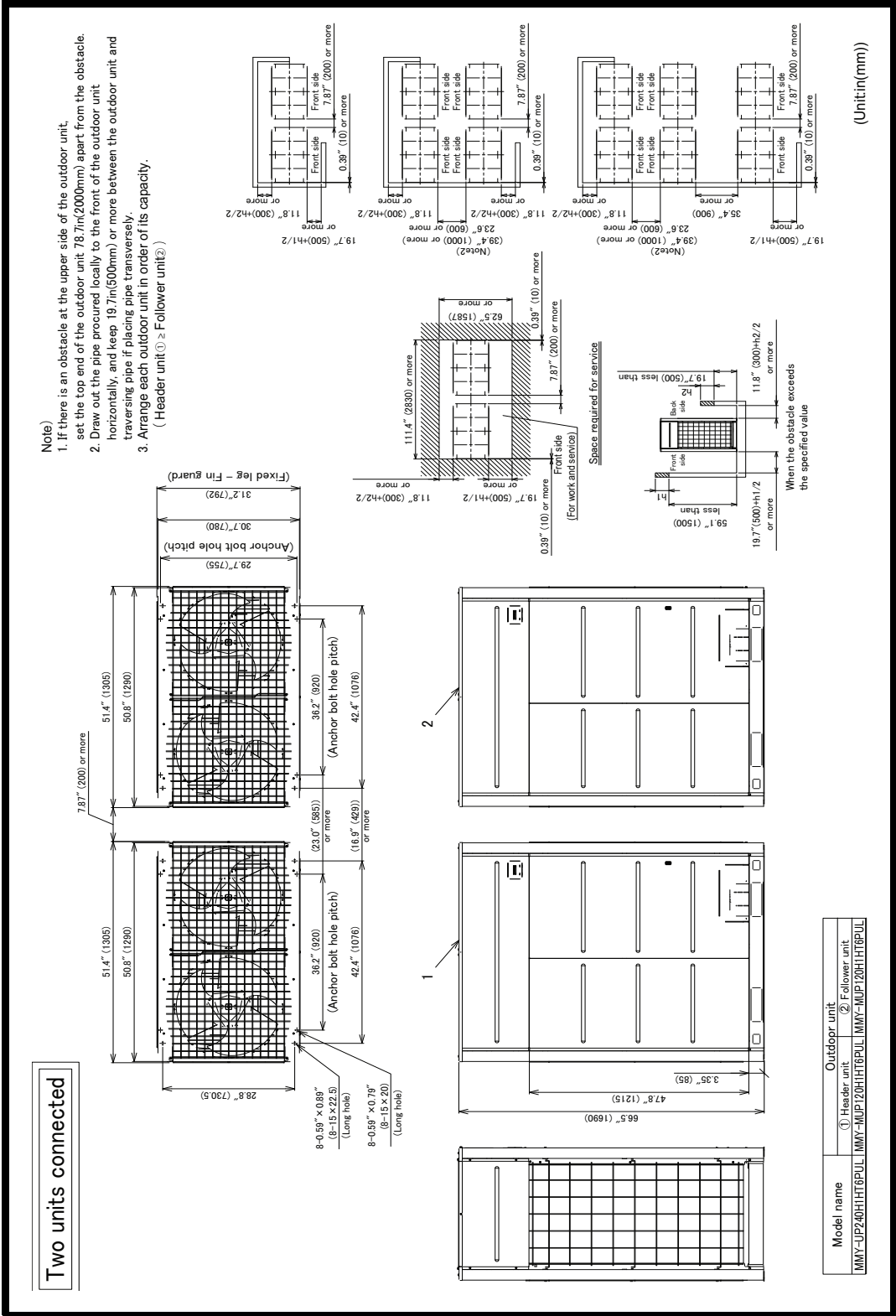
†Rated per AHRI (Air-Conditioning, Heating and Refrigeration Institute) 210/240 Standard.

Cooling: Indoor 80°F (27°C) db/67°F (20°C) wb; Outdoor 95°F (35°C) db
Heating: Indoor 70°F (21°C) db; Outdoor 47°F (8°C) db/43°F (6°C) wb

††Additional charge required.

OUTDOOR UNIT HEAT PUMP (ELITE HEAT) MMY-UP240H1HT6P-UL

DIMENSIONAL DRAWING



A230332

