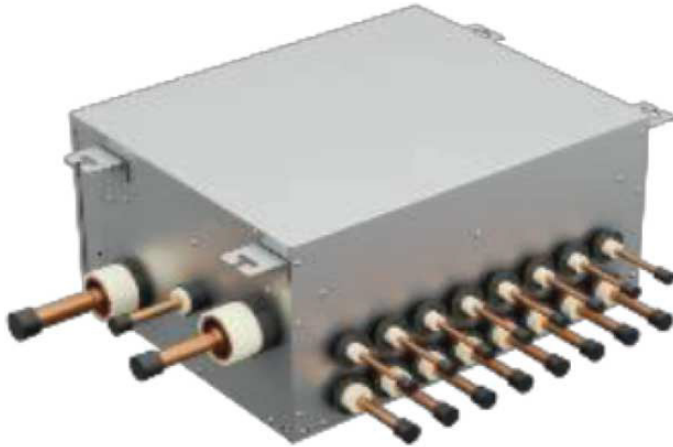


# SHRMe RBM-Y0611FU8PUL–Multiport Flow

**TOSHIBA**  
*Carrier*

## Submittal Data

Job Name \_\_\_\_\_ Location \_\_\_\_\_  
Tag \_\_\_\_\_



### Multiport Flow Selector Features

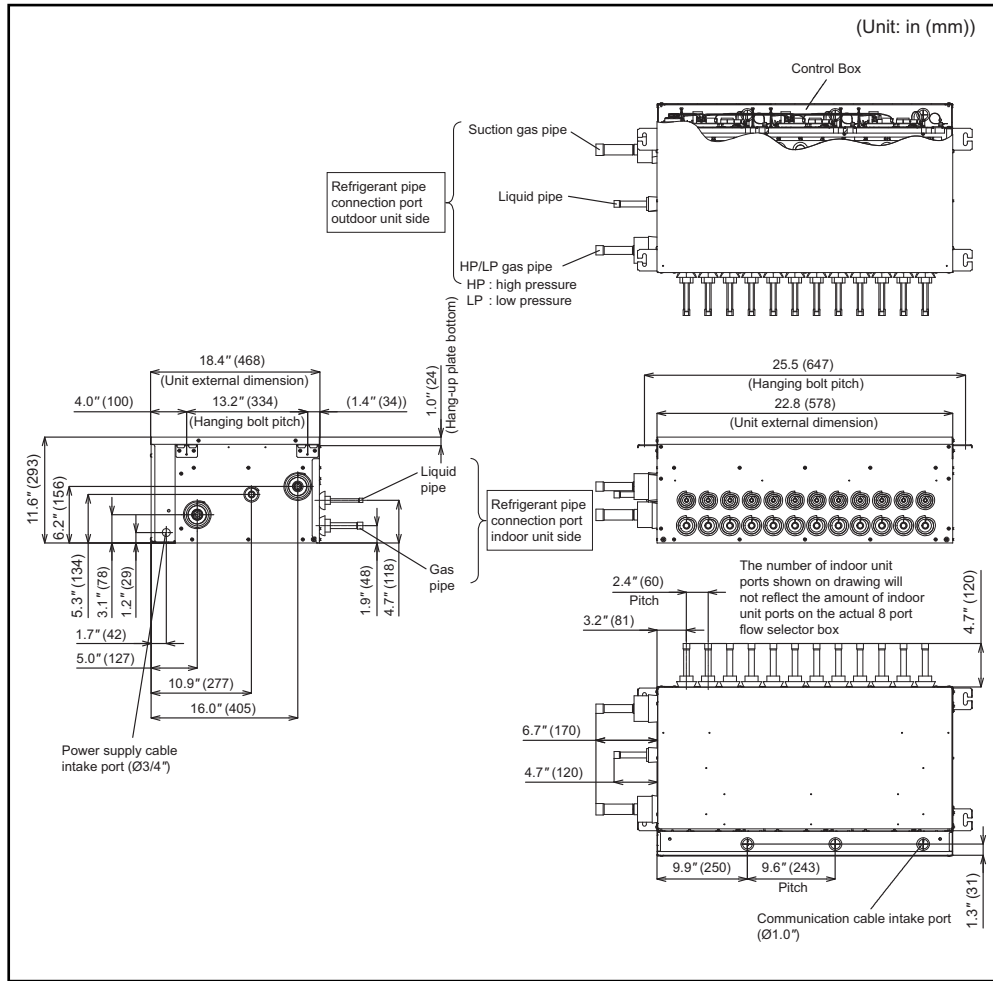
- Maximum piping length between the indoor unit and the FS box is 115 ft.
- Multiple indoor units can be connected to one box

|  |                         |                    |
|--|-------------------------|--------------------|
| MODEL NAME                                   | RBM-Y0611FU8PUL         |                    |
| POWER SUPPLY                                 | 208-230/1/60            |                    |
| MCA  | A                       | 0.75               |
| MOCP   | A                       | 15                 |
| Connectible indoor unit capacity/port        | kBtu/h                  | 1 branch: below 61 |
| DIMENSIONS                                   | Height (in)             | 11.5               |
|  | Width (in)              | 22.8               |
|  | Depth (in)              | 18.4               |
| TOTAL WEIGHT                                 | lbs                     | 77                 |
| Connecting Port Diameter (Indoor Unit Side)  | Liquid Side (in)        | 3/8                |
|  | Gas Side (in)           | 5/8                |
| Connecting Port Diameter (Outdoor Unit Side) | Liquid Side (in)        | 5/8                |
|  | Discharge Gas Side (in) | 7/8                |
|  | Suction Gas Side (in)   | 1-1/8              |
| Connection                                   | Braze                   |                    |

### LEGEND

**MCA** — Minimum Circuit Amps  
**MOCP** — Maximum Over Current Protection

## MULTIPORT FLOW SELECTOR (RBM-Y0611FU8PUL) DIMENSIONS



## MULTIPORT FLOW SELECTOR (RBM-Y0611FU8PUL) CLEARANCES

