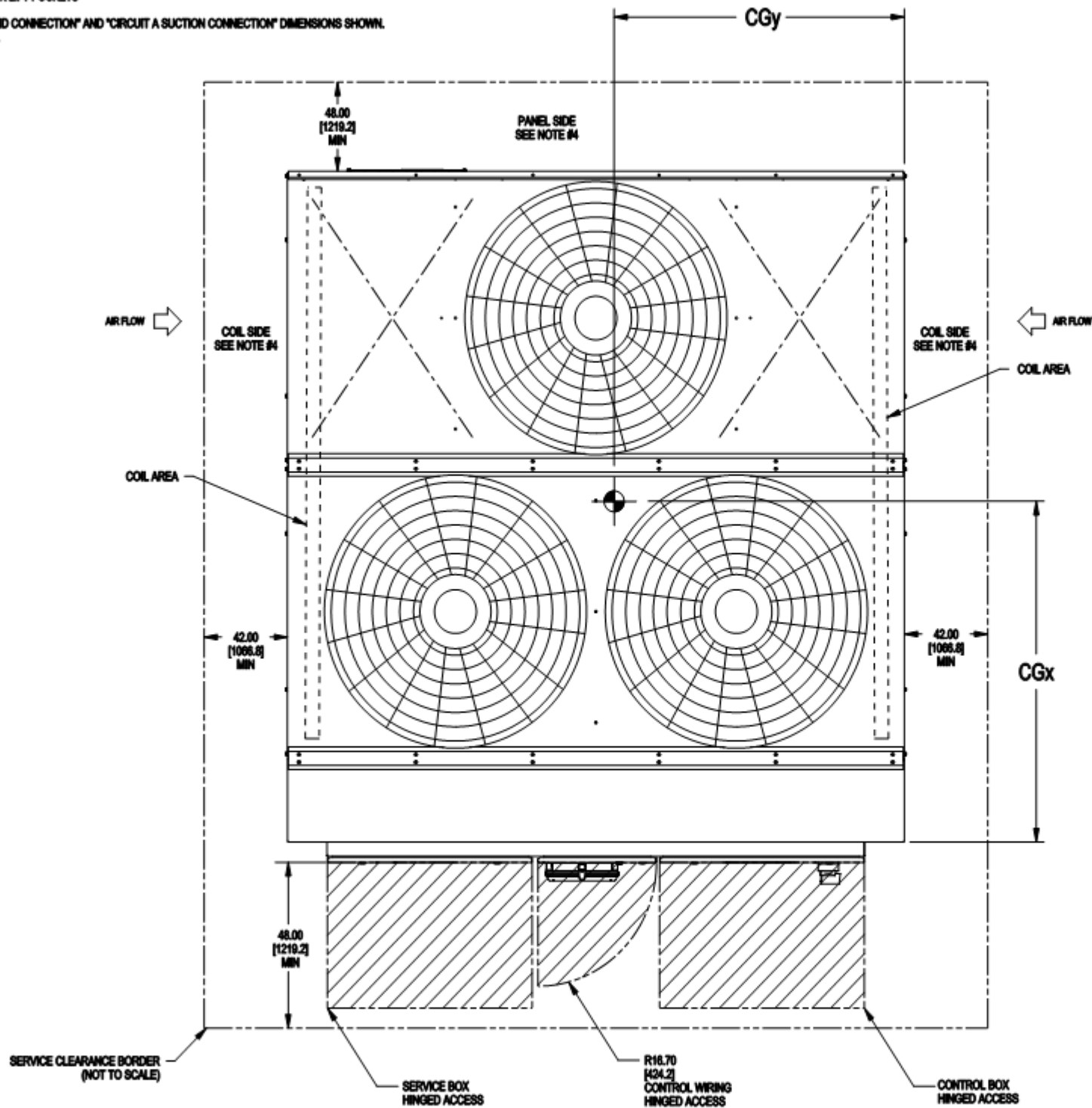


- NOTES:
1. BE SURE TO USE A WET RAG AND REMOVE ALL VALVE CORES BEFORE BRAZING FIELD PIPING.
 2. TEMPERATURE RELIEF DEVICES LOCATED ON LIQUID LINE AND HAVE 3/8" SAE FLARE CONNECTION.
DO NOT CAP OR OTHERWISE OBSTRUCT THE TEMPERATURE/PRESSURE RELIEF.
 3. ø 7/8" [22.2] PILOT HOLE PROVIDED FOR LOCATING FIELD POWER WIRING. ACTUAL HOLE REQUIRED DEPENDS ON FIELD WIRE SIZING.
 4. ø 1/2" [13.3] HOLE USED FOR MOUNTING UNIT.
 5. UNIT MUST HAVE AIRFLOW SERVICE CLEARANCES AS FOLLOWS:
TOP - DO NOT RESTRICT.
COIL SIDE - 42" [1067] FROM SOLID SURFACE.
PANEL SIDE - 48" [1219] PER NEC.
 6. CARRIER DOES NOT RECOMMEND INSTALLATION IN A PIT.
 7. UNIT CAN BE HANDLED USING THE FORK TRUCK LIFT POCKETS
 8. DIMENSIONS ARE IN "INCH [MM]"
 9. FOR 38RCS PIPING, REFER TO "CIRCUIT A LIQUID CONNECTION" AND "CIRCUIT A SUCTION CONNECTION" DIMENSIONS SHOWN.
 10. DRAWING SHOWN WITH GREENSPEED OPTION.



PLAN VIEW

CENTER OF GRAVITY INCH [MM]			MACHINE OPTIONS			SERVICE VALVE CONNECTIONS	
CGx	CGy	CGz	GREENSPEED	COIL TYPE	DISCONNECT	SUCTION	LIQUID
35.2 [895]	44.3 [1128]	30.7 [781]	✓	CU-AL	✓	2-1/8" [41]	7/8" [22]



P.O. BOX 4906, SYRACUSE, N.Y. 13221

JOB NAME:

BUYER:

SALES ENG.:

MODEL NO.:

JOB NO.:

P.O. NO.:

PREPARED BY:

ELECTRICAL
CHARACTERISTICS:

JOBSITE LOCATION:
Job_Location 1
Job_Location 2

SALES OFFICE:

REFRIGERANT NO.:

NOTES:
Notes_1
Notes_2

38RC 050T STD
MACHINE ASSEMBLY
PLAN VIEW

DATE:

REVISION:

THIS DOCUMENT IS THE PRO-
PERTY OF CARRIER CORP.
AND IS DELIVERED UPON THE
EXPRESS CONDITION THAT THE
CONTENTS WILL NOT BE DIS-
CLOSED OR USED WITHOUT
CARRIER CORP. WRITTEN
CONSENT.

SUBMISSION OF THESE DWG'S.
OR DOCUMENTS DOES NOT
CONSTITUTE PART PERFORM-
ANCE OR ACCEPTANCE OF
CONTRACT.

CARRIER DWG # 38RC-050-STD-P

REV. - SHT 01 OF 01

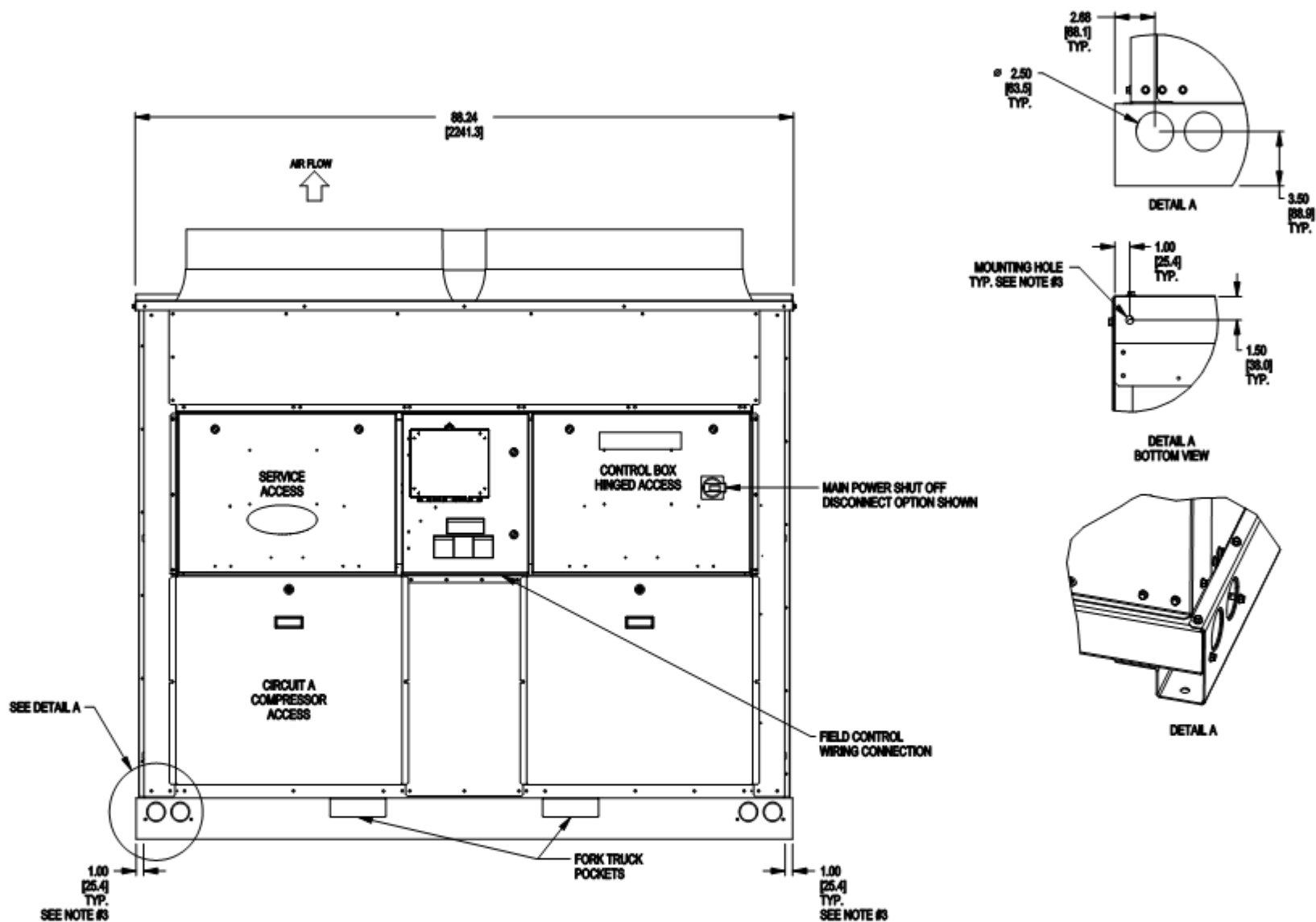
DATE: 08/05/2024

SUPERSEDES DWG. DATED:

38RC

SHT 01 OF 04

- NOTES:
1. BE SURE TO USE A WET RAG AND REMOVE ALL VALVE CORES BEFORE BRAZING FIELD PIPING.
 2. TEMPERATURE RELIEF DEVICES LOCATED ON LIQUID LINE AND HAVE 3/8" SAE FLARE CONNECTION.
DO NOT CAP OR OTHERWISE OBSTRUCT THE TEMPERATURE/PRESSURE RELIEF.
 3. 7/8" [22.2] PILOT HOLE PROVIDED FOR LOCATING FIELD POWER WIRING. ACTUAL HOLE REQUIRED DEPENDS ON FIELD WIRE SIZING.
 4. 1/2" [12.7] HOLE USED FOR MOUNTING UNIT.
 5. UNIT MUST HAVE AIRFLOW SERVICE CLEARANCES AS FOLLOWS:
TOP - DO NOT RESTRICT.
COIL SIDE - 42" [1067] FROM SOLID SURFACE.
PANEL SIDE - 48" [1219] PER NEC.
 6. CARRIER DOES NOT RECOMMEND INSTALLATION IN A PIT.
 7. UNIT CAN BE HANDLED USING THE FORK TRUCK LIFT POCKETS
 8. DIMENSIONS ARE IN "INCH [MM]"
 9. FOR 38RCS PIPING, REFER TO "CIRCUIT A LIQUID CONNECTION" AND "CIRCUIT A SUCTION CONNECTION" DIMENSIONS SHOWN.
 10. DRAWING SHOWN WITH GREENSPEED OPTION.



FRONT VIEW

CENTER OF GRAVITY INCH [MM]			MACHINE OPTIONS			SERVICE VALVE CONNECTIONS	
CGx	CGy	CGz	GREENSPEED	COIL TYPE	DISCONNECT	SUCTION	LIQUID
35.2 [895]	44.3 [1126]	30.7 [781]	✓	CU-AL	✓	2-1/8" [41]	7/8" [22]



JOB NAME:

BUYER:

SALES ENG.:

MODEL NO.:

JOB NO.:

P.O. NO.:

PREPARED BY:

ELECTRICAL
CHARACTERISTICS:

JOBSITE LOCATION:
Job_Location 1
Job_Location 2

SALES OFFICE:

REFRIGERANT NO.:

NOTES:
Notes_1
Notes_2

38RC 050T STD
MACHINE ASSEMBLY
FRONT VIEW

DATE:

REVISION:

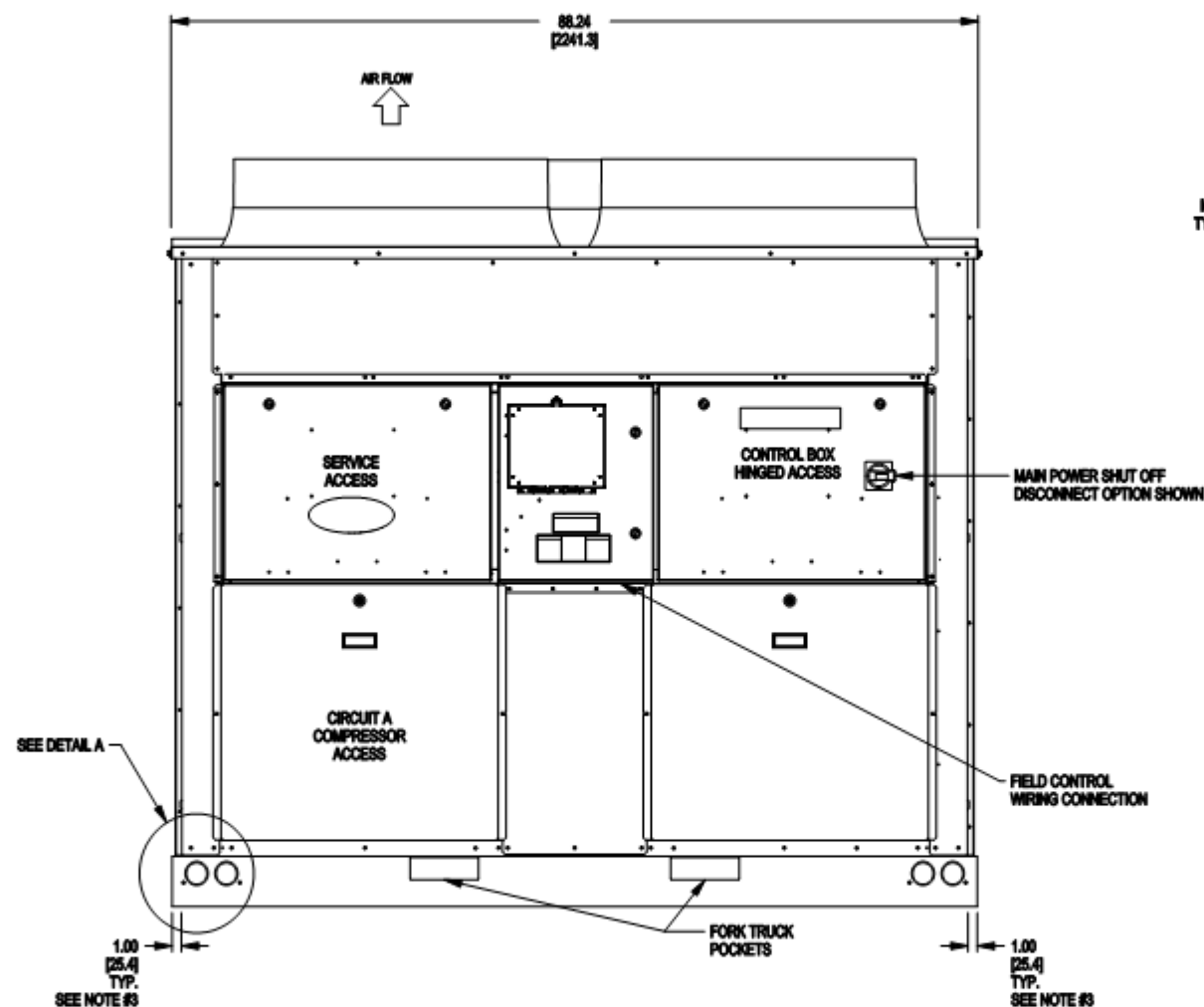
THIS DOCUMENT IS THE PROPERTY OF CARRIER CORP. AND IS DELIVERED UPON THE EXPRESS CONDITION THAT THE CONTENTS WILL NOT BE DISCLOSED OR USED WITHOUT CARRIER CORP. WRITTEN CONSENT.

SUBMISSION OF THESE DWG'S. OR DOCUMENTS DOES NOT CONSTITUTE PART PERFORMANCE OR ACCEPTANCE OF CONTRACT.

CARRIER DWG # 38RC-050-STD-F
REV. - SHT 01 OF 01
DATE: 08/05/2024
SUPERSEDES DWG. DATED: -

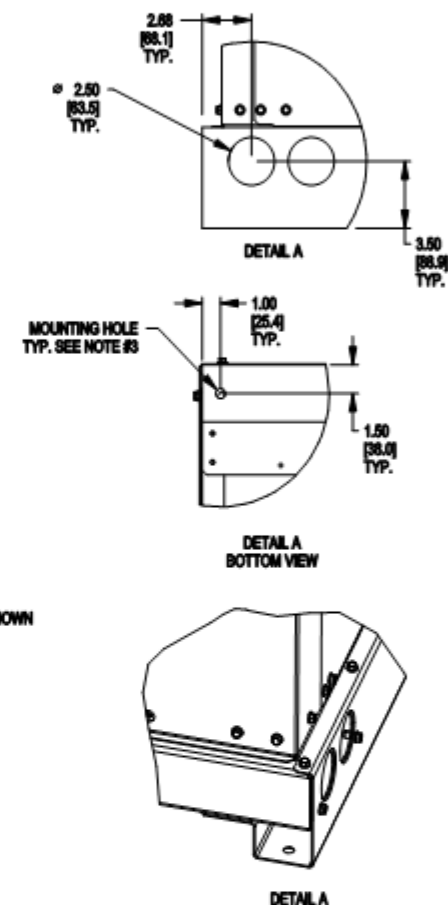
38RC
SHT 02 OF 04

- NOTES:
1. BE SURE TO USE A WET RAG AND REMOVE ALL VALVE CORES BEFORE BRAZING FIELD PIPING.
 2. TEMPERATURE RELIEF DEVICES LOCATED ON LIQUID LINE AND HAVE 3/8" SAE FLARE CONNECTION. DO NOT CAP OR OTHERWISE OBSTRUCT THE TEMPERATURE/PRESSURE RELIEF.
 3. # 7/8" [22.2] PILOT HOLE PROVIDED FOR LOCATING FIELD POWER WIRING. ACTUAL HOLE REQUIRED DEPENDS ON FIELD WIRE SIZING.
 4. # 1/2" [12.7] HOLE USED FOR MOUNTING UNIT.
 5. UNIT MUST HAVE AIRFLOW SERVICE CLEARANCES AS FOLLOWS:
TOP - DO NOT RESTRICT.
COIL SIDE - 42" [1067] FROM SOLID SURFACE.
PANEL SIDE - 48" [1219] PER NEC.
 6. CARRIER DOES NOT RECOMMEND INSTALLATION IN A PIT.
 7. UNIT CAN BE HANDLED USING THE FORK TRUCK LIFT POCKETS
 8. DIMENSIONS ARE IN "INCH [MM]"
 9. FOR 38RC'S PIPING, REFER TO "CIRCUIT A LIQUID CONNECTION" AND "CIRCUIT A SUCTION CONNECTION" DIMENSIONS SHOWN.
 10. DRAWING SHOWN WITH GREENSPEED OPTION.



FRONT VIEW

CENTER OF GRAVITY INCH [MM]			MACHINE OPTIONS			SERVICE VALVE CONNECTIONS	
CGx	CGy	CGz	GREENSPEED	COIL TYPE	DISCONNECT	SUCTION	LIQUID
35.2 [895]	44.3 [1128]	30.7 [781]	✓	CU-AL	✓	2-1/8" [51]	7/8" [22]



P.O. BOX 4808, SYRACUSE, N.Y. 13221

JOB NAME:

BUYER:

SALES ENG.:

MODEL NO.:

JOB NO.:

P.O. NO.:

PREPARED BY:

ELECTRICAL
CHARACTERISTICS:

JOB SITE LOCATION:

Job_Location 1

Job_Location 2

SALES OFFICE:

REFRIGERANT NO.:

NOTES:

Notes_1

Notes_2

38RC 050T STD
MACHINE ASSEMBLY
FRONT VIEW

DATE:

REVISION:

THIS DOCUMENT IS THE PROPERTY OF CARRIER CORP. AND IS DELIVERED UPON THE EXPRESS CONDITION THAT THE CONTENTS WILL NOT BE DISCLOSED OR USED WITHOUT CARRIER CORP. WRITTEN CONSENT.

SUBMISSION OF THESE DWG'S. OR DOCUMENTS DOES NOT CONSTITUTE PART PERFORMANCE OR ACCEPTANCE OF CONTRACT.

CARRIER DWG # 38RC-050-STD-F

REV. - SHT 01 OF 01

DATE: 08/05/2024

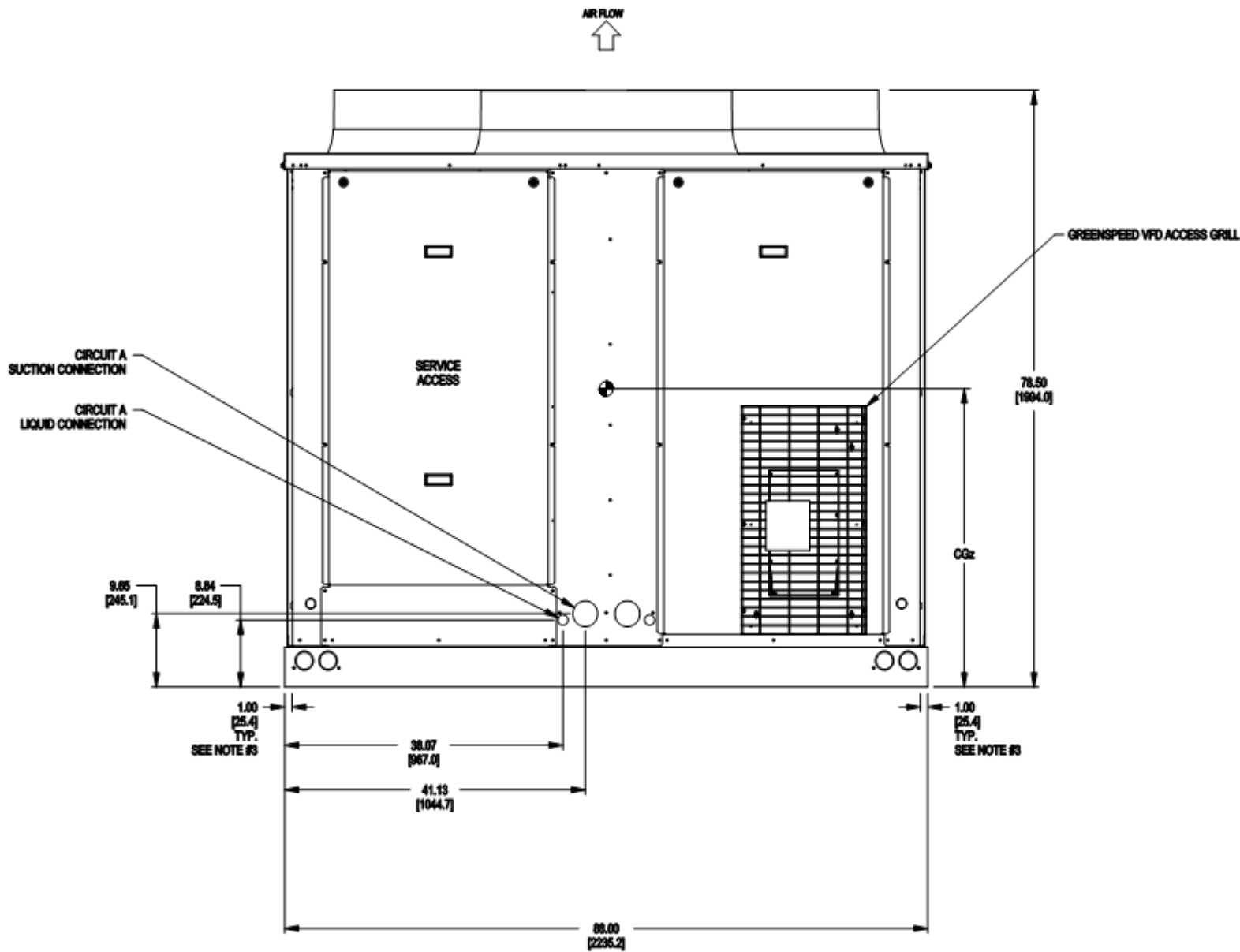
SUPERSEDES DWG. DATED:

-

38RC

SHT 02 OF 04

- NOTES:
1. BE SURE TO USE A WET RAG AND REMOVE ALL VALVE CORES BEFORE BRAZING FIELD PIPING.
 2. TEMPERATURE RELIEF DEVICES LOCATED ON LIQUID LINE AND HAVE 3/8" SAE FLARE CONNECTION.
DO NOT CAP OR OTHERWISE OBSTRUCT THE TEMPERATURE/PRESSURE RELIEF.
 3. ø 7/8" [22.2] PILOT HOLE PROVIDED FOR LOCATING FIELD POWER WIRING. ACTUAL HOLE REQUIRED DEPENDS ON FIELD WIRE SIZING.
 4. ø 1/2" [13.3] HOLE USED FOR MOUNTING UNIT.
 5. UNIT MUST HAVE AIRFLOW SERVICE CLEARANCES AS FOLLOWS:
TOP - DO NOT RESTRICT.
COIL SIDE - 42" [1067] FROM SOLID SURFACE.
PANEL SIDE - 48" [1219] PER NEC.
 6. CARRIER DOES NOT RECOMMEND INSTALLATION IN A PIT.
 7. UNIT CAN BE HANDLED USING THE FORK TRUCK LIFT POCKETS
 8. DIMENSIONS ARE IN "INCH [MM]"
 9. FOR 38RCS PIPING, REFER TO "CIRCUIT A LIQUID CONNECTION" AND "CIRCUIT A SUCTION CONNECTION" DIMENSIONS SHOWN.
 10. DRAWING SHOWN WITH GREENSPEED OPTION.



REAR VIEW

CENTER OF GRAVITY INCH [MM]			MACHINE OPTIONS			SERVICE VALVE CONNECTIONS	
CGx	CGy	CGz	GREENSPEED	COIL TYPE	DISCONNECT	SUCTION	LIQUID
35.2 [895]	44.3 [1128]	30.7 [781]	✓	CU-AL	✓	2-1/8" [41]	7/8" [22]



P.O. BOX 4906, SYRACUSE, N.Y. 13221

JOB NAME:

BUYER:

SALES ENG.:

MODEL NO.:

JOB NO.:

P.O. NO.:

PREPARED BY:

ELECTRICAL
CHARACTERISTICS:

JOBSITE LOCATION:
Job_Location 1
Job_Location 2

SALES OFFICE:

REFRIGERANT NO.:

NOTES:
Notes_1
Notes_2

38RC 050T STD
MACHINE ASSEMBLY
REAR VIEW

DATE:

REVISION:

THIS DOCUMENT IS THE PRO-
PERTY OF CARRIER CORP.
AND IS DELIVERED UPON THE
EXPRESS CONDITION THAT THE
CONTENTS WILL NOT BE DIS-
CLOSED OR USED WITHOUT
CARRIER CORP. WRITTEN
CONSENT.

SUBMISSION OF THESE DWG'S.
OR DOCUMENTS DOES NOT
CONSTITUTE PART PERFOR-
MANCE OR ACCEPTANCE OF
CONTRACT.

CARRIER DWG # 38RC-050-STD-R

REV. - SHT 01 OF 01

DATE: 08/05/2024

SUPERSEDES DWG. DATED:

38RC

SHT 03 OF 04

- NOTES:
1. BE SURE TO USE A WET RAG AND REMOVE ALL VALVE CORES BEFORE BRAZING FIELD PIPING.
 2. TEMPERATURE RELIEF DEVICES LOCATED ON LIQUID LINE AND HAVE 3/8" SAE FLARE CONNECTION.
DO NOT CAP OR OTHERWISE OBSTRUCT THE TEMPERATURE/PRESSURE RELIEF.
 3. ø 7/8" [22.2] PILOT HOLE PROVIDED FOR LOCATING FIELD POWER WIRING. ACTUAL HOLE REQUIRED DEPENDS ON FIELD WIRE SIZING.
 4. ø 1/2" [13.3] HOLE USED FOR MOUNTING UNIT.
 5. UNIT MUST HAVE AIRFLOW SERVICE CLEARANCES AS FOLLOWS:
TOP - DO NOT RESTRICT.
COIL SIDE - 42" [1067] FROM SOLID SURFACE.
PANEL SIDE - 48" [1219] PER NEC.
 6. CARRIER DOES NOT RECOMMEND INSTALLATION IN A PIT.
 7. UNIT CAN BE HANDLED USING THE FORK TRUCK LIFT POCKETS
 8. DIMENSIONS ARE IN "INCH [MM]"
 9. FOR 38RC'S PIPING, REFER TO "CIRCUIT A LIQUID CONNECTION" AND "CIRCUIT A SUCTION CONNECTION" DIMENSIONS SHOWN.
 10. DRAWING SHOWN WITH GREENSPEED OPTION.



P.O. BOX 4936, SYRACUSE, N.Y. 13221

JOB NAME:

BUYER:

SALES ENG.:

MODEL NO.:

JOB NO.:

P.O. NO.:

PREPARED BY:

ELECTRICAL
CHARACTERISTICS:

JOBSITE LOCATION:
Job_Location 1
Job_Location 2

SALES OFFICE:

REFRIGERANT NO.:

NOTES:
Notes_1
Notes_2

38RC 050T STD
MACHINE ASSEMBLY
SIDE VIEW

DATE:

REVISION:

THIS DOCUMENT IS THE PROPERTY OF CARRIER CORP.
AND IS DELIVERED UPON THE EXPRESS CONDITION THAT THE
CONTENTS WILL NOT BE DISCLOSED OR USED WITHOUT
CARRIER CORP. WRITTEN CONSENT.

SUBMISSION OF THESE DWG'S.
OR DOCUMENTS DOES NOT
CONSTITUTE PART PERFORMANCE OR ACCEPTANCE OF
CONTRACT.

CARRIER DWG # 38RC-050-STD-S

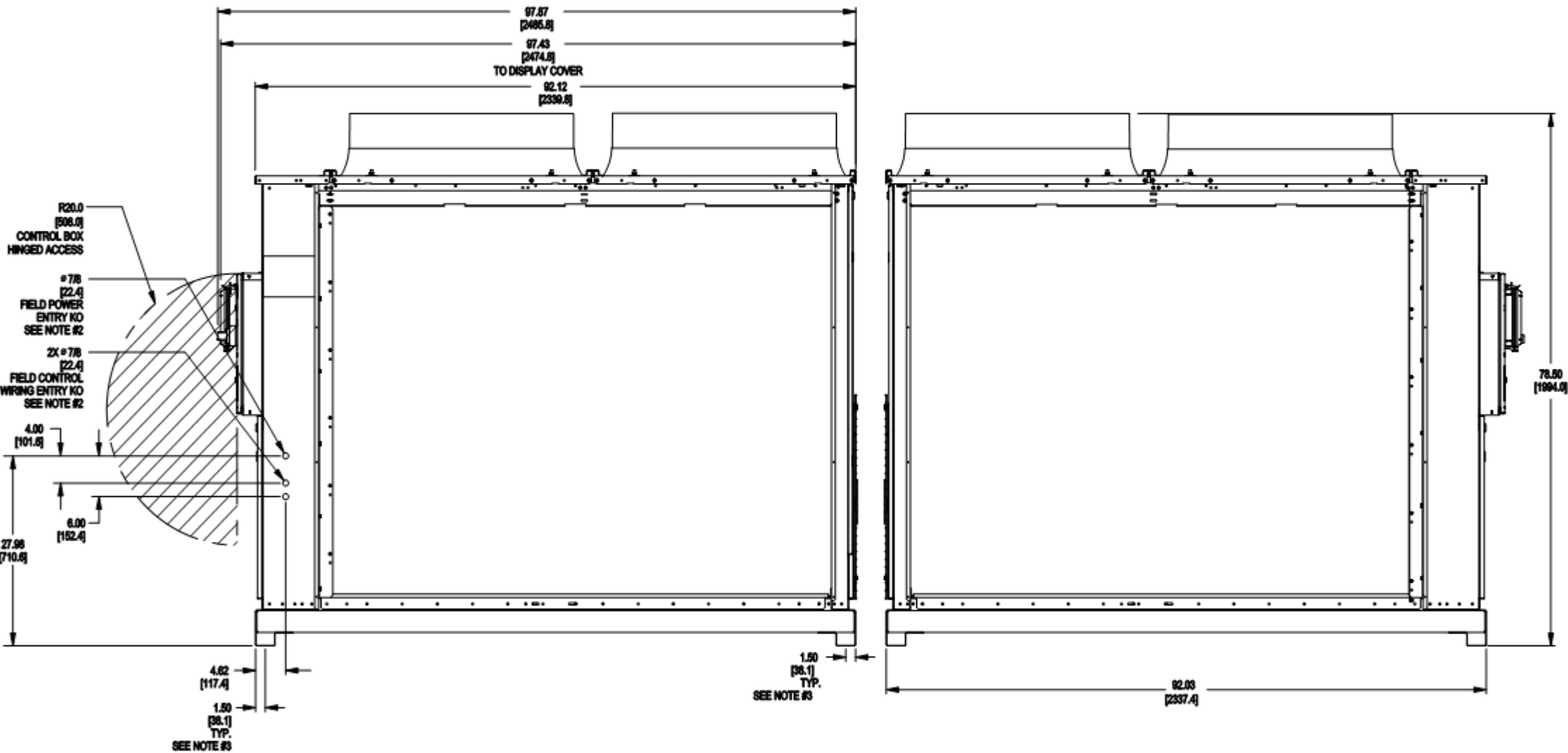
REV. - SHT 01 OF 01

DATE: 08/05/2024

SUPERSEDES DWG. DATED:

38RC

SHT 04 OF 04



SIDE VIEW

CENTER OF GRAVITY INCH [MM]			MACHINE OPTIONS			SERVICE VALVE CONNECTIONS	
CGx	CGy	CGz	GREENSPEED	COIL TYPE	DISCONNECT	SUCTION	LIQUID
35.2 [896]	44.3 [1128]	30.7 [781]	✓	CU-AL	✓	2-1/8" [41]	7/8" [22]