

# SMMSu VRF u-Series Outdoor Unit MMY-UP192H1HT9P-UL—Heat Pump (Elite Heat)

**TOSHIBA**  
*Carrier*

## Submittal Data

Job Name \_\_\_\_\_ Location \_\_\_\_\_

Tag \_\_\_\_\_



A230331

### SMMSu VRF Heat Pump (Elite Heat) Features

- Energy-efficient priority design
- Super-efficient heat exchanger
- Refrigerant cooling inverter system
- Intelligent VRF control
- Less refrigerant
- Space efficient design
- Configuration flexibility
- Wider Operating temperature range
- Comprehensive System construction solution
- Comprehensive Service solution

Header Unit Model		MMY-UP192H1HT9P-UL
Outdoor Unit Model Name		MUP096H1HT9P-UL + MUP096H1HT9P-UL
<b>PERFORMANCE</b>		
Nominal Cooling Capacity†	Btu/h	192,000
Nominal Heating Capacity†	Btu/h	216,000
Maximum number of indoor units		34
Total Connected Indoor Unit Capacity		288
<b>COOLING EFFICIENCY†</b>		
EER (Non-Ducted)	Btu/Wh	11.5
Power Consumption (Non-Ducted)	kW	15.99
EER (Ducted)	Btu/Wh	12.1
Power Consumption (Ducted)	kW	15.15
<b>HEATING EFFICIENCY†</b>		
COP (Non-Ducted)	Btu/Wh	4.6
Power Consumption (Non-Ducted)	kW	13.25
COP (Ducted)	Btu/Wh	4.5
Power Consumption (Ducted)	kW	13.29
<b>FAN</b>		
Fan Type		Propeller
Airflow	CFM	7770 + 7770
Motor Output	kW	0.33 x 2 + 0.33 x 2
<b>ELECTRICAL</b>		
Power Supply	V/Ph/Hz	230/3/60
MCA	A	52.3 + 52.3
MOCP	A	60.0 + 60.0

COMPRESSORS			
Type (Number)	Hermetic Twin Rotary (1)		
Motor Output	kW	6.3 + 6.3	
PHYSICAL DATA			
Pipe Connection Size - Liquid (High Pressure)	in.	1/2 (Brazing)	1/2 (Brazing)
Pipe Connection Size - Gas (Low Pressure)	in.	1-1/8 (Brazing)	1-1/8 (Brazing)
Refrigerant		R-410A	
Factory Charge††	lb	19.8 + 19.8	
External Finish		Munsell 1Y8.5/0.5	
Unit Width	in.	51.4 + 51.4	
Unit Height	in.	66.5 + 66.5	
Unit Depth	in.	31.1 + 31.1	
Unit Net Weight	lb	725 + 725	

### LEGEND

<b>EER</b>	—	Energy Efficiency Ratio
<b>COP</b>	—	Coefficient of Performance
<b>MCA</b>	—	Minimum Circuit Amps
<b>MOCP</b>	—	Maximum Overcurrent Protection

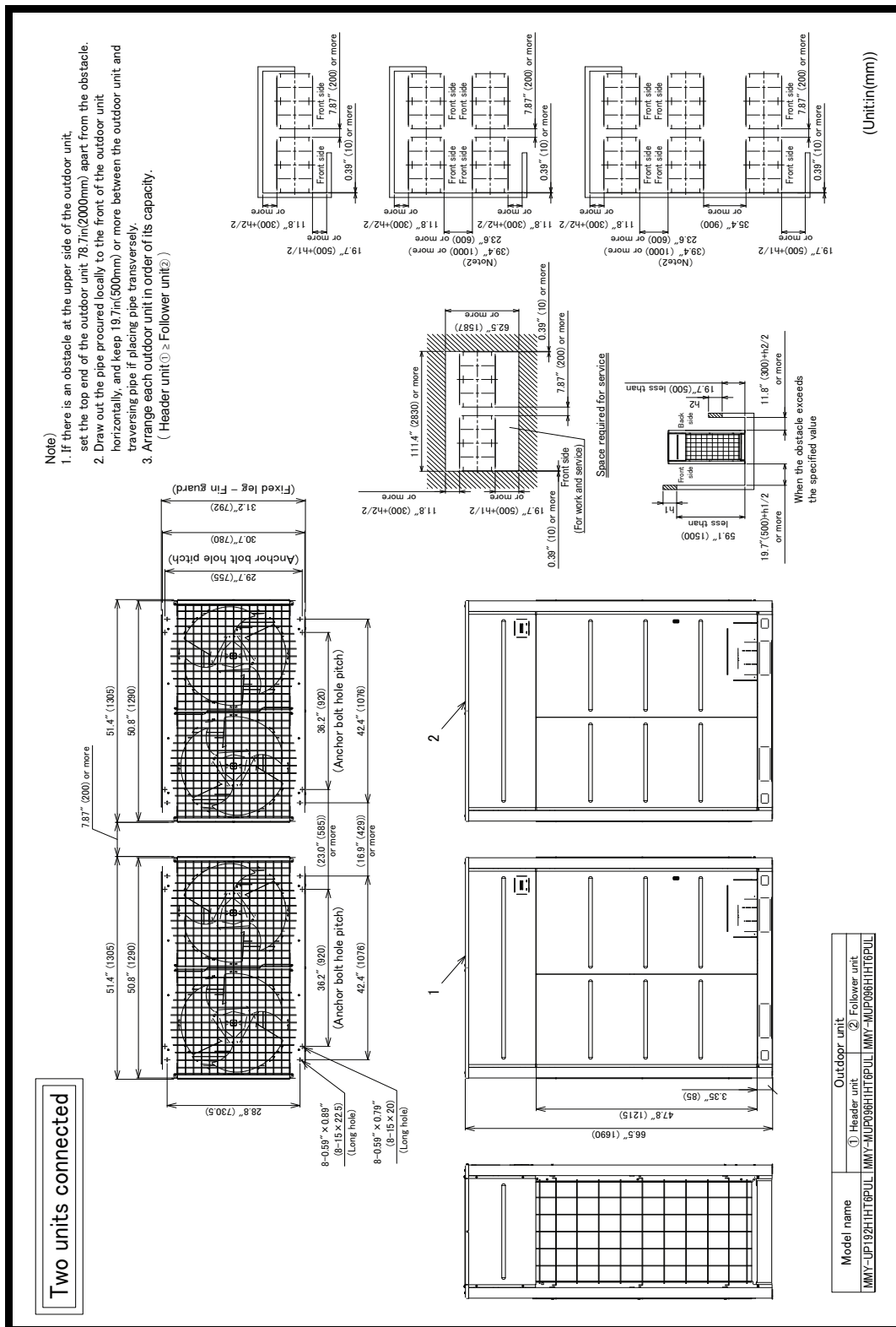
†Rated per AHRI (Air-Conditioning, Heating and Refrigeration Institute) 210/240 Standard.

Cooling: Indoor 80°F (27°C) db/67°F (20°C) wb; Outdoor 95°F (35°C) db

Heating: Indoor 70°F (21°C) db; Outdoor 47°F (8°C) db/43°F (6°C) wb

††Additional charge required.

## OUTDOOR UNIT HEAT PUMP (ELITE HEAT) MMY-UP192H1HT9P-UL DIMENSIONAL DRAWING



A230332

