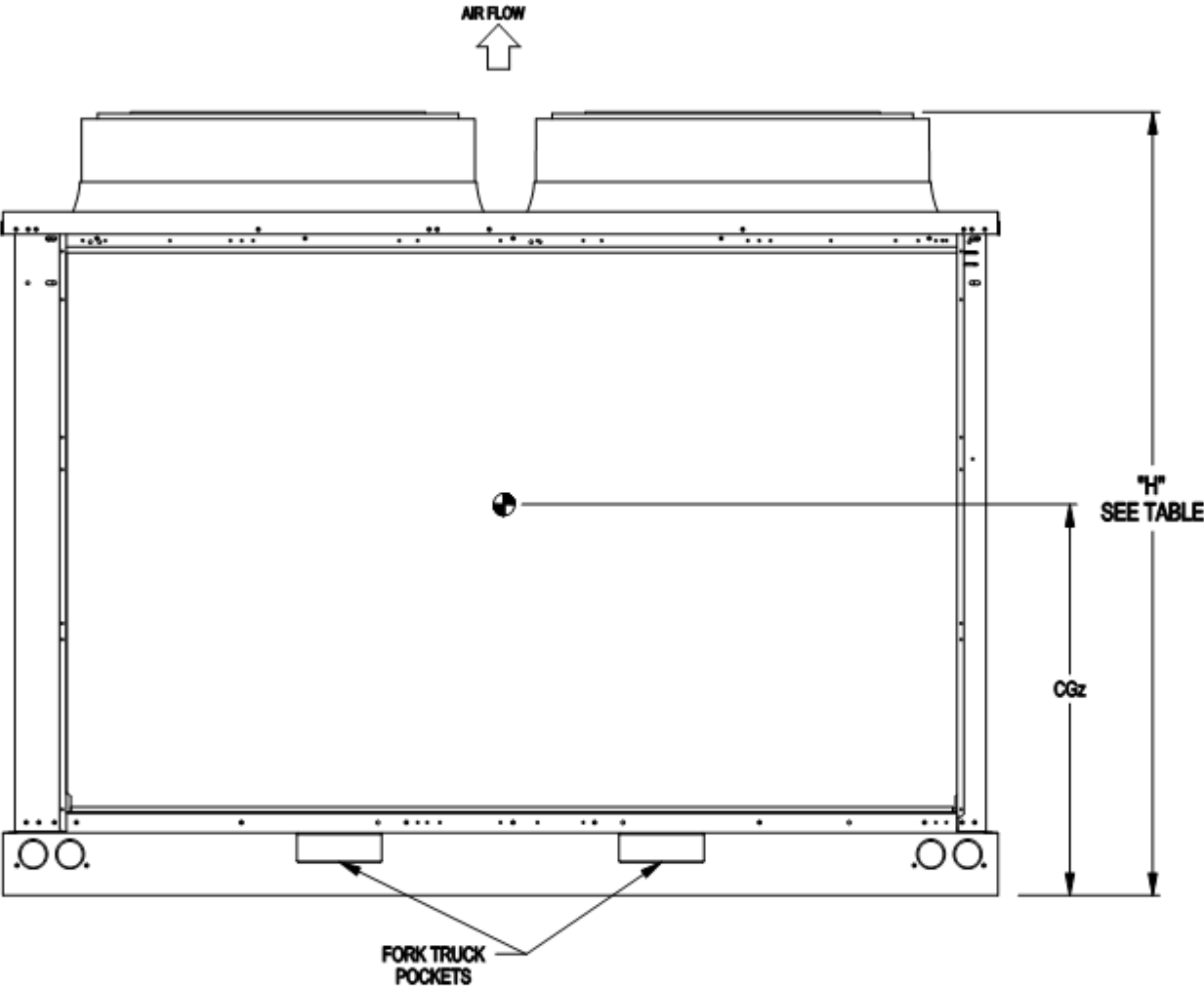


- NOTES:
1. BE SURE TO USE A WET RAG AND REMOVE ALL VALVE CORES BEFORE BRAZING FIELD PIPING.
  2. TEMPERATURE RELIEF DEVICE(S) LOCATED ON LIQUID LINE AND HAVE A 3/8" SAE FLARE CONNECTION.  
DO NOT CAP OR OTHERWISE OBSTRUCT THE TEMPERATURE/PRESSURE RELIEF.
  3. # 7/8" [22.41] PILOT HOLE PROVIDED FOR LOCATING FIELD POWER WIRING. ACTUAL HOLE REQUIRED  
DEPENDS ON FIELD WIRE SIZING.
  4. # 0.524" [13.30] HOLE USED FOR MOUNTING UNIT.
  5. UNIT MUST HAVE AIRFLOW CLEARANCES AS FOLLOWS:  
TOP-DO NOT RESTRICT.  
COIL SIDES - 42.0"[1067.00] FROM SOLID SURFACE  
PANEL SIDES - 48.0"[1219.00] PER NEC
  6. CARRIER DOES NOT RECOMMEND INSTALLATION IN A PIT.
  7. UNIT CAN BE HANDLED USING THE FORK TRUCK LIFT POCKETS.
  8. THE LIQUID AND HOT GAS PIPING CONNECTION ENDS APPROXIMATELY 12 INCHES INSIDE THE UNIT.  
FIELD INSTALLED SINGLE CIRCUIT MANIFOLD ENDS APPROXIMATELY 5 INCHES INSIDE THE UNIT.  
COIL SIDES - 42.0"[1067.00] FROM SOLID SURFACE  
PANEL SIDES - 48.0"[1219.00] PER NEC
  9. DIMENSIONS ARE IN "INCH [MM]".



REAR VIEW

UNIT	CIRCUIT	UNIT HEIGHT "H"	POWER ENTRY "P"	PIPING CONNECTION		CENTER OF GRAVITY		MACHINE OPTIONS	
				HOT GAS	LIQUID	X	Y	GREENSPEED	COIL TYPE
09RC020	SINGLE	66.50 [1689.1]	24.90 [631.5]	1-3/8"	5/8"	19.1 [486]	42.7 [1085]	✓	MCHX



JOB NAME:  
job\_name

BUYER:  
buyer\_name

SALES ENG.:  
sales\_eng

MODEL NO.:  
model\_number

JOB NO.:  
job\_number

P.O. NO.:

PREPARED BY:  
prepared\_by

ELECTRICAL  
CHARACTERISTICS:  
elect\_char

JOBSITE LOCATION:  
Job\_Location 1  
Job\_Location 2

SALES OFFICE:  
sales\_office

REFRIGERANT NO.:

NOTES:  
Notes\_1  
Notes\_2

09RC-020-STD-R  
MACHINE ASSEMBLY  
REAR VIEW

DATE:

REVISION: \_rev#

THIS DOCUMENT IS THE PRO-  
PERTY OF CARRIER CORP.  
AND IS DELIVERED UPON THE  
EXPRESS CONDITION THAT THE  
CONTENTS WILL NOT BE DIS-  
CLOSED OR USED WITHOUT  
CARRIER CORP. WRITTEN  
CONSENT.

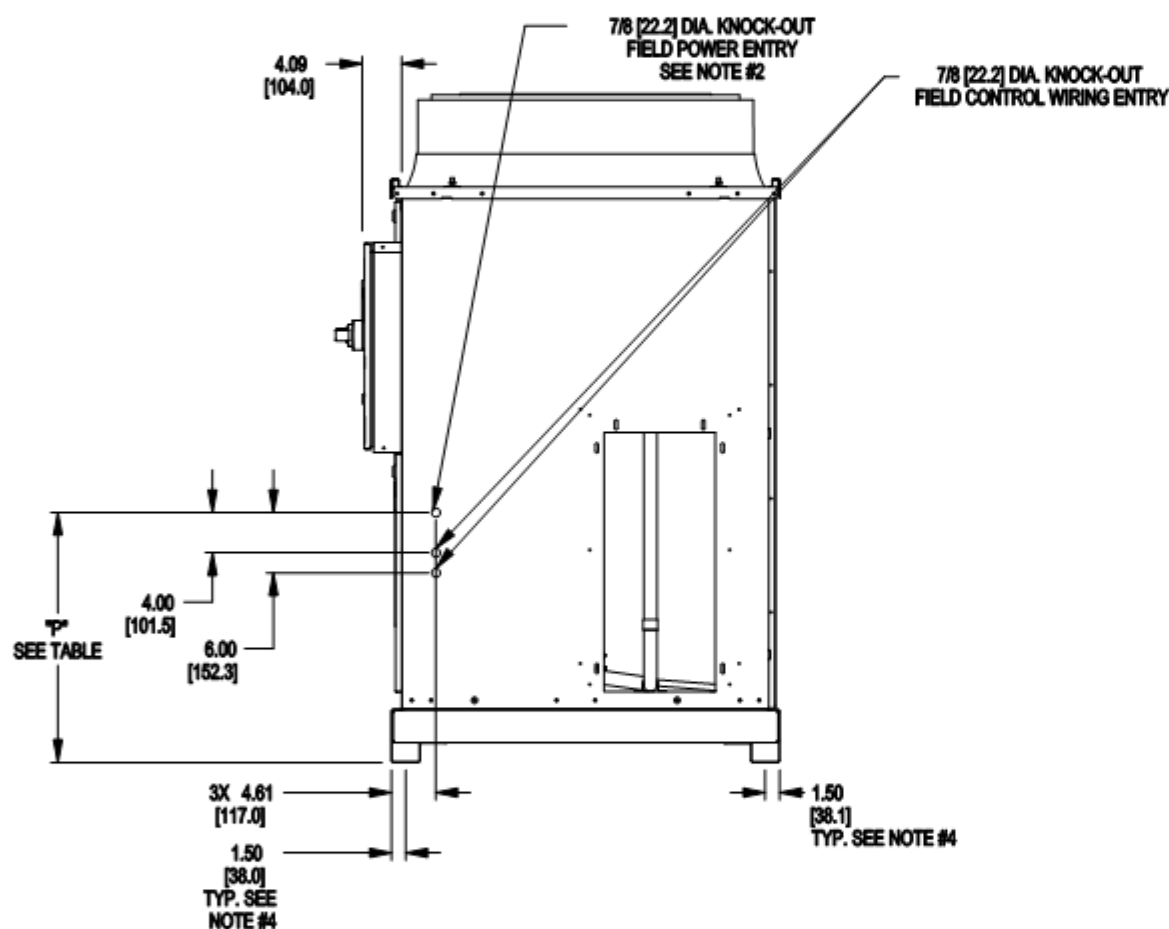
SUBMISSION OF THESE DWG'S.  
OR DOCUMENTS DOES NOT  
CONSTITUTE PART PERFOR-  
MANCE OR ACCEPTANCE OF  
CONTRACT.

CARRIER DWG # 09RC-020-STD-R  
REV. - SHT 01 OF 01  
DATE: 08/02/2024  
SUPERSEDES DWG. DATED:  
..

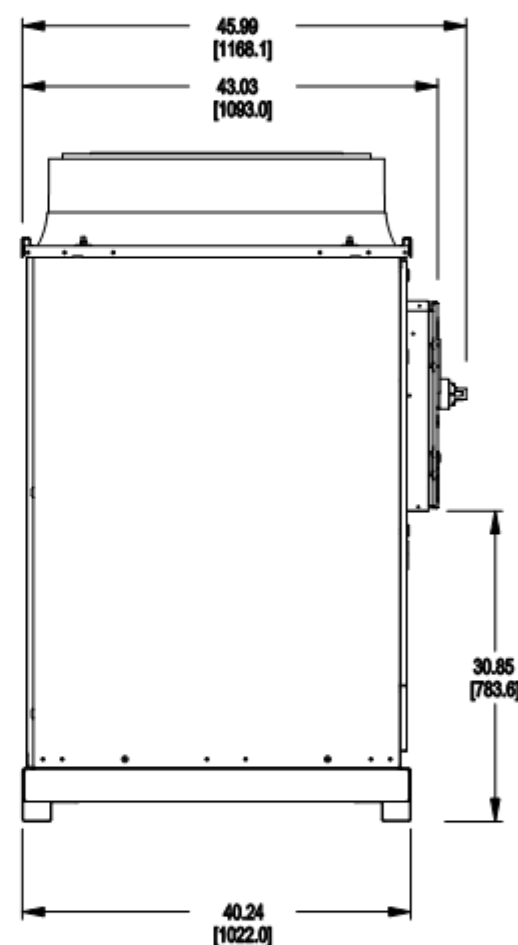
09RC  
SHT 01 OF 04

**NOTES:**

1. BE SURE TO USE A WET RAG AND REMOVE ALL VALVE CORES BEFORE BRAZING FIELD PIPING.
2. TEMPERATURE RELIEF DEVICE(S) LOCATED ON LIQUID LINE AND HAVE A 3/8" SAE FLARE CONNECTION.  
DO NOT CAP OR OTHERWISE OBSTRUCT THE TEMPERATURE/PRESSURE RELIEF.
3.  $\varnothing$  7/8" [22.41] PILOT HOLE PROVIDED FOR LOCATING FIELD POWER WIRING. ACTUAL HOLE REQUIRED DEPENDS ON FIELD WIRE SIZING.
4.  $\varnothing$  0.524" [13.30] HOLE USED FOR MOUNTING UNIT.
5. UNIT MUST HAVE AIRFLOW CLEARANCES AS FOLLOWS:  
TOP-DO NOT RESTRICT.  
COIL SIDES - 42.0" [1067.00] FROM SOLID SURFACE  
PANEL SIDES - 48.0" [1219.00] PER NEC
6. CARRIER DOES NOT RECOMMEND INSTALLATION IN A PIT.
7. UNIT CAN BE HANDLED USING THE FORK TRUCK LIFT POCKETS.
8. THE LIQUID AND HOT GAS PIPING CONNECTION ENDS APPROXIMATELY 12 INCHES INSIDE THE UNIT.  
FIELD INSTALLED SINGLE CIRCUIT MANIFOLD ENDS APPROXIMATELY 5 INCHES INSIDE THE UNIT.  
COIL SIDES - 42.0" [1067.00] FROM SOLID SURFACE  
PANEL SIDES - 48.0" [1219.00] PER NEC
9. DIMENSIONS ARE IN "INCH [MM]".



**RIGHT SIDE VIEW**



**LEFT SIDE VIEW**

UNIT	CIRCUIT	UNIT HEIGHT "F"	POWER ENTRY "F"	PIPING CONNECTION		CENTER OF GRAVITY		MACHINE OPTIONS	
				HOT GAS	LIQUID	X	Y	GREENSPEED	COIL TYPE
09RC020	SINGLE	66.50 [1689.1]	24.90 [631.5]	1-3/8"	5/8"	19.1 [486]	42.7 [1085]	✓	MCHX



P.O. BOX 4906, SYRACUSE, N.Y. 13221

JOB NAME:  
job\_name

BUYER:  
buyer\_name

SALES ENG.:  
sales\_eng

MODEL NO.:  
model\_number

JOB NO.:  
job\_number

P.O. NO.:

PREPARED BY:  
prepared\_by

ELECTRICAL  
CHARACTERISTICS:  
elect\_char

JOBSITE LOCATION:  
Job\_Location 1  
Job\_Location 2

SALES OFFICE:  
sales\_office

REFRIGERANT NO.:

NOTES:  
Notes\_1  
Notes\_2

09RC-020-STD-S  
MACHINE ASSEMBLY  
SIDE VIEW

DATE:

REVISION: \_rev#

THIS DOCUMENT IS THE PROPERTY OF CARRIER CORP. AND IS DELIVERED UPON THE EXPRESS CONDITION THAT THE CONTENTS WILL NOT BE DISCLOSED OR USED WITHOUT CARRIER CORP. WRITTEN CONSENT.

SUBMISSION OF THESE DWG'S. OR DOCUMENTS DOES NOT CONSTITUTE PART PERFORMANCE OR ACCEPTANCE OF CONTRACT.

CARRIER DWG # 09RC-020-STD-S

REV. - SHT 01 OF 01

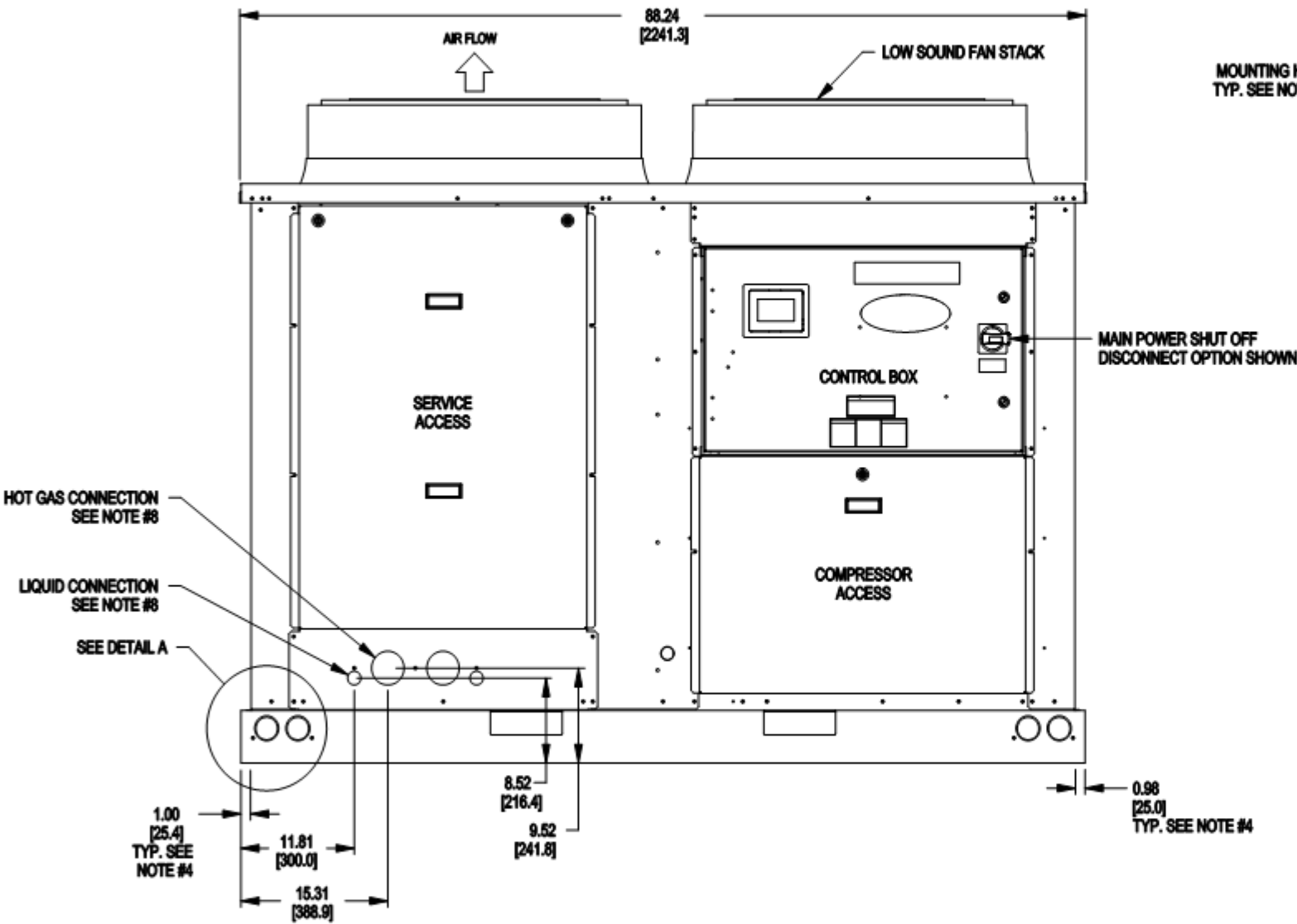
DATE: 08/02/2024

SUPERSEDES DWG. DATED:

09RC

SHT 02 OF 04

- NOTES:
1. BE SURE TO USE A WET RAG AND REMOVE ALL VALVE CORES BEFORE BRAZING FIELD PIPING.
  2. TEMPERATURE RELIEF DEVICE(S) LOCATED ON LIQUID LINE AND HAVE A 3/8" SAE FLARE CONNECTION. DO NOT CAP OR OTHERWISE OBSTRUCT THE TEMPERATURE/PRESSURE RELIEF.
  3. # 7/8" [22.4] PILOT HOLE PROVIDED FOR LOCATING FIELD POWER WIRING. ACTUAL HOLE REQUIRED DEPENDS ON FIELD WIRE SIZING.
  4. # 0.524" [13.30] HOLE USED FOR MOUNTING UNIT.
  5. UNIT MUST HAVE AIRFLOW CLEARANCES AS FOLLOWS:  
TOP-DO NOT RESTRICT.  
COIL SIDES - 42.0" [1067.00] FROM SOLID SURFACE  
PANEL SIDES - 48.0" [1219.00] PER NEC
  6. CARRIER DOES NOT RECOMMEND INSTALLATION IN A PIT.
  7. UNIT CAN BE HANDLED USING THE FORK TRUCK LIFT POCKETS.
  8. THE LIQUID AND HOT GAS PIPING CONNECTION ENDS APPROXIMATELY 12 INCHES INSIDE THE UNIT.  
FIELD INSTALLED SINGLE CIRCUIT MANIFOLD ENDS APPROXIMATELY 5 INCHES INSIDE THE UNIT.  
COIL SIDES - 42.0" [1067.00] FROM SOLID SURFACE  
PANEL SIDES - 48.0" [1219.00] PER NEC
  9. DIMENSIONS ARE IN "INCH [MM]".



FRONT VIEW

UNIT	CIRCUIT	UNIT HEIGHT "H"	POWER ENTRY "P"	PIPING CONNECTION		CENTER OF GRAVITY		MACHINE OPTIONS	
				HOT GAS	LIQUID	X	Y	GREENSPEED	COIL TYPE
09RC020	SINGLE	66.50 [1689.1]	24.90 [631.5]	1-3/8"	5/8"	19.1 [486]	42.7 [1085]	✓	MCHX



JOB NAME:  
job\_name

BUYER:  
buyer\_name

SALES ENG.:  
sales\_eng

MODEL NO.:  
model\_number

JOB NO.:  
job\_number

P.O. NO.:

PREPARED BY:  
prepared\_by

ELECTRICAL  
CHARACTERISTICS:  
elect\_char

JOBSITE LOCATION:  
Job\_Location 1  
Job\_Location 2

SALES OFFICE:  
sales\_office

REFRIGERANT NO.:

NOTES:  
Notes\_1  
Notes\_2

09RC-020-STD-F  
MACHINE ASSEMBLY  
FRONT VIEW

DATE:

REVISION: \_rev#

THIS DOCUMENT IS THE PRO-  
PERTY OF CARRIER CORP.  
AND IS DELIVERED UPON THE  
EXPRESS CONDITION THAT THE  
CONTENTS WILL NOT BE DIS-  
CLOSED OR USED WITHOUT  
CARRIER CORP. WRITTEN  
CONSENT.

SUBMISSION OF THESE DWG'S.  
OR DOCUMENTS DOES NOT  
CONSTITUTE PART PERFOR-  
MANCE OR ACCEPTANCE OF  
CONTRACT.

CARRIER DWG # 09RC-020-STD-F

REV. - SHT 01 OF 01

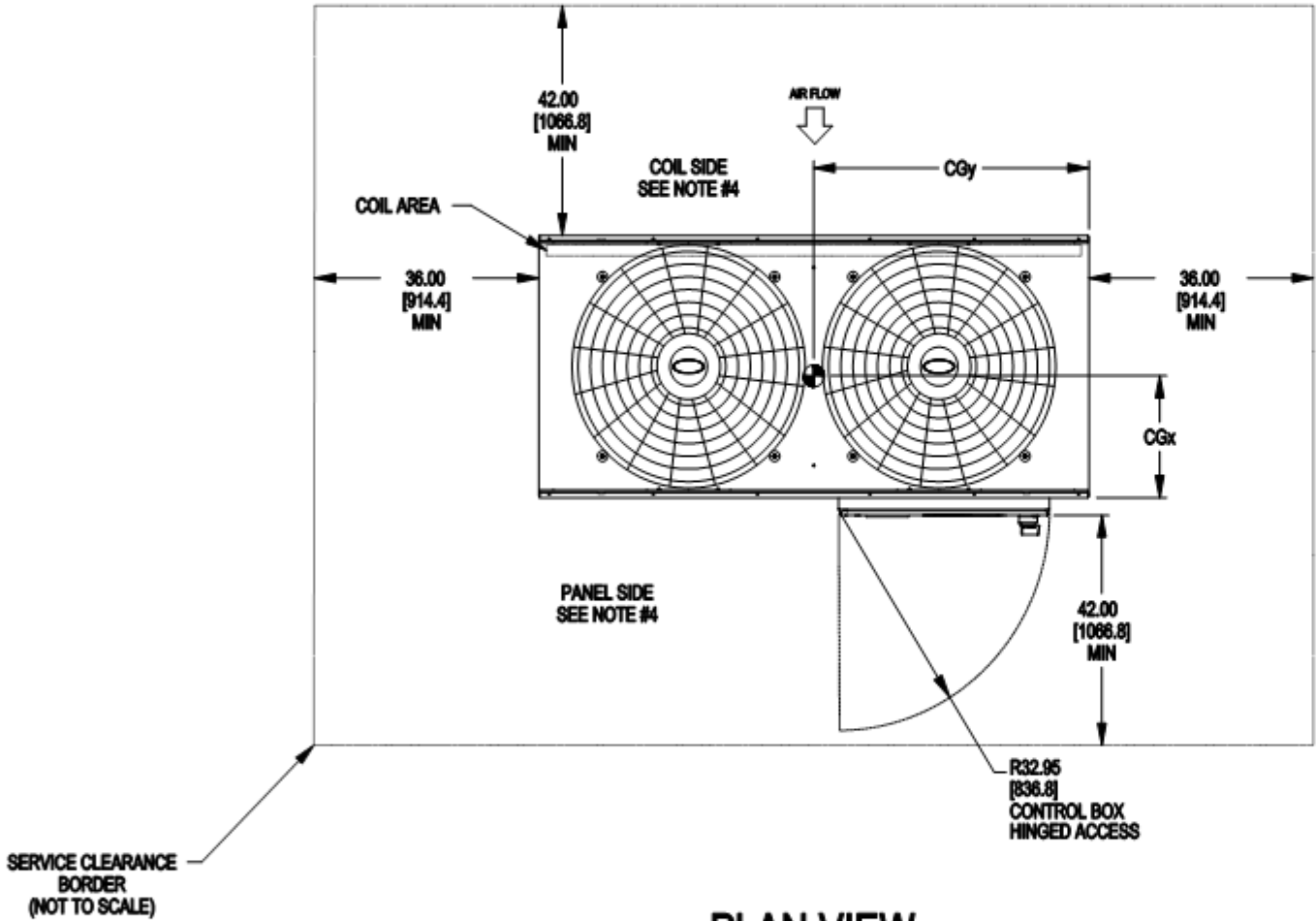
DATE: 08/02/2024

SUPERSEDES DWG. DATED:

09RC

SHT 03 OF 04

- NOTES:
1. BE SURE TO USE A WET RAG AND REMOVE ALL VALVE CORES BEFORE BRAZING FIELD PIPING.
  2. TEMPERATURE RELIEF DEVICE(S) LOCATED ON LIQUID LINE AND HAVE A 3/8" SAE FLARE CONNECTION.  
DO NOT CAP OR OTHERWISE OBSTRUCT THE TEMPERATURE/PRESSURE RELIEF.
  3.  $\varnothing 7/8"$  [22.41] PILOT HOLE PROVIDED FOR LOCATING FIELD POWER WIRING. ACTUAL HOLE REQUIRED  
DEPENDS ON FIELD WIRE SIZING.
  4.  $\varnothing 0.524"$  [13.30] HOLE USED FOR MOUNTING UNIT.
  5. UNIT MUST HAVE AIRFLOW CLEARANCES AS FOLLOWS:  
TOP-DO NOT RESTRICT.  
COIL SIDES - 42.0"[1066.8] FROM SOLID SURFACE  
PANEL SIDES - 48.0"[1219.0] PER NEC
  6. CARRIER DOES NOT RECOMMEND INSTALLATION IN A PIT.
  7. UNIT CAN BE HANDLED USING THE FORK TRUCK LIFT POCKETS.
  8. THE LIQUID AND HOT GAS PIPING CONNECTION ENDS APPROXIMATELY 12 INCHES INSIDE THE UNIT.  
FIELD INSTALLED SINGLE CIRCUIT MANIFOLD ENDS APPROXIMATELY 5 INCHES INSIDE THE UNIT.  
COIL SIDES - 42.0"[1066.8] FROM SOLID SURFACE  
PANEL SIDES - 48.0"[1219.0] PER NEC
  9. DIMENSIONS ARE IN "INCH [MM]".



PLAN VIEW

UNIT	CIRCUIT	UNIT HEIGHT "F"	POWER ENTRY "F"	PIPING CONNECTION		CENTER OF GRAVITY		MACHINE OPTIONS	
				HOT GAS	LIQUID	X	Y	GREENSPEED	COIL TYPE
09RC020	SINGLE	66.50 [1689.1]	24.90 [631.5]	1-3/8"	5/8"	19.1 [486]	42.7 [1085]	✓	MCHX



JOB NAME:  
job\_name

BUYER:  
buyer\_name

SALES ENG.:  
sales\_eng

MODEL NO.:  
model\_number

JOB NO.:  
job\_number

P.O. NO.:

PREPARED BY:  
prepared\_by

ELECTRICAL  
CHARACTERISTICS:  
elect\_char

JOBSITE LOCATION:  
Job\_Location 1  
Job\_Location 2

SALES OFFICE:  
sales\_office

REFRIGERANT NO.:

NOTES:  
Notes\_1  
Notes\_2

09RC-020-STD-P  
MACHINE ASSEMBLY  
PLAN VIEW

DATE:

REVISION: \_rev#

THIS DOCUMENT IS THE PRO-  
PERTY OF CARRIER CORP.  
AND IS DELIVERED UPON THE  
EXPRESS CONDITION THAT THE  
CONTENTS WILL NOT BE DIS-  
CLOSED OR USED WITHOUT  
CARRIER CORP. WRITTEN  
CONSENT.

SUBMISSION OF THESE DWG'S.  
OR DOCUMENTS DOES NOT  
CONSTITUTE PART PERFOR-  
MANCE OR ACCEPTANCE OF  
CONTRACT.

CARRIER DWG # 09RC-020-STD-P  
REV. - SHT 01 OF 01  
DATE: 08/02/2024  
SUPERSEDES DWG. DATED:  
"

09RC  
SHT 04 OF 04