

# SMMSu VRF u-Series Outdoor Unit MMY-UP144H1HT9P-UL—Heat Pump (Elite Heat)

**TOSHIBA**  
*Carrier*

## Submittal Data

Job Name \_\_\_\_\_ Location \_\_\_\_\_

Tag \_\_\_\_\_



A230331

### SMMSu VRF Heat Pump (Elite Heat) Features

- Energy-efficient priority design
- Super-efficient heat exchanger
- Refrigerant cooling inverter system
- Intelligent VRF control
- Less refrigerant
- Space efficient design
- Configuration flexibility
- Wider Operating temperature range
- Comprehensive System construction solution
- Comprehensive Service solution

Header Unit Model		MMY-UP144H1HT9P-UL
Outdoor Unit Model Name		MUP072H1HT9P-UL + MUP072H1HT9P-UL
PERFORMANCE		
Nominal Cooling Capacity†	Btu/h	144,000
Nominal Heating Capacity†	Btu/h	162,000
Maximum number of indoor units		25
Total Connected Indoor Unit Capacity		216
COOLING EFFICIENCY†		
EER (Non-Ducted)	Btu/Wh	13.0
Power Consumption (Non-Ducted)	kW	10.56
EER (Ducted)	Btu/Wh	13.70
Power Consumption (Ducted)	kW	10.04
HEATING EFFICIENCY†		
COP (Non-Ducted)	Btu/Wh	4.9
Power Consumption (Non-Ducted)	kW	9.21
COP (Ducted)	Btu/Wh	4.80
Power Consumption (Ducted)	kW	9.45
FAN		
Fan Type		Propeller
Airflow	CFM	6340 + 6340
Motor Output	kW	0.24 x 1 + 0.24 x 1
ELECTRICAL		
Power Supply	V/Ph/Hz	230/3/60
MCA	A	38.8 + 38.8
MOCP	A	40.0 + 40.0

COMPRESSORS			
Type (Number)	Hermetic Twin Rotary (1)		
Motor Output	kW	4.6 + 4.6	
PHYSICAL DATA			
Pipe Connection Size - Liquid (High Pressure)	in.	1/2 (Brazing)	1/2 (Brazing)
Pipe Connection Size - Gas (Low Pressure)	in.	3/4 (Brazing)	3/4 (Brazing)
Refrigerant		R-410A	
Factory Charge††	lb	19.8 + 19.8	
External Finish		Munsell 1Y8.5/0.5	
Unit Width	in.	51.4 + 51.4	
Unit Height	in.	66.5 + 66.5	
Unit Depth	in.	31.1 + 31.1	
Unit Net Weight	lb	597 + 597	

### LEGEND

EER	—	Energy Efficiency Ratio
COP	—	Coefficient of Performance
MCA	—	Minimum Circuit Amps
MOCP	—	Maximum Overcurrent Protection

†Rated per AHRI (Air-Conditioning, Heating and Refrigeration Institute) 210/240 Standard.

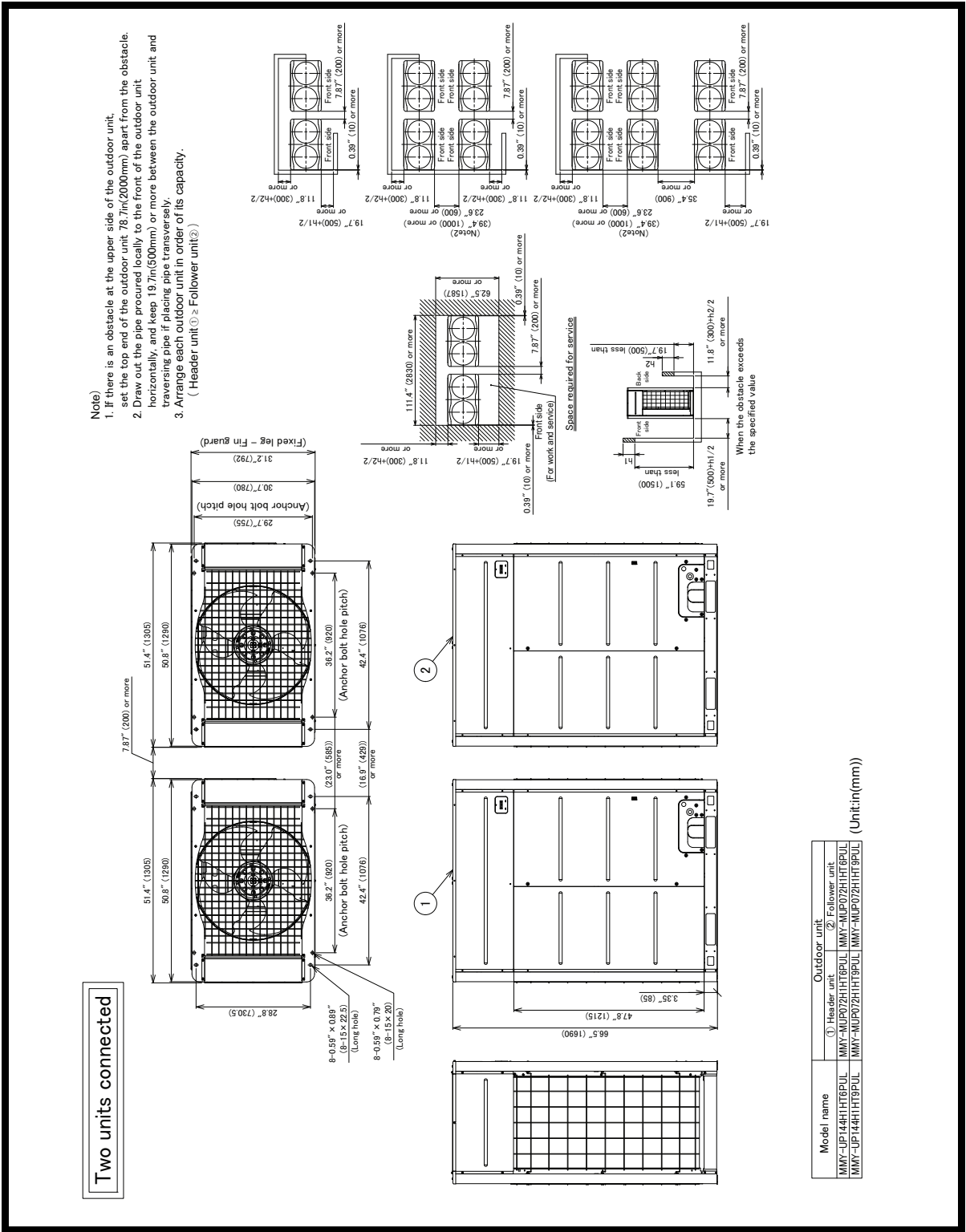
Cooling: Indoor 80°F (27°C) db/67°F (20°C) wb; Outdoor 95°F (35°C) db

Heating: Indoor 70°F (21°C) db; Outdoor 47°F (8°C) db/43°F (6°C) wb

††Additional charge required.

# OUTDOOR UNIT HEAT PUMP (ELITE HEAT) MMY-UP144H1HT9P-UL

## DIMENSIONAL DRAWING



A230328

