

# SMMSu VRF u-Series Outdoor Unit MMY-MUP1681HT6P-UL—Heat Pump

**TOSHIBA**  
*Carrier*

## Submittal Data

Job Name \_\_\_\_\_ Location \_\_\_\_\_

Tag \_\_\_\_\_



A230327

### SMMSu VRF Heat Pump Features

- Energy-efficient priority design
- Super-efficient heat exchanger
- Refrigerant cooling inverter system
- Intelligent VRF control
- Less refrigerant
- Space efficient design
- Configuration flexibility
- Wider Operating temperature range
- Comprehensive System construction solution
- Comprehensive Service solution

Header Unit Model		MMY-MUP1681HT6P-UL
<b>PERFORMANCE</b>		
Nominal Cooling Capacity†	Btu/h	168,000
Nominal Heating Capacity†	Btu/h	189,000
Maximum number of indoor units		30
Total Connected Indoor Unit Capacity		336
<b>COOLING EFFICIENCY†</b>		
EER (Non-Ducted)	Btu/Wh	12.0
Power Consumption (Non-Ducted)	kW	13.25
EER (Ducted)	Btu/Wh	12.0
Power Consumption (Ducted)	kW	13.25
<b>HEATING EFFICIENCY†</b>		
COP (Non-Ducted)	Btu/Wh	3.7
Power Consumption (Non-Ducted)	kW	14.22
COP (Ducted)	Btu/Wh	3.9
Power Consumption (Ducted)	kW	13.38
<b>FAN</b>		
Fan Type		Propeller
Airflow	CFM	8670
Motor Output	kW	0.73 x 2
<b>ELECTRICAL</b>		
Power Supply	V/Ph/Hz	460/3/60
MCA	A	27.4
MOCP	A	40.0

<b>COMPRESSORS</b>		
Type (Number)		Hermetic Twin Rotary (1)
Motor Output	kW	12.1
<b>PHYSICAL DATA</b>		
Pipe Connection Size - Liquid (High Pressure)	in.	5/8 (Brazeing)
Pipe Connection Size - Gas (Low Pressure)	in.	1-1/8 (Brazeing)
Refrigerant		R-410A
Factory Charge††	lb	19.8
External Finish		Munsell 1Y8.5/0.5
Unit Width	in.	51.4
Unit Height	in.	66.5
Unit Depth	in.	31.1
Unit Net Weight	lb	774

### LEGEND

<b>EER</b>	—	Energy Efficiency Ratio
<b>COP</b>	—	Coefficient of Performance
<b>MCA</b>	—	Minimum Circuit Amps
<b>MOCP</b>	—	Maximum Overcurrent Protection

†Rated per AHRI (Air-Conditioning, Heating and Refrigeration Institute) 210/240 Standard.

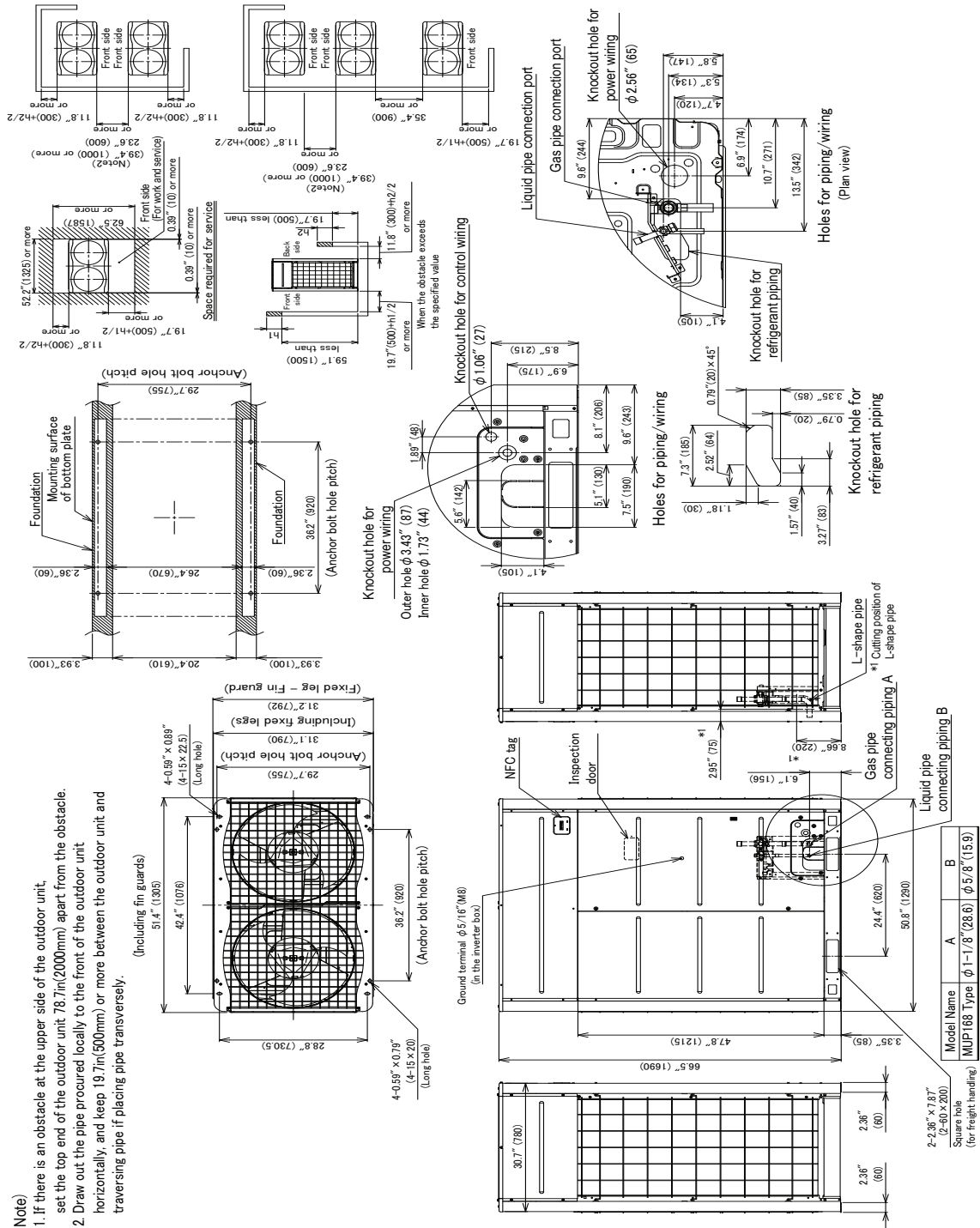
Cooling: Indoor 80°F (27°C) db/67°F (20°C) wb; Outdoor 95°F (35°C) db

Heating: Indoor 70°F (21°C) db; Outdoor 47°F (8°C) db/43°F (6°C) wb

††Additional charge required.

# OUTDOOR UNIT HEAT PUMP MMY-MUP1681HT6P-UL

## DIMENSIONAL DRAWING



(Unit:in(mm))

A230328

