

# Installation Instructions

Part Nos. CADUCADP001A00

## CONTENTS

	Page
<b>SAFETY CONSIDERATIONS</b> .....	1
<b>INTRODUCTION</b> .....	1
<b>PRE-INSTALLATION</b> .....	6
<b>Complete Pre-Installation Checks</b> .....	6
<b>Check Unit Clearance</b> .....	6
<b>INSTALLATION</b> .....	6
<b>Assemble and Secure Duct Adapter</b> .....	6
<b>Connecting Adapter to Ductwork</b> .....	8
<b>START-UP</b> .....	8
<b>SERVICE</b> .....	8
<b>Cleaning Duct Adapter</b> .....	8

## SAFETY CONSIDERATIONS

Installation of this accessory can be hazardous due to electrical components and equipment location (such as a ceiling or elevated structure). Only trained, qualified installers and service mechanics should install and service this equipment.

When installing this accessory, observe precautions in the literature, labels attached to the equipment, and any other safety precautions that apply.

- Follow all safety codes.
- Wear safety glasses and work gloves.
- Use care in handling and installing this accessory.

### ⚠ WARNING

To avoid the possibility of electrical shock, open and tag all disconnects before installing this equipment.

### ⚠ CAUTION

Wear a hard hat and safety shoes when working in an area where there is danger of falling objects. Wear safety glasses to protect your eyes. When welding, brazing, or cutting, wear gloves and goggles for personal protection.

Follow safe rigging practices when handling larger duct adapters. Refer to ANSI Z49.1 (latest edition) for American Welding Society Standards of safe welding and flame cutting practices.

All field piping must conform to local codes.

## INTRODUCTION

The duct adapter accessories provide blow-thru heat sources for 6 to 10 ton packaged air-handling units (see Table 1). The duct adapters are mounted directly over the unit fan discharge(s) and do not require duct flanges. Table 2 shows accessory kit weight and contents. See Fig. 1-4 for duct adapter dimensions.

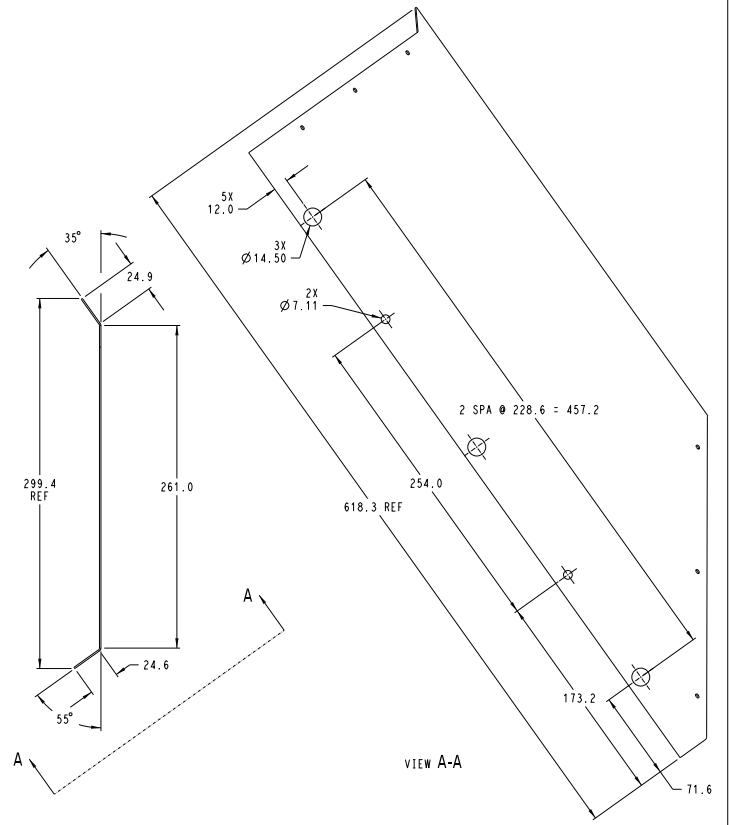
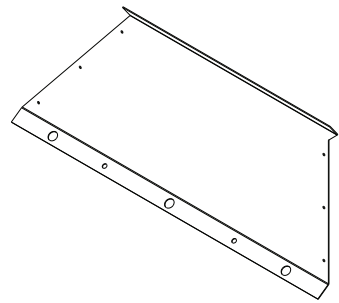
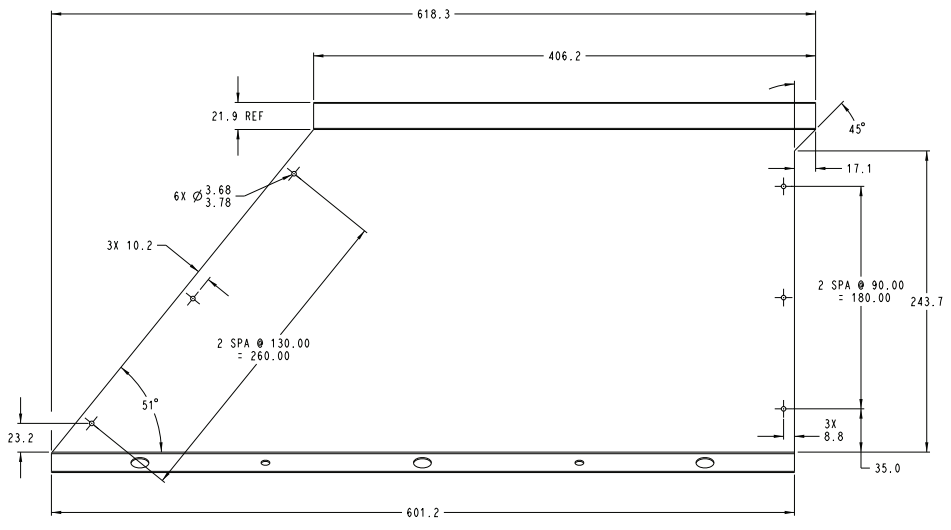
**Table 1 — Package Usage**

BRAND	MODEL	UNIT SIZE
CARRIER	40RF	07-12
BRYANT	524F	07-12
ICP	F*X	072-120

**Table 2 — Package Contents**

DUCT ADAPTER PKG PART NO.	PACKAGE CONTENTS
CADUCADP001A00	4 Duct Panels (Items 1-4; Right, Front, Left, and Back)
	12 Hex Screws

NOTE:  
 1. ALL DIMENSIONS ARE TO OUTSIDE OF PART, UNLESS OTHERWISE SPECIFIED.

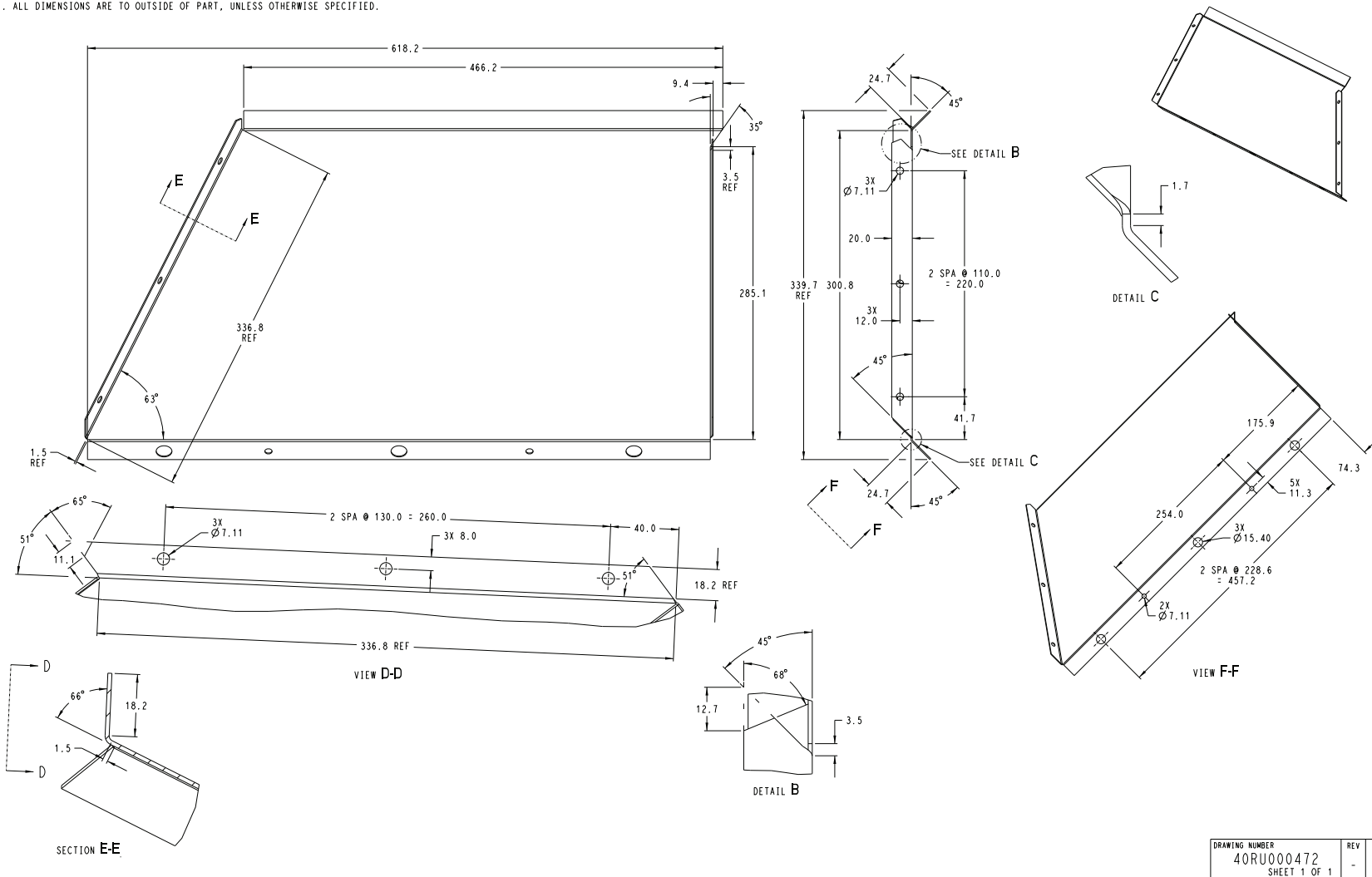


DRAWING NUMBER	REV	ITR
40RU000473	-	5
SHEET 1 OF 1		

Fig. 1 — Duct Adapter Dimensions, Item 1

NOTE:

1. ALL DIMENSIONS ARE TO OUTSIDE OF PART, UNLESS OTHERWISE SPECIFIED.



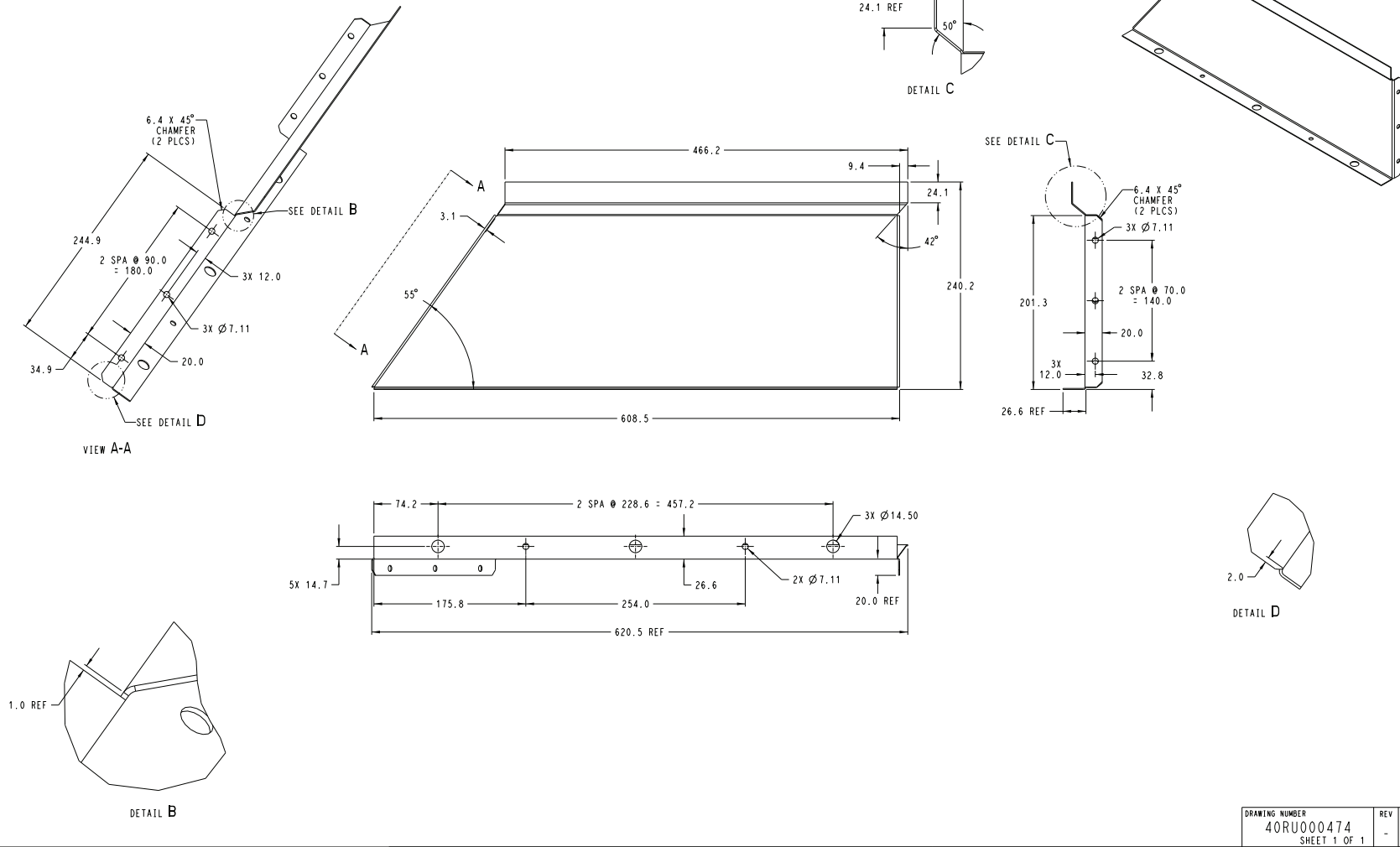
3

Fig. 2 — Duct Adapter Dimensions, Item 2

DRAWING NUMBER	REV	ITR
40RU000472	-	8
SHEET 1 OF 1		

NOTE:

1. ALL DIMENSIONS ARE TO OUTSIDE OF PART, UNLESS OTHERWISE SPECIFIED.

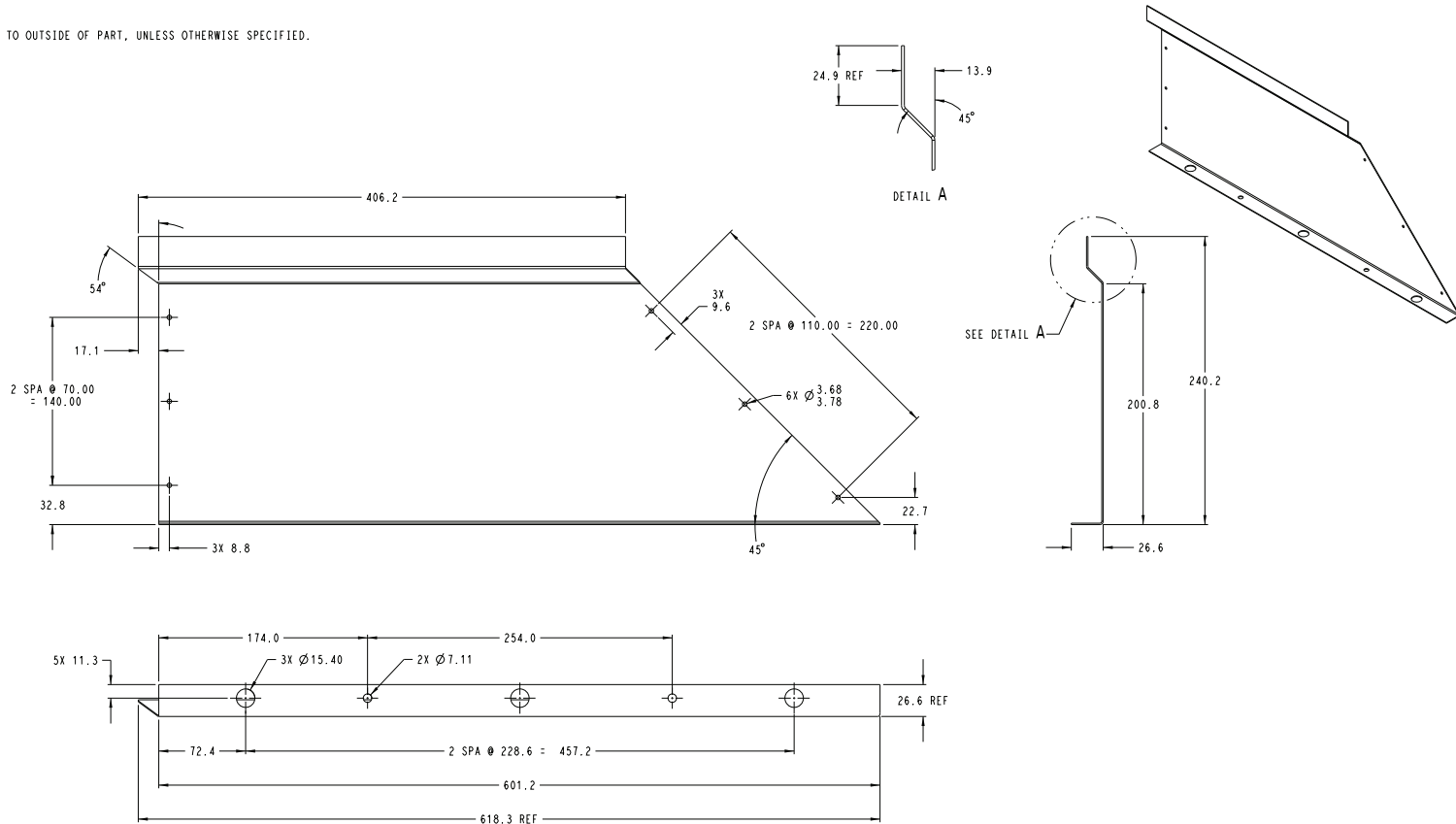


4

Fig. 3 — Duct Adapter Dimensions, Item 3

NOTE:

1. ALL DIMENSIONS ARE TO OUTSIDE OF PART, UNLESS OTHERWISE SPECIFIED.



DRAWING NUMBER	REV	ITR
40RU000475	-	4
SHEET 1 OF 1		

Fig. 4 — Duct Adapter Dimensions, Item 4

5

## PRE-INSTALLATION

### Complete Pre-Installation Checks

Remove accessory packaging and inspect shipment for damage. File claim with shipping company if accessory is damaged or incomplete.

### Check Unit Clearance

Provide sufficient space for airflow clearance and servicing accessory after it is mounted on unit. The base unit minimum clearances of 2-1/2 ft for front and sides of unit and 3 in. for rear of unit also apply to the duct adapters.

## INSTALLATION

### Assemble and Secure Duct Adapter

Reference Fig. 5 for duct assembly.

1. Discard duct flanges shipped with unit. Save screws for securing the duct transition to the fan's discharge outlet.
  - a. Duct flanges are factory supplied; they are shipped inside the unit attached to the hairpin end of the coil tube sheet for field installation.
2. Secure Item 1 to Item 3 using 3 of the screws provided in the duct transition kit.
3. Secure Item 4 to Item 3 using 3 of the screws provided in the duct transition kit.
4. Secure Item 2 to Items 1 and 4 using 6 of the screws provided in the duct transition kit.
5. Secure duct transition assembly to the discharge outlet as shown in Fig. 6, or Fig. 7 for units with an electric heater. Using the screws shipped in the unit for the standard duct flanges.

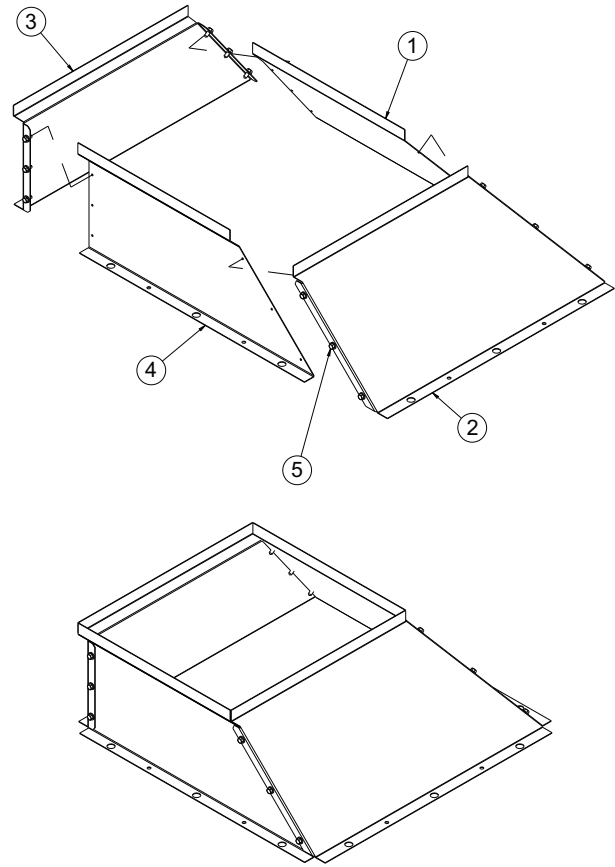


Fig. 5 — Duct Adapter Assembly

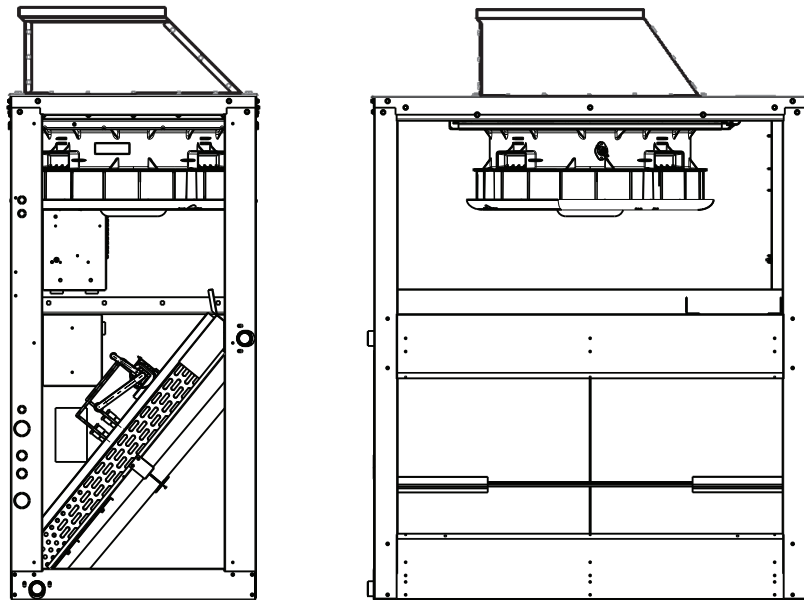
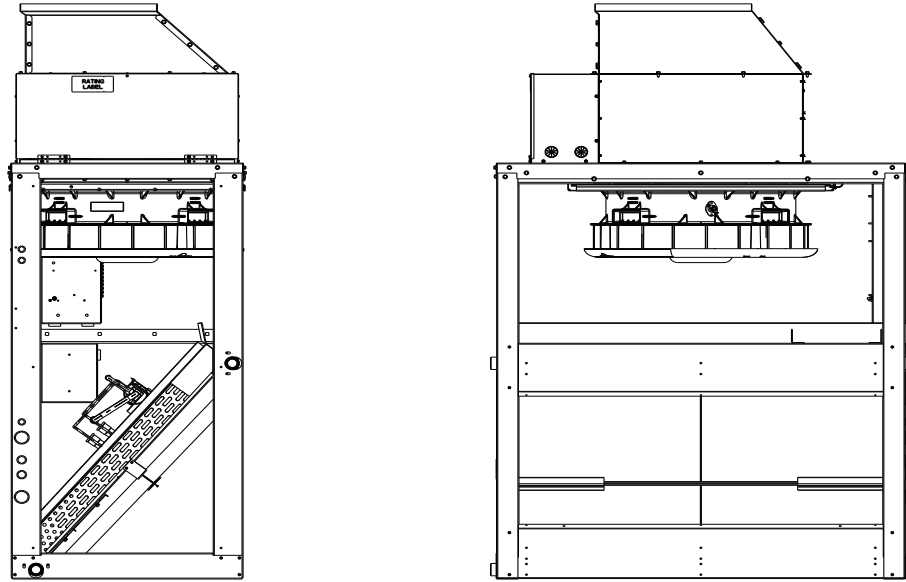
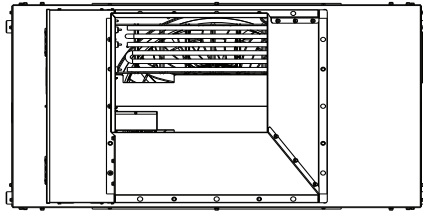


Fig. 6 — Duct Adapter on Unit



**Fig. 7 — Duct Adapter on Unit with Electric Heater**

## Connecting Adapter to Ductwork

After the duct transition assembly is installed on discharge outlet, connect the assembly to the supply duct using a field-supplied canvas connection to prevent vibration. It is important that this connection be properly fabricated to prevent high air friction losses and noises.

## START-UP

1. Turn on unit power.
2. Set fan switch at ON position to energize indoor air fan.
3. Check output at air outlet(s).

## SERVICE

### CAUTION

Before servicing the unit duct adapter, shut off and tag the steam and hot water valves.

See Cautions under Safety Considerations section on page 1.

Disconnect power to base unit to avoid electrical shock when servicing.

## Cleaning Duct Adapter

Refer to base unit instructions regarding unit panel removal for duct adapter access. Clean duct adapter with a stiff brush, vacuum cleaner, or compressed air. Procedure and precautions for cleaning duct adapter are similar to those regarding cleaning of evaporator coil as described in base unit instructions.