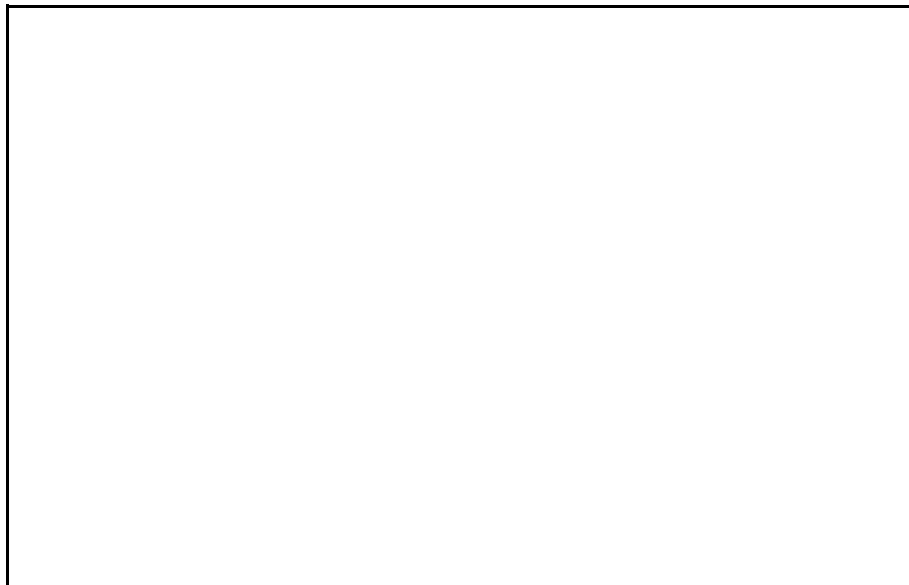




48FC 20-30 WEATHERMAKER® SERIES WITH ECOBLUE™ TECHNOLOGY SINGLE PACKAGE ROOFTOP GAS HEAT/ELECTRIC COOLING UNITS



- PERFORMANCE DATA**
- CERTIFIED DIMENSION PRINTS**
- CERTIFIED ROOF CURB DETAILS**



JOB NAME:		LOCATION:	
BUYER:		BUYER PO #:	CARRIER#:
UNIT NUMBER:		MODEL NUMBER:	
PERFORMANCE DATA CERTIFIED BY:			

DESCRIPTION

48FC 20-30 size units are single-packaged electric cooling, gas heating units that are pre-wired and pre-charged with Puron® (R-410A) HFC refrigerant. The units are factory tested in both heating and cooling modes. These units meet the upcoming DOE-2023 (Department of Energy) and ASHRAE (American Society of Heating, Refrigerating, and Air-Conditioning Engineers) 90.1 IEER minimum efficiency requirements. Models use Carrier's leading Ecoblue™ Vane Axial Indoor Fan System with built in speed control and no fan belts or pullies. All models have two-stage cooling and single circuit full active evaporator coil design to provide maximum efficiency and comfort control.

FEATURES

Standard Base Unit

- Puron (R-410A) HFC refrigerant
- IEERs up to 14.5
- Exceeds current DOE IEER efficiencies while meeting DOE's new stringent 2023 IEER efficiency requirements
- 2023 ASHRAE 90.1, and IECC - IEER energy compliant
- Rated in accordance with AHRI Standard 340/360
- Designed in accordance with Underwriters Laboratories standard 60335-2-40
- Listed by ETL and ETL-Canada
- Two-stage/single-circuit cooling capacity control on all models
- Non-corrosive composite sloping design; side or center drain condensate pan. Meets ASHRAE Standard 62
- Cooling operating range up to 125°F (52°C), and down to 40°F (4°C) standard. See factory installed options and field installed accessories for lower operating range capabilities
- Dedicated vertical and horizontal air flow models available ordered as factory option. No special kits required
- Two-inch disposable return air filters on slide out track. Four inch track available as field installed accessory
- Thru-the-bottom power and gas entry capability
- Single point gas and electric connections
- 24-volt control circuit protected with resettable circuit breaker
- Direct Drive - EcoBlue™ indoor fan system uses vane axial fan design and electronically commutated motor:
 - Shall have inherent automatic-reset thermal overload protection
 - Shall require no fan/motor belts for operation, adjustments, and/or initial fan speed setup
 - Shall be internally protected from electrical phase reversal and loss
 - Shall have slow ramp up to speed control capabilities to help reduce sound and comfort issues
 - Shall be a slide-out design with simple screw removal
 - Shall not require VFD fan speed control
- Permanently lubricated evaporator-fan motor
- Totally enclosed condenser motors with permanently lubricated bearings

- Low-pressure and high-pressure switches
- Mixed Air Temperature Protection Switch
- Full perimeter base rail with built-in rigging adapters and fork truck slots
- Unit Control Board (UCB) facilitates simple safety circuit troubleshooting and simplified control box arrangement

Cabinet

- Access panels with easy grip handles
- Innovative, easy starting, no-strip screw feature on unit access panels
- Pre-painted exterior panels and primer-coated interior panels tested to 500 hours salt spray protection
- Fully insulated cabinet
- Tool-less filter access door

Refrigerant System

- TXV refrigerant metering device with removable power element on each circuit
- Liquid line filter drier
- Scroll compressors with internal line-break overload protection
- Copper tube, aluminum fin coils with optional corrosion resistant coils.

Gas Heat

- Exclusive IGC anti-cycle protection for gas heat operation. IGC solid-state gas heat exchanger control for on-board diagnostics, anti-cycle protection, LED error code designation, burner control logic and energy saving indoor fan motor delay
- Gas efficiencies up to 81%
- Inducted draft combustion
- Redundant gas valve, with up to two stages of heating
- Flame roll-out safety protector
- Solid-state electronic direct spark ignition system

Standard Limited Parts Warranty

- 15-year gas heat exchanger parts - Stainless Steel
- 10-year gas heat exchanger parts - Aluminized
- 5-year compressor parts
- 3-year SystemVu™ controller
- 1-year parts

PERFORMANCE DATA

Unit Operating Weight _____ lb

Curb Weight _____ lb

COOLING

Gross Total Capacity _____ Btuh

at Condenser Air Temperature _____ °F

Gross Sensible Capacity _____ Btuh

Compressor Power Input _____ kW

Indoor Entering: db _____ °F / wb _____ °F

Airflow _____ CFM External Static Pressure _____ in. wg

Indoor Fan Motor Size _____ HP

Exhaust Fan Motor Size _____ HP

HEATING (GAS)

Heating Capacity:

Stage 1 _____ Btuh

Stage 2 _____ Btuh

Heating Capacity Total _____ Btuh

Stage 1 _____ kW

Stage 2 _____ kW

Heating Capacity Total _____ kW

ELECTRICAL DATA

Power Supply to Unit _____

Volts _____

Phase _____ Hz

Maximum Circuit Amps _____

Maximum Overcurrent Protection _____

SUBMITTAL DATA

Job Name _____

Architect _____

Engineer _____

Contractor _____

Unit Designation _____



Use of the AHRI Certified TM Mark indicates a manufacturer's participation in the program. For verification of certification for individual products, go to www.ahridirectory.org.



FACTORY-INSTALLED OPTIONS

☐ Economizer with DRY BULB Sensing and Barometric Relief

Low Leak Air Dampers —

- Models with W7220 controller meet California Title 24-2016 Section 120.2.i for Fault Detection and Diagnostic (FDD) requirements (EconoMiSer X system).
- Models with SystemVu™ controller meet California Title 24-2016 (Section 120.2) Fault Detection and Diagnostic (FDD) requirements (EconoMiSer 2 system).

☐ Economizer with ENTHALPY Sensing and Barometric Relief

Low Leak Air Dampers —

- Models with W7220 controller meet California Title 24-2016 Section 120.2.i for Fault Detection and Diagnostic (FDD) requirements (EconoMiSer X system).
- Models with SystemVu™ controller meet California Title 24-2016 (Section 120.2) Fault Detection and Diagnostic (FDD) requirements (EconoMiSer 2 system).

☐ Economizer with DRY BULB Sensing and Barometric Relief

ULTRA LOW LEAK Air Dampers —

- Models with W7220 controller meet California Energy Commission Title 24-2016 perspective section 140.4 (damper leakage, etc.), and mandatory section 120.2.i for Fault Detection and Diagnostic controls. Economizers meet ASHRAE 90.1-2016 damper leakage requirements as stated in section 6.5.1.1.4 and Table 6.4.3.4.3, and meet 2016 Fault Detection and Diagnosis requirements in section 6.4.3.12. For outside air, return, and relief air damper leakage requirements economizers meet IECC 2012 section C402.4.5.2 and, IECC 2015 sections C403.2.4.3 and C403.3.3.5 and IECC 2015 section C403.2.4.7 for Fault Detection and Diagnostic requirements.
NOTE: IECC 2015 section C403.2.4.7.1 requires differential return air sensor, which must be ordered separately.
Outside air, return air, and relief air (volume) dampers are AMCA rated.
- Models with SystemVu™ meet California Energy Commission Title 24-2016 perspective section 140.4 (damper leakage, etc.) and mandatory section 120.2.i for Fault Detection and Diagnostic requirements. Economizers meet ASHRAE 90.1-2016 damper leakage requirements as stated in section 6.5.1.1.4 and Table 6.4.3.4.3, and meet 2016 Fault Detection and Diagnosis requirements in section 6.4.3.12.

Economizers meet IECC 2012 section C402.4.5.2 and, IECC 2015 sections C403.2.4.3 and C403.3.3.5 for outside air, return air, and relief air damper leakage requirements and IECC 2015 section C403.2.4.7 for Fault Detection and Diagnostic requirements.

NOTE: IECC 2015 section C403.2.4.7.1 requires differential return air sensor, which must be ordered separately.

Outside air, return air, and relief air (volume) dampers are AMCA rated.

☐ Economizer with ENTHALPY Sensing and Barometric Relief

ULTRA LOW LEAK Air Dampers —

- Models with W7220 controller meet California Energy Commission Title 24-2016 perspective section 140.4 (damper leakage, etc.), and mandatory section 120.2.i for Fault Detection and Diagnostic controls. Economizers meet ASHRAE 90.1-2016 damper leakage requirements as stated in section 6.5.1.1.4 and Table 6.4.3.4.3, and meet 2016 Fault Detection and Diagnosis requirements in section 6.4.3.12. For outside air, return, and relief air damper leakage requirements economizers meet IECC 2012 section C402.4.5.2 and, IECC 2015 sections C403.2.4.3 and C403.3.3.5 and IECC 2015 section C403.2.4.7 for Fault Detection and Diagnostic requirements.
NOTE: IECC 2015 section C403.2.4.7.1 requires differential return air sensor, which must be ordered separately.
Outside air, return air, and relief air (volume) dampers are AMCA rated.
- Models with SystemVu™ meet California Energy Commission Title 24-2016 perspective section 140.4 (damper leakage, etc.) and mandatory section 120.2.i for Fault Detection and Diagnostic requirements. Economizers meet ASHRAE 90.1-2016 damper leakage requirements as stated in section 6.5.1.1.4 and Table 6.4.3.4.3, and meet 2016 Fault Detection and Diagnosis requirements in section 6.4.3.12. Economizers meet IECC 2012 section C402.4.5.2 and, IECC 2015 sections C403.2.4.3 and C403.3.3.5 for outside air, return air, and relief air damper leakage requirements and IECC 2015 section C403.2.4.7 for Fault Detection and Diagnostic requirements.
NOTE: IECC 2015 section C403.2.4.7.1 requires differential return air sensor, which must be ordered separately.
Outside air, return air, and relief air (volume) dampers are AMCA rated.

FACTORY-INSTALLED OPTIONS (CONT)

Standard Base Unit

Factory Options

- ☐ SystemVu™ controls that include:
 - Large full text - multi line display
 - USB Flash Port for data transfer
 - Built in i-Vu®, CCN and BACnet¹
 - Refrigerant pressure from display
 - Quick LED Status - Run, Alert, Fault
 - Conventional stat or sensor capabilities
 - Historical component runtime and starts
 - Supply air tempering
 - Equipment Touch™/ System Touch™ compatibility
 - Demand limiting and ZS sensor compatibility
- ☐ Stainless steel gas heat exchanger (includes tubes, vestibule plate and collector box)

1. BACnet is a trademark of ASHRAE.

- ☐ Humidi-MiZer® adaptive dehumidification system
- ☐ Non-powered 115-volt convenience outlet
- ☐ High static evaporator fan motor
- ☐ Return Air smoke detector
- ☐ Supply Air smoke detector
- ☐ Unit mounted CO₂ sensor
- ☐ Condenser coil hail guard — louvered style
- ☐ Special coating protection for evaporator and condenser coils
- ☐ Hinged panels for easy unit access
- ☐ Filter status switch
- ☐ MERV-13, 4-inch return air filters
- ☐ Powered 115-volt convenience outlet
- ☐ Non-fused disconnect switch
- ☐ Phase Monitor/Protection
- ☐ High SCCR protection
- ☐ Centrifugal power exhaust (vertical air flow only)

FIELD-INSTALLED ACCESSORIES

☐ Economizer with DRY BULB Sensing and Barometric Relief

Low Leak Air Dampers —

- Models with W7212 controller provides standard non-diagnostic control. EconoMiSer® IV.
- Models with W7220 controller meet California Title 24-2016 Section 120.2.i for Fault Detection and Diagnostic (FDD) requirements (EconoMiSer X system).
- Models with SystemVu™ controller meet California Title 24-2016 (Section 120.2) Fault Detection and Diagnostic (FDD) requirements (EconoMiSer 2 system).

☐ Economizer with ENTHALPY Sensing and Barometric Relief

Low Leak Air Dampers —

- Models with W7212 controller provides standard non-diagnostic control. EconoMiSer® IV.
- Models with W7220 controller meet California Title 24-2016 Section 120.2.i Fault Detection and Diagnostic (FDD) requirements (EconoMiSer X system).
- Models with SystemVu™ controller meet California Title 24-2016 (Section 120.2) Fault Detection and Diagnostic (FDD) requirements (EconoMiSer 2 system).

☐ Economizer with DRY BULB Sensing and Barometric Relief

ULTRA LOW LEAK Air Dampers —

- Models with W7220 controller meet California Energy Commission Title 24-2016 perspective section 140.4 (damper leakage, etc.), and mandatory section 120.2.i for Fault Detection and Diagnostic controls. Economizers meet ASHRAE 90.1-2016 damper leakage requirements as stated in section 6.5.1.1.4 and Table 6.4.3.4.3, and meet 2016 Fault Detection and Diagnosis requirements in section 6.4.3.12. For outside air, return, and relief air damper leakage requirements economizers meet IECC 2012 section C402.4.5.2 and, IECC 2015 sections C403.2.4.3 and C403.3.3.5 and IECC 2015 section C403.2.4.7 for Fault Detection and Diagnostic requirements.
NOTE: IECC 2015 section C403.2.4.7.1 requires differential return air sensor, which must be ordered separately.
Outside air, return air, and relief air (volume) dampers are AMCA rated.
- Models with SystemVu meet California Energy Commission Title 24-2016 perspective section 140.4 (damper leakage, etc.) and mandatory section 120.2.i for Fault Detection and Diagnostic requirements. Economizers meet ASHRAE 90.1-2016 damper leakage requirements as stated in section 6.5.1.1.4

and Table 6.4.3.4.3, and meet 2016 Fault Detection and Diagnosis requirements in section 6.4.3.12. Economizers meet IECC 2012 section C402.4.5.2 and, IECC 2015 sections C403.2.4.3 and C403.3.3.5 for outside air, return air, and relief air damper leakage requirements and IECC 2015 section C403.2.4.7 for Fault Detection and Diagnostic requirements.

NOTE: IECC 2015 section C403.2.4.7.1 requires differential return air sensor, which must be ordered separately.

Outside air, return air, and relief air (volume) dampers are AMCA rated.

☐ Economizer with ENTHALPY Sensing and Barometric Relief

ULTRA LOW LEAK Air Dampers —

- Models with W7220 controller meet California Energy Commission Title 24-2016 perspective section 140.4 (damper leakage, etc.), and mandatory section 120.2.i for Fault Detection and Diagnostic controls. Economizers meet ASHRAE 90.1-2016 damper leakage requirements as stated in section 6.5.1.1.4 and Table 6.4.3.4.3, and meet 2016 Fault Detection and Diagnosis requirements in section 6.4.3.12. For outside air, return, and relief air damper leakage requirements economizers meet IECC 2012 section C402.4.5.2 and, IECC 2015 sections C403.2.4.3 and C403.3.3.5 and IECC 2015 section C403.2.4.7 for Fault Detection and Diagnostic requirements.
NOTE: IECC 2015 section C403.2.4.7.1 requires differential return air sensor, which must be ordered separately.
Outside air, return air, and relief air (volume) dampers are AMCA rated.
- Models with SystemVu meet California Energy Commission Title 24-2016 perspective section 140.4 (damper leakage, etc.) and mandatory section 120.2.i for Fault Detection and Diagnostic requirements. Economizers meet ASHRAE 90.1-2016 damper leakage requirements as stated in section 6.5.1.1.4 and Table 6.4.3.4.3, and meet 2016 Fault Detection and Diagnosis requirements in section 6.4.3.12. Economizers meet IECC 2012 section C402.4.5.2 and, IECC 2015 sections C403.2.4.3 and C403.3.3.5 for outside air, return air, and relief air damper leakage requirements and IECC 2015 section C403.2.4.7 for Fault Detection and Diagnostic requirements.
NOTE: IECC 2015 section C403.2.4.7.1 requires differential return air sensor, which must be ordered separately.
Outside air, return air, and relief air (volume) dampers are AMCA rated.

FIELD-INSTALLED ACCESSORIES (CONT)

Standard Base Unit

- ☐ Power exhaust — centrifugal fan design
- ☐ Two-position motorized outdoor air damper
- ☐ Manual outside air damper 25%
- ☐ Roof curb — 14 inch (356 mm) tall
- ☐ Roof curb — 24 inch (610 mm) tall
- ☐ Horizontal roof curb adapts to standard base unit and directs airflow horizontally
- ☐ Condenser coil hail guard, louvered style
- ☐ Flue discharge deflector
- ☐ Liquid propane (LP) conversion kit
- ☐ High altitude conversion kit
- ☐ Phase monitor (loss of phase/phase reversal)
- ☐ Winter start kit, down to 25°F (−4°C)
- ☐ Low ambient head pressure controller, down to 0°F (−18°C)*
- ☐ Low ambient head pressure controller, down to −20°F (−29°C)
- ☐ Time Guard II compressor anti-cycle protection
- ☐ Thermostats and Sensors
- ☐ Supply Air Smoke Detection
- ☐ Return Air Smoke Detector

- ☐ Motor status indicator switch
- ☐ Filter status indicator switch
- ☐ Four-inch disposable return air filters on slide out track
- ☐ MERV-8 filter kits
- ☐ MERV-13 filter kits
- ☐ 20-Amp non-powered convenience outlet

Economizer Sensors

- ☐ Single dry bulb temperature sensor
- ☐ Differential dry bulb temperature sensor
- ☐ Single enthalpy sensor
- ☐ Differential enthalpy sensor
- ☐ CO₂ — wall mounted
- ☐ CO₂ — duct mounted
- ☐ CO₂ — unit mounted

Optional Warranties

- ☐ Complete unit parts only, up to 5 years
- ☐ Complete unit parts and labor, up to 5 years

Many other optional warranties are available. See the *Commercial Start-Up and Optional Extended Warranty Price* pages for further information.

UNIT DIMENSION PRINT

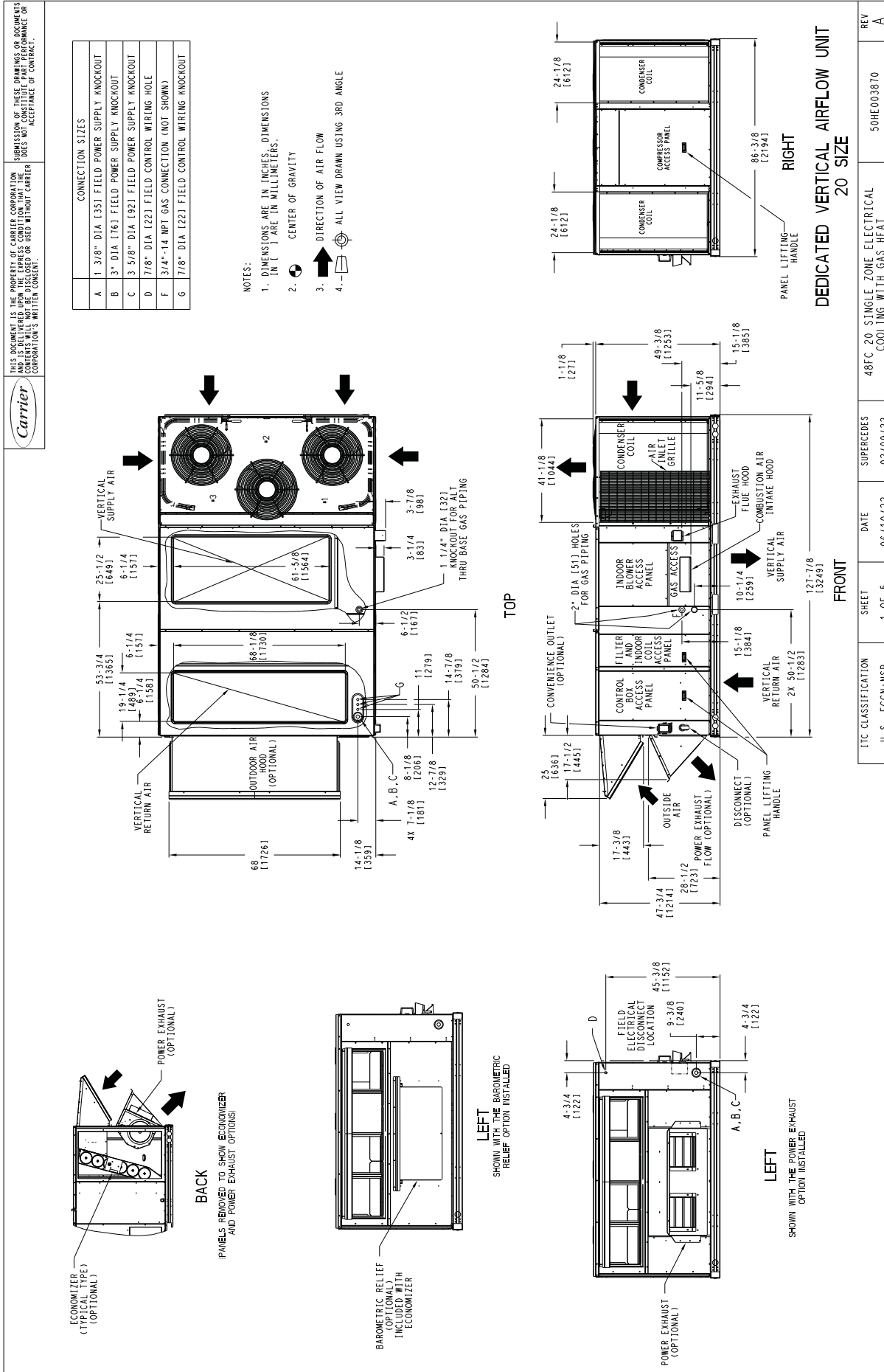


Fig. 1 — 48FC**20 Base Unit Dimensions

UNIT DIMENSION PRINT

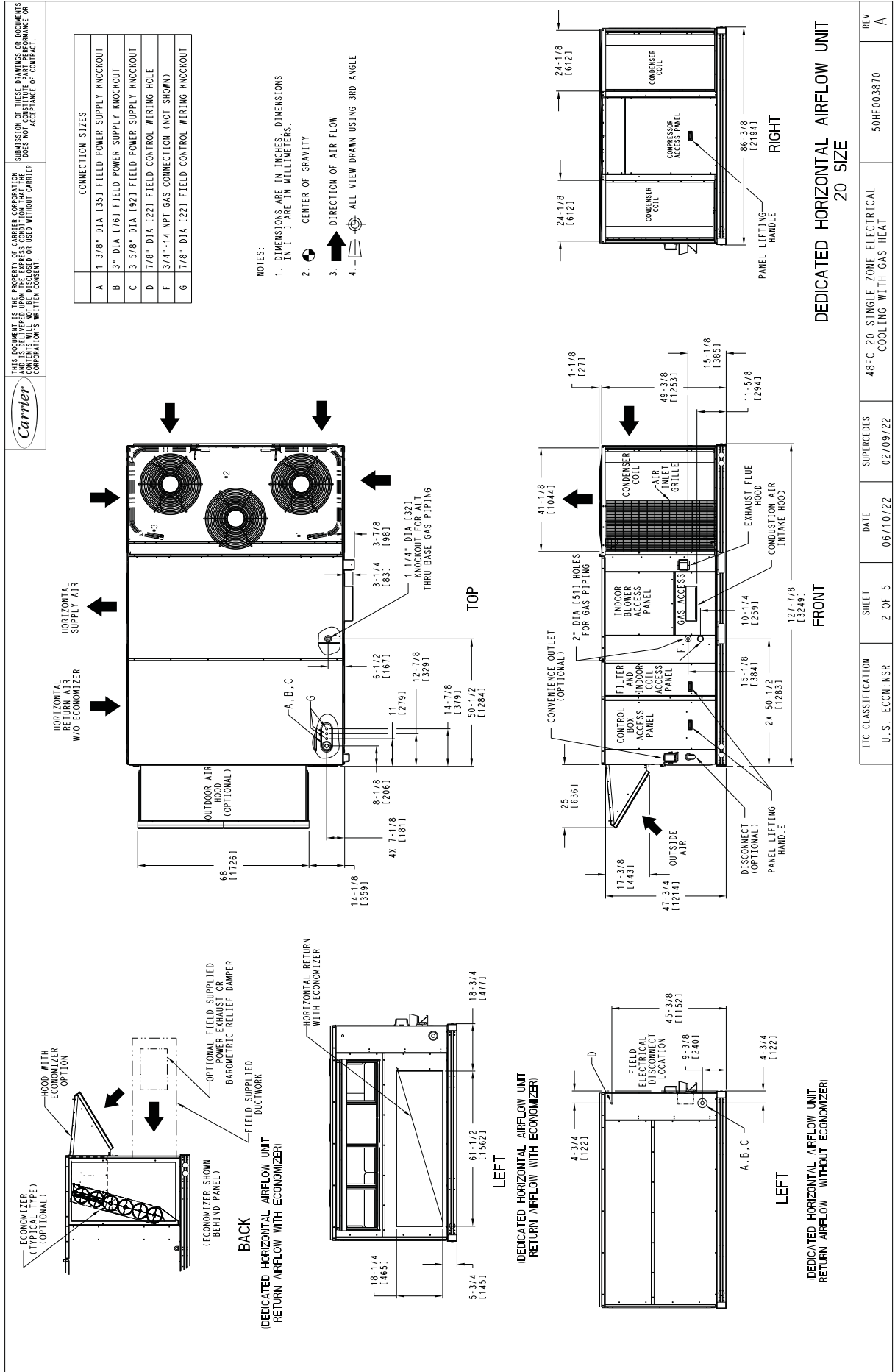


Fig. 1 — 48FC20 Base Unit Dimensions (cont)**

TIC CLASSIFICATION	SHEET	DATE	SUPERCEDES	REV
U.S. ECCN: NSR	2 OF 5	06/10/22	48FC 20 SINGLE ZONE ELECTRICAL COOLING WITH GAS HEAT	A

UNIT DIMENSION PRINT

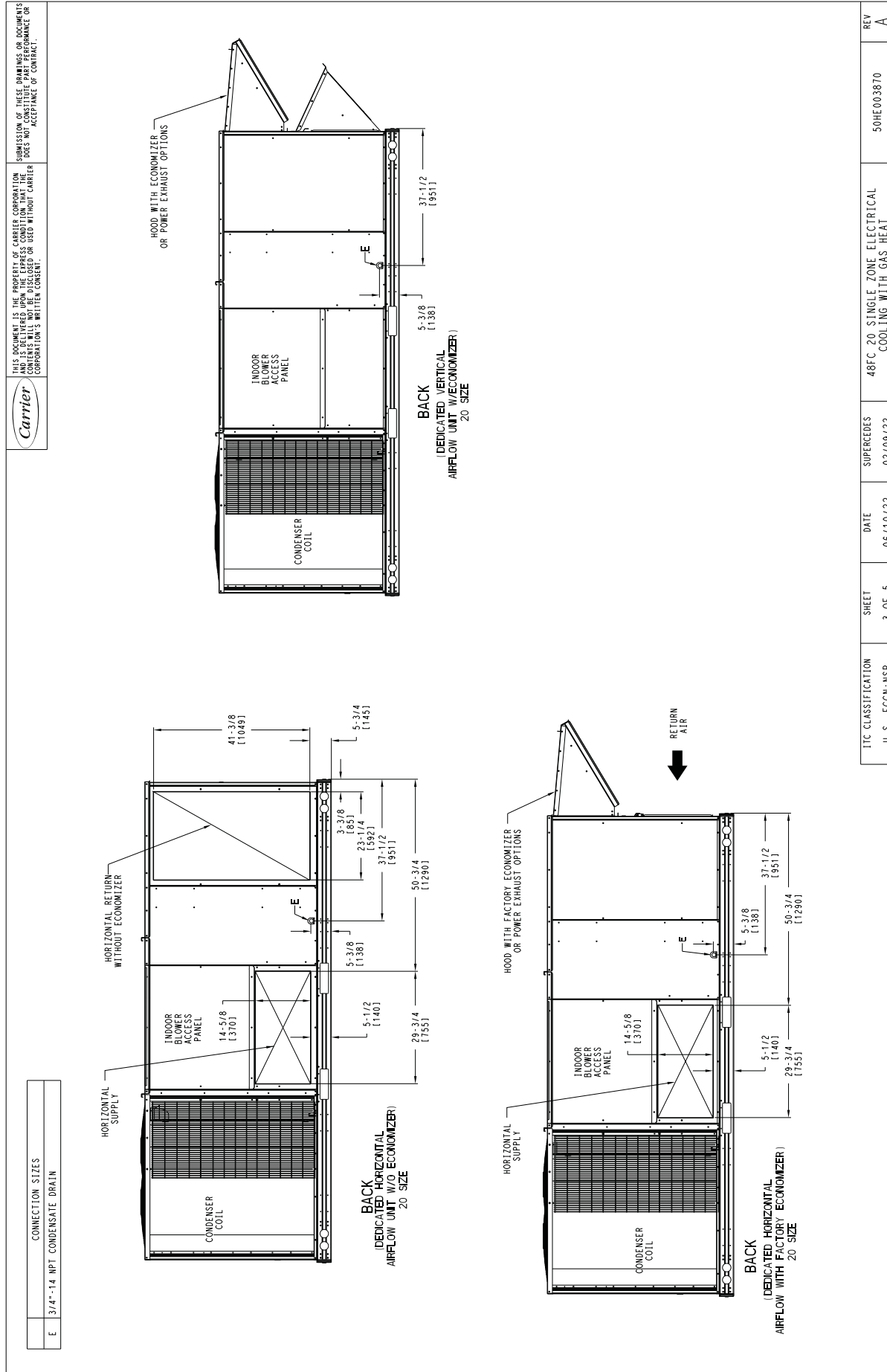


Fig. 1 — 48FC**20 Base Unit Dimensions (cont)

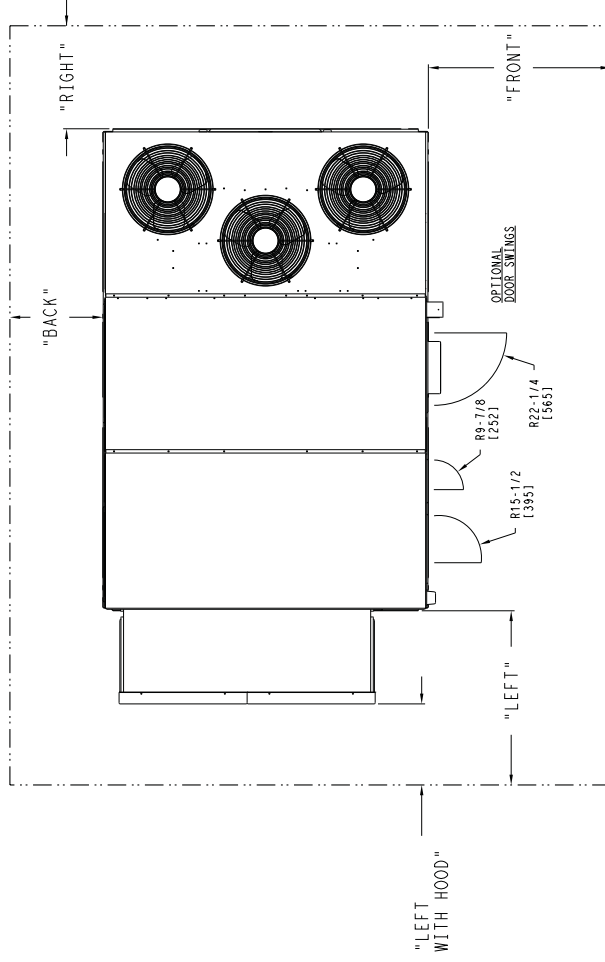
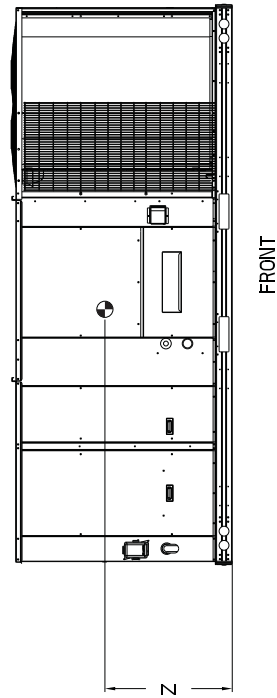
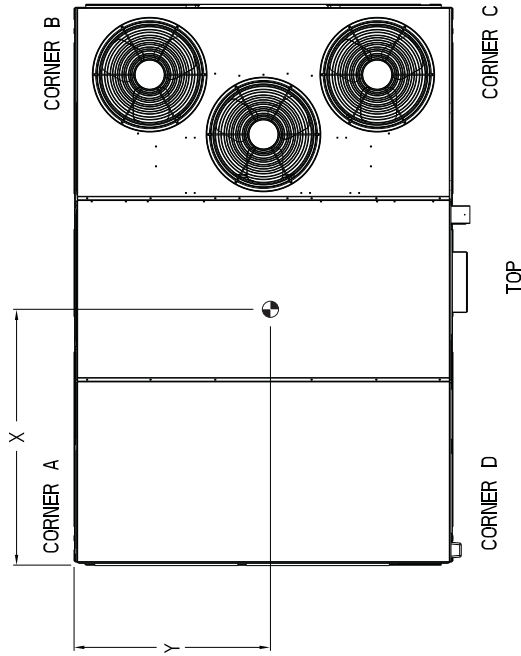
ITC CLASSIFICATION	SHEET	DATE	SUPERCEDES	48FC 20 SINGLE ZONE ELECTRICAL	REV
U.S. ECN: NSR	3 OF 5	06/10/22	02/09/22	COOLING WITH GAS HEAT	A

50HE003870	
------------	--

UNIT DIMENSION PRINT

UNIT	STD UNIT WEIGHT		CORNER WEIGHT (A)		CORNER WEIGHT (B)		CORNER WEIGHT (C)		CORNER WEIGHT (D)		C.G.	
	LBS.	KG.	LBS.	KG.	LBS.	KG.	LBS.	KG.	LBS.	KG.	X	Y
48FC20	1800	816	383	174	479	217	521	236	417	189	71 [1803]	45 [1143]
											16 1/2 [419]	Z

* STANDARD UNIT WEIGHT IS WITH LOW GAS HEAT AND WITHOUT PACKAGING.
FOR OTHER OPTIONS AND ACCESSORIES, REFER TO THE PRODUCT DATA CATALOG.



NOTES:

1. CLEARANCE ABOVE THE UNIT TO BE 72"
2. FOR ALL MINIMUM CLEARANCES LOCAL CODES OR JURISDICTIONS MAY PREVAIL.

CLEARANCE		SERVICE WITH:		SERVICE WITH:		OPERATING	
SURFACE		CONDUCTIVE BARRIER		NONCONDUCTIVE BARRIER		CLEARANCE	
FRONT		48 [1219mm]		36 [914mm]		18 [457mm]	
LEFT		48 [1219mm]		42 [1067mm]		18 [457mm]	
BACK		42 [1067mm]		36 [914mm]		18 [457mm]	
LEFT WITH HOOD		36 [914mm]		36 [914mm]		18 [457mm]	
RIGHT		36 [914mm]		36 [914mm]		18 [457mm]	
TOP		72 [1829mm]		72 [1829mm]		72 [1829mm]	
SUPERCEDES		48FC 20 SINGLE ZONE ELECTRICAL COOLING WITH GAS HEAT		50HE003870		REV A	
U.S. ECCN: NSR		DATE		SHEET		REV	
		06/10/22		4 OF 5			

Fig. 1 — 48FC**20 Base Unit Dimensions (cont)

UNIT DIMENSION PRINT

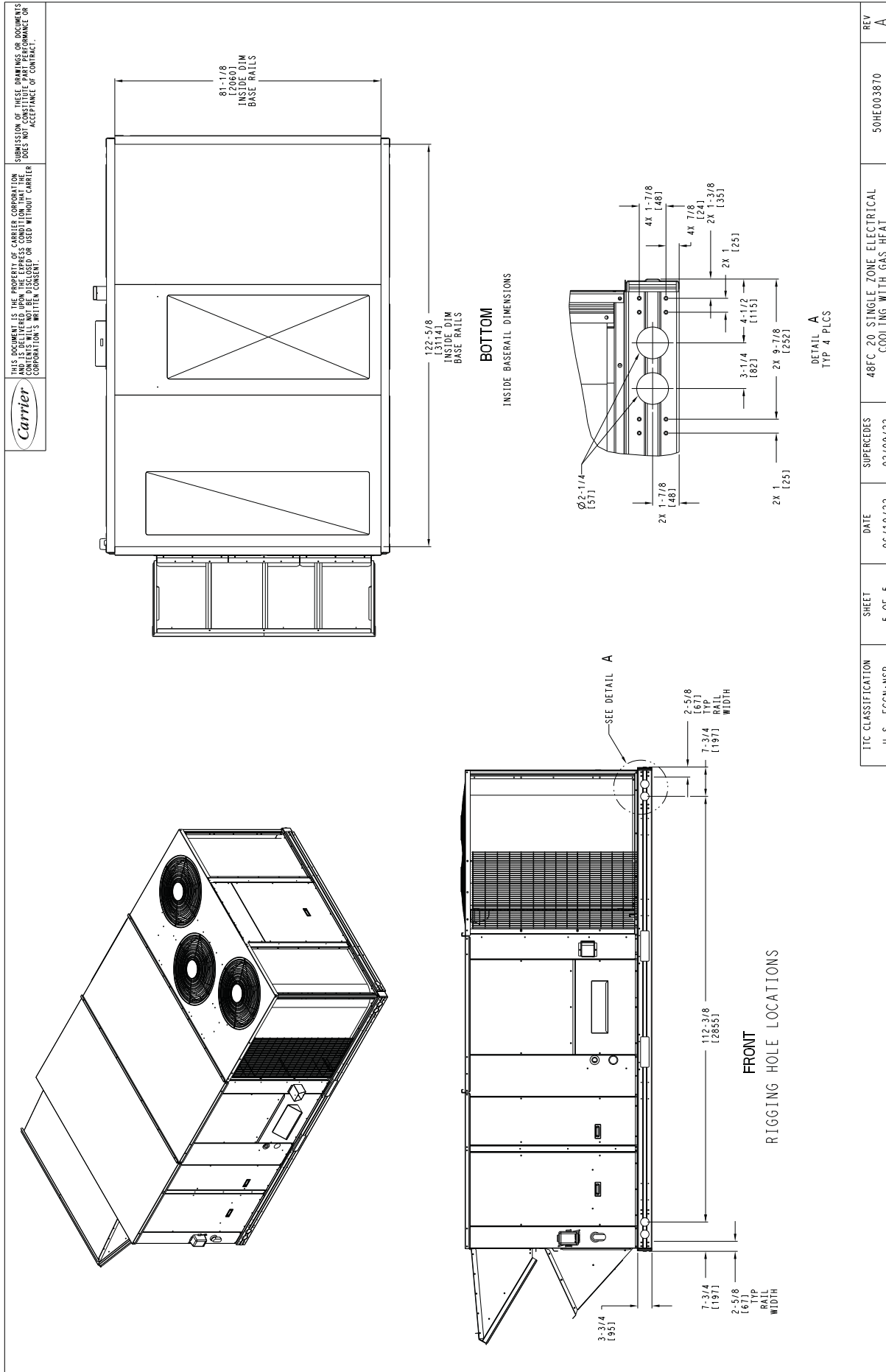


Fig. 1 — 48FC**20 Base Unit Dimensions (cont)

I/T CLASSIFICATION	SHEET	DATE	SUPERCEDES	48FC 20 SINGLE ZONE ELECTRICAL COOLING WITH GAS HEAT	REV
U.S. ECCN-NSR	5 OF 5	06/10/22	02/09/22	50HE003870	A

Carrier

THIS DOCUMENT IS THE PROPERTY OF CARRIER CORPORATION AND IS DELIVERED UPON THE EXPRESS CONDITION THAT THE CONTENTS WILL NOT BE DISCLOSED OR USED WITHOUT CARRIER CORPORATION'S WRITTEN CONSENT.

SUBMISSION OF THESE DRAWINGS OR DOCUMENTS DOES NOT CONSTITUTE PART PERFORMANCE OR ACCEPTANCE OF CONTRACT.



Fig. 2 — 48FC24-28 Base Unit Dimensions**

ITC CLASSIFICATION	SHEET	DATE	SUPERCEDES	48FC 24, 28 SINGLE ZONE ELECTRICAL COOLING WITH GAS HEAT	REV
11 S ECFN-NSP	1 OF 5	06/10/02	02/10/02		A

UNIT DIMENSION PRINT

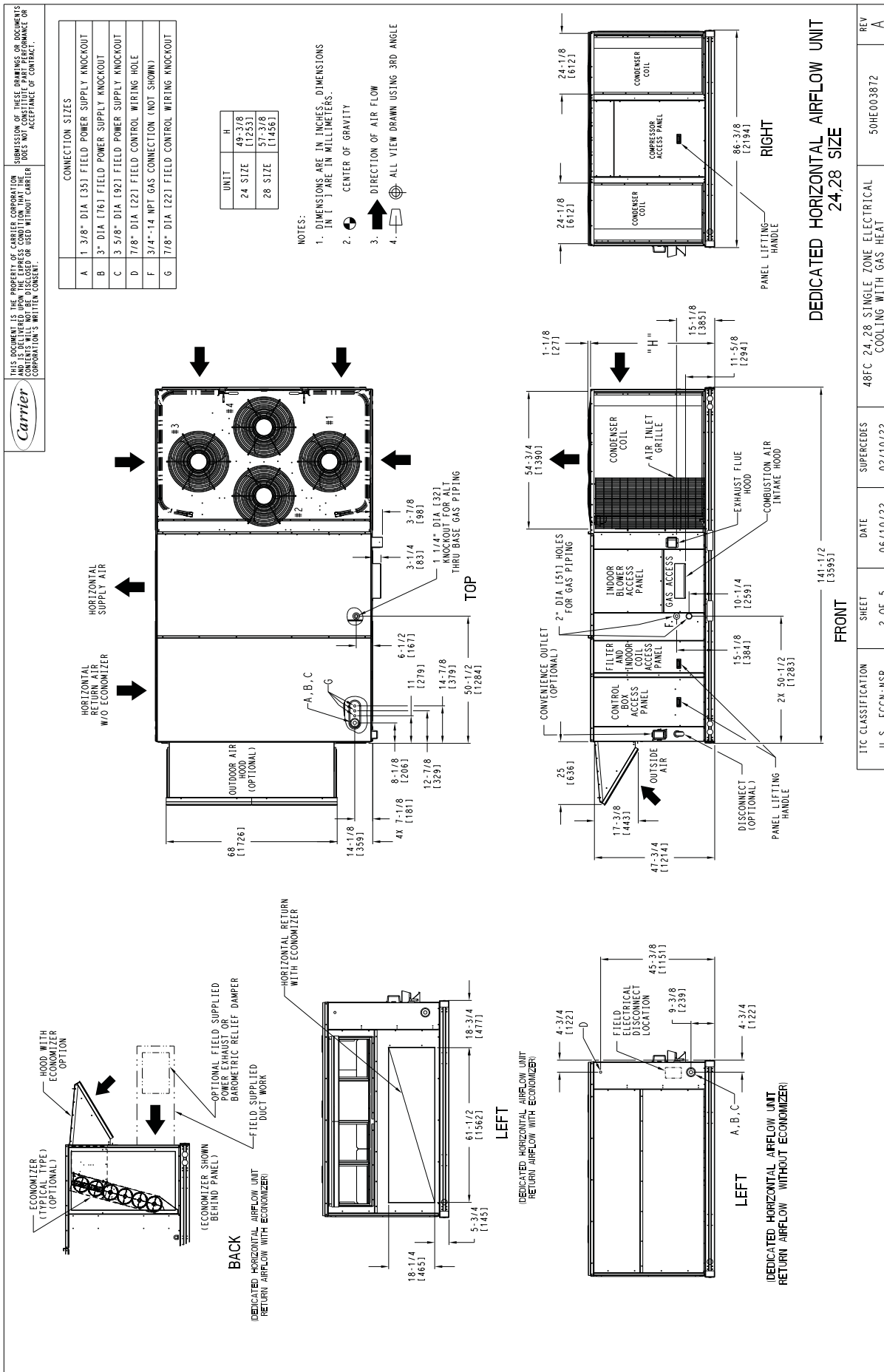


Fig. 2 — 48FC**24-28 Base Unit Dimensions (cont)

UNIT DIMENSION PRINT

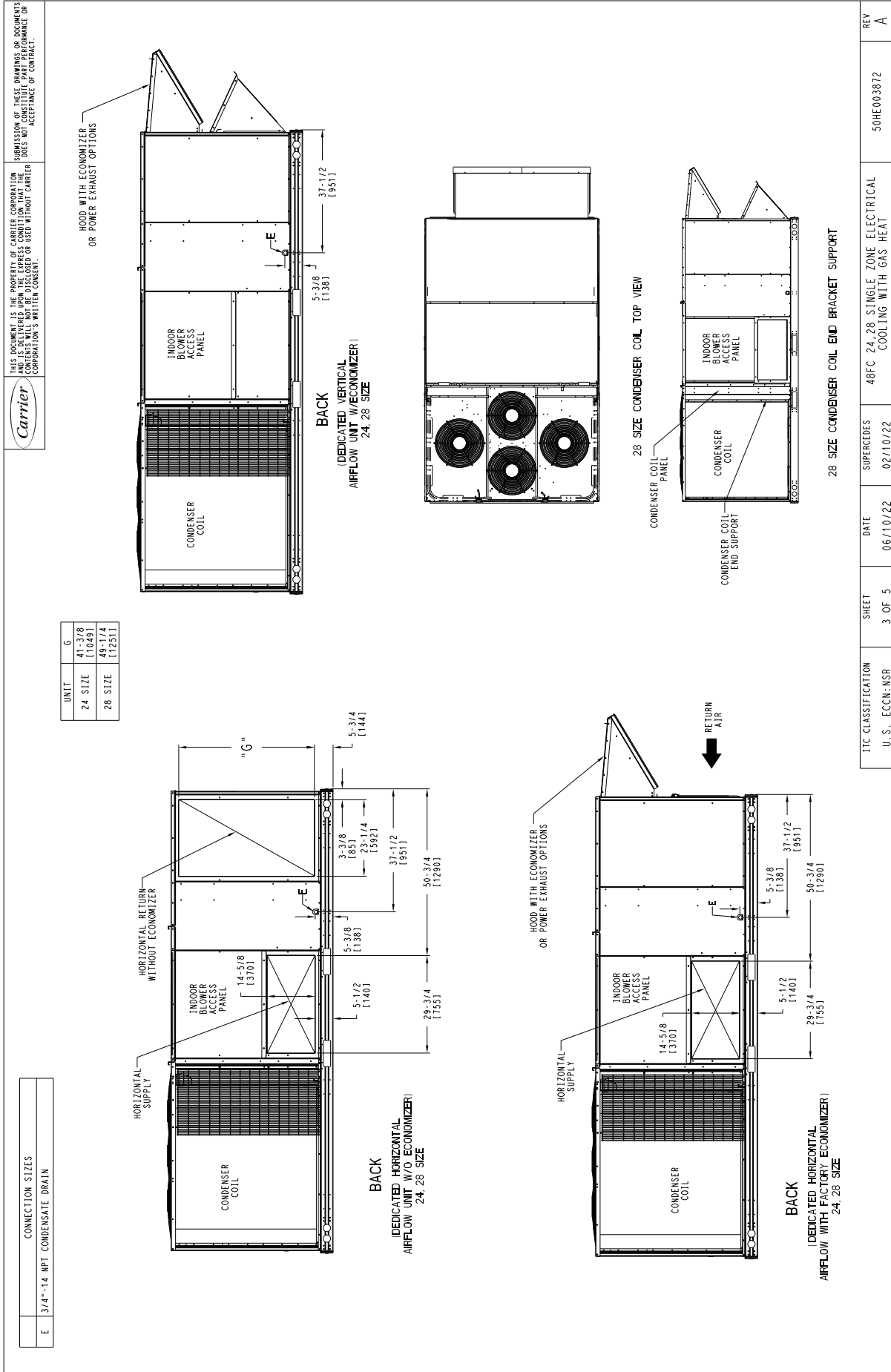


Fig. 2 — 48FC24-28 Base Unit Dimensions (cont)**

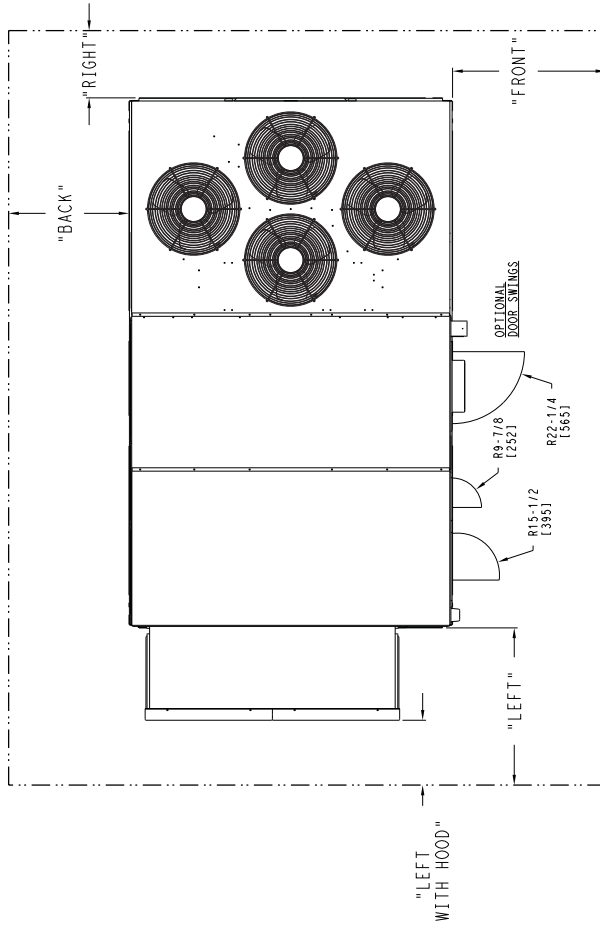
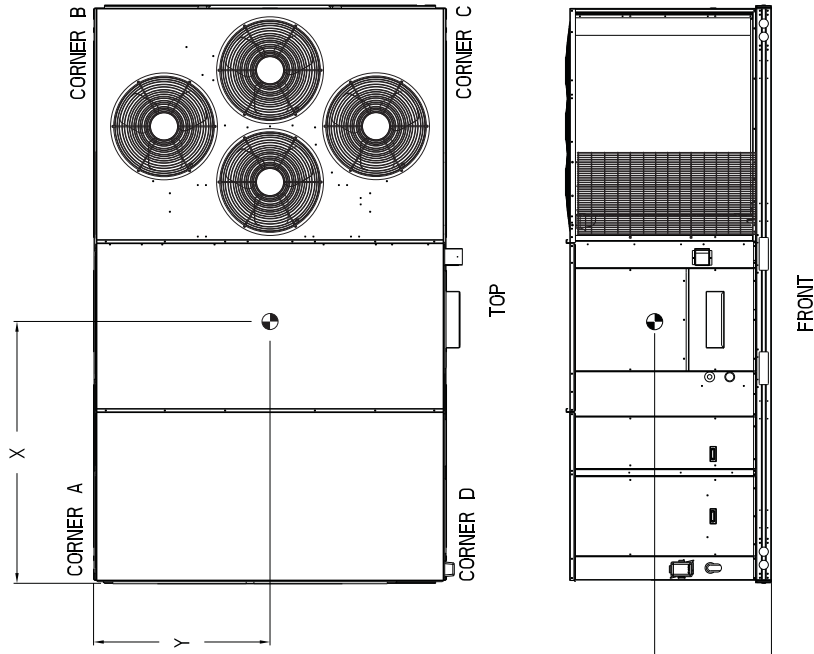
UNIT DIMENSION PRINT

THIS DOCUMENT IS THE PROPERTY OF CARRIER CORPORATION AND IS LOANED TO YOUR OFFICE FOR YOUR INFORMATION ONLY. IT IS NOT TO BE REPRODUCED OR COPIED IN ANY MANNER WITHOUT CARRIER CORPORATION'S WRITTEN CONSENT.

THIS DOCUMENT IS THE PROPERTY OF CARRIER CORPORATION AND IS LOANED TO YOUR OFFICE FOR YOUR INFORMATION ONLY. IT IS NOT TO BE REPRODUCED OR COPIED IN ANY MANNER WITHOUT CARRIER CORPORATION'S WRITTEN CONSENT.

UNIT	STD UNIT WEIGHT (A)	CORNER WEIGHT (B)	CORNER WEIGHT (C)	CORNER WEIGHT (D)	C. G.		
	LBS. KG.	LBS. KG.	LBS. KG.	LBS. KG.	X	Y	Z
48FC24	2000 907	429 195	505 229	576 261	489 222	76 1/2 [1943]	46 [1168]
48FC28	2174 986	458 208	583 264	634 288	498 226	79 1/4 [2013]	45 [1143]
							19 [483]

* STANDARD UNIT WEIGHT IS WITH LOW GAS HEAT AND WITHOUT PACKAGING.
FOR OTHER OPTIONS AND ACCESSORIES, REFER TO THE PRODUCT DATA CATALOG.



NOTES:

1. CLEARANCE ABOVE THE UNIT TO BE 72"
2. FOR ALL MINIMUM CLEARANCES LOCAL CODES OR JURISDICTIONS MAY PREVAIL.

SURFACE		CLEARANCE		OPERATING	
FRONT		SERVICE WITH CONDUCTIVE BARRIER		SERVICE WITH NONCONDUCTIVE BARRIER	
LEFT		48 [1219mm]	36 [914mm]	42 [1067mm]	18 [457mm]
BACK		42 [1067mm]	36 [914mm]	36 [914mm]	18 [457mm]
LEFT WITH HOOD		36 [914mm]	36 [914mm]	36 [914mm]	18 [457mm]
RIGHT		36 [914mm]	36 [914mm]	36 [914mm]	18 [457mm]
TOP		72 [1829mm]	72 [1829mm]	72 [1829mm]	72 [1829mm]
SUPERCEDES		48FC 24, 28 SINGLE ZONE ELECTRICAL COOLING WITH GAS HEAT		50HE003872	
U.S. ECCN: NSR		SHEET 4 OF 5		DATE 06/10/22	
REV		A			

Fig. 2 — 48FC**24-28 Base Unit Dimensions (cont)

UNIT DIMENSION PRINT

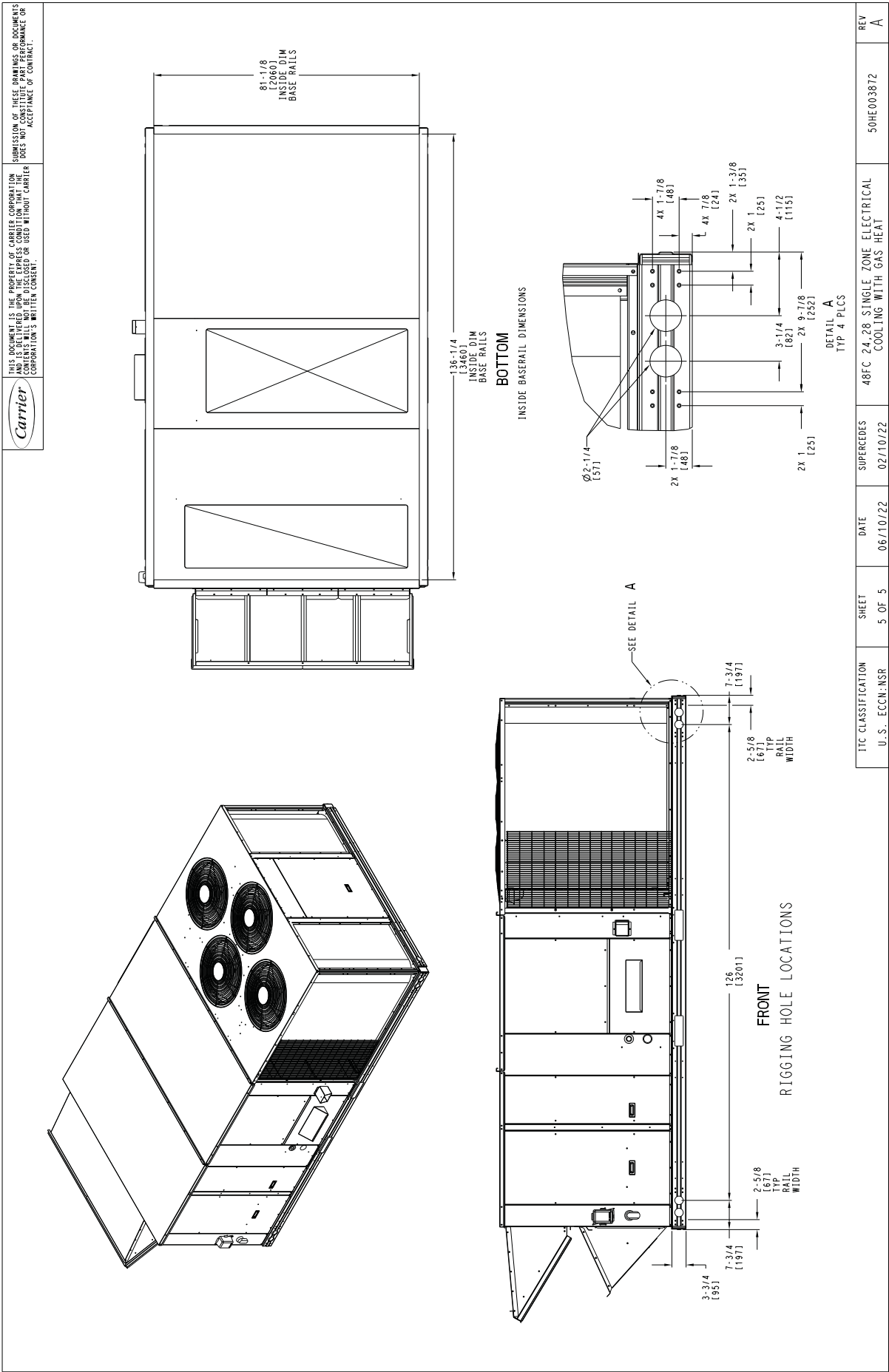


Fig. 2 — 48FC**24-28 Base Unit Dimensions (cont)

UNIT DIMENSION PRINT

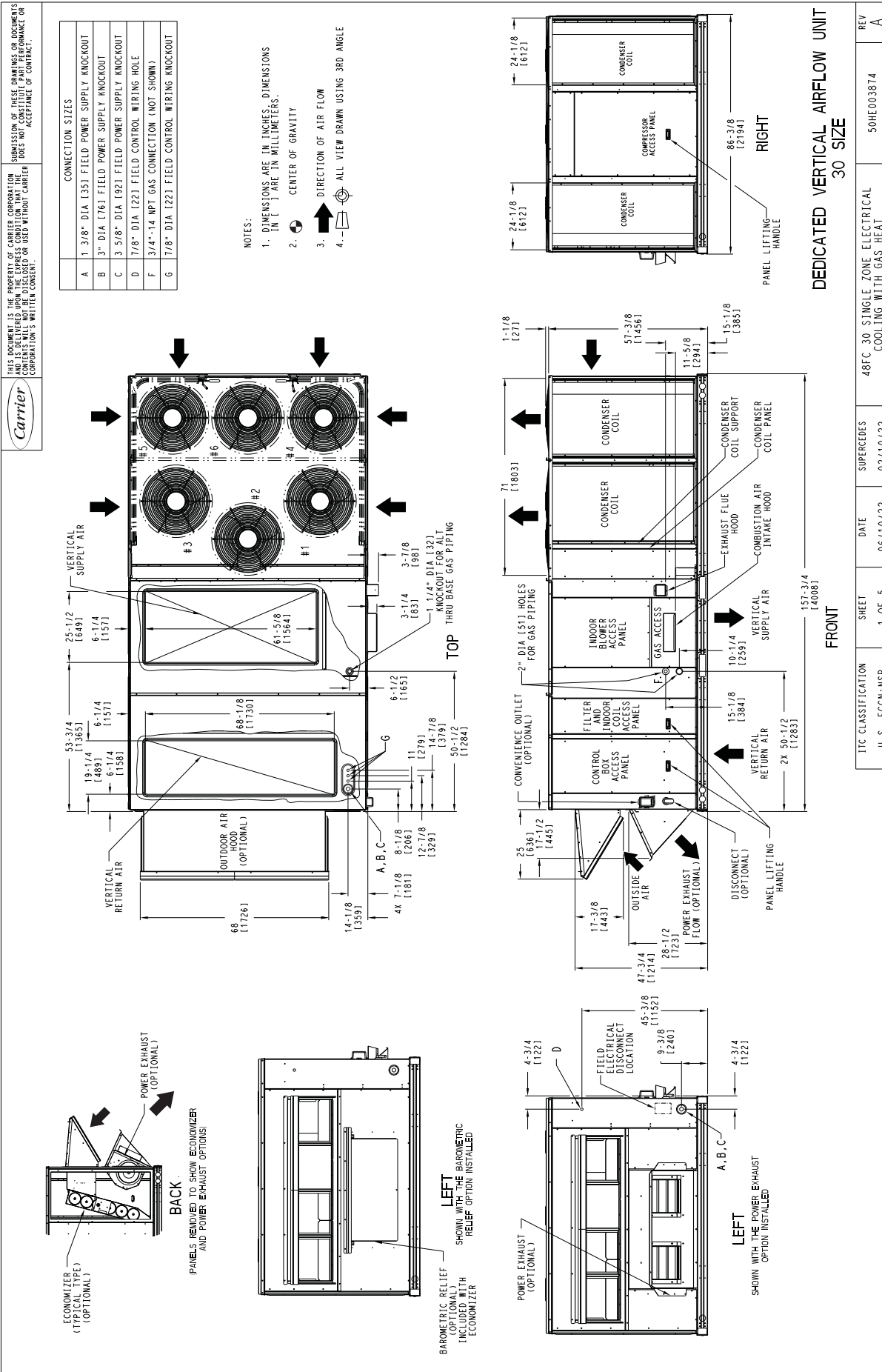


Fig. 3 — 48FC**30 Base Unit Dimensions

CARRIER

THIS DOCUMENT IS THE PROPERTY OF CARRIER CORPORATION. IT IS LOANED TO YOU FOR YOUR CONSIDERATION ONLY. IT AND ITS CONTENTS WILL NOT BE DISCLOSED OR USED WITHOUT CARRIER CORPORATION'S WRITTEN CONSENT.

SUBMISSION OF THESE DRAWINGS OR DOCUMENTS TO ANY OTHER PARTY WITHOUT THE WRITTEN PERMISSION OF CARRIER CORPORATION IS ACCEPTANCE OF CONTRACT.

CONNECTION SIZES	
A	1 3/8" DIA [35] FIELD POWER SUPPLY KNOCKOUT
B	3" DIA [76] FIELD POWER SUPPLY KNOCKOUT
C	3 5/8" DIA [92] FIELD POWER SUPPLY KNOCKOUT
D	7/8" DIA [22] FIELD CONTROL WIRING HOLE
F	3/4"-14 NPT GAS CONNECTION (NOT SHOWN)
G	7/8" DIA [22] FIELD CONTROL WIRING KNOCKOUT

NOTES:

1. DIMENSIONS ARE IN INCHES. DIMENSIONS IN [] ARE IN MILLIMETERS.
2. CENTER OF GRAVITY
3. DIRECTION OF AIR FLOW
4. ALL VIEW DRAWN USING 3RD ANGLE

HORIZONTAL RETURN AIR W/O ECONOMIZER

HORIZONTAL SUPPLY AIR

TOP

FRONT

BACK

LEFT

DEDICATED HORIZONTAL AIRFLOW UNIT RETURN AIRFLOW WITH ECONOMIZER

DEDICATED HORIZONTAL AIRFLOW UNIT RETURN AIRFLOW WITHOUT ECONOMIZER

RIGHT

30 SIZE

DEDICATED HORIZONTAL AIRFLOW UNIT

Fig. 3 — 48FC30 Base Unit Dimensions (cont)**

UNIT DIMENSION PRINT

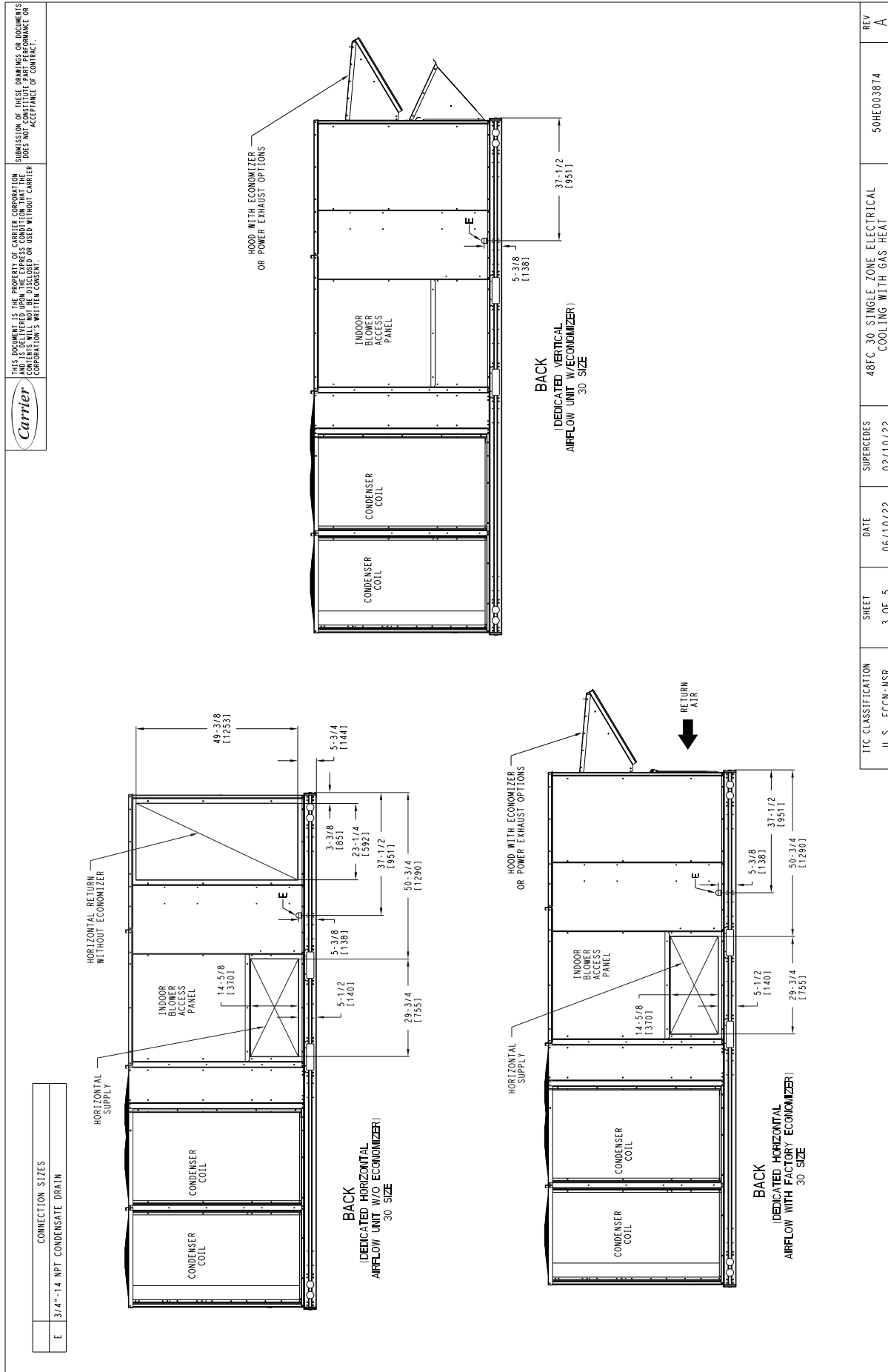


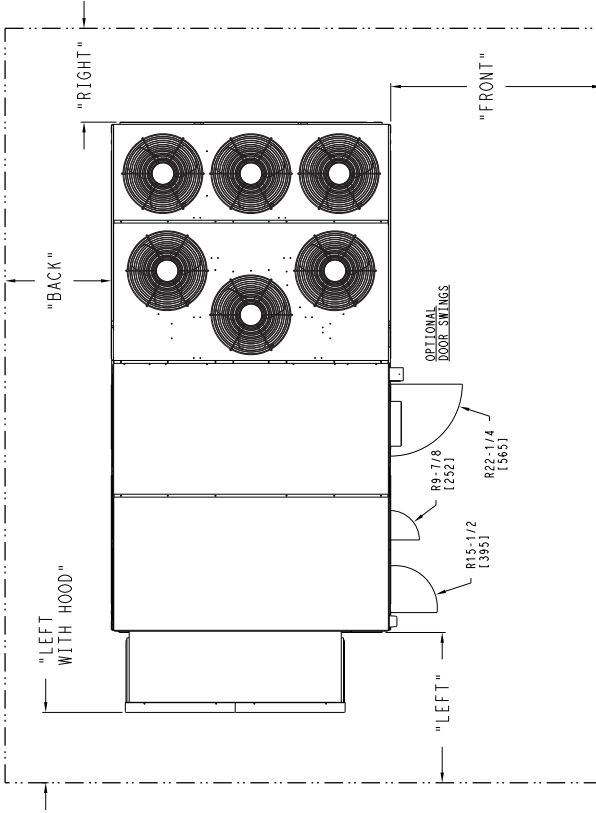
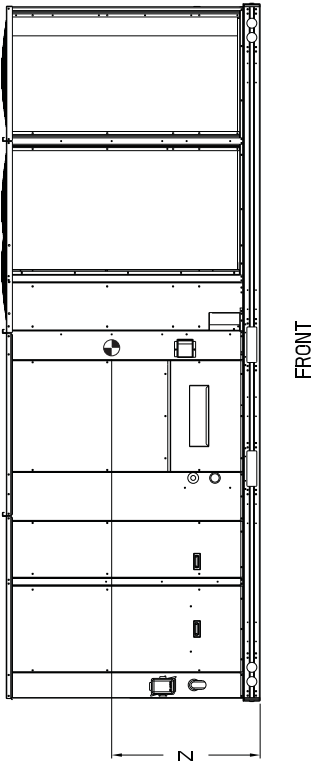
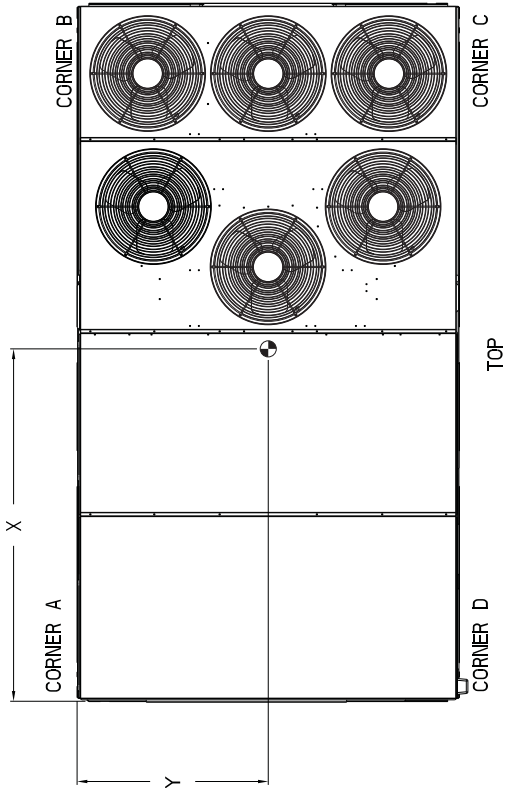
Fig. 3 — 48FC**30 Base Unit Dimensions (cont)

ITC CLASSIFICATION	SHEET	DATE	SUPERCEDES	48FC 30 SINGLE ZONE ELECTRICAL COOLING WITH GAS HEAT	REV
U.S. ECCN:NSR	3 OF 5	06/10/22	02/10/22	50HE003874	A

UNIT DIMENSION PRINT

UNIT	STD UNIT		CORNER		CORNER		CORNER		CORNER		C.G.	
	WEIGHT (A)	WEIGHT (B)	WEIGHT (C)	WEIGHT (D)	WEIGHT (E)	WEIGHT (F)	WEIGHT (G)	WEIGHT (H)	WEIGHT (I)	WEIGHT (J)	WEIGHT (K)	WEIGHT (L)
48FC30	2351	1066	529	240	651	295	645	293	525	238	87	12210
											43	11092
											19	1483

* STANDARD UNIT WEIGHT IS WITH LOW GAS HEAT AND WITHOUT PACKAGING.
FOR OTHER OPTIONS AND ACCESSORIES, REFER TO THE PRODUCT DATA CATALOG.



- NOTES:
1. CLEARANCE ABOVE THE UNIT TO BE 72"
 2. FOR ALL MINIMUM CLEARANCES LOCAL CODES OR JURISDICTIONS MAY PREVAIL.

SURFACE	CLEARANCE			OPERATING
	SERVICE WITH CONDUCTIVE BARRIER	SERVICE WITH NONCONDUCTIVE BARRIER	CLEARANCE	
FRONT	48 [1219mm]	36 [914mm]	18 [457mm]	
LEFT	48 [1219mm]	42 [1067mm]	18 [457mm]	
BACK	42 [1067mm]	36 [914mm]	18 [457mm]	
RIGHT	36 [914mm]	36 [914mm]	18 [457mm]	
TOP	72 [1829mm]	72 [1829mm]	72 [1829mm]	
SUPERCEDES	48FC 30 SINGLE ZONE ELECTRICAL COOLING WITH GAS HEAT			REV A

Fig. 3 — 48FC**30 Base Unit Dimensions (cont)

UNIT DIMENSION PRINT

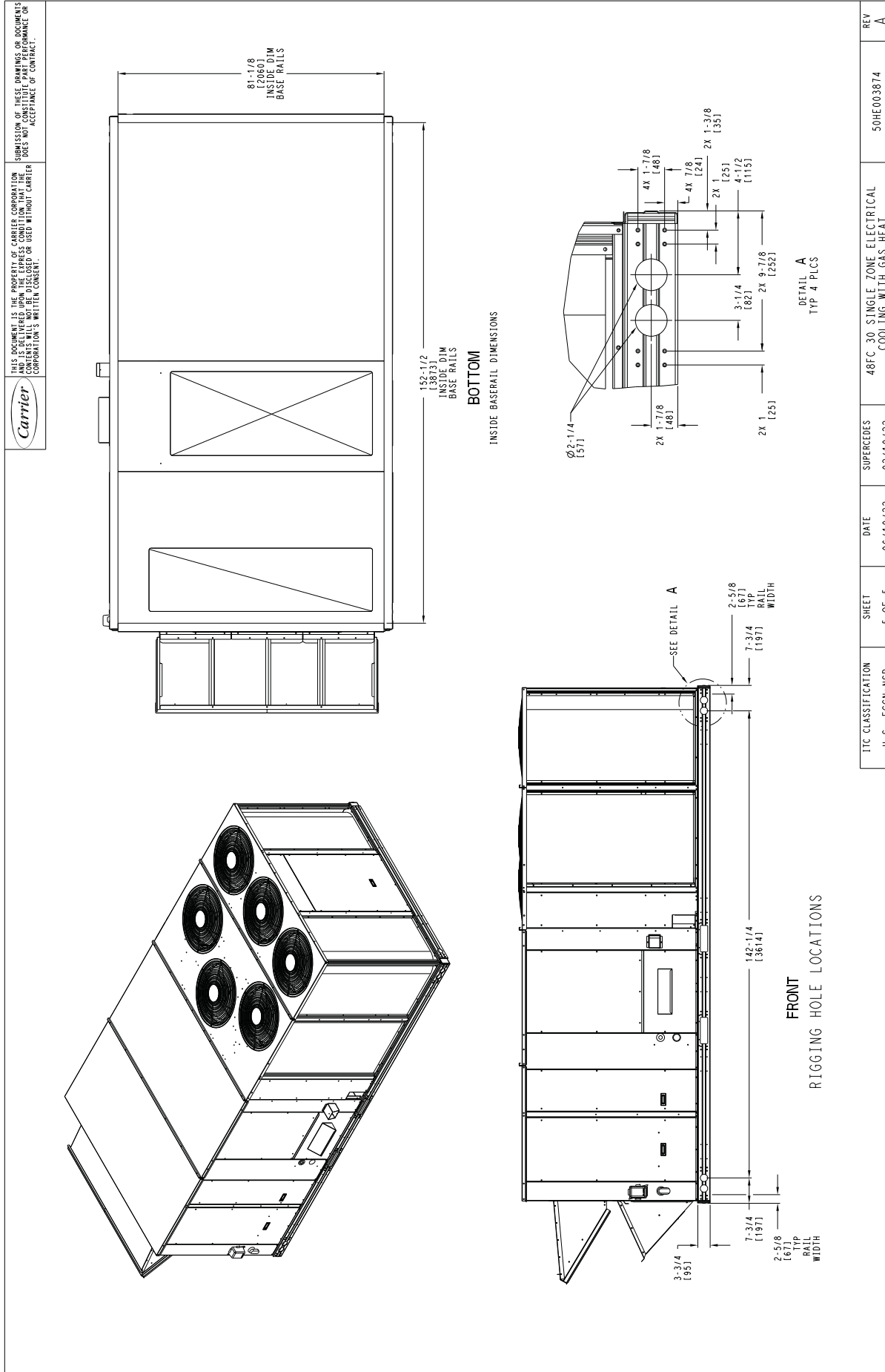
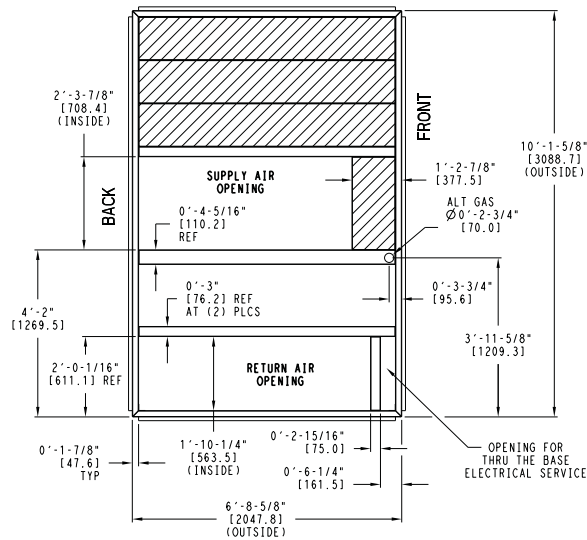


Fig. 3 — 48FC30 Base Unit Dimensions (cont)**

ACCESSORY DIMENSION PRINT

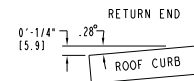
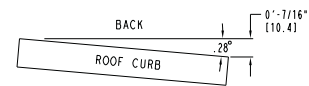
"A"	ROOF CURB ACCESSORY
1'-2" [356.0]	CRRFCURB045A00
2'-0" [610.0]	CRRFCURB046A00



NOTES:

- 1 ROOF CURB ACCESSORY IS SHIPPED UNASSEMBLED.
- 2 DIMENSIONS IN () ARE IN MILLIMETERS.
- 3 ROOF CURB GALVANIZED STEEL.
- 4 ATTACH DUCTWORK TO CURB (FLANGES ON DUCT REST ON CURB)
- 5 SERVICE CLEARANCE 4 ft ON EACH SIDE

➡ DIRECTION OF AIR FLOW



MAX CURB LEVELING TOLERANCES

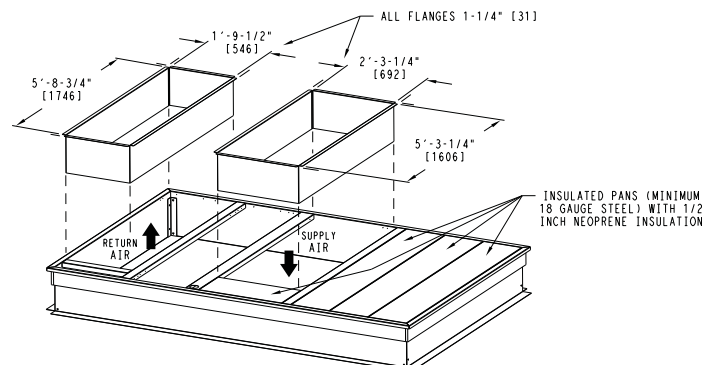
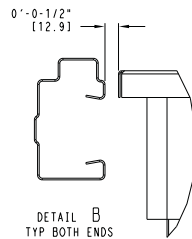
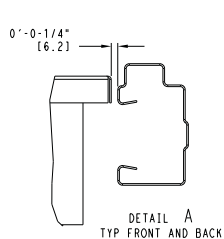
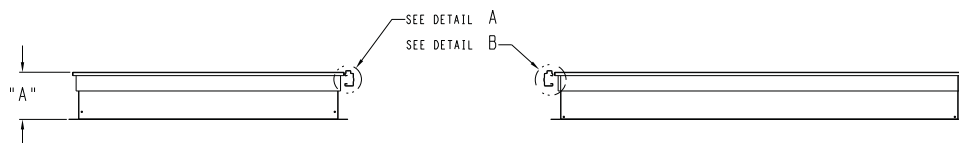
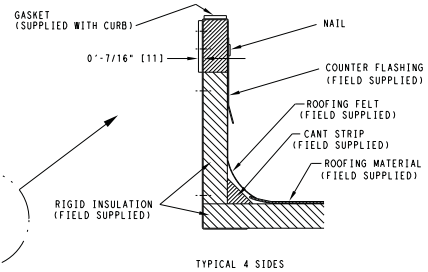
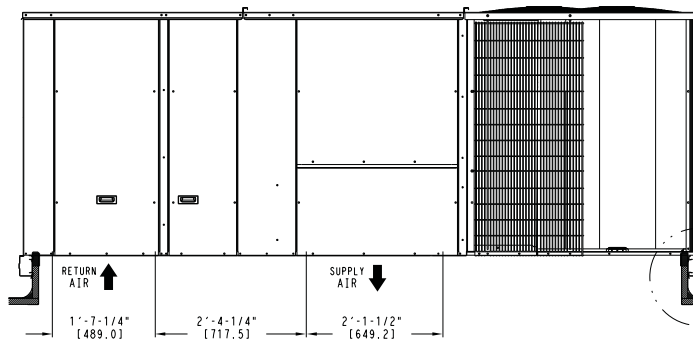
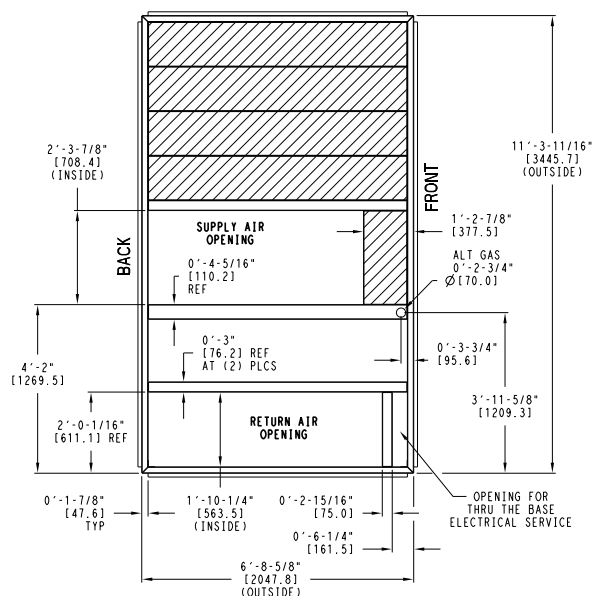


Fig. 4 — 48FC**20 Roof Curb Dimensions

ACCESSORY DIMENSION PRINT

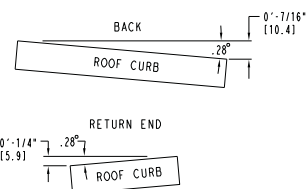
"A"	ROOF CURB ACCESSORY
1'-2" [356.0]	CRRFCURB047A00
2'-0" [610.0]	CRRFCURB048A00



NOTES:

- 1 ROOF CURB ACCESSORY IS SHIPPED UNASSEMBLED.
2 DIMENSIONS IN [] ARE IN MILLIMETERS.
3 ROOF CURB GALVANIZED STEEL.
4 ATTACH DUCTWORK TO CURB (FLANGES ON DUCT
REST ON CURB)
5 SERVICE CLEARANCE 4 ft ON EACH SIDE

➔ DIRECTION OF AIR FLOW



MAX CURB LEVELING TOLERANCES

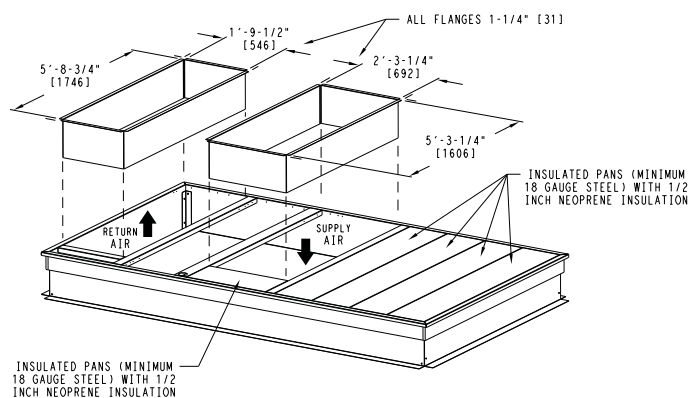
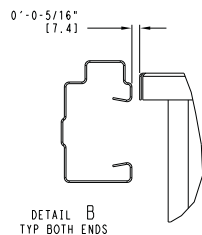
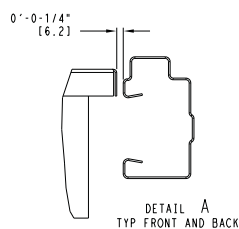
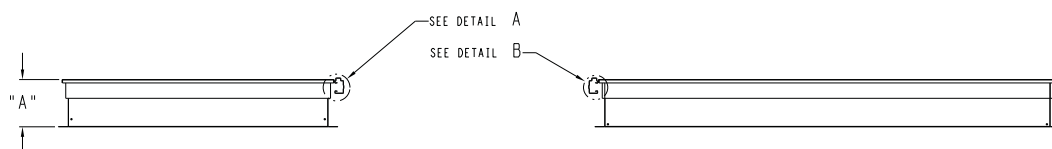
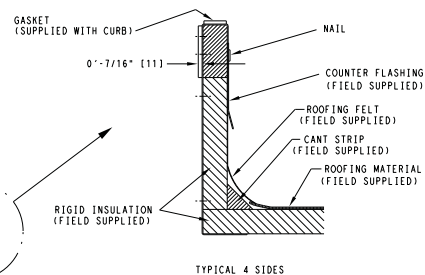
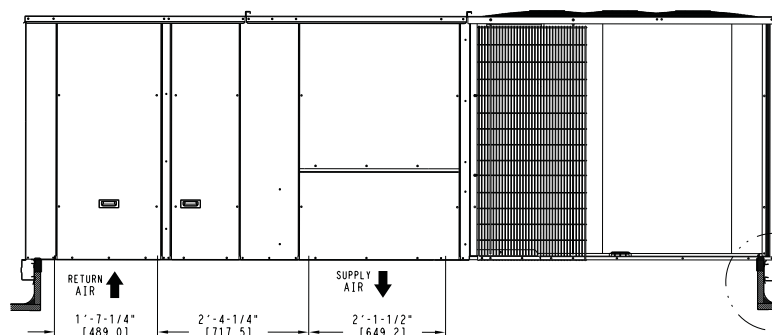
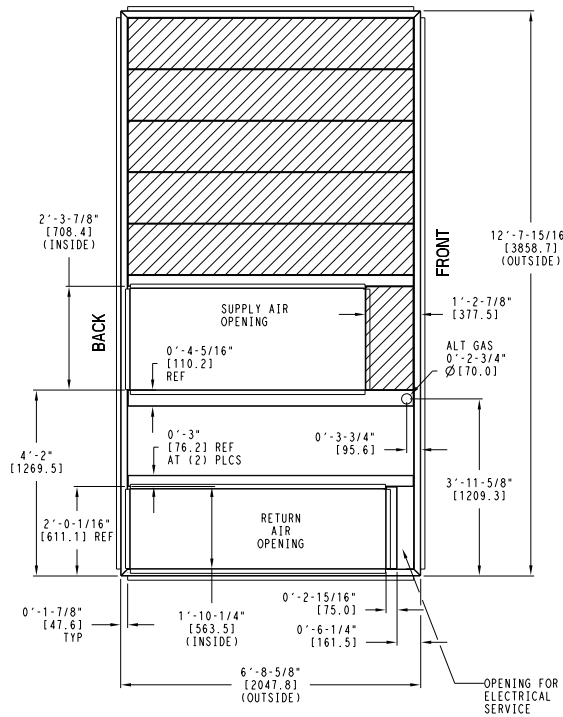


Fig. 5 — 48FC24-28 Roof Curb Dimensions**

ACCESSORY DIMENSION PRINT

"A"	ROOF CURB ACCESSORY
1'-2" [356.0]	CRRFCURB049A00
2'-0" [610.0]	CRRFCURB050A00



- NOTES:
- 1 ROOF CURB ACCESSORY IS SHIPPED UNASSEMBLED.
 - 2 BOLT HEADS TO BE ON INSIDE OF FLANGE. CLEARANCE IS (11) 0'-0-7/16" TYP ALL CORNERS.
 - 3 DIMENSIONS IN () ARE IN MILLIMETERS.
 - 4 ROOF CURB GALVANIZED STEEL.
 - 5 ATTACH DUCTWORK TO CURB (FLANGES ON DUCT REST ON CURB)
 - 6 SERVICE CLEARANCE 4 (1) ON EACH SIDE
- ➔ DIRECTION OF AIR FLOW

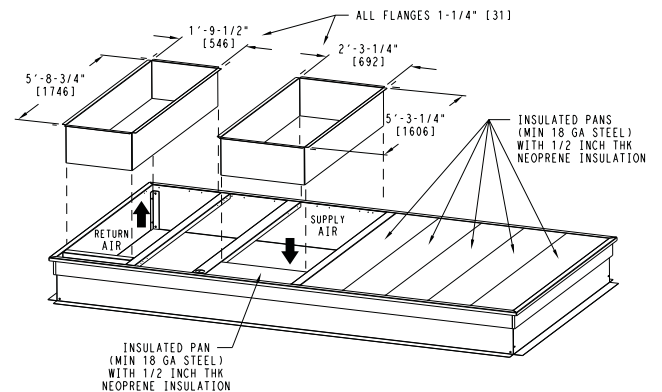
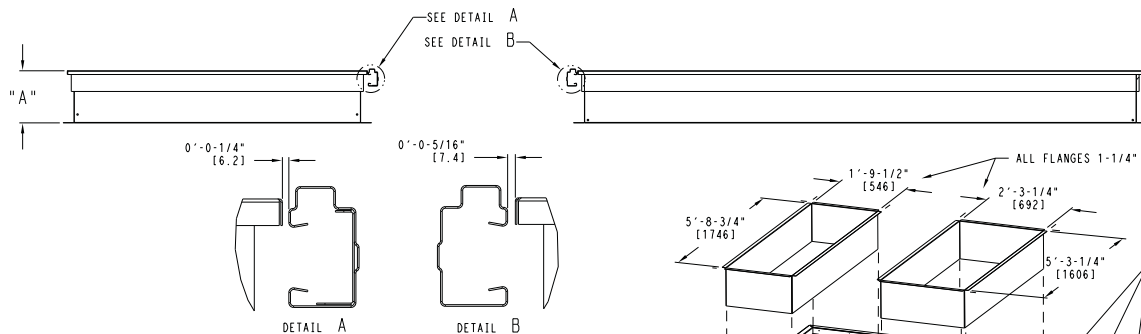
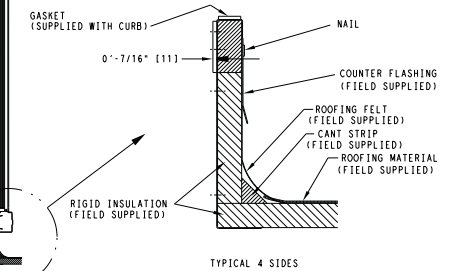
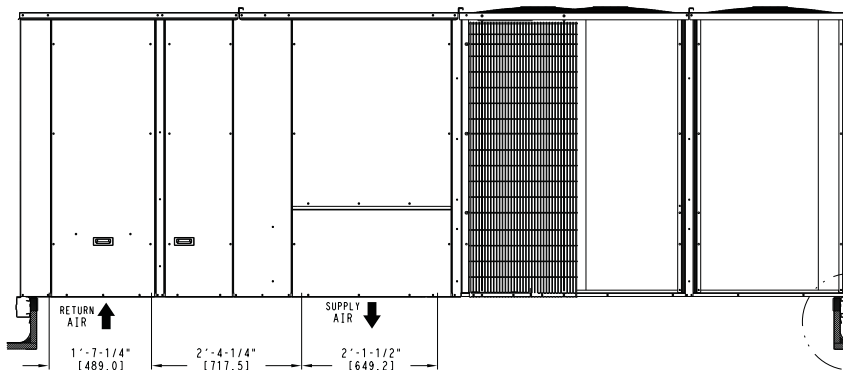
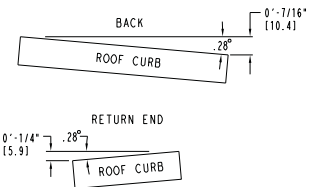


Fig. 6 — 48FC**30 Roof Curb Dimensions

