

# Installation Instructions

Part No. CRTRXKIT003A00

**IMPORTANT:** Read these instructions completely before attempting to install this accessory.

## SAFETY CONSIDERATIONS

Installation of this accessory can be hazardous due to system pressures, electrical components, and equipment location (such as a roof or elevated structure). Only trained, qualified installers and service technicians should install, start-up, and service this equipment.

When installing this accessory, observe precautions in the literature, labels attached to the equipment, and any other safety precautions that apply:

- Follow all safety codes
- Wear safety glasses and work gloves
- Use care in handling and installing this accessory

It is important to recognize safety information. This is the safety-alert symbol: ⚠. When you see this symbol on the unit and in instructions or manuals, be alert to the potential for personal injury.

Understand the signal words DANGER, WARNING, CAUTION, and NOTE. These words are used with the safety-alert symbol. DANGER identifies the most serious hazards which **will** result in severe personal injury or death. WARNING signifies hazards which **could** result in personal injury or death. CAUTION is used to identify unsafe practices, which **may** result in minor personal injury or product and property damage. NOTE is used to highlight suggestions which **will** result in enhanced installation, reliability, or operation.

### ⚠ WARNING

#### ELECTRICAL OPERATION HAZARD

Failure to follow this warning could result in personal injury or death.

Disconnect power supply and install lockout tag before attempting to install accessory.

### ⚠ WARNING

#### ELECTRICAL SHOCK HAZARD

Failure to follow this warning could cause personal injury or death.

Before performing service or maintenance operations on unit, turn off main power switch to unit and install lock(s) and lock-out tag(s). Ensure electrical service to rooftop unit agrees with voltage and amperage listed on the unit rating plate. Unit may have more than one power switch.

## BEFORE INSTALLATION

Inspect the contents of this accessory package before installing. File a claim with the shipping provider if contents are damaged or parts are missing. See Table 1 and Fig. 1 for kit contents and details.

## GENERAL

This transformer kit is to be used in conjunction with the Low Ambient Head Pressure Kit (CRLAMBKT002A00). This kit is required on 575-v units to convert the 575-v unit power to 460-v power that the head pressure controller can utilize. The 575-v unit is factory-supplied with 575-v outdoor fan (condenser) motors and must be replaced with 460-v motors to work with this transformer kit and low ambient kit. This transformer kit is an Auto-transformer (buck boost) to convert 575-v to 460-v and uses 460-v connection on the head pressure controller. Refer to the low ambient kit instructions for details on installation and operation.

NOTE: This kit only covers the 575-v units mentioned throughout this manual.

### ⚠ WARNING

#### CUT HAZARD

Failure to follow this caution may result in personal injury.

Sheet metal parts may have sharp edges or burrs. Use care and wear appropriate protective clothing, safety glasses and gloves when handling parts and servicing air conditioning equipment.

### ⚠ WARNING

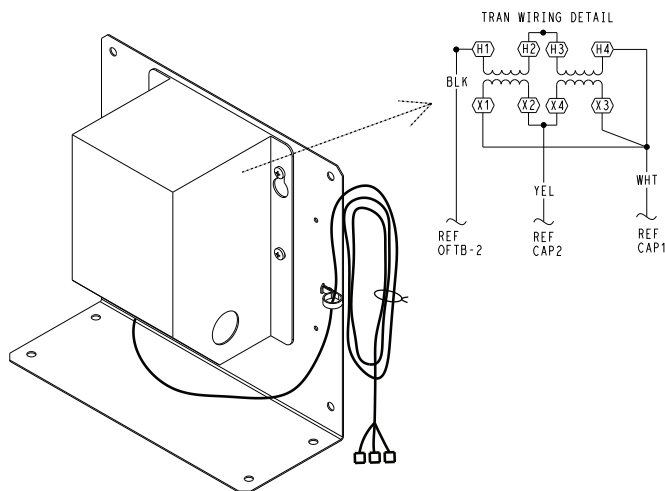
#### ELECTRICAL SHOCK HAZARD

Failure to follow this warning could result in personal injury or death.

Before installation or servicing system, always turn off main power to system and install lockout tag. Unit may have more than one disconnect switch. Turn off the accessory heater power switch, if applicable.

**Table 1 — Package Contents (CRTRXKIT003A00)**

PART DESCRIPTION	PART QUANTITY
TRANSFORMER ASSEMBLY	1
MOUNTING SCREWS	4
INSTRUCTIONS	1



**Fig. 1 — Transformer Kit Details**

**IMPORTANT:** This accessory is designed for specific model small rooftop units. Refer to Table 2 for valid model-size applications.  
**DO NOT ATTEMPT TO INSTALL ON MODELS AND SIZES NOT INCLUDED IN THE PRODUCT USAGE TABLE.**  
 The use of this kit is only intended for use with the condenser motor, capacitor, and winter start kit accessory in Table 2.

## INSTALLATION

### 48/50FC 08-12, 582K/559K 08-12, RGV/RAV 090-120 (Size Units)

1. Disconnect power to the unit. Lockout/tag-out unit disconnect switch.
2. Open and remove the access panel and cover to the main control box.
3. Use a voltmeter to check that no power is present at unit terminal block.
4. Replace the 575-v condenser motors with the 460-v motors in Table 2. **NOTE:** These steps are also listed in the low ambient instructions.
  - a. Disconnect condenser motor wires from control box connections. See Fig. 2 for connections.
  - b. Remove the black wire from the Outdoor Fan Relay (OFR/OFR1) terminal 2 and remove the black wire from the Low Ambient Relay (LAR/OFR2) terminal 2.
  - c. Remove brown and yellow motor wires from the condenser motor capacitor. Carefully remove harness ends from control box.
  - d. Remove the motor assembly from the top cover and install matching condenser motor as suggested in Table 2. Route new motor harness to control box following the same path as preceding motor. At this time, also replace the condenser capacitor in the control box if required by Table 2.
  - e. Connect the yellow and brown wires from the new motor(s) to the condenser capacitor. Connect the black wires to the same location removed in Step 4 and Fig. 2.

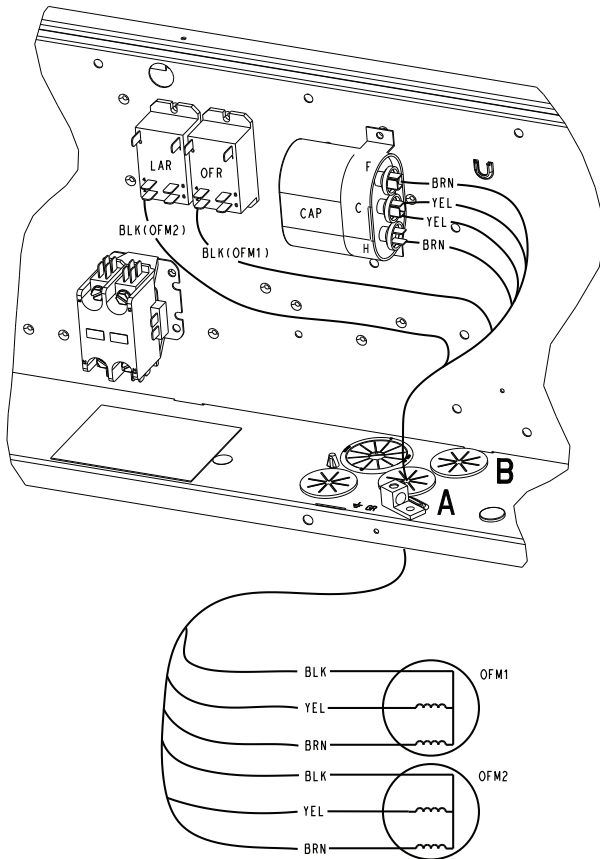
**Table 2 — Product Usage**

UNIT MODEL NUMBER	UNIT VOLTAGE	MOTOR P/N	CAPACITOR P/N	TRANSFORMER P/N	LOW AMBIENT KIT ACCESSORY	WINTER START KIT ACCESSORY
48/50FC* 08-12 582K/559K 08-12 RGV/RAV 090-120	575-3-60	(2) HC40GE463	Replace with HC93CA013	CRTRXKIT003A00†	(1) CRLAMBKT001A01	(1) CRWINSTR001A00

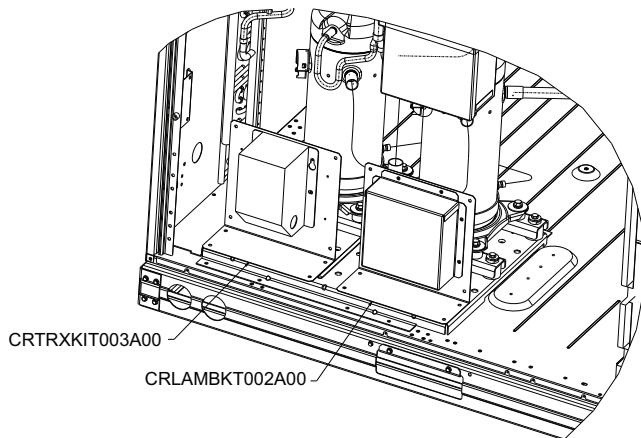
†CRTRXKIT003A00 can be purchased separately.

5. Install the transformer assembly (refer to Fig. 1) in the location shown in Fig. 3. Use the included self tapping screws as needed..

**IMPORTANT:** Do not screw into the base pan of the unit. Only screw into the compressor plate.



**Fig. 2 — Motor Wiring Inside Control Box**



**Fig. 3 — Controller and Transformer Installation Locations**

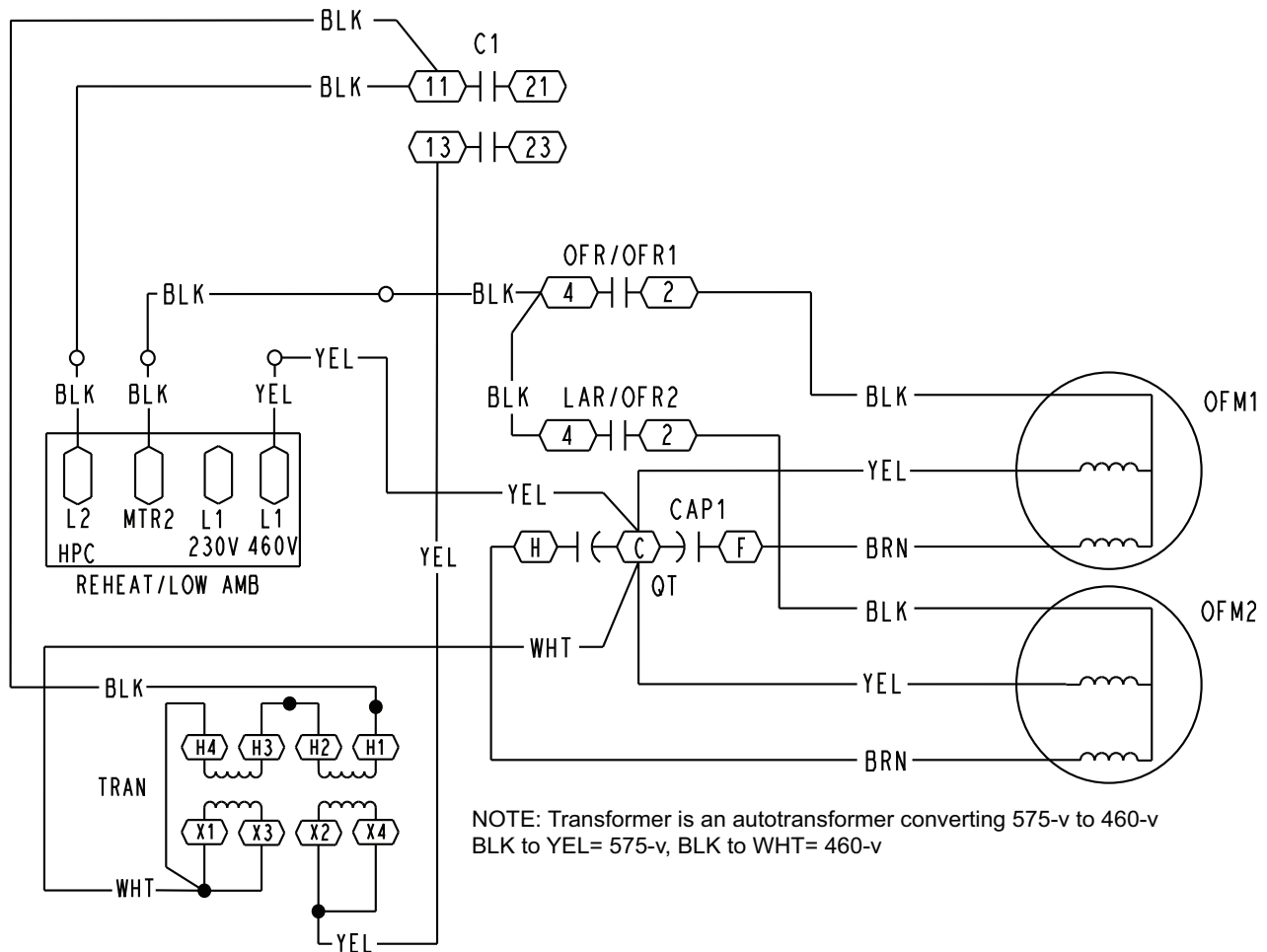
6. Locate the yellow wire that connects the compressor contactor to CAP1. Remove this wire or disconnect on both ends and tape off. This step is repeated for the low ambient kit wiring instructions.

**IMPORTANT:** This transformer assembly is wired as an auto-transformer and not an isolation transformer since the black wire leg is shared across primary and secondary. This transformer as wired in Fig. 4 has BLK to YEL=575-v and BLK to WHT=460-v.

7. Route the transformer assembly wiring into the box through the hole marked A or B in Fig. 2.
8. Connect the black and yellow wires to the compressor contactor line side as shown in Fig. 4.
9. Connect the white wire to CAP1 as shown in Fig. 4.
10. Double check wiring per Fig. 4 and the unit wiring diagram attached to the unit. Verify that the condenser motors were replaced with the 460-v motors listed in Table 2.
11. Refer to the low ambient kit instructions for details on the head pressure control and other wiring it may have.

**CAUTION**

Transformer kit (CRTRXKIT003A00) and wiring requires 460-v motors to be installed. Failure to replace with the proper voltage motors will result in electrical failure.



**Fig. 4 — High Voltage Wiring Diagram for 48/50FC, 582K/559K, RGV/RAV (575-v)**