



Installation Instructions

Part No. 09FC70000801

SAFETY CONSIDERATIONS

Installing, starting up, and servicing air-conditioning equipment can be hazardous due to system pressures, electrical components, and equipment locations.

Only trained, qualified installers and service technicians should install, start up, and service this equipment.

When installing this accessory, observe precautions in the literature, on any labels attached to the equipment, and any additional safety precautions that may apply.

- Follow all safety codes.
- Wear safety glasses and work gloves.
- Use care in handling and installing this accessory.

⚠ CAUTION

To avoid the possibility of electrical shock, open and tag all disconnects before installing this equipment. Be aware that there may be more than one disconnect.

⚠ CAUTION

Only trained, qualified installers and service technicians should install, start up, and service this equipment. Untrained personnel can perform basic maintenance functions such as cleaning coils. All other operations should be performed by trained service personnel. When working on the equipment, observe precautions in the literature and on tags, stickers, and labels attached to the equipment.

INTRODUCTION

The accessory series piping is designed to connect the two piping sections of a 09FC 050-080 size unit in a series arrangement. With this kit, all of the brine flow passes through one section then the other. This will be used for low flow rates to help increase the tube velocity, increasing the capacity of the unit.

Check each item for shipping damage. If any damage is found, file a claim with the shipping agent immediately. If any item is missing or if any part does not assemble properly, notify your Carrier representative.

Table 1 — Accessory Contents

| ACCESSORY PART NO. | DESCRIPTION | ITEM NO. | QTY |
|--------------------|----------------------|----------|-----|
| 2001066576 | Pipe | 1 | 1 |
| 2001136439 | Insulation, Pipe | 2 | 1 |
| 30XV50080401 | Insulation, Tee | 3 | 2 |
| 30XV50080501 | Insulation, Tee | 4 | 2 |
| 30XV40088301 | Insulation, Coupling | 5 | 2 |

Field-Supplied Materials: Aerocel ProTape¹ or equivalent (15ft)

INSTALLATION

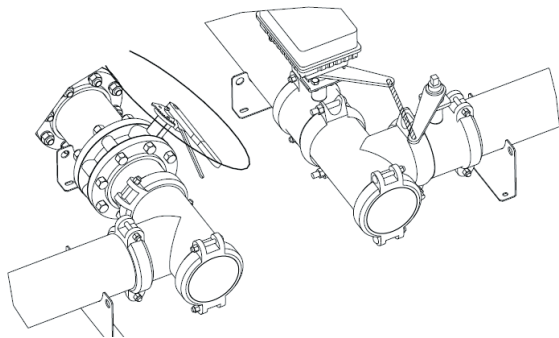
This conversion requires joining the two water connections in the center of the unit. These are the leaving water connection for the first circuit and the entering water connection of the second circuit.

⚠ WARNING

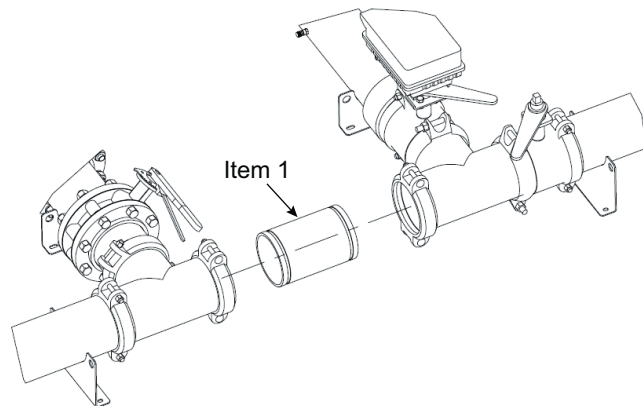
The fluid piping is shipped from the factory with a nitrogen holding charge. Remove pressure from system and confirm no residual pressure remains before removing the caps or tees.

1. Remove the insulation from the tees.
2. Remove the couplings holding the tees.
3. Remove the coupling and Victaulic cap from the tees.
4. Reorient the tees so they point towards each other, see Fig. 1. Reattach the tees with previously removed couplings. See Victaulic Coupling Installation on page 2.
5. Add the joining pipe (Item 1) included with this accessory. Attach with the existing couplings.
6. Add new insulation included with kit to the tees and joining pipe section (Items 2-5). Seal insulation with Aerocel ProTape or equivalent, by others.

1. ProTape is the registered trademark of Aeroflex USA Inc.



09FC050-080 as Build from Factory



09FC050-080 Converted to Series Piping

Fig. 1 — Modular Unit Series Piping

Victaulic Coupling Installation

1. The outside surface of the pipe, between the groove and the pipe end, must be smooth and free from indentations, projections (including weld seams), and roll marks to ensure a leak-tight seal. All oil, grease, loose paint and dirt must be removed.
2. Apply a thin coat of Victaulic lubricant or silicone lubricant to the gasket sealing lips and exterior.

⚠ CAUTION

Always use a compatible lubricant to prevent the gasket from pinching or tearing during installation. Failure to follow this instruction could result in joint leakage.

3. Position the gasket over the pipe end. Make sure the gasket does not overhang the pipe end.
4. Align and bring the two pipe ends together. Slide the gasket into position and center it between the groove in each pipe end. Make sure no portion of the gasket extends into the groove in either pipe end.

5. Install the housings over the gasket.

NOTE: Make sure the housings' keys engage the grooves completely on both pipe ends.

⚠ CAUTION

Make sure the gasket does not become rolled or pinched while installing the housings. Failure to follow this instruction could cause damage to the gasket, resulting in joint leakage.

6. Install the bolts, and thread a nut finger-tight onto each bolt. For couplings supplied with stainless steel hardware, apply an anti-seize compound to the bolt threads. Make sure the oval neck of each bolt seats properly in the bolt hole.
7. Tighten the nuts evenly by alternating sides until metal-to-metal contact occurs at the bolt pads. Make sure the housings' keys engage the grooves completely.
NOTE: It is important to tighten the nuts evenly to prevent gasket pinching.
8. Visually inspect the bolt pads at each joint to ensure metal-to-metal contact is achieved.