



Installation Instructions


Part Numbers: CRRFCURB005A00, 006A00, 009A00, 0014A00

SAFETY CONSIDERATIONS

Installation of this accessory can be hazardous due to system pressures, electrical components, and equipment location (such as a roof or elevated structure). Only trained, qualified installers and service technicians should install, start-up, and service this equipment.

When installing this accessory, observe precautions in the literature, labels attached to the equipment, and any other safety precautions that apply:

- Follow all safety codes
- Wear safety glasses and work gloves
- Use care in handling and installing this accessory

It is important to recognize safety information. This is the safety-alert symbol: . When you see this symbol on the unit and in instructions or manuals, be alert to the potential for personal injury.

Understand the signal words DANGER, WARNING, CAUTION, and NOTE. These words are used with the safety-alert symbol. DANGER identifies the most serious hazards which **will** result in severe personal injury or death. WARNING signifies hazards which **could** result in personal injury or death. CAUTION is used to identify unsafe practices, which **may** result in minor personal injury or product and property damage. NOTE is used to highlight suggestions which **will** result in enhanced installation, reliability, or operation.

WARNING

To prevent injuries and rain damage, do not leave roof opening uncovered. If installation is not completed immediately after roof opening is cut and framed, provide an adequate temporary cover for the roof opening.

Table 1 — Roof Curb Usage

PART NO.	MODEL USAGE	TONS
CRRFCURB005A00	48/50K 2-5	20-35
CRRFCURB006A00	48/50K 2-5	40-50
CRRFCURB009A00	50K 2,3 50K with Electric Heat - Reduced Supply Opening	60
CRRFCURB014A00	48K 2-5 / 50K 4,5 (50K - No electric heat)	60

INSTRUCTIONS

See Table 1 for package usage. See Fig. 1-7 for roof curb details and dimensions.

1. Before installing curb:
 - a. Verify curb usage in Table 1. Ensure the curb part number matches the unit configuration.
 - b. Verify all curb parts have been received per Table 2.
 - c. Ensure that roof curb is located so that proper service clearances are maintained on the unit. Check unit certified drawing or unit installation instructions for clearances.
 - d. Ensure that curb can be installed within leveling tolerances. See unit leveling tolerances in Fig. 4-7 for acceptable slope of unit.
2. Cut hole in roof for duct openings. See Fig. 4-7 for duct opening dimensions in curb. Do not cut out entire area underneath curb.
3. Frame the roof opening to provide adequate structural support.
4. Assemble the curb sides using the joining brackets and corner 4 brackets as shown in Fig. 4-7.
NOTE: Corner brackets are in 4 corners.
5. Attach the curb side assembly to the curb ends using the corner brackets as shown in Fig. 4-7.
6. Screw the cross support and duct supports in place on the curb sides as shown in Fig. 1-7.
7. Screw the supply support (where it is required) in place between the duct supports as shown in Fig. 4.
8. Make sure the curb is square by measuring (equal distances) on the cross corners. Once square, attach curb to building structure following all applicable codes.
9. Roof-in curb per Fig. 4-7. Follow all applicable codes.
10. Install provided gasketing around complete perimeter of curb and around both the supply and return duct opening in curb.

IMPORTANT: Gasketing is critical for water integrity. Improperly installed gasketing can result in air leaks and poor unit performance.

Table 2 — Roof Curb Package Contents

PART NO.	PART	QTY
CRRFCURB005A00	Curb Sides	4
	Curb Ends	2
	Cross Supports	3
	Duct Support	4
	Supply Air Support	2
	Corner Brackets	4
	Joining Bracket	2
	Hardware Package	1
	Gasket	1
CRRFCURB006A00	Curb Sides	4
	Curb Ends	2
	Cross Supports	3
	Duct Support	4
	Corner Brackets	4
	Joining Bracket	2
	Hardware Package	1
	Gasket	1

Table 2 — Roof Curb Package Contents (cont)

PART NO.	PART	QTY
CRRFCURB009A00	Curb Sides	6
	Curb Ends	2
	Cross Supports	3
	Duct Support	8
	Deck Pan	2
	Corner Brackets	4
	Joining Bracket	4
	Hardware Package	1
	Gasket	1
CRRFCURB014A00	Curb Sides	6
	Curb Ends	2
	Cross Supports	3
	Duct Support	8
	Corner Brackets	4
	Joining Bracket	4
	Hardware Package	1
	Gasket	1

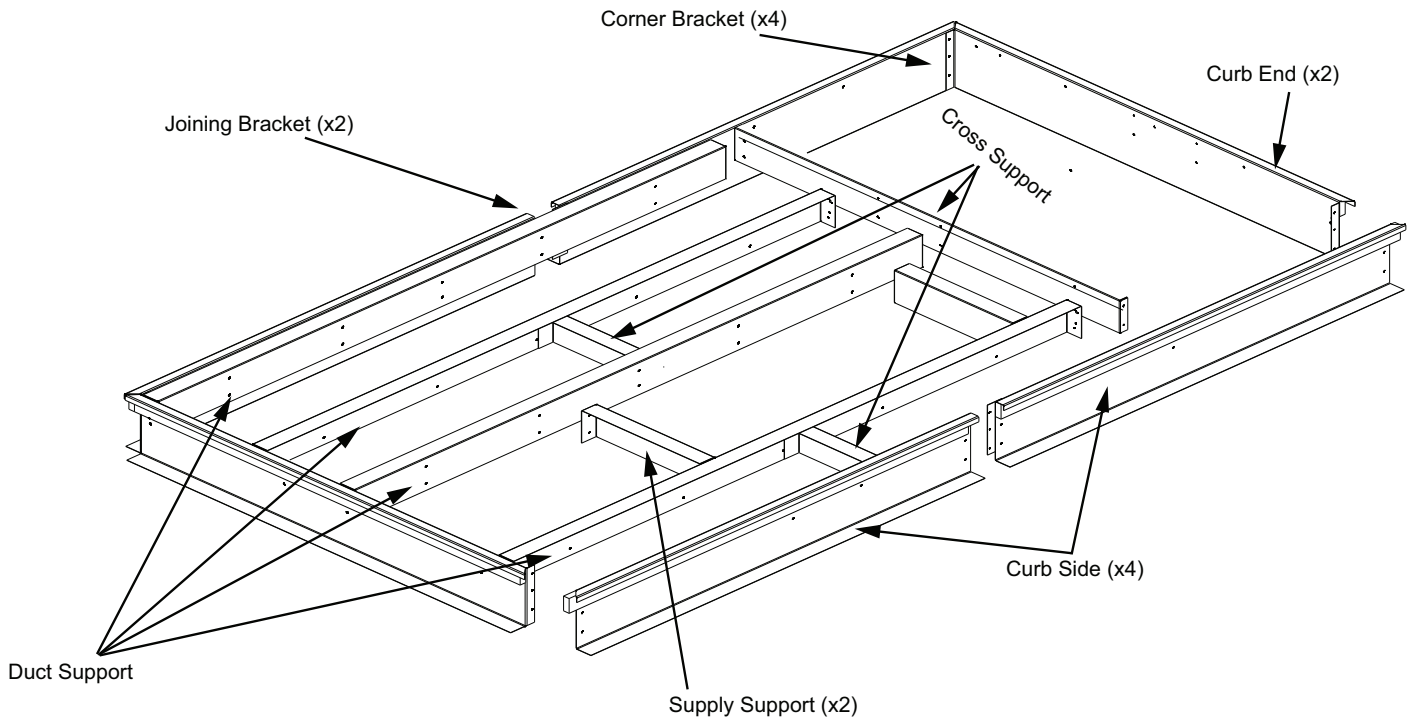


Fig. 1 — CRRFCURB005A00 Roof Curb Dimensions — Typical Exploded View

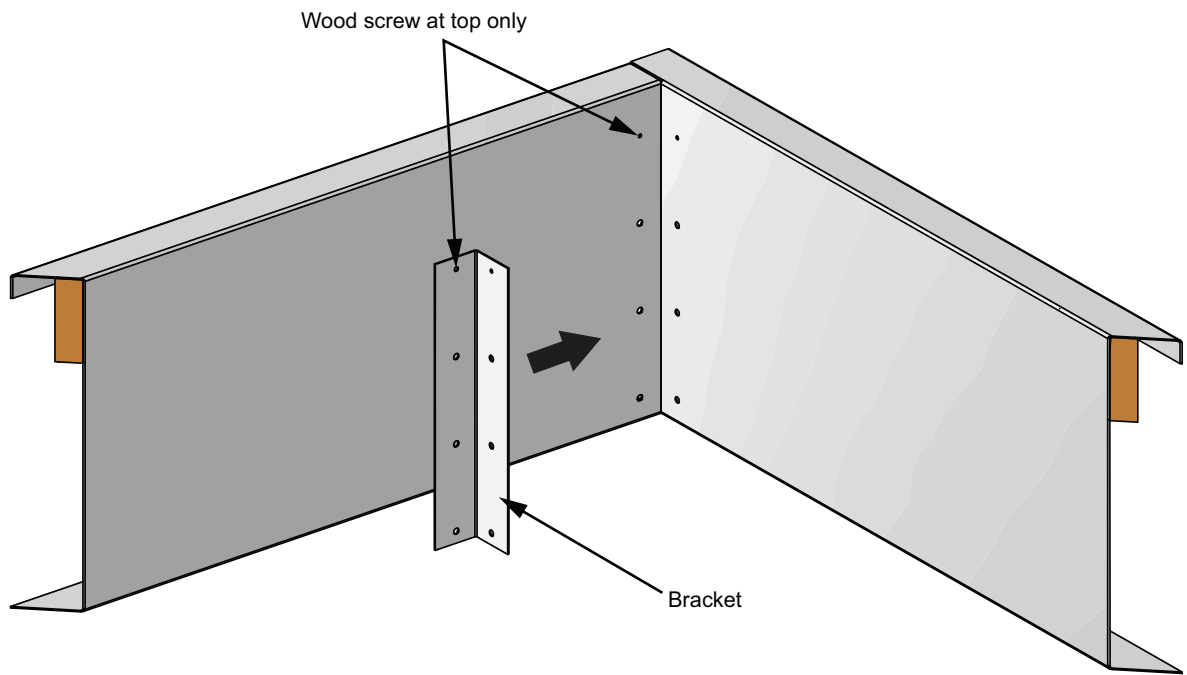


Fig. 2 — Corner Bracket Assembly (Sides and Ends Exploded)

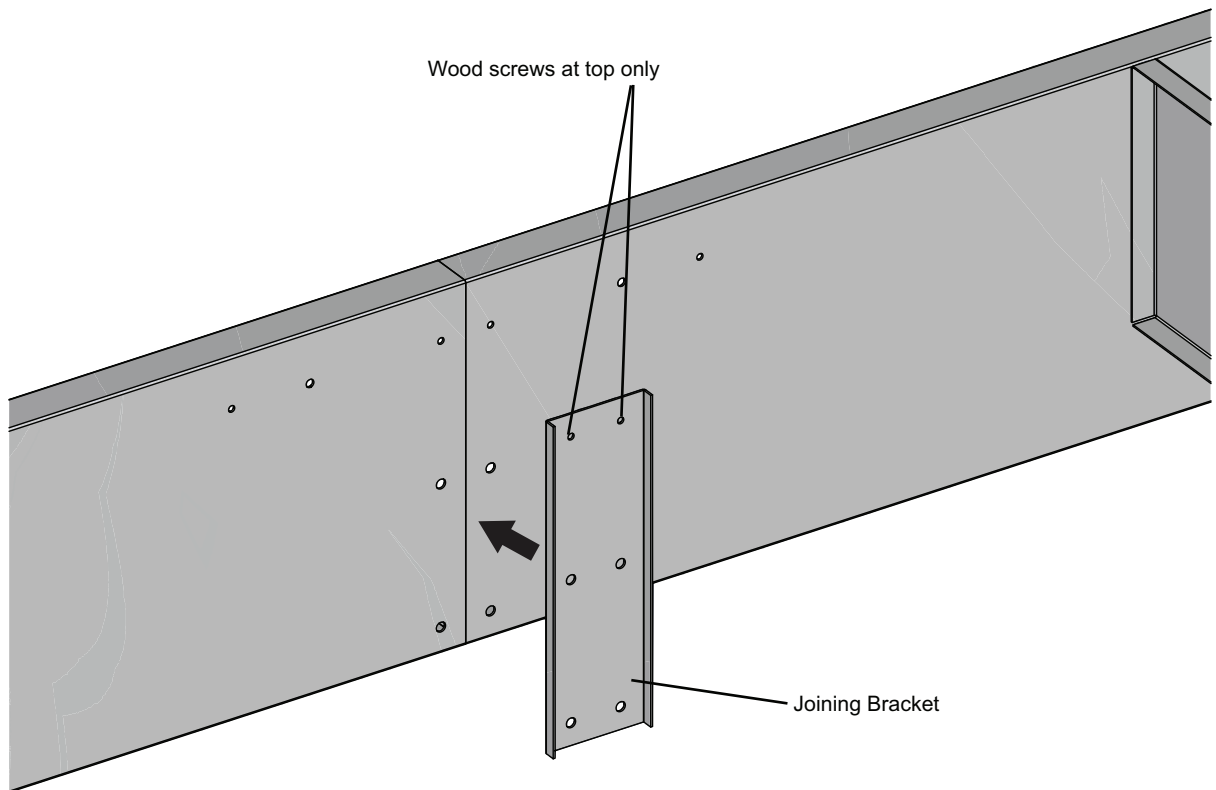


Fig. 3 — Joining Brackets

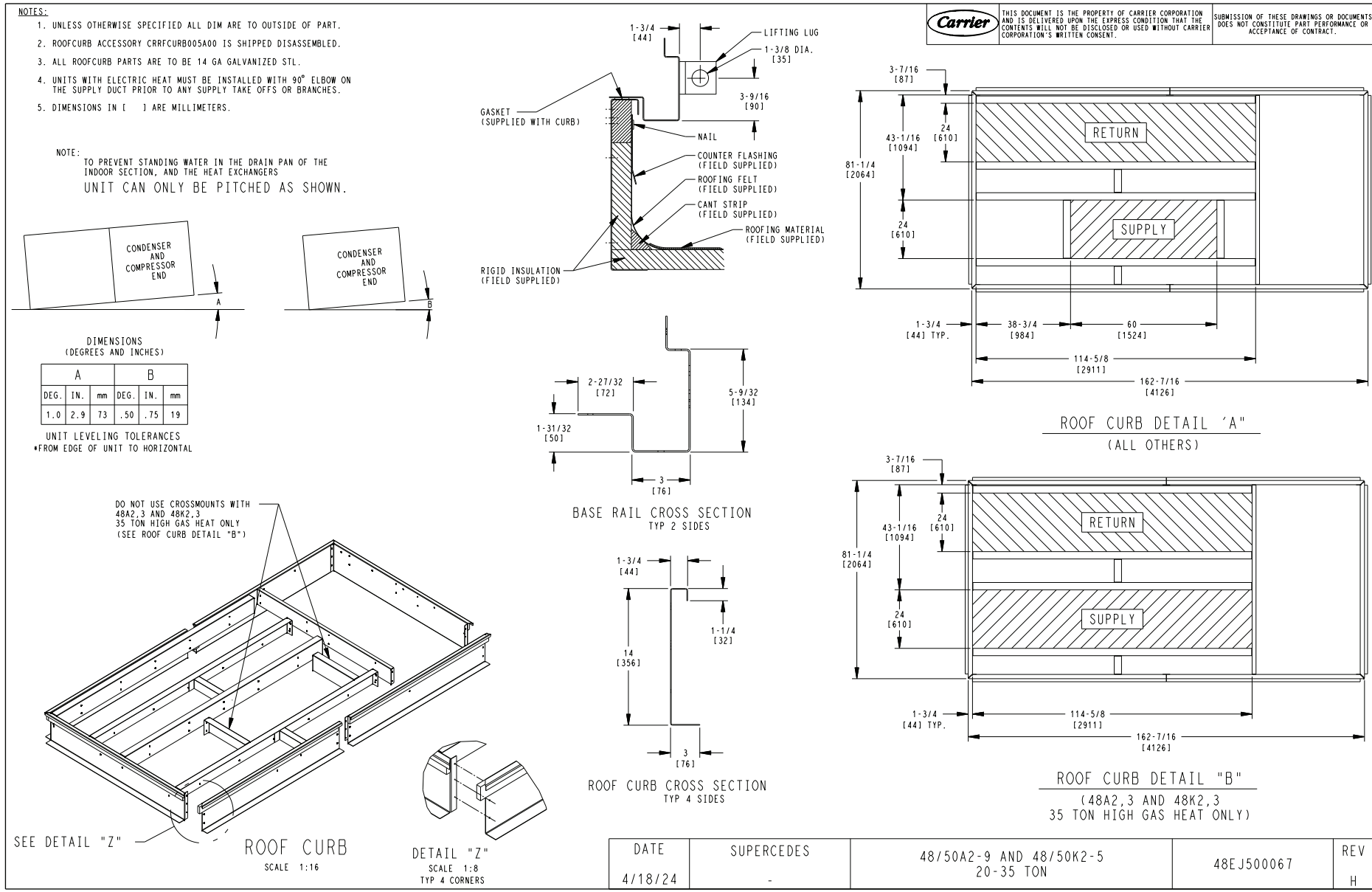
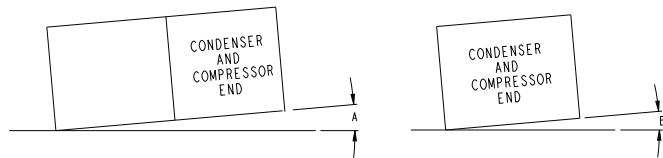


Fig. 4 — CRRFCURB005A00 Roof Curb Dimensions — 48/50K2-5 20-35 Ton (48K 35 Ton, High Gas Heat Only) Detailed View

NOTE:

1. UNLESS OTHERWISE SPECIFIED ALL DIM ARE TO OUTSIDE OF PART.
2. ROOFCURB ACCESSORY CRRFCURB006A00 IS SHIPPED DISASSEMBLED.
3. ALL ROOFCURB PARTS: 14 GA GALVANIZED STL.
4. UNITS WITH ELECTRIC HEAT MUST BE INSTALLED WITH 90° ELBOW ON THE SUPPLY DUCT PRIOR TO ANY SUPPLY TAKE OFFS OR BRANCHES.
5. DIMENSIONS IN [] ARE MILLIMETERS.

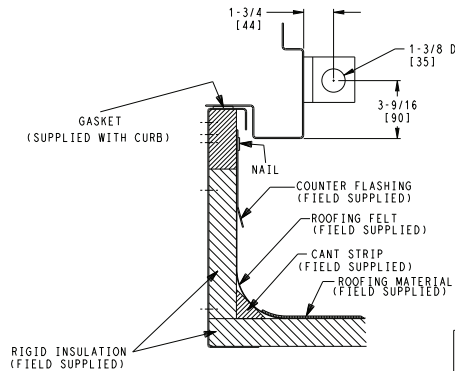
NOTE:
TO PREVENT STANDING WATER IN THE DRAIN PAN OF THE
INDOOR SECTION, AND THE HEAT EXCHANGERS
UNIT CAN ONLY BE PITCHED AS SHOWN.



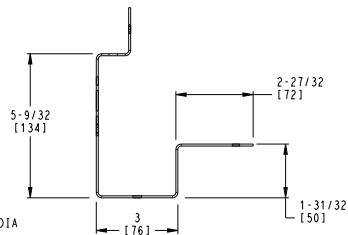
DIMENSIONS
(DEGREES AND INCHES)

A			B		
DEG.	IN.	mm	DEG.	IN.	mm
1.0	2.9	73	.50	.75	19

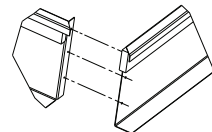
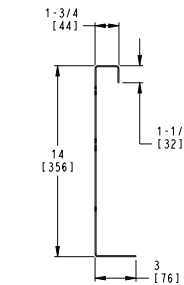
UNIT LEVELING TOLERANCES
*FROM EDGE OF UNIT TO HORIZONTAL



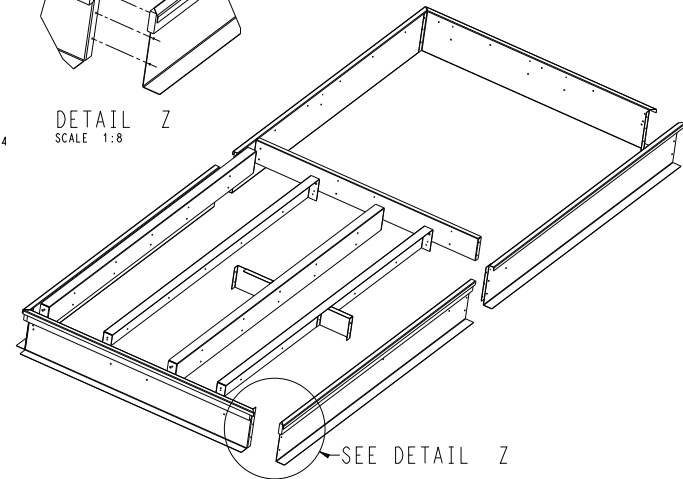
BASE RAIL CROSS SECTION
TYP (2) SIDES



ROOF CURB CROSS SECTION
TYP 4 SIDES



DETAIL Z
SCALE 1:8



THIS DOCUMENT IS THE PROPERTY OF CARRIER CORPORATION AND IS DELIVERED UPON THE EXPRESS CONDITION THAT THE CONTENTS WILL NOT BE DISCLOSED OR USED WITHOUT CARRIER CORPORATION'S WRITTEN CONSENT.

SUBMISSION OF THESE DRAWINGS OR DOCUMENTS DOES NOT CONSTITUTE PART PERFORMANCE OR ACCEPTANCE OF CONTRACT.

ITC CLASSIFICATION	SHEET	DATE	SUPERCEDES	48/50A2-9 AND 48/50K2-5 40-50 TON	48EJ503213	REV
U.S. ECCN: EAR99	1 OF 1	4/19/24	-			C

Fig. 5 — CRRFCURB006A00 Roof Curb Dimensions — 48/50K2-5 40-50 Ton

NOTE:

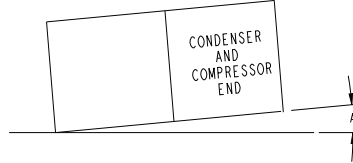
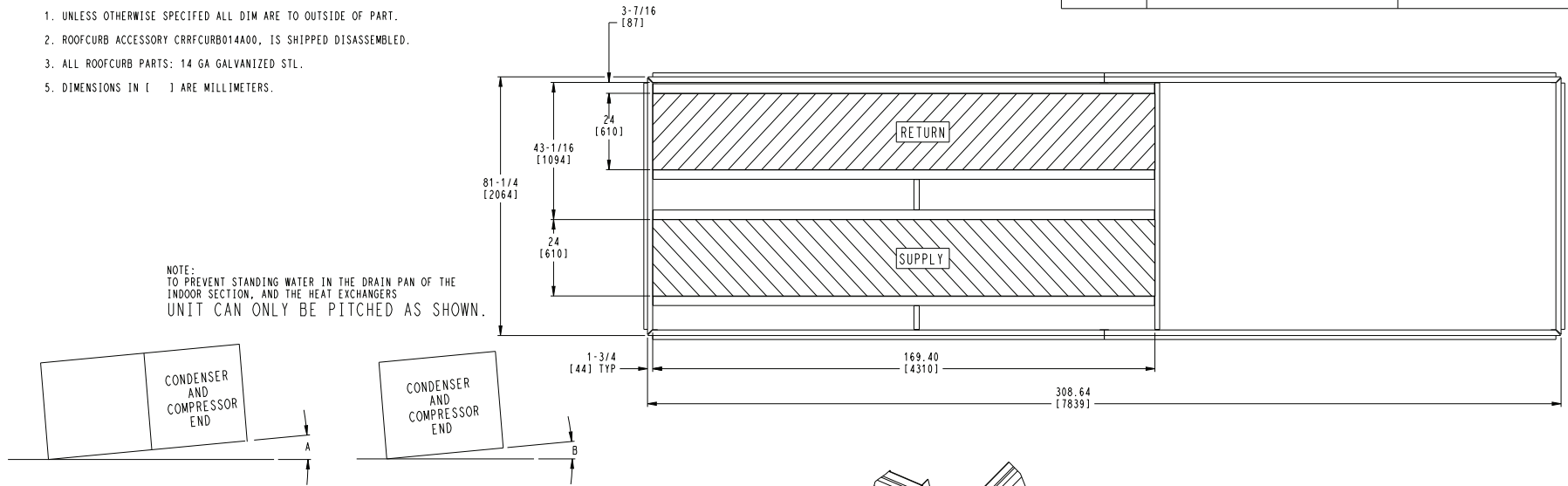
1. UNLESS OTHERWISE SPECIFIED ALL DIM ARE TO OUTSIDE OF PART.
2. ROOFCURB ACCESSORY CRRFCURB014A00, IS SHIPPED DISASSEMBLED.
3. ALL ROOFCURB PARTS: 14 GA GALVANIZED STL.
5. DIMENSIONS IN [] ARE MILLIMETERS.



THIS DOCUMENT IS THE PROPERTY OF CARRIER CORPORATION AND IS DELIVERED UPON THE EXPRESS CONDITION THAT THE CONTENTS WILL NOT BE DISCLOSED OR USED WITHOUT CARRIER CORPORATION'S WRITTEN CONSENT.

SUBMISSION OF THESE DRAWINGS OR DOCUMENTS DOES NOT CONSTITUTE PART PERFORMANCE OR ACCEPTANCE OF CONTRACT.

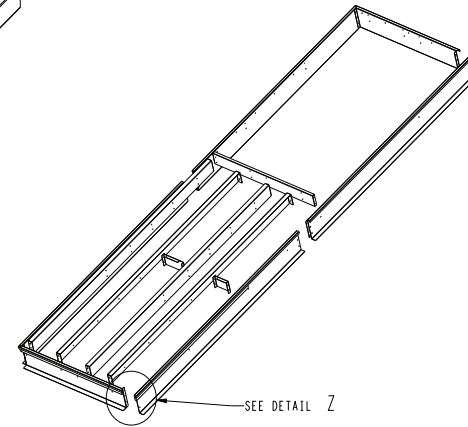
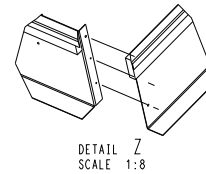
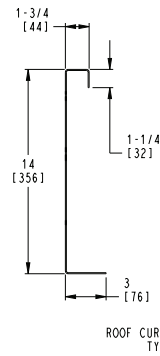
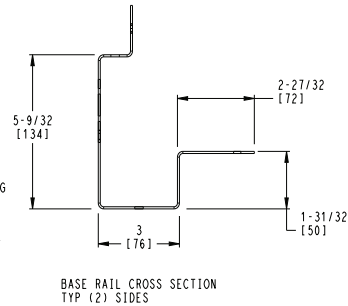
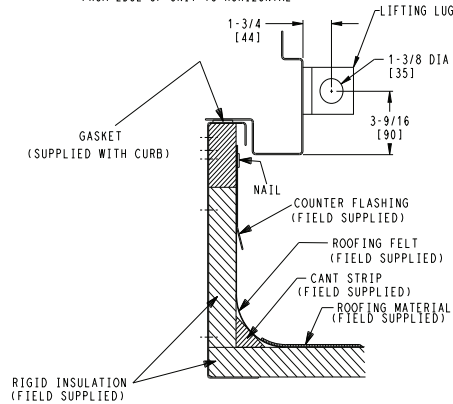
NOTE:
TO PREVENT STANDING WATER IN THE DRAIN PAN OF THE INDOOR SECTION, AND THE HEAT EXCHANGERS UNIT CAN ONLY BE PITCHED AS SHOWN.



DIMENSIONS
(DEGREES AND INCHES)

A			B		
DEG.	IN.	mm	DEG.	IN.	mm
1.0	5.43	138	.50	.75	19

UNIT LEVELING TOLERANCES
*FROM EDGE OF UNIT TO HORIZONTAL



ITC CLASSIFICATION	DATE	SUPERCEDES	48A2-9/50A4, 5, 8, 9 AND 48K2-5/50K4, 5 60 TON	48EJ503214	REV
U.S. ECCN: EAR99	4/19/24	-			C

Fig. 6 — CRRFCURB014A00 Roof Curb Dimensions — 48K2-5/50K4,5 60 Ton

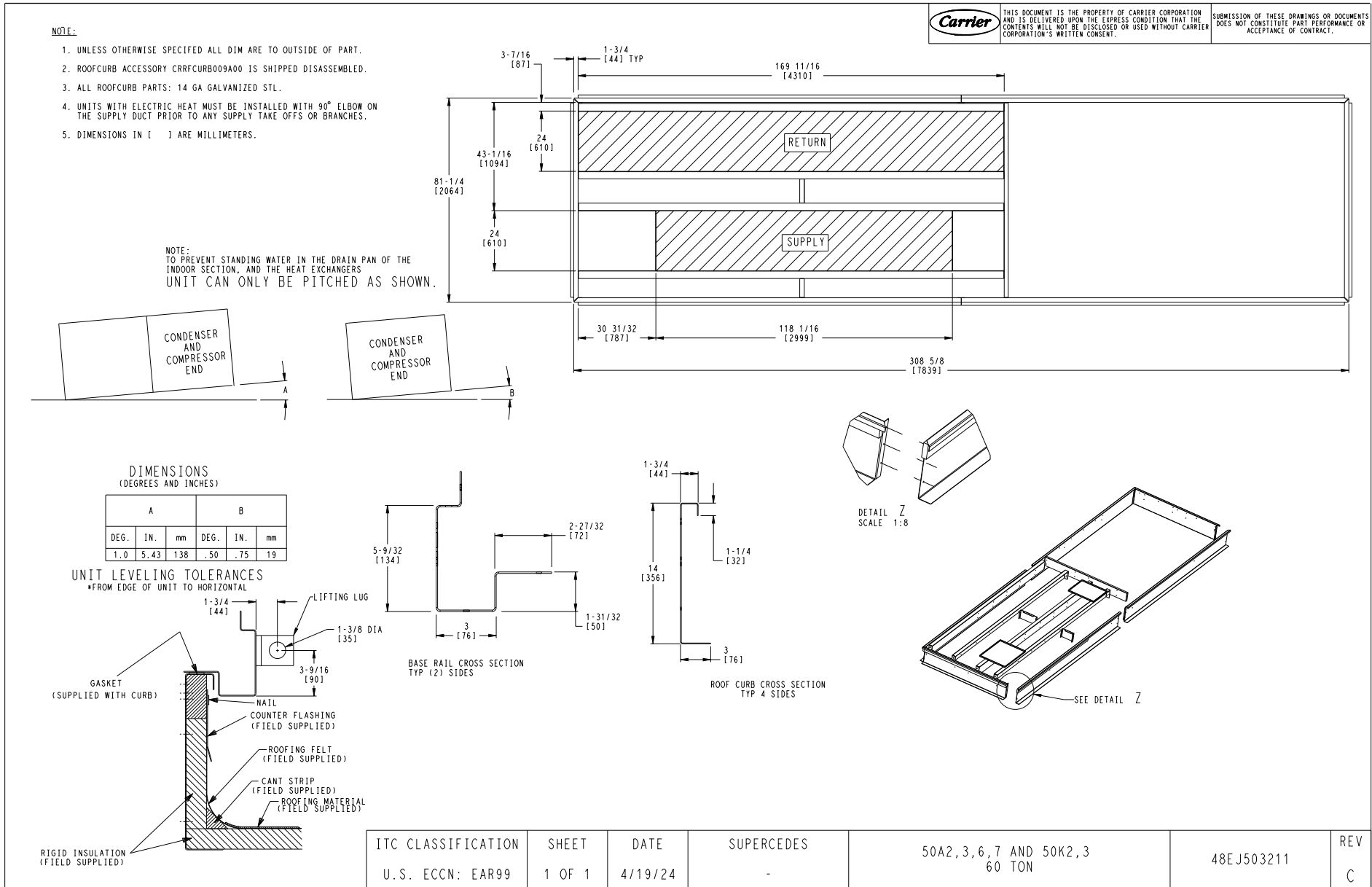


Fig. 7 — CRRFCURB009A00 Roof Curb Dimensions — 50K2,3 60 Ton

