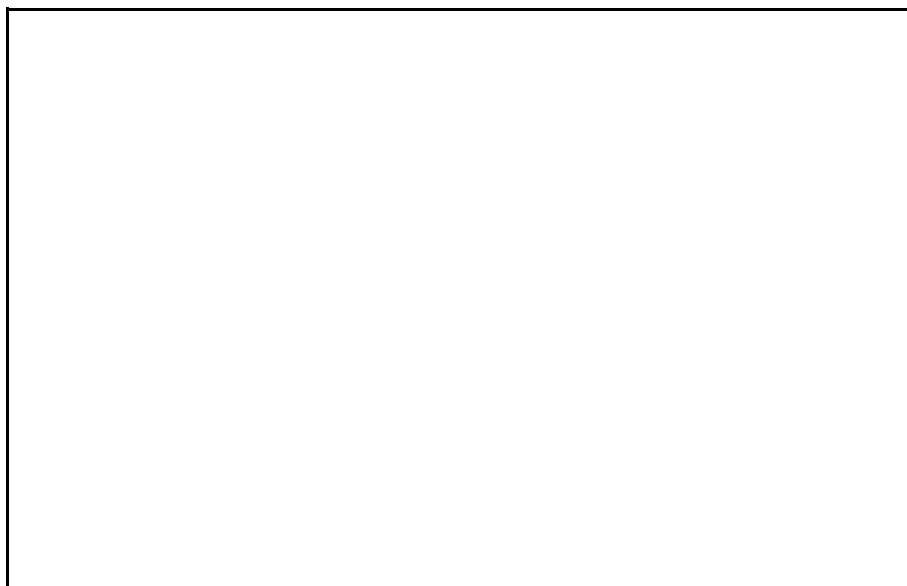




38AUQ 07-25 AIR-COOLED HEAT PUMP SPLIT SYSTEMS UNITS WITH PURON® (R-410A) REFRIGERANT

— PERFORMANCE DATA

— CERTIFIED DIMENSION PRINTS



JOB NAME:		LOCATION:	
BUYER:		BUYER PO #:	CARRIER#:
UNIT NUMBER:		MODEL NUMBER:	
PERFORMANCE DATA CERTIFIED BY:			

DESCRIPTION

38AUQ air-cooled heat pump split system units are easily connected by refrigerant lines and low voltage control wiring to matching Carrier 40RUQ packaged air-handling units or other suitable evaporator units. They are ideal for new construction or renovation applications where quality and performance are required.

STANDARD FEATURES

Standard Base Unit

- Puron® (R-410A) HFC refrigerant
- Single-stage cooling capacity control on 07-12 models
- Single circuit two-stage cooling capacity control on 07, 08, 12 models
- Two-stage cooling capacity control on 16 and 25 models
- All models utilize Round Copper Tube/Aluminum Plate Fin (RTPF) condenser coil
- Cooling operating range up to 125°F (52°C) and down to 35°F (2°C)
- Brass suction and liquid line service valves
- Fully hermetic scroll compressor with crankcase heater
- New terminal board facilitating simple safety circuit
- Troubleshooting and simplified control box arrangement
- 24-volt 75va control system
- High pressure and loss of charge protection
- UL or UL Canada listed (07-14 models) applies to standard units; 575-volt units UL, Canada only
- ETL listed (16-25 models)
- Suction line accumulator on each circuit

- Comfort Alert™ Diagnostic Board:
 - LED Go-No-Go and fault code
 - Built in time guard anti-short cycle
 - Phase protection
 - Fault code retention logic
 - Low voltage compressor contactor protection
- Full perimeter base rails with built-in rigging adapters and fork truck slots
- Pre-painted exterior panels and primer-coated interior panels tested to 500 hours salt spray protection
- Direct drive permanently lubricated condenser fan motors
- All units factory run tested
- Compressors mounted on independent vibration isolators
- High capacity filter drier shipped for each refrigerant circuit and field installation

Standard Limited Parts Warranty

- 5-year compressor parts
- 1-year condenser coil parts
- 1-year parts



PERFORMANCE DATA

Unit Operating Weight _____ lbs

COOLING

Gross Total Capacity: _____ Btuh

Sensible Capacity: _____ Btuh

Outdoor db: _____ °F

Entering Indoor wb: _____ °F

Indoor Unit cfm: _____ at _____ in. wg ESP

Power Input to Unit: _____ kW

HEATING

Integral Capacity: _____ Btuh at _____ F db

Power Input to Unit: _____ kW

Indoor Entering Air db: _____ F db

High Temp: _____ COP

ELECTRICAL DATA

Power Supply to Unit: _____

Volts: _____

Phase: _____

Hz: _____

Minimum Circuit Amps: _____

Maximum Overcurrent Protection: _____

SUBMITTAL DATA

Job Name: _____

Architect: _____

Engineer: _____

Contractor: _____

Unit Designation: _____

OPTIONS AND ACCESSORIES

FACTORY-INSTALLED OPTIONS

- ☐ E-coated condenser coil
- ☐ Pre-coat condenser coil
- ☐ Motormaster® low ambient head pressure controller, down to -20°F (-29°C)
- ☐ Non-fused disconnect
- ☐ Powered 115v convenience outlet
- ☐ Non-powered 115v convenience outlet
- ☐ Condenser hail guard – louvered style

OPTIONAL WARRANTIES

- ☐ Complete unit parts only up to 5 years.
 - ☐ Complete unit parts and labor up to 5 years.
- Many other optional warranties are available.
See the Commercial Start-Up and Optional Extended Warranty Price pages for further information.

FIELD-INSTALLED ACCESSORIES

- ☐ Motormaster® low ambient head pressure controller, down to -20°F (-29°C)
- ☐ Liquid line solenoid valve
- ☐ Liquid line solenoid valve coil
- ☐ Filter drier
- ☐ Sight glass
- ☐ Condenser coil hail guard – louvered style
- ☐ Thermostats and thermostat accessories

UNIT DIMENSION PRINT

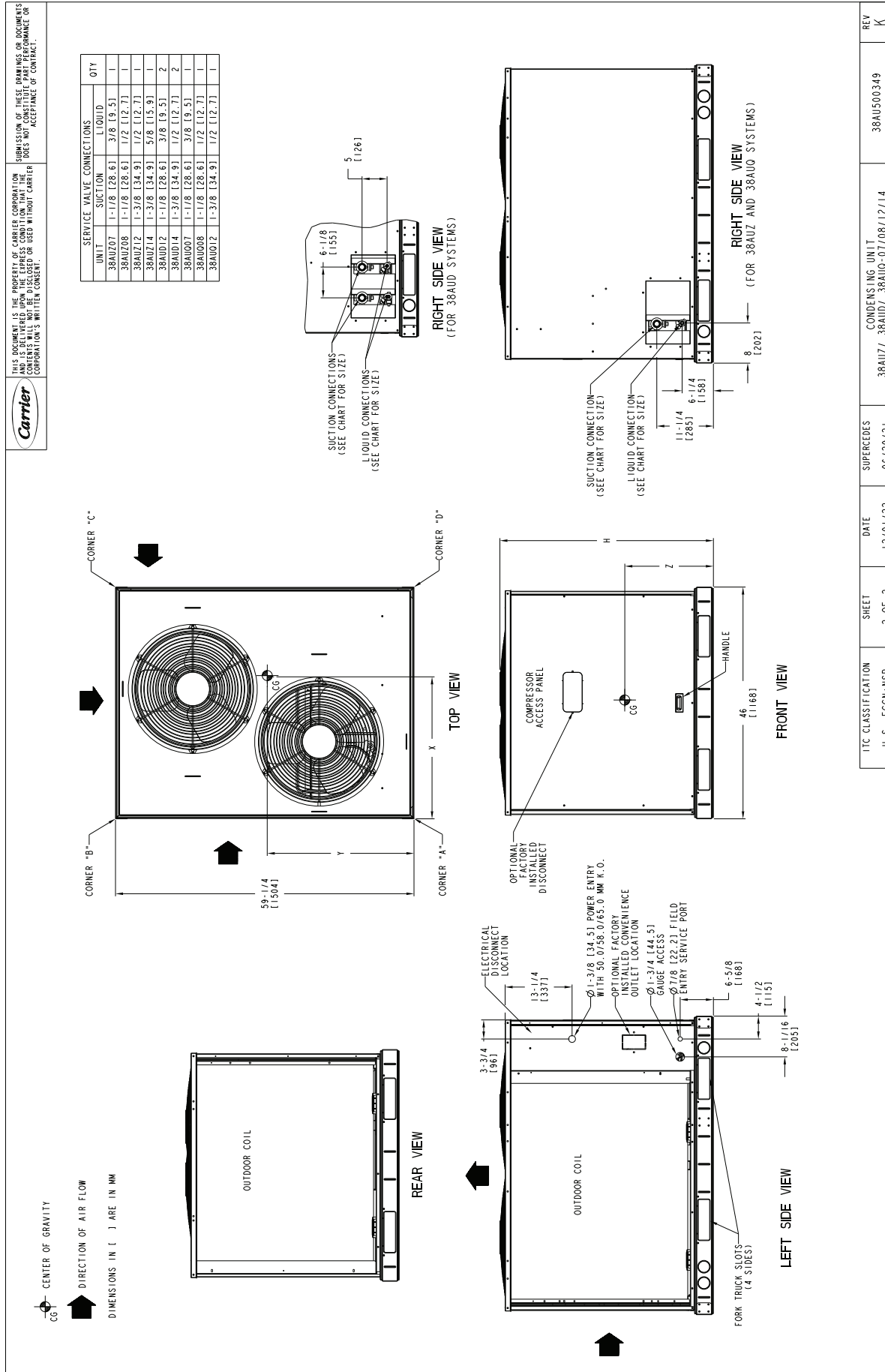


Fig. 1 — 38AUQ*07-12 Unit Dimensions



ITC CLASSIFICATION	SHEET	DATE	SUPERCEDES	CONDENSING UNIT	REV
U. S. ECCN: NSR	2 OF 2	12/01/22	06/29/21	38AUZ/ 38AUD/ 38AUO-07/08/12/14	K

THIS DOCUMENT IS THE PROPERTY OF CARRIER CORPORATION AND IS NOT TO BE REPRODUCED OR TRANSMITTED IN ANY FORM OR BY ANY MEANS, ELECTRONIC OR MECHANICAL, WITHOUT CARRIER CORPORATION'S WRITTEN CONSENT.	SUBMISSION OF THESE DRAWINGS OR DOCUMENTS DOES NOT CONSTITUTE PART PERFORMANCE OR ACCEPTANCE OF CONTRACT.
---	---

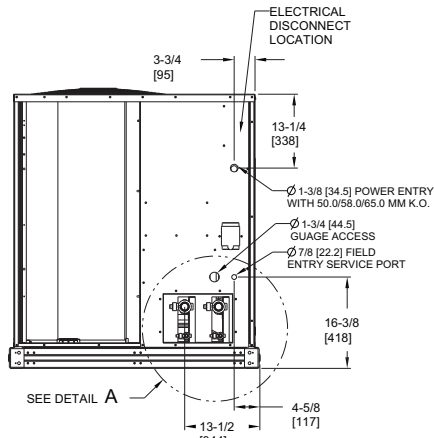
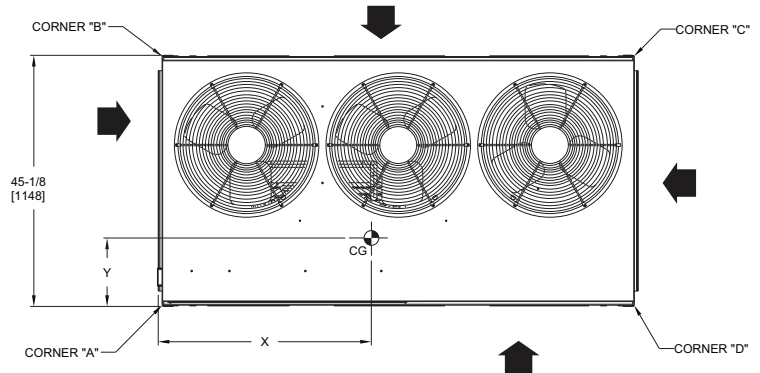


UNIT DIMENSION PRINT

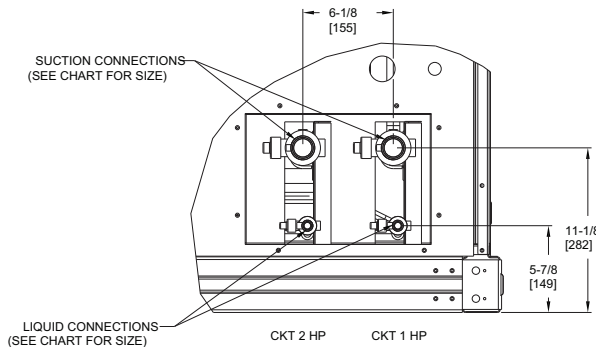
UNIT	STD. UNIT WT.		CORNER A		CORNER B		CORNER C		CORNER D		CENTER OF GRAVITY			UNIT HEIGHT	
	LBS.	KG.	LBS.	KG.	LBS.	KG.	LBS.	KG.	LBS.	KG.	X	Y	Z	H	
38AUQ16	768	348	236	107	183	83	153	69	196	89	39 [990.6]	20 [508]	23 [584.2]	50-3/8 [1279.2]	

 CENTER OF GRAVITY
 DIRECTION OF AIR FLOW
 DIMENSIONS IN [] ARE IN MM

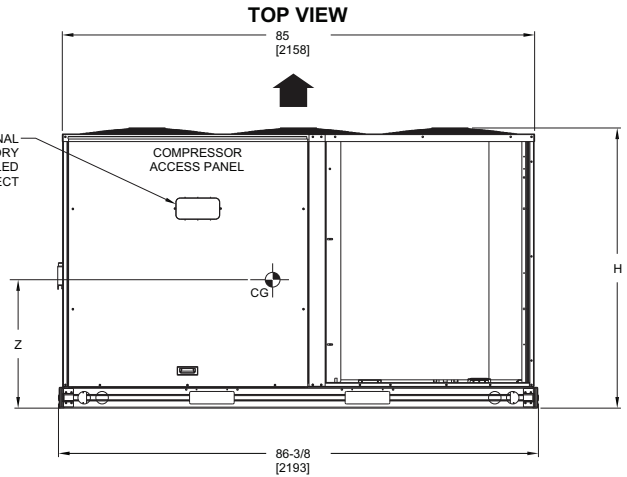
SERVICE VALVE CONNECTIONS			QTY
UNIT	SUCTION	LIQUID	
38AUQ16	1-3/8 [34.9]	1/2 [12.7]	2 EA



LEFT SIDE VIEW



DETAIL A
 (NOTE POSITION OF CKT 1)



- NOTES:
1. MINIMUM CLEARANCE (LOCAL CODES OR JURISDICTION MAY PREVAIL):
 - A. BOTTOM TO COMBUSTIBLE SURFACES: 0 INCHES.
 - B. OUTDOOR COIL, FOR PROPER AIR FLOW: 36 INCHES ONE SIDE, 12 INCHES THE OTHER. THE SIDE GETTING THE GREATER CLEARANCE IS OPTIONAL.
 - C. OVERHEAD: 60 INCHES, TO ASSURE PROPER OUTDOOR FAN OPERATION.
 - D. BETWEEN UNITS: CONTROL BOX SIDE, 42 INCHES PER NEC.
 - E. BETWEEN UNIT AND UNGROUNDED SURFACES: CONTROL BOX SIDE, 36 INCHES PER NEC.
 - F. BETWEEN UNIT AND BLOCK OR CONCRETE WALLS AND OTHER GROUNDED SURFACES: CONTROL BOX SIDE, 42 INCHES PER NEC.
 2. WITH EXCEPTION OF THE CLEARANCE FOR THE OUTDOOR COIL AS STATED IN NOTE 1B, A REMOVABLE FENCE OR BARRICADE REQUIRES NO CLEARANCE.
 3. UNITS MAY BE INSTALLED ON COMBUSTIBLE FLOORS MADE FROM WOOD OR CLASS A, B OR C ROOF COVERING MATERIAL.

Fig. 2 — 38AUQ*16 Unit Dimensions

UNIT DIMENSION PRINT

UNIT	STD. UNIT WT.		CORNER A		CORNER B		CORNER C		CORNER D		CENTER OF GRAVITY			UNIT HEIGHT
	LBS.	KG.	LBS.	KG.	LBS.	KG.	LBS.	KG.	LBS.	KG.	X	Y	Z	H
38AUQ25	1015	460	354	161	224	102	170	77	268	122	37 [939.8]	26 [660.4]	23 [584.2]	50-3/8 [1279.2]



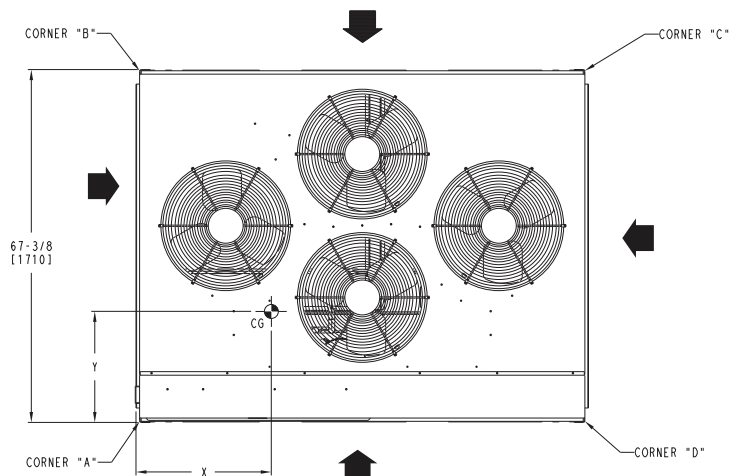
CENTER OF GRAVITY



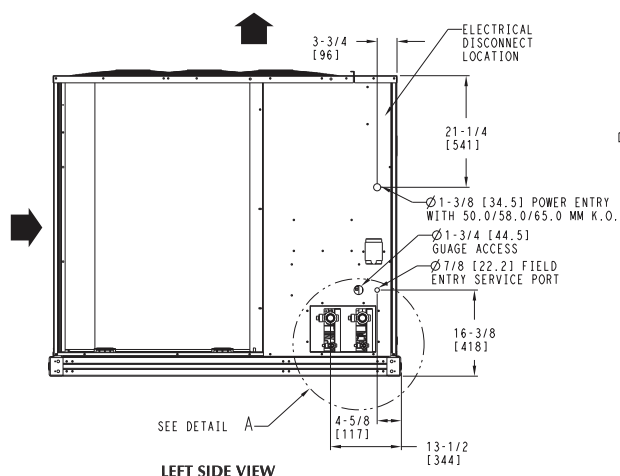
DIRECTION OF AIR FLOW

DIMENSIONS IN [] ARE IN MM

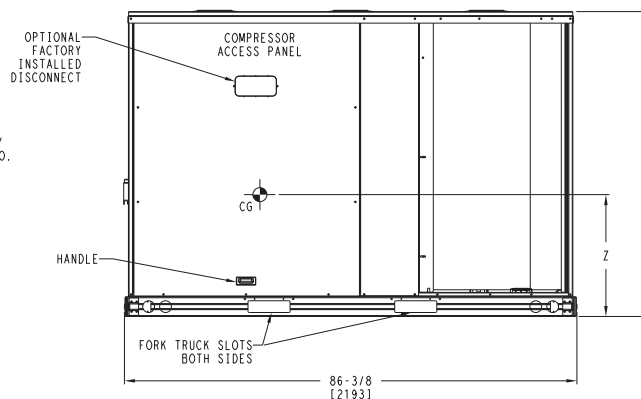
SERVICE VALVE CONNECTIONS				QTY
UNIT	SUCTION	LIQUID		
38AUQ25	1-3/8 [34.9]	1/2 [12.7]		2 EA



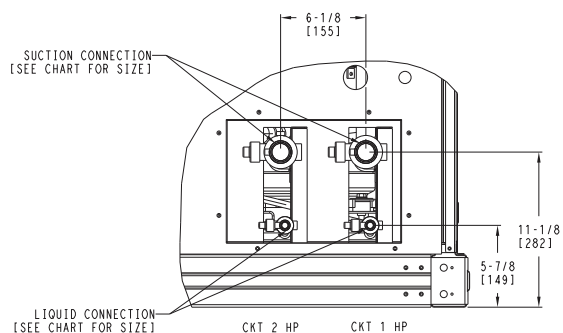
TOP VIEW



LEFT SIDE VIEW



FRONT VIEW



DETAIL A
(NOTE POSITION OF CKT 1)

NOTES:

1. MINIMUM CLEARANCE (LOCAL CODES OR JURISDICTION MAY PREVAIL):
 - A. BOTTOM TO COMBUSTIBLE SURFACES: 0 INCHES.
 - B. OUTDOOR COIL, FOR PROPER AIR FLOW: 36 INCHES ONE SIDE, 12 INCHES THE OTHER. THE SIDE GETTING THE GREATER CLEARANCE IS OPTIONAL.
 - C. OVERHEAD: 60 INCHES, TO ASSURE PROPER OUTDOOR FAN OPERATION.
 - D. BETWEEN UNITS: CONTROL BOX SIDE, 42 INCHES PER NEC.
 - E. BETWEEN UNIT AND UNGROUNDED SURFACES: CONTROL BOX SIDE, 36 INCHES PER NEC.
 - F. BETWEEN UNIT AND BLOCK OR CONCRETE WALLS AND OTHER GROUNDED SURFACES: CONTROL BOX SIDE, 42 INCHES PER NEC.
2. WITH EXCEPTION OF THE CLEARANCE FOR THE OUTDOOR COIL AS STATED IN NOTE 1B, A REMOVABLE FENCE OR BARRICADE REQUIRES NO CLEARANCE.
3. UNITS MAY BE INSTALLED ON COMBUSTIBLE FLOORS MADE FROM WOOD OR CLASS A, B OR C ROOF COVERING MATERIAL.

Fig. 3 — 38AUQ*25 Unit Dimensions

