



Our Five-Point Certification

Ensures every motor meets uncompromising quality standards. So you can be confident you're choosing the right motor for any replacement job.

PERFORMANCE VERIFICATION

RPMS, amps, rotation, temperature rise & capacitor voltage validated.

DESIGN LIFE

Manufactured to precise specs for lifespan of 10+ years with proper installation.

SHIPPING & PACKAGING

Tested to ensure minimal vibration and maximum impact resistance during transit.

LOAD RATING

Thoroughly tested to ensure reliability under maximum load conditions.

SAFETY

UL & CSA certified, all code requirements met.

THE FLEXIBLE TRUCK STOCK MOTOR



TRUST TOTALINE[®]
ON YOUR TRUCK

WWW.TOTALINE.COM

INTRODUCING TOTALINE[®] FLEX ECM REPLACEMENT MOTORS



Universal HVAC/R
Parts and Supplies



Universal HVAC/R
Parts and Supplies

TOTALINE® AFTERMARKET MOTORS offer a full line-up of universal replacement motors to fit your needs. And now we are adding our FLEX ECM Universal Products to the Totaline Motor Portfolio.



Backed by our 5-Point Certification



NEW TOTALINE FLEX16 ECM VARIABLE SPEED REPLACEMENT MOTORS

Replaces 16-Pin 2.0, 2.3 and EON Variable Speed Blower Motors, Using 24v or PWM

- Same connections as OEM
- Adjustable airflow and rotation with EZ Interface
- Uses Existing Mounting Bracket or any 48 Frame Mount
- 50/60 Hz, 1Ph
- Ins Class B
- UL and CSA Recognized

PART	DESCRIPTION
P257-FLEX1662	1/2-1/3HP, 115/208-230V
P257-FLEX1661	3/4HP, 115/208-230V
P257-FLEX1660	1HP, 115/208-230V



TOTALINE® ECM FLEX13 REPLACEMENT

Replaces ECM X13 Constant Torque Blower Motors 5 Speeds, Using 24VAC

Ready to Use out of the Box!

- Easy Installation
- Dual Voltage 115/208-230V
- Automatic Dual Rotation
- 48 Frame, UL and CSA Approved
- 50/60HZ, 1 Phase
- Uses existing OEM Harness

PART	DESCRIPTION
P257-FLEX1376D	1/2HP, 115/208-230
P257-FLEX1377D	3/4HP, 115/208-230
P257-FLEX1378D	1HP, 115/208-230

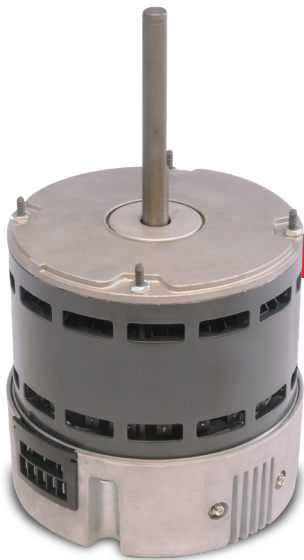


NEW TOTALINE® ECM FLEXPSC REPLACEMENT

Increase condensing unit SEER when replacing PSC motors or replace existing ECM condenser fan motors

- 48 Frame TEAO for Shaft Down mounting
- 50/60 Hz, 1Ph
- Ins Class B
- UL and CSA Recognized

PART	DESCRIPTION
P257-FLEXPSC61	1/3HP, 208-230V



TOTALINE® ECM FLEXPSC UPGRADE FOR PSC

Upgrade Existing Furnace to More Energy Efficient ECM Technology

Easy Install

Connects directly to standard PSC furnace and air-handler boards—fits wide variety of direct drive blower motor applications

- 2 Multi-HP Models Available
- Dual Voltage 115-230V Single Phase
- High Efficiency Design (ECM is 82% efficient versus standard PSC at 60%)
- Upgrade to Constant Airflow with these Benefits:
 - Helps with better air filtration
 - Allows for additional IAQ solutions
 - Provides more even temperatures in the home, reducing room temperature differences by 3°-6°

PART	DESCRIPTION
P257-FLEXPSC50	1/2-1/4HP, 115/208-230V
P257-FLEXPSC51	1 - 3/4HP, 115/208-230V



TRUST TOTALINE® ON YOUR TRUCK