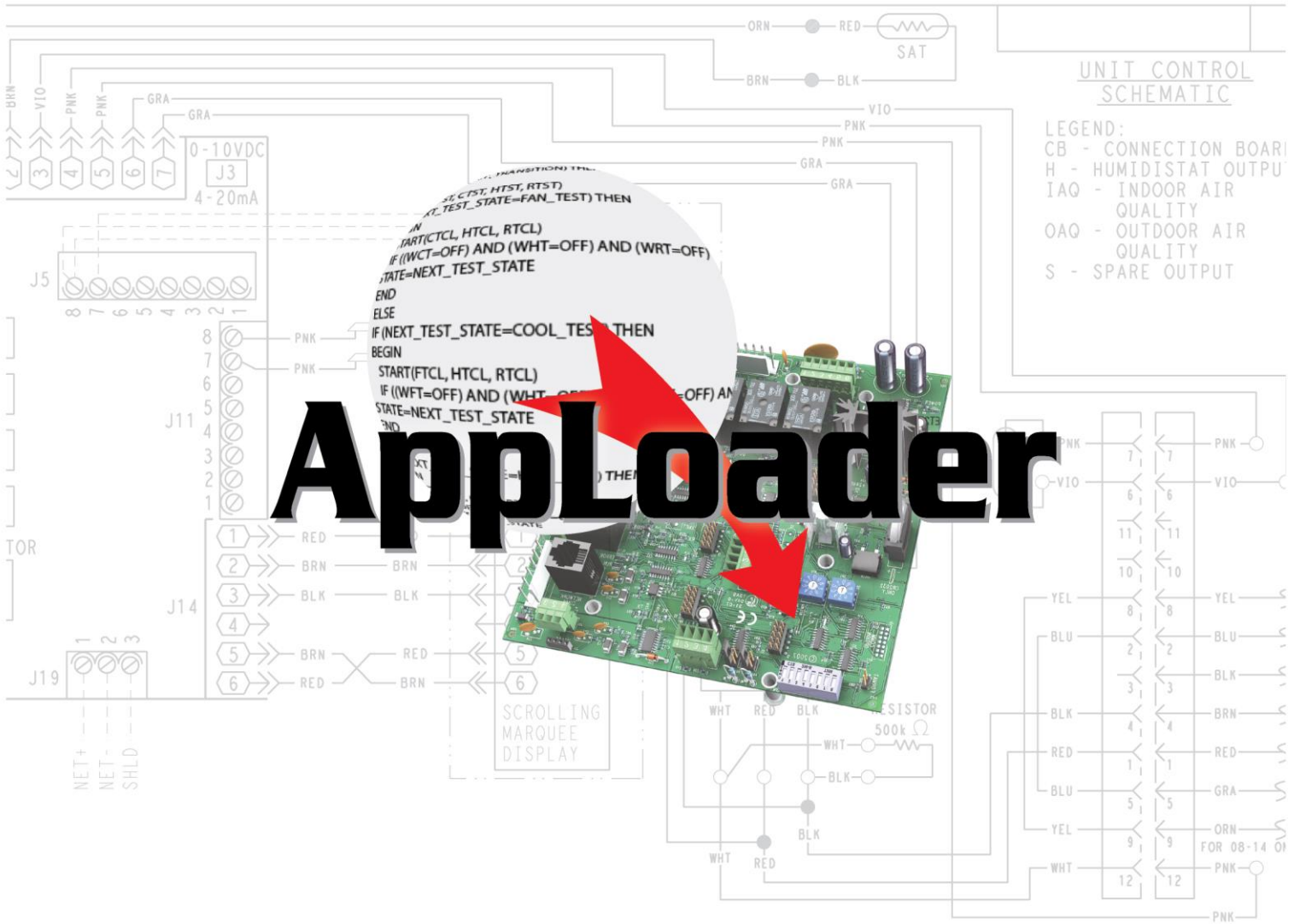




AppLoader v7.0 User Guide





Verify that you have the most current version of this document from www.hvacpartners.com or www.accounts.lvusystems.com or your local Carrier office.

Important changes are listed in **Document revision history** at the end of this document.

CARRIER CORPORATION ©2020. All rights reserved throughout the world. i-Vu is a registered trademark of Carrier Corporation. All other trademarks are the property of their respective owners.



Contents

| | |
|-------------------------------------------------------------------------------------------|-----------|
| Installing AppLoader | 1 |
| Downloading a clipping using an Rnet connection to an Open device | 2 |
| Downloading a clipping using using the Service Port on an i-Vu® XT or TruVu™ device | 3 |
| Downloading a clipping using an IP connection to an Open device | 6 |
| Downloading a clipping using an IP connection to an i-Vu® XT or TruVu™ device | 9 |
| Document revision history | 14 |



Installing AppLoader

AppLoader is a software utility that enables field technicians to restore the original factory settings or install updated files to a controller or router. A clipping may include a driver, control program, graphics, and screen files.

- 1 Make sure your computer has the USB Link driver.

NOTE The USB Link driver is installed with an i-Vu® or Field Assistant v5 or later system. But if needed, you can get the latest driver from <http://www.silabs.com/products/mcu/Pages/USBtoUARTBridgeVCPDrivers.aspx>. Install the driver before you connect the USB Link to your computer.

- 2 Connect the computer to your controller with the USB Link.

- 3 Insert the i-Vu® Tech Tools USB drive into your computer.

- 4 Click **AppLoader** under **Other Installs**.

NOTE If the screen does not automatically appear after inserting the USB drive, navigate to i-Vu_Tools v7.0 on your computer and open the AppLoader folder. Double-click **AppLoader_x.x_windows_setup.exe** to start the installation.

- 5 Follow the **Setup Wizard** and wait for it to finish.

NOTE Place the program on your computer to prevent having to use the USB drive every time you need it.

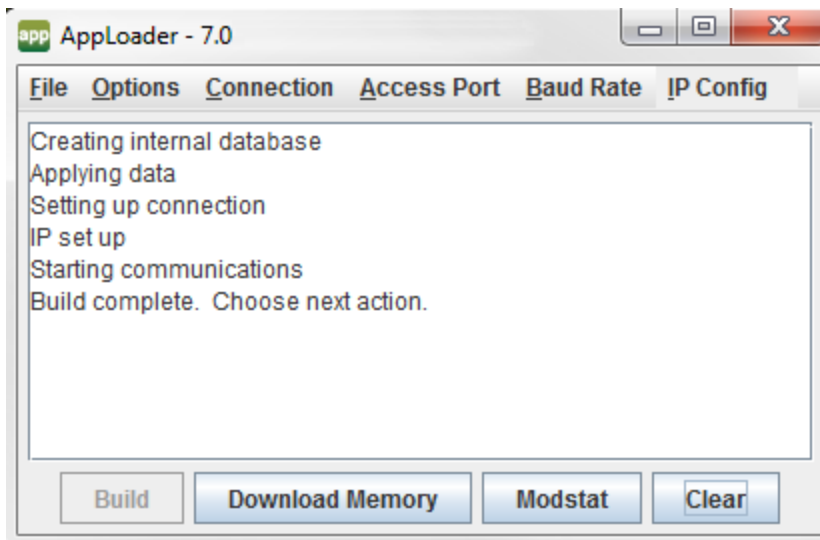
- 6 In the i-Vu_Tools v7.0 folders, double-click **Resources** and open the **Clippings** folder.

- 7 Copy the .clipping files to a folder on your computer.

Downloading a clipping using an Rnet connection to an Open device

From your desktop, click **Start > All Programs > AppLoader x.x** and then click  **AppLoader** or browse to your program location.

- 1 Select **Connection** and check **Rnet**.
- 2 Select **Access Port** and check the COM port for the USB Link.
To find the correct port:
 1. From **Start** or explore, on your computer, right-click **Computer** and select **Manage**.
 2. Select **Device Manager** in the tree on the left.
 3. Click the arrow next to **Ports (COM & LPT1)**.
 4. Your port is listed next to **Silicon Labs USB to UART Bridge**.
- 3 In AppLoader, select **Baud Rate** and check **115200**.
- 4 Select **File > Open**, browse to your clipping folder, select the clipping file, and then click **Open**.
- 5 Click **Build**. Wait for the message that the build is complete.



- 6 Click **Modstat** to verify successful communication. Check your connection if there are problems.
- 7 If communicating properly, click **Download Memory**.
- 8 In the **Set Device ID** popup, make sure **Use factory auto-assign device ID** is checked and click **OK**.
- 9 Wait for the message **Download Successful**.

NOTE Downloads can take up to 10 minutes, depending on the controller.

Downloading a clipping using using the Service Port on an i-Vu® XT or TruVu™ device

To use AppLoader with i-Vu® XT or TruVu™ devices, you can connect to the controller through the Service Port. You must perform the following steps. They are each explained in detail below.


- 1 Enable DHCP on your computer.
- 2 Connect AppLoader to the i-Vu® XT or TruVu™ device's Service Port to download clipping.

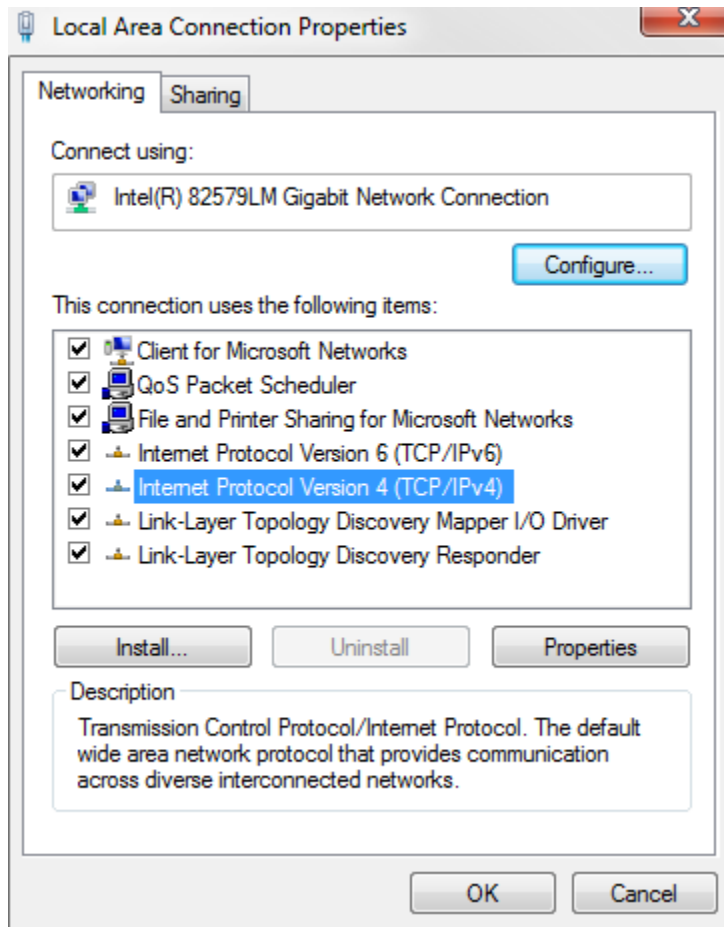


WARNINGS AppLoader will NOT function unless you do the following:

- Disconnect your computer and the i-Vu® XT or TruVu™ device from your building network.
- Shut down the i-Vu® or Field Assistant application that may be running on your computer.
- Turn off the computer's Wi-Fi.
- If you have more than one network interface card (NIC), AppLoader automatically selects the one with the lowest IP address. You must disable the networks that you do not want AppLoader to use.

Step 1: Enable DHCP on your computer

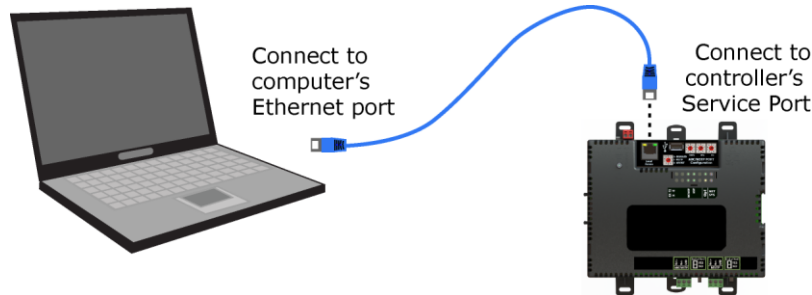
- 1 Click **Start > Control panel > Network and Internet > Network and Sharing Center**.
- 2 Under active networks, double-click the **Local Area Connection** link to open **Local Area Connection Status**.
- 3 Click the **Properties** button  and then double-click **Internet Protocol Version 4 (TCP/IPv4)**.



- 4 Check **Obtain an IP address automatically** and click **OK** to close the window.
- 5 Click **OK** again.
- 6 Click **Close**.
- 7 Leave the **Network and Sharing Center** page open. You will use it again later.

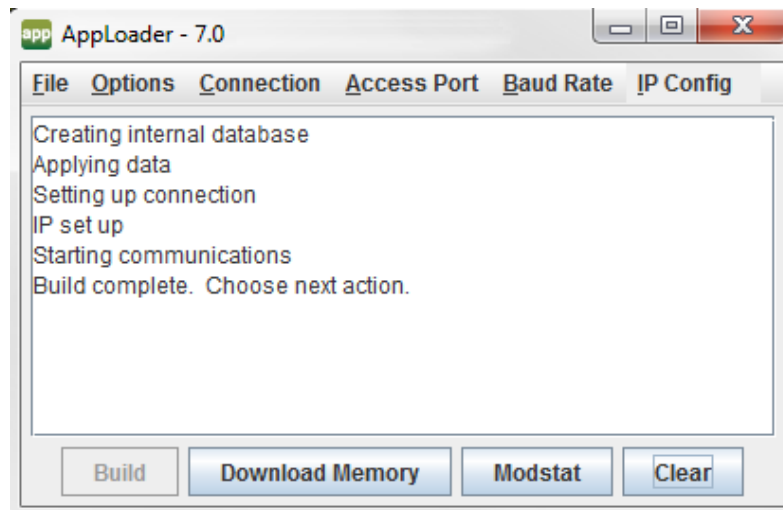
Step 2: Connect AppLoader to the i-Vu® XT or TruVu™ device's Service Port to download clipping

- 1 Connect an Ethernet cable from your computer to the i-Vu® XT or TruVu™ device's Service Port, as shown below.



- 2 Open a web browser on the computer.
- 3 Navigate to <http://local.access> or <http://169.254.1.1> to see the controller setup pages. (?)

NOTE If you do not see the pages, review the previous steps. Check your Ethernet cable and make sure DHCP is set.
- 4 Launch AppLoader.
- 5 Set AppLoader to communicate over IP by clicking **Connection** in the top menu and checking **Service Port**.
- 6 Select **File > Open**, browse to your clipping folder, select the clipping file, and then click **Open**.
- 7 Click **Build**. Wait for the message that the build is complete.



- 8 Click **Modstat** to verify successful communication. Check your connection if there are problems.
- 9 If communicating properly, click **Download Memory**.
- 10 In the **Set Device ID** popup, make sure **Use factory auto-assign device ID** is checked and click **OK**.
- 11 Wait for the message **Download Successful**.

NOTE Downloads can take up to 10 minutes, depending on the controller.
- 12 Close AppLoader.
- 13 Disconnect the cable from the **Service Port**.

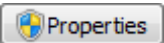
Downloading a clipping using an IP connection to an Open device

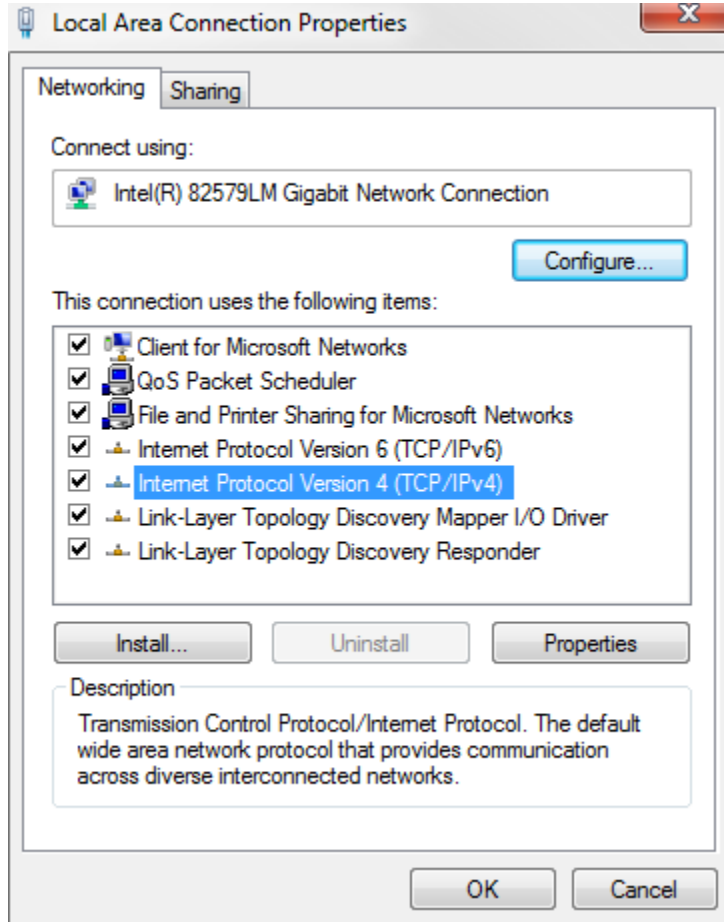
Step 1: Disable DHCP and set device address for default IP address network

When using IP connection, set the device to default IP and place the computer running the AppLoader software on the same subnet.

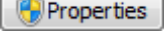


CAUTION You must disable all other network and wireless ports on the computer.

- 1 Click **Start > Control panel > Network and Internet > Network and Sharing Center**.
- 2 Under active networks, double-click the **Local Area Connection** link to open **Local Area Connection Status**.
- 3 Click the **Properties** button  and then double-click **Internet Protocol Version 4 (TCP/IPv4)**.



- 4 Under active networks, double-click the **Local Area Connection** link to open **Local Area Connection Status**.

5 Click the **Properties** button  and then double-click **Internet Protocol Version 4 (TCP/IPv4)**.

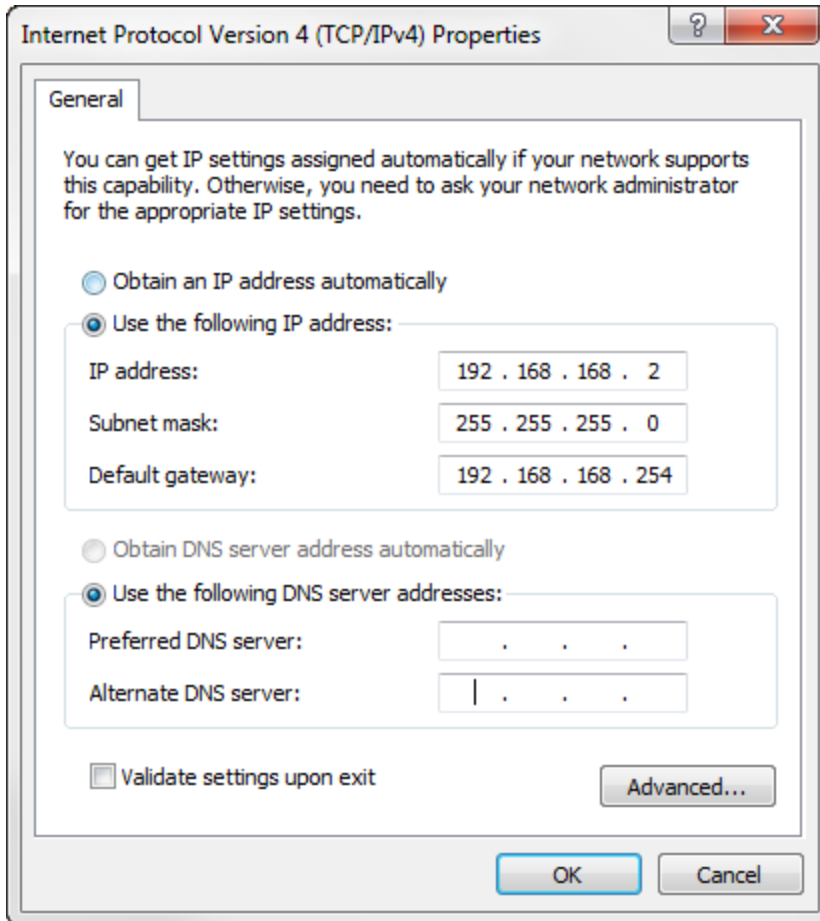
6 Check **Use the following IP address** and enter

- o 192.168.168.2



CAUTION The final digit can be anything except **.1**.

- o 255.255.255.0
- o 192.168.168.254



Internet Protocol Version 4 (TCP/IPv4) Properties

General

You can get IP settings assigned automatically if your network supports this capability. Otherwise, you need to ask your network administrator for the appropriate IP settings.

Obtain an IP address automatically

Use the following IP address:

IP address: 192 . 168 . 168 . 2

Subnet mask: 255 . 255 . 255 . 0

Default gateway: 192 . 168 . 168 . 254

Obtain DNS server address automatically

Use the following DNS server addresses:

Preferred DNS server: . . .

Alternate DNS server: | . . .

Validate settings upon exit

Advanced...

OK Cancel

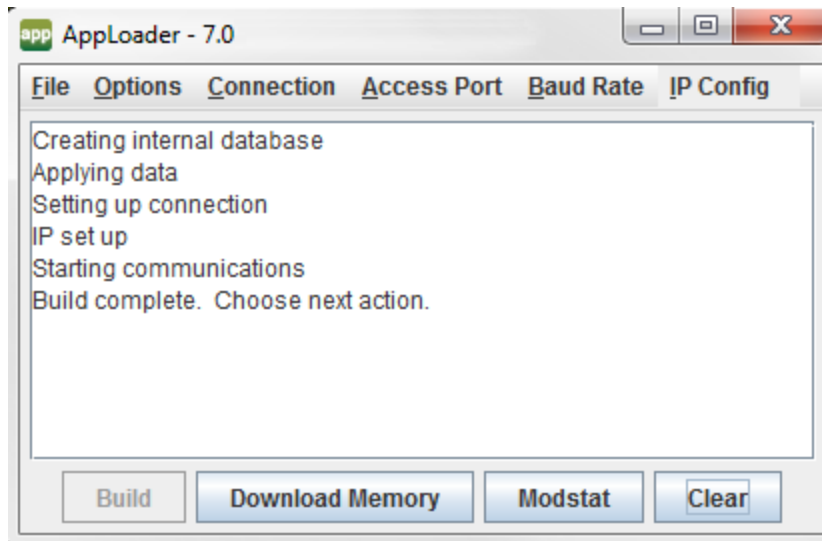
7 Click **OK**.

8 Click **OK**.

9 Click **Close**.

Step 2: Connect AppLoader to Ethernet to download clipping

- 1 Connect the Ethernet cable from your computer to the controller's Ethernet port.
NOTE Use a crossover Ethernet cable or a Hub and 2 straight-through Ethernet cables. Make sure cables are attached before attempting communications.
- 2 Launch AppLoader.
- 3 Set AppLoader to communicate over IP by clicking **Connection** in the top menu and checking **IP**.
- 4 Select **File > Open**, browse to your clipping folder, select the clipping file, and then click **Open**.
- 5 Click **Build**. Wait for the message that the build is complete.



- 6 Click **Modstat** to verify successful communication. Check your connection if there are problems.
- 7 If communicating properly, click **Download Memory**.
- 8 In the **Set Device ID** popup, make sure **Use factory auto-assign device ID** is checked and click **OK**.
- 9 Wait for the message **Download Successful**.
NOTE Downloads can take up to 10 minutes, depending on the controller.
- 10 Close AppLoader.
- 11 Disconnect the cable from the Ethernet port.

Downloading a clipping using an IP connection to an i-Vu® XT or TruVu™ device

To use AppLoader with i-Vu® XT or TruVu™ devices, you can connect over IP.

You must perform all of the following 5 steps. They are each explained in detail below.

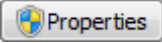
- 1 Enable DHCP on your computer.
- 2 Connect to the i-Vu® XT or TruVu™ device and set its IP address using Service Port.
- 3 Disable DHCP and set static IP address for default IP address network.
- 4 Connect AppLoader to the i-Vu® XT or TruVu™ device's Gig-E Port to download clipping.
- 5 Enable DHCP on your computer and reconfigure your i-Vu® XT or TruVu™ device's original IP address.

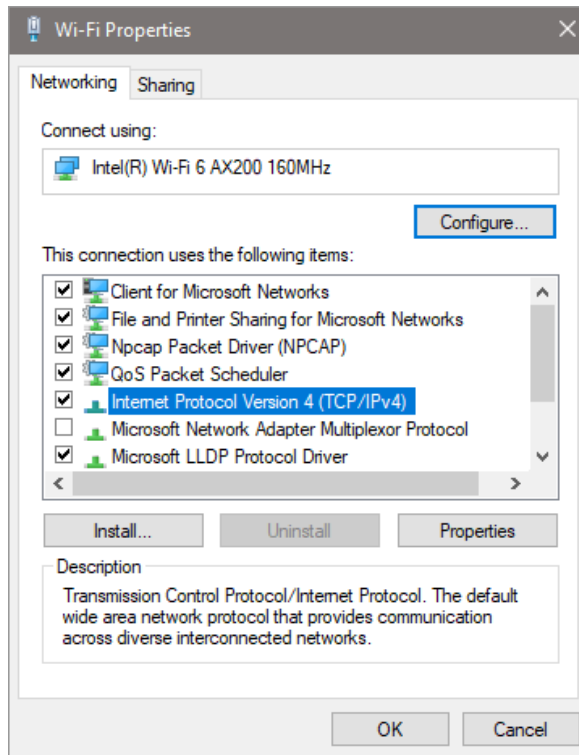


WARNINGS AppLoader will NOT function unless you do the following:

- Disconnect your computer and the i-Vu® XT or TruVu™ device from your building network.
- Shut down the i-Vu® or Field Assistant application that may be running on your computer.
- Turn off the computer's Wi-Fi.
- If you have more than one network interface card (NIC), AppLoader automatically selects the one with the lowest IP address. You must disable the networks that you do not want AppLoader to use.

Step 1: Enable DHCP on your computer

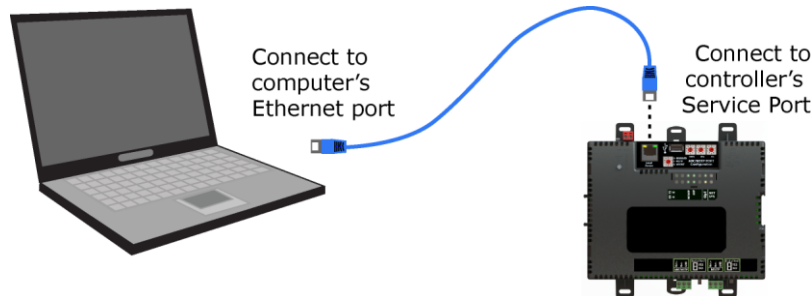
- 1 Click **Start > Control panel > Network and Internet > Network and Sharing Center**.
- 2 Under active networks, double-click the **Local Area Connection** link to open **Local Area Connection Status**.
- 3 Click the **Properties** button  and then double-click **Internet Protocol Version 4 (TCP/IPv4)**.



- 4 Check **Obtain an IP address automatically** and click **OK** to close the window.
- 5 Click **OK** again.
- 6 Click **Close**.
- 7 Leave the **Network and Sharing Center** page open. You will use it again later.

Step 2: Set the IP address of the i-Vu® XT or TruVu™ device using the Service Port


- 1 Connect an Ethernet cable from your computer to the i-Vu® XT or TruVu™ device's Service Port, as shown below.



- 2 Open a web browser on the computer.
- 3 Navigate to <http://local.access> or <http://169.254.1.1> to see the controller setup pages.
- 4 On the **Ports** tab, under **IP Port**, you will see your current configuration. Make note of the settings. You will need them later.
- 5 Check **Custom Static** and type the following addresses:
 - o **IP address:** 192.168.168.1
 - o **Subnet Mask:** 255.255.255.0

NOTE Do not change **Default Gateway**.
- 6 Click **Save**.
- 7 Remove the Ethernet cable to disconnect from the Service Port.

Step 3: Disable DHCP and set device address for default IP address network

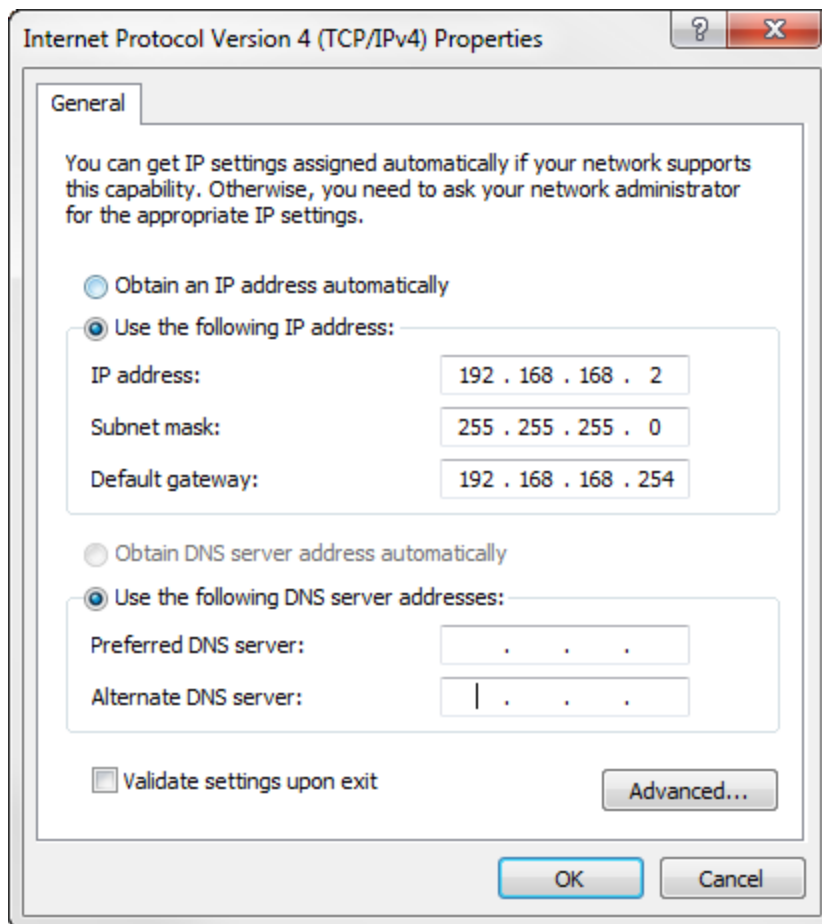
- 1 Return to **Network and Sharing Center**. (see Step 1 for details if you closed it.)
- 2 Under active networks, double-click the **Local Area Connection** link to open **Local Area Connection Status**.
- 3 Click the **Properties** button  and then double-click **Internet Protocol Version 4 (TCP/IPv4)**.
- 4 Check **Use the following IP address** and enter

- o 192.168.168.2



CAUTION The final digit can be anything except .1.

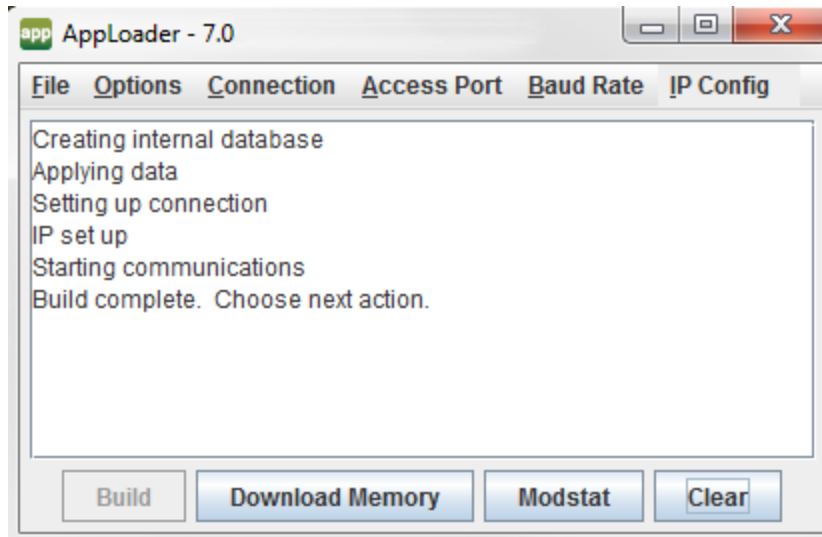
- o 255.255.255.0
- o 192.168.168.254



- 5 Click **OK**.
- 6 Click **OK**.
- 7 Click **Close**.

Step 4: Connect AppLoader to Gig-E Port to download clipping

- 1 Connect the Ethernet cable from your computer to the i-Vu® XT or TruVu™ device's **Gig-E** Port.
- 2 Launch AppLoader.
- 3 Set AppLoader to communicate over IP by clicking **Connection** in the top menu and checking **IP**.
- 4 Select **File > Open**, browse to your clipping folder, select the clipping file, and then click **Open**.
- 5 Click **Build**. Wait for the message that the build is complete.



- 6 Click **Modstat** to verify successful communication. Check your connection if there are problems.
- 7 If communicating properly, click **Download Memory**.
- 8 In the **Set Device ID** popup, make sure **Use factory auto-assign device ID** is checked and click **OK**.
- 9 Wait for the message **Download Successful**.
NOTE Downloads can take up to 10 minutes, depending on the controller.
- 10 Close AppLoader.
- 11 Disconnect the cable from the **Gig-E** Port.

Step 5: Re-enable DHCP on your computer and reconfigure your i-Vu® XT or TruVu™ original IP address

- 1 Follow **Step 1: Enable DHCP on your computer** and close the window.
- 2 Follow steps 1 and 2 in **Step 2: Set the IP address of the device using Service Port**.
- 3 Enter your original IP configuration that you noted.
- 4 Close your browser.
- 5 Disconnect Ethernet cable from Service Port.

Document revision history

Important changes to this document are listed below. Minor changes such as typographical or formatting errors are not listed.

| Date | Topic | Change description | Code* |
|-------------|-------------------------------------------------------------------------------|-----------------------------------------------------------------------------------------------------------------|---------------|
| 12/15/20 | Downloading a clipping using an IP connection to an Open device | Corrected errors. Changed "set static IP address" to "set device address" and 192.168.168.X to 192.168.168.254. | OC-TS-CP-E-JD |
| 4/29/20 | Downloading a clipping using the Service Port on an i-Vu® XT or TruVu™ device | New topic. | X-D |
| | Downloading a clipping using an IP address | Added TruVu™ devices | |

* For internal use only

