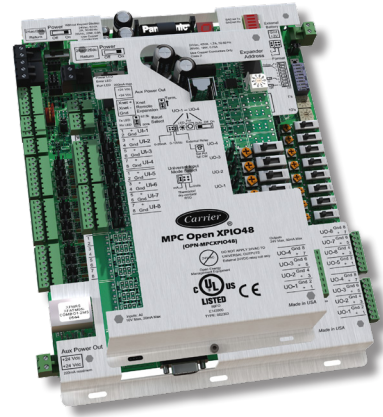




# i-Vu® Building Automation System

## MPC Open XP IO

Part Numbers: OPN-MPCXPIO48, OPN-MPCXPIO816



The MPC Open XP IO expanders add additional I/O point capacity to the MPC Open XP controller. Flexible and versatile, the MPC Open XP controller supports multiple I/O configurations for accomplishing both common and custom HVAC control strategies.

The MPC Open XP controller connects to up to 20 field points directly (8 outputs and 12 inputs), while also supporting up to three MPC XP IO expanders.

Each MPC XP IO48 expander adds support for up to 12 additional field points (4 outputs, 8 inputs), while each MPC XP IO816 expander adds support for up to 24 additional field points (8 outputs, 16 inputs).

When combined, the MPC Open XP controller and its associated MPC XP IO expanders can support up to 92 total points.



### Application Features

- Comprehensive library of factory-engineered control programs available for complete air-side and water-side system control
- Graphically programmable using the Snap programming tool
- Supports Carrier communicating room sensors, which allow for local setpoint adjustment and local overrides

### System Benefits

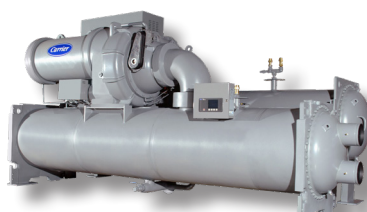
- Fully plug-and-play with the Carrier i-Vu Building Automation System
- Supports demand limiting and optimal start for maximum energy savings
- Compatible with i-Vu Tenant Billing for tracking tenants' after-hours energy usage

### Hardware Features

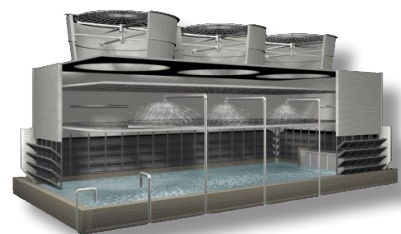
- Expands the MPC Open XP Controller to support up to 92 I/O points
- Removable screw terminals for I/O connections
- First MPC XPIO expander can be mounted directly on MPC XP controller to save panel space



AHUs



Chillers



Cooling Towers



## Specifications

<b>Communication Ports</b>	<b>Xnet Remote Expansion port:</b> For connecting to an MPC Open XP controller via the Xnet network
<b>Inputs</b>	<b>MPCXPIO48:</b> 8 inputs <b>MPCXPIO816:</b> 16 inputs Inputs configurable for 0-5 VDC, 0-10 VDC, 0-20 mA, thermistor (10k Type II), 1k RTD (Platinum, Nickel, or Balco), and Dry Contact. Inputs are 14 bit A/D and support up to 40 pulses per second (12.5 msec min. pulse).
<b>Outputs</b>	<b>MPCXPIO48:</b> 4 outputs <b>MPCXPIO816:</b> 8 outputs Outputs jumper configurable for 0-10 VDC, 0-20 mA (12 bit A/D), or 24 VDC (50 mA relay drive). Outputs have HOA (hand/off/auto) switches, including potentiometer for manual adjustment of analog outputs.
<b>Protection</b>	<b>Incoming power:</b> 2 replaceable 3 Amp Pico® fuses The power, network, and I/O are also protected against voltage transient and surge events.
<b>Status Indicators</b>	LED status of communications, running, errors, and outputs
<b>Listed by</b>	UL-916 (PAZX), cUL-916 (PAZX7), FCC Part 15-Subpart B-Class A, CE EN50082-1997
<b>Environmental Operating Range</b>	<b>Operating:</b> 0 to 140°F (-18 to 60°C) 10 to 90% RH, non-condensing <b>Storage:</b> -24 to 140°F (-30 to 60°C) 10 to 90% RH, non-condensing
<b>Power Requirements</b>	24VAC ± 10%, 50-60Hz 45 VA power consumption 26VDC (25V min, 30V max), 21W Single Class 2 source only, 100 VA or less

## Dimensions

### Overall

**A:** 9 in. (22.9 cm)

**B:** 4-13/16 in. (12.2 cm)

### Mounting

**C:** 8-5/8 in. (21.9 cm)

**D:** 1 in. (2.5 cm)

**E:** 2-13/16 in. (7.1 cm)

**F:** 1/4 in. (.5 cm)

**Depth:** 1-7/16 in. (3.7 cm)

**Weight:** 13.3 oz. (.377 kg)

