

# INSTALLATION QUICK START GUIDE

## MULTI SENSOR (7C-SE-C72X-X)

### INTRODUCTION

The Multi Sensor possesses a high precision Occupancy, CO2, temperature, and humidity sensor that is pre-calibrated from the factory. The Multi-Sensor is easily mounted on a wall the grommet provided. The Multi-Sensor can be daisy-chained using the proprietary 1-wire protocol to communicate with a master node device such as a SmartNode.

### PACKAGE CONTENTS

- Multi-Sensor
- Mounting accessories
- Sensor Bus cable 30ft in length

Scan this QR code to get a more detailed version of the Installation Guide



### SPECIFICATIONS

Power	3-wire interface powered at 3.3V with a maximum current limit of 30mA
Accuracy	Temperature (typical +/- 1°F (0.5°C), Humidity (typical +/- 2% RH), Occupancy @ 8ft height, 100 deg cone angle, CO2 +/- 75 ppm at 400 ~ 10000 ppm
Protection	Protection: IP 20, NEMA Type 1 Pollution grade: 2 Certification: ROHS
Communication	Sensor bus for daisy-chained sensor communication
Long Term Drift	Humidity < 0.25%RH/yr Temperature <0.03 °C/yr
Mounting	Firmly on the Wall/Ceiling. A torque not exceeding 0.2Nm is to be used to fix the device.
Operating temperature	Operating Environment: 32°F to 122°F
Storage temperature	14°F to 158 °F



# MOUNTING

1. Drill a hole of dia 25mm (1") and mount the Multi Sensor grommet (Figure 1) using a toggle bolt grommet. Make sure the level lines on the grommet are parallel to the floor.

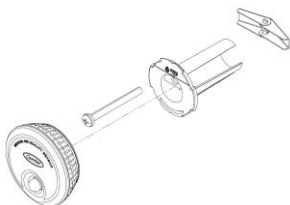


Figure 1

2. Connect the Sensor Bus cable through the grommet/grommet screw mounting to the Multi Sensor. Refer to Figures 2 to connect the wire to the multi-sensor.

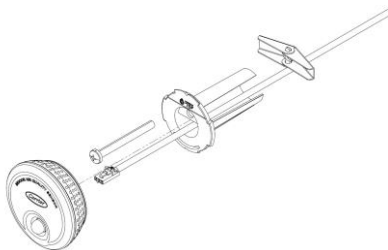


Figure 2

3. To mount the Multi Sensor on the grommet (Screw held or Toggle held), lock the top portion of the Multi Sensor in the lock clips and push the bottom portion of the device to lock it in place.

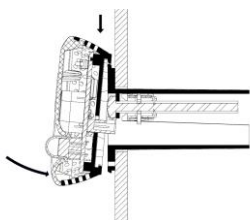


Figure 3

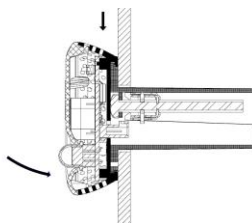


Figure 4

4. To remove the device from the installed location, use a simple tool with a dia of less than 1/8" (3mm) and push it upwards to release the locking clip on the grommet. While doing so, pull the Multi Sensor away from the grommet mount.

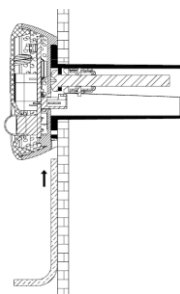


Figure 5

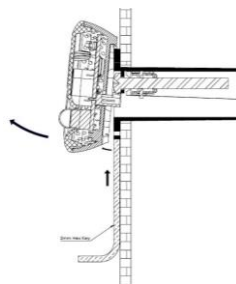


Figure 6

## CARRIER CLIMAVISION TECHNICAL SUPPORT

Installation and servicing of Control Systems can be hazardous due to electrical components. Only trained and qualified service personnel should install, repair or service control system components.

For more information on wiring, commissioning, or usage of the ClimaVision product line, please refer to any documentation provided with the job. If no documentation was provided with the job, please use the ClimaVision Help Center ([support.climavision.com](http://support.climavision.com)) where you can find application specific wiring schematics and helpful user guides and videos or scan the QR code here:



Scan this QR code to  
get a more detailed  
version of the  
Installation Guide

If you need help beyond that, please reach out to your local Carrier distributor for support.

