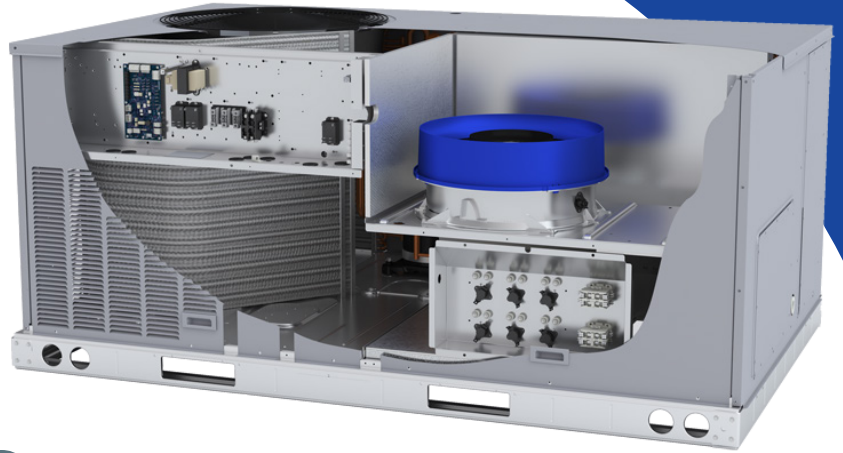




NEW

Coming Mid-2020

PACKAGED HEAT PUMPS



The industry's first beltless direct-drive vane axial fan for rooftop units



50GCQ 3 to 5 Ton Models - 16 SEER



**50FCQ 3 to 5 Ton Models - 14 SEER
50FCQ 6 Ton Models - 15.0 IEER**

Vane Axial Beltless Indoor Fan System

- Slow Speed Ramp Up
- Quiet Operation
- Direct Drive ECM Motor
- High Static Capability
- Easy Fan Set Up and Adjustment
- Up to 40% more energy efficient
- 75% fewer moving parts

Scroll Compression With Single Circuit Design

- Fully Active Evaporator Coil Design
- 2 Stage Capacity Control All 50GCQ and 50FCQ 6 Ton Models

Reliable Enhanced Round Tube Plate Fin Coil Design

- 5/16" Condenser Coil Helps Reduce Refrigerant Charge
- Environmental Coating Options Available

Electro Mechanical or SystemVu™ Controls

- Base controls with Electro Mechanical and Time/Temp Defrost
- SystemVu™ Intelligent Integrated Controls with Key Pad and Display
- Full Range of Factory Certified Options and Accessories Available



NEW

PACKAGED HEAT PUMPS

Coming Mid-2020

**WeatherMaster®**
with EcoBlue™ Technology

50GCQ 3 to 5 Ton Models - 16 SEER

Nom. Cooling Tons	3	4	5
Model Number	50GCQ 04	50GCQ 05	50GCQ 06
SEER	16.2	16.2	16.2
HSPF	8.3	8.3	8.3
Cooling Stages	2	2	2
Blower Type - Motor	Vane Axial - ECM	Vane Axial - ECM	Vane Axial - ECM
Clg. Metering Device	TXV	TXV	TXV
Cabinet Size (LxWxH) inches	74 x 47 x 33	74 x 47 x 41	74 x 47 x 41
Net Unit Weight	475	590	596
Suction Line Accumulator	Yes	Yes	Yes
Elect Heat (Kw - Range)	4.0 - 15.0	6.0 - 20.0	6.0 - 25.0

**WeatherMaster®**
with EcoBlue™ Technology

50FCQ 3 to 5 Ton Models - 14 SEER, 50FCQ 6 Ton Models - 15.0 IEER

Nom. Cooling Tons	3	4	5	6
Model Number	50FCQ 04	50FCQ 05	50FCQ 06	50FCQ 07
SEER (IEER)	14.3	14.3	14.3	(15.0)
HSPF (COP Hi)	8.2	8.2	8.2	(3.5)
Cooling Stages	1	1	1	2
Blower Type - Motor	Vane Axial - ECM	Vane Axial - ECM	Vane Axial - ECM	Vane Axial - ECM
Clg. Metering Device	Fixed	Fixed	Fixed	TXV
Cabinet Size (LxWxH) inches	74 x 47 x 33	74 x 47 x 33	74 x 47 x 41	74 x 47 x 41
Net Unit Weight	467	473	584	589
Suction Line Accumulator	Yes	Yes	Yes	Yes
Elect Heat (Kw - Range)	4.0 - 15.0	6.0 - 20.0	6.0 - 25.0	6.0 - 25.0