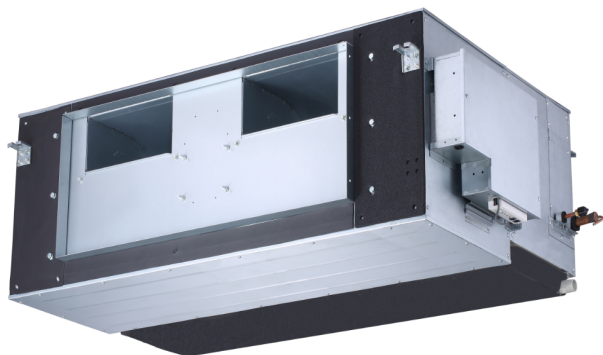


VRF Indoor Unit 40VMH072---3—High Static Duct



Submittal Data

Job Name _____ Location _____
Tag _____



STANDARD FEATURES

- Ducted Supply and Return Opening
- Three Fan Speeds - High, Medium and Low
- Built in EXV (Electronic Expansion Valve) for Install Ease

INDOOR UNIT MODEL		40VMH072---3
PERFORMANCE		
Cooling Rated Capacity	Btu/h	73,010
Sensible Cooling Capacity	Btu/h	47,670
Heating Rated Capacity	Btu/h	81,000
Airflow (H / M / L)	CFM	2235 / 1794 / 1559
Sound Pressure (H / M / L)	dBA	55.9 / 52.2 / 48.7
ELECTRICAL		
Power Supply	V/Ph/Hz	208-230/1/60
Indoor Fan Motor Power Consumption (Input)	W	245 + 245
Minimum Circuit Amps (MCA)	A	9.6
Maximum Overcurrent Protection	A	15.0
Motor Type		DC

PHYSICAL DATA		
Pipe Connection Size - Liquid	in.	3/8 (OD)
Pipe Connection Size - Suction	in.	7/8 (OD)
Pipe Connection Size - Drain	in.	1-5/8 (OD)
Minimum External Static Pressure (ESP) (Factory Default)	in. wg	0.2
Maximum External Static Pressure (ESP)	in. wg	1.0
Refrigerant		R-410A
Unit Width	in.	56-11/16
Unit Height	in.	20
Unit Depth	in.	36-3/8
Net Weight	lb	254.2

ACCESSORIES (Optional)

- ☐ Wireless Remote Controller 40VM900001
- ☐ Wired Remote Controller - Non-Prog. 40VM900002
- ☐ Wired Remote Controller - Prog. 40VM900003
- ☐ Touch Screen Wired Controller 40VM900005
- ☐ Touch Screen Central Controller 40VM900006

DIMENSIONAL DRAWING INDOOR UNIT HIGH STATIC DUCT 40VMH072---3

Unit: inches (mm)

