

# SMMS-e / SHRM-e VRF Indoor Unit MMD-AP0961HF2-UL—Outside Air Unit

**TOSHIBA**  
*Carrier*

## Submittal Data

Job Name \_\_\_\_\_ Location \_\_\_\_\_  
Tag \_\_\_\_\_



### STANDARD FEATURES

- R-410A Refrigerant
- Three sizes from 48,000 to 96,000 Btu/h
- Rear return
- 208/230 V PSC (Permanent Split Capacitor) motor
- Five-year parts limited warranty

INDOOR UNIT MODEL	MMD-AP0961HF2UL	
PERFORMANCE		
Cooling Rated Capacity	Btu/h	96,000
Heating Rated Capacity	Btu/h	59,000
Fan Type (Qty)	Centrifugal (2)	
Standard Airflow	CFM	1237
Sound Pressure (H / M)	208V (dBA)	47 / 45
	230V (dBA)	50 / 49
External Static Pressure (ESP) (208V)	in. WG	0.41 (Factory Default)
	in. WG	0.67 (Max.)
External Static Pressure (ESP) (230V)	in. WG	0.85 (Factory Default)
	in. WG	1.01 (Max.)
ELECTRICAL		
Power Supply	V/Ph/Hz	208-230/1/60
Power Consumption (208V / 230V)	kW	0.64 / 0.66
Full Load Amps (FLA)	A	3.80
Minimum Circuit Amps (MCA)	A	4.76
Maximum Overcurrent Protection	A	15.0

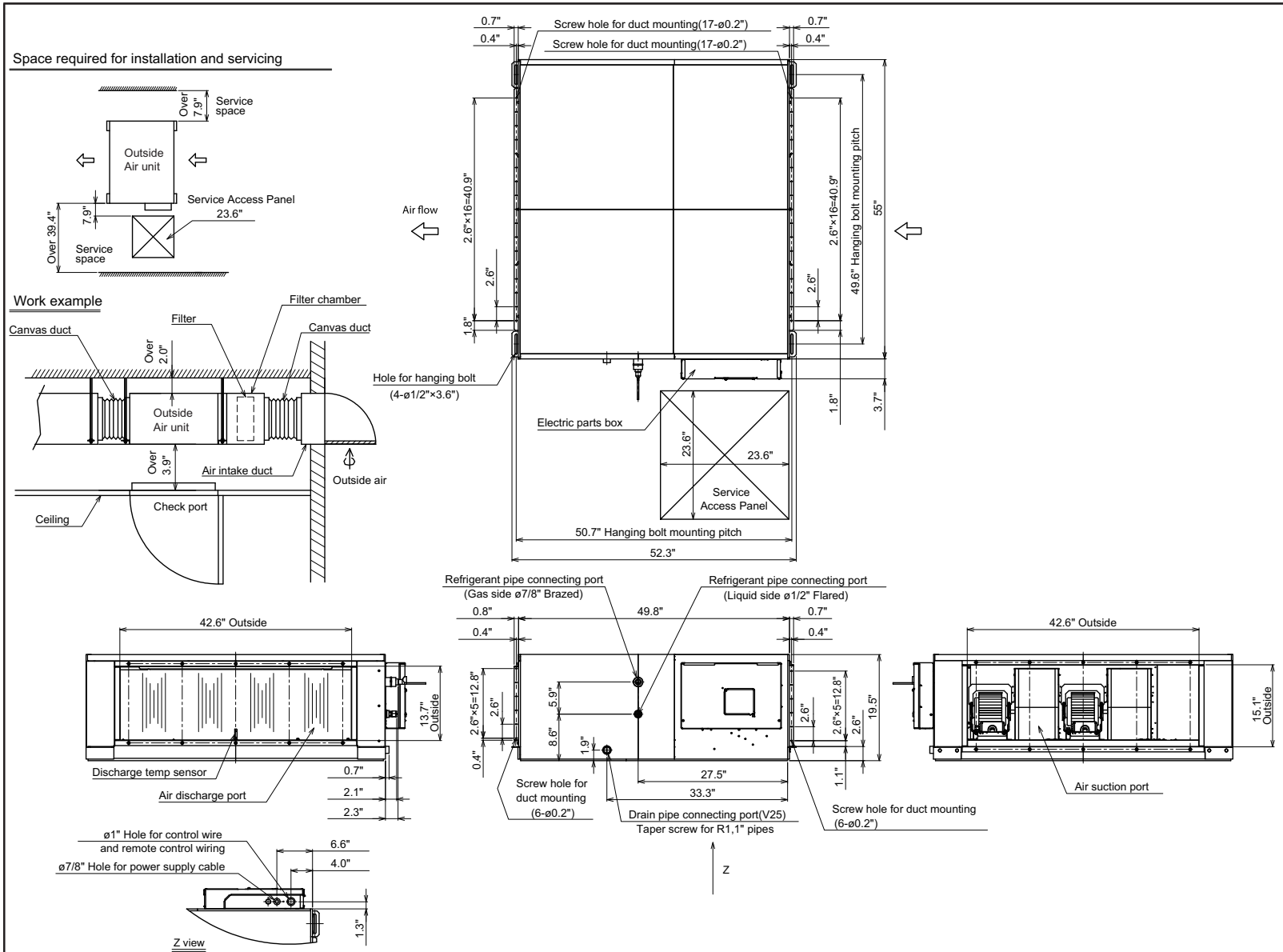
<b>MOTOR</b>		
Motor Type	PSC	
Motor Watts	W	160x2
<b>PHYSICAL DATA</b>		
Pipe Connection Size - Liquid	in.	1/2 (OD)
Pipe Connection Size - Suction	in.	7/8 (OD)
Pipe Connection Size - Drain	in.	1-1/4 (OD)
Refrigerant	R-410A	
Unit Width	in.	55
Unit Height	in.	19-1/2
Unit Depth	in.	49-3/4
Net Weight	lb	349

### ACCESSORIES

- ☐ Wired Remote Controller (7-Day Programmable) - RBC-AMS54E-UL
- ☐ Simple Wired Remote Control - RBC-AS41UL
- ☐ Stand Alone Receiver with Wireless Remote TCB-AX32UL
- ☐ Remote Sensor TCB-TC41LUL
- ☐ Wired Remote Controller - RBC-AMT32UL

## DIMENSIONAL DRAWING

### OUTSIDE AIR UNIT – MMD-AP0961HF2-UL



© 2021 Carrier Corporation. All rights reserved.

Edition Date: 04/21  
Printed in U.S.A.

**Form No: MMD-AP0961HF2UL\_02**  
Replaces: MMD-AP0961HF2UL\_01

**Manufacturer reserves the right to discontinue, or change at any time, specifications or designs without notice and without incurring obligations.**

CUT ALONG DOTTED LINE

CUT ALONG DOTTED LINE