

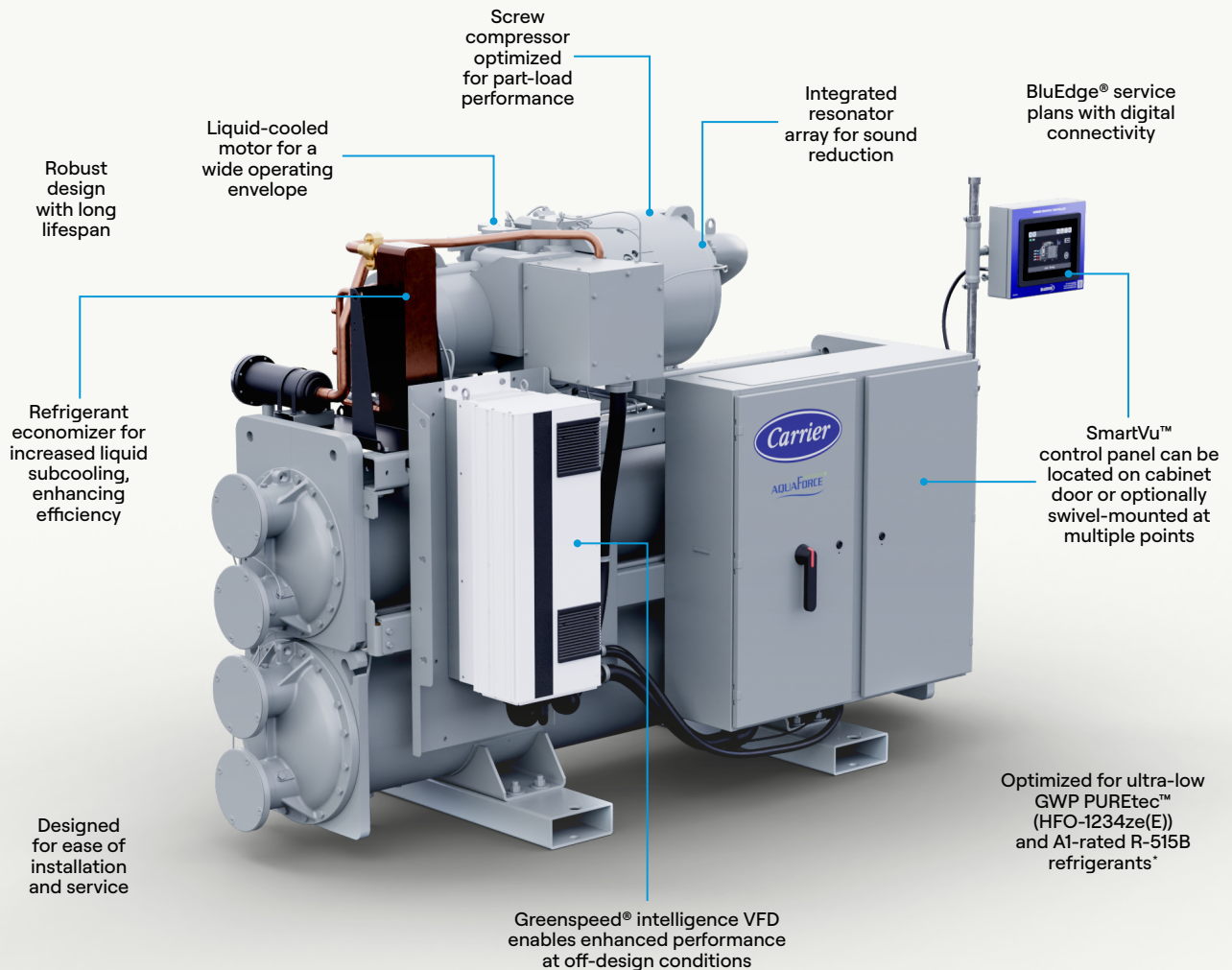
Carrier



**AQUA**FORCE<sup>®</sup> greenspeed

23XW Chillers  
23XQ Heat Pumps

Optimized for what matters



### 23XW Water-Cooled Screw Chillers

**Cooling Capacity\*\***  
75 - 200 Tons (Nominal)  
(264 - 703 kW)

### 23XQ Water-Sourced Screw Heat Pumps

**Heating Capacity\*\*\***  
960 - 2,900 MBH (Nominal)  
(281 - 850 kW)

**Heating Capability**  
140°F (60°C)

## Introducing the new AquaForce® 23XW chillers and 23XQ heat pumps

Engineered to support your operational efficiency and sustainability goals

Evolving environmental and legislative landscapes are making sustainability and decarbonization even more critical than ever before. That's why Carrier is proud to introduce the latest additions to our flagship line of AquaForce water-cooled screw chillers and water-sourced heat pumps. With a number of purposeful innovations, the new AquaForce 23XW chillers and 23XQ heat pumps deliver the efficiency, capacity,

connectivity, reliability and sustainability needed to address cooling and heating needs while supporting your decarbonization efforts.

At Carrier, we are committed to creating a better future for people and the planet. Because if it matters to you, your building and our world, **we're optimized for it.**

\*R-1234ze(E) has an AR4 GWP<sub>100</sub> of 0.97, whereas R-515B has an AR4 GWP<sub>100</sub> of 287. GWP values are based on the Intergovernmental Panel on Climate Change (IPCC) Fourth Assessment Report (AR4), which is the basis of regulations such as the Kigali Amendment. Lower GWP refrigerants refer to refrigerants with a reduced GWP relative to prior models and/or alternatives. GWP is a measure of how much heat a greenhouse gas traps in the atmosphere over a specific time period relative to carbon dioxide.

\*\*Based on AHRI standard conditions.

\*\*\*Based on AHRI standard conditions for water-cooled heating under high conditions.



### Optimized for lower GWP refrigerants

Designed specifically for ultra-low GWP PUREtec™ (HFO-1234ze(E)) and A1-rated R-515B refrigerants\*



### Optimized for efficiency

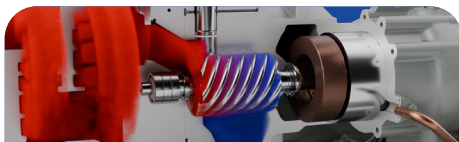
Greenspeed® intelligence variable frequency drive (VFD) provides better seasonal efficiency and load matching



### Optimized for heating decarbonization

The AquaForce 23XQ heat pump provides 140°F (60°C) heating capability to support your decarbonization efforts

## Innovative features and options that take optimization even further



### Patented Screw Compressor

Next-generation variable-speed screw compressor increases efficiency while reducing sound, all without drastically impacting footprint. A built-in variable volume index (Vi) control valve ensures optimal full- and part-load performance, while its long bearing life supports longevity and durability.



### Greater Support and Peace of Mind

BluEdge® service plans are powered by digital connectivity through Abound™ HVAC Performance for continuous monitoring, real-time data and actionable insights to ensure your equipment's peak performance and longevity.



### Carrier SmartVu™ Controls

Carrier SmartVu control panel for intelligent control of critical aspects of your heating or cooling system, along with easier tracking and analysis of operational data.

The control panel is located in the cabinet door as standard but has corner-mounting options to meet your specific requirements.



### Adaptive Performance

The 23XW and 23XQ can react to changes in the system at a rate of up to 70% per minute, allowing greater flexibility and potentially reducing loop volume requirements.



### Greenspeed® Intelligence Variable Frequency Drive (VFD)

An air-cooled VFD enables variable-speed operation, providing enhanced performance and efficiency at off-design conditions. The VFD enclosure protects power electronics from airborne contaminants.



### Refrigerant Options

Available with your choice of ultra-low GWP PUREtec™ (HFO-1234ze(E)) or A1-rated R-515B refrigerant.



### Condenser and Evaporator

High-performance tubing, low waterside pressure drop and integral subcooling provide high efficiency.



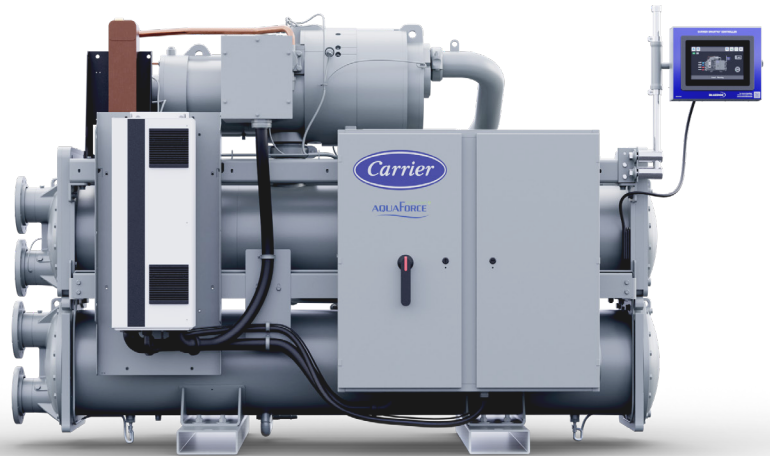
### Economizer

Compact brazed plate economizer increases refrigerant liquid subcooling, enhancing efficiency.

\*R-1234ze(E) has an AR4 GWP<sub>100</sub> of 0.97, whereas R-515B has an AR4 GWP<sub>100</sub> of 287. GWP values are based on the Intergovernmental Panel on Climate Change (IPCC) Fourth Assessment Report (AR4), which is the basis of regulations such as the Kigali Amendment. Lower GWP refrigerants refer to refrigerants with a reduced GWP relative to prior models and/or alternatives. GWP is a measure of how much heat a greenhouse gas traps in the atmosphere over a specific time period relative to carbon dioxide.

## Benefits at a glance

- Greenspeed® intelligence VFD provides increased seasonal efficiency and load matching
- Optimized for ultra-low GWP PUREtec™ (HFO-1234ze(E)) and A1-rated R-515B refrigerants for long-term low environmental impact\*
- Robust, reliable screw compressor is optimized for part-load performance to ensure high efficiency at off-design conditions
- Carrier SmartVu™ controls allow intelligent monitoring of all aspects of the cooling and heating system
- Abound™ HVAC Performance offers continuous monitoring, real-time data and predictive insights through BluEdge® service plans



### AquaForce 23XW Water-Cooled Screw Chillers

#### Cooling Capacity\*\*

75 - 200 Tons (Nominal)  
(264 - 703 kW)

### AquaForce 23XQ Water-Sourced Screw Heat Pumps

#### Heating Capacity\*\*\*

960 - 2,900 MBH (Nominal)  
(281 - 850 kW)

#### Heating Capability

140°F (60°C) to support  
heating decarbonization

Ask your local Carrier expert about the AquaForce 23XW chillers and 23XQ heat pumps and a full range of Carrier commercial HVAC system solutions.



Service & Rentals

Equipment

Controls

\*R-1234ze(E) has an AR4 GWP<sub>100</sub> of 0.97, whereas R-515B has an AR4 GWP<sub>100</sub> of 287. GWP values are based on the Intergovernmental Panel on Climate Change (IPCC) Fourth Assessment Report (AR4), which is the basis of regulations such as the Kigali Amendment. Lower GWP refrigerants refer to refrigerants with a reduced GWP relative to prior models and/or alternatives. GWP is a measure of how much heat a greenhouse gas traps in the atmosphere over a specific time period relative to carbon dioxide.

\*\*Based on AHRI standard conditions.

\*\*\*Based on AHRI standard conditions for water-cooled heating under high conditions.



23XW Only

©2025 Carrier. All Rights Reserved.

Manufacturer reserves the right to discontinue, or change at any time, specifications or designs without notice or without incurring obligations. Claims noted may not be available on every model. A Carrier expert can provide guidance regarding your specific application needs. **23XW:** Water-cooled chillers within the scope of the AHRI WCCL certification program are certified in accordance with the AHRI Water-Cooled Water-Chilling and Heat Pump Water-Heating Packages Certification Program, which is based on AHRI Standard 550/590 (I-P) and AHRI Standard 551/591 (SI). Certified units may be found in the AHRI Directory at <http://www.ahridirectory.org>. **23XQ:** Outside the scope of AHRI Water-Cooled Water-Chilling and Heat Pump Water-Heating Packages Certification Program or not optionally certified, but is rated in accordance with AHRI Standard 550/590 (I-P) and AHRI Standard 551/591 (SI). All trademarks and service marks referred herein are property of their respective owners. Cat. No. 04-811-51017



[carrier.com/optimized](http://carrier.com/optimized)