

SMMS-e Dual VRF Outdoor Unit MMY-AP2166HT6P-UL - Heat Pump

TOSHIBA
Carrier

Submittal Data

Job Name _____ Location _____
Tag _____



SMMS-e VRF Heat Pump Features

- 10 and 8-ton modules are twinned to form a 18-ton system
- Modules have 2 inverter-driven twin rotary compressors
- Backup capability due to multiple compressors
- Compressor speed varied in 0.1 Hz increments for comfort and efficiency
- Direct drive, inverter-driven 64-step outdoor motor
- 985 ft (300 m) actual total system piping (liquid line)
- 623 ft (190 m) actual piping length from outdoor unit to furthest fan coil

- Up to 330 ft (100 m) control wiring between outdoor units
- Up to 6560 ft (2000 m) control wiring between the outdoor unit and indoor units
- Operating temperature range
Cooling (db): 14 to 122 F (–10 to 50 C)
Heating (wb): –13 to 60 F (–25 to 15.6 C)
- Protection: high pressure switch, low pressure sensor and switch, process controller board fuse, inverter overload protection
- 7-year compressor limited warranty, 5-year parts limited warranty

Header Unit Model	MMY-MAP1206HT6P-UL	
Follower Unit Model	MMY-MAP0966HT6P-UL	
PERFORMANCE		
Rated Cooling Capacity	Btu/h	206,000
Rated Heating Capacity	Btu/h	232,000
Maximum Total Connected Indoor Unit Capacity*		Up to 150%
COOLING EFFICIENCY†		
EER/IEER, Ducted FCUs		12.10 / 20.30
EER/IEER, Ductless FCUs		12.00 / 24.60
HEATING EFFICIENCY†		
COP at 47 F, Ducted FCUs		3.93
COP at 47 F, Ductless FCUs		3.90
Fan Type (Qty)		Propeller (2)
Airflow, Standard Range	CFM	7480 + 7480
Twinned System Sound Pressure, Cooling/Heating	dBA	64/64.5
External Static Pressure**	in. wg	0.16
ELECTRICAL		
Power Supply	V/Ph/Hz	460/3/60
Minimum Circuit Amps (MCA)††	A	23 + 20
Recommended Fuse Size††	A	25 + 25

LEGEND

db	— Dry Bulb
COP	— Coefficient of Performance
EER	— Energy Efficiency Ratio
FCU	— Fan Coil Unit
IEER	— Integrated Energy Efficiency Ratio
wb	— Wet Bulb

COMPRESSORS		
Type (Number)	Inverter Twin Rotary (4)	
Motor Output	kW	2 x 4.0 + 2 x 3.0
FAN MOTOR		
Motor Type (Steps)	Inverter Direct Driven (64)	
Motor Output	kW	1.0 + 1.0
PHYSICAL DATA		
Pipe Connection Size - Liquid (High Pressure)***	in.	3/4 (Flare)
Pipe Connection Size - Gas (Low Pressure)***	in.	1-3/8 (Brazed)
Balance	in.	3/8 (Flare)
Refrigerant	R-410A	
Factory Charge†††	lb	2 x 25.4
External Finish	Munsell 1Y8.5/0.5	
Header Unit/Follower Unit Width	in.	47-9/16 / 47-9/16
Header Unit/Follower Unit Height	in.	72-7/8 / 72-7/8
Header Unit/Follower Unit Depth	in.	30-11/16 / 30-11/16
Header Unit/Follower Unit Net Weight	lb	684 / 684
REQUIRED ACCESSORY		
Twining Kit 1 and 2	RBM-BT14UL	

*When total connected indoor unit capacity exceeds 135%, number and types of indoor units are limited.

†Rated per AHRI (Air-Conditioning, Heating and Refrigeration Institute) 1230 Standard. Cooling: Indoor 80 F (27 C) db/67 F (20 C) wb; Outdoor 95 F (35 C) db

Heating: Indoor 70 F (21 C) db; Outdoor 47 F (8 C) db/43 F (6 C) wb

**Requires setting by DIP switches.

††Separate power supply required. MCA and fuse size shown for each unit.

***Main pipe size leaving twinning kit.

†††Additional charge required.

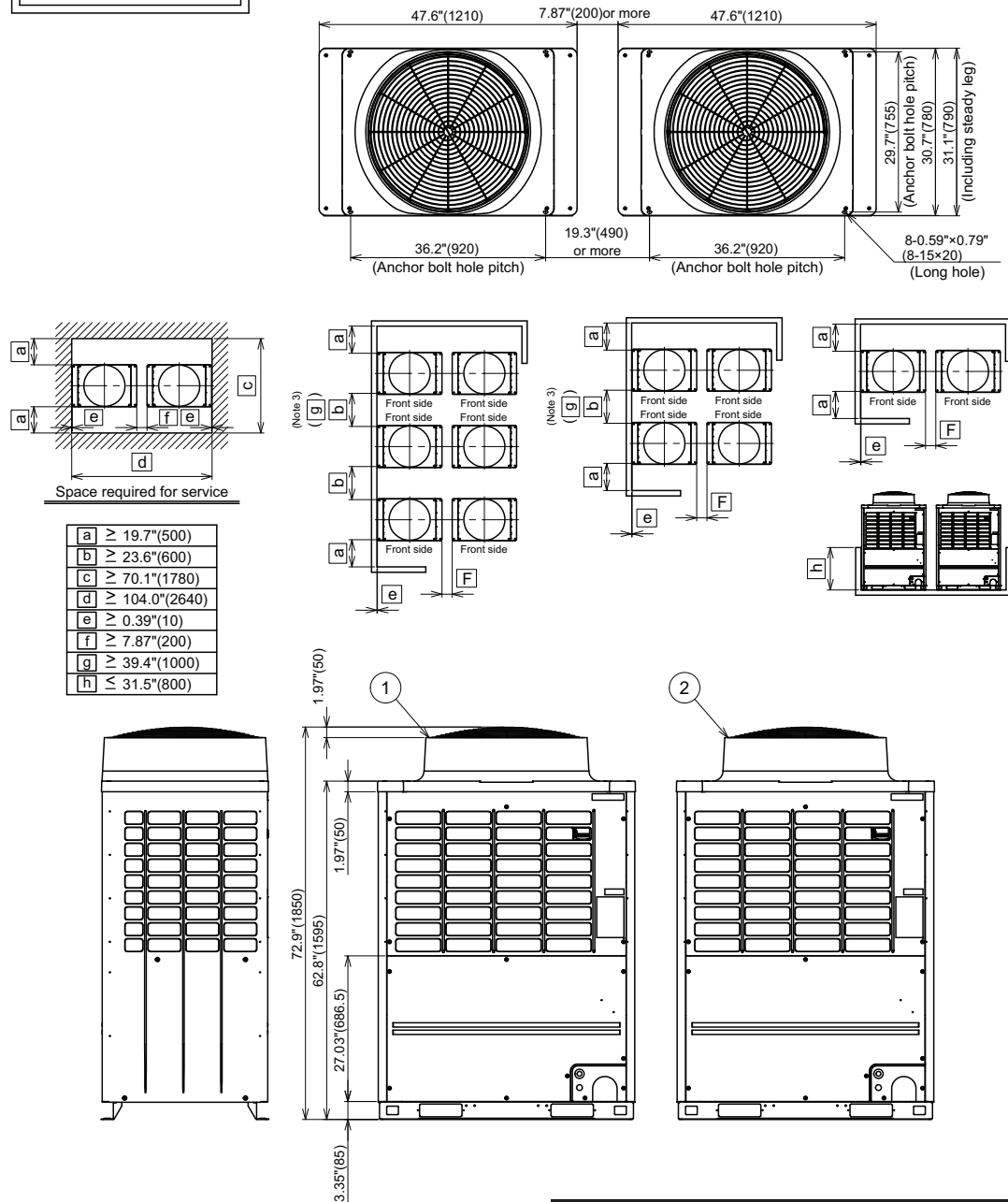
NOTE: Unit cabinet and coil slab shall be capable of withstanding 500-hour salt spray test in accordance with the ASTM (American Society for Testing and Materials, U.S.A.) B-117 Standard.

DIMENSIONAL DRAWING

OUTDOOR UNIT COMBINATION: HEAT PUMP/DUAL UNIT

MMY-AP2166HT6P-UL

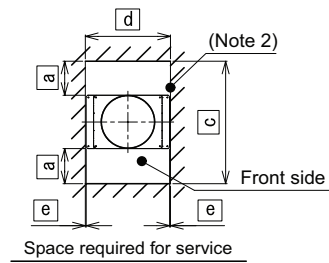
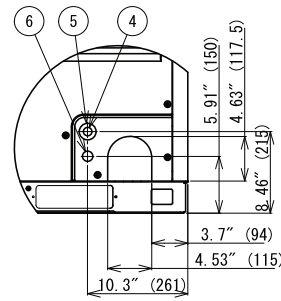
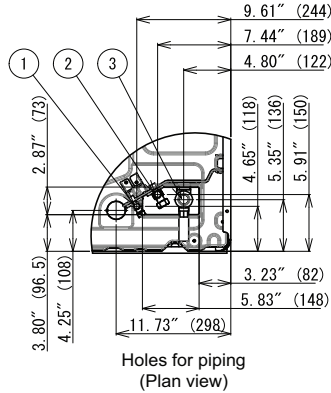
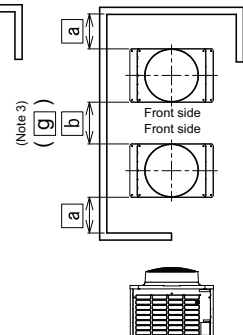
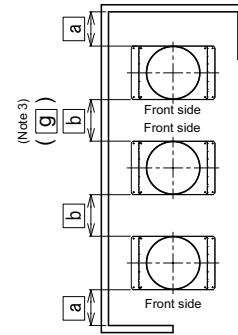
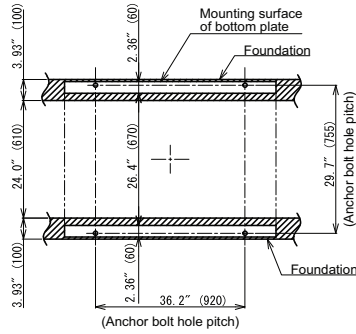
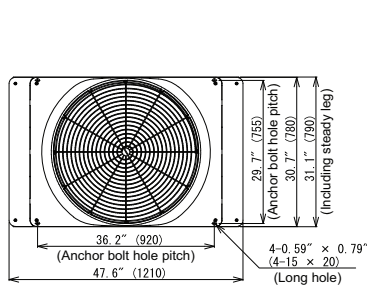
Two units connected



Model name	Outdoor unit	
	① Header unit	② Follower Unit
MMY-AP2166HT6P-UL	MMY-MAP1206HT6P-UL	MMY-MAP0966HT6P-UL

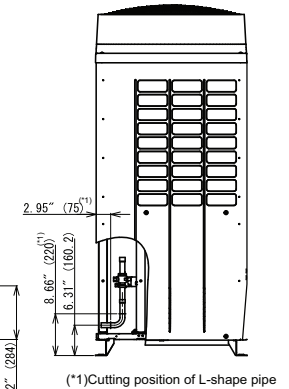
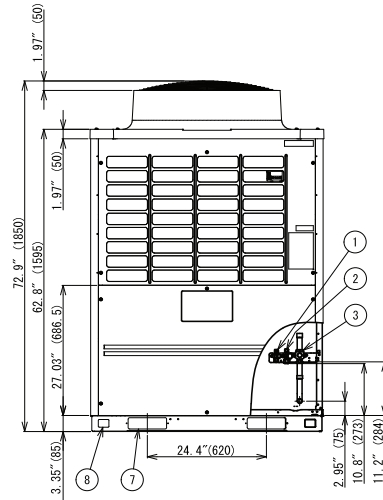
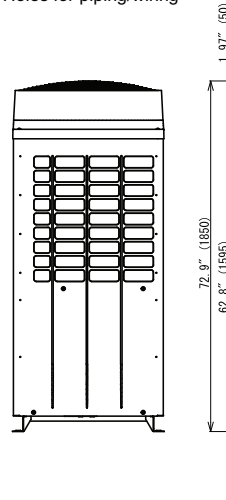
DIMENSIONAL DRAWING

OUTDOOR UNIT: HEAT PUMP/SINGLE UNIT MMY-MAP1206HT6P-UL



a	≥ 19.7" (500)
b	≥ 23.6" (600)
c	≥ 70.1" (1780)
d	≥ 48.4" (1230)
e	≥ 0.39" (10)
g	≥ 39.4" (1000)
h	≤ 31.5" (800)

No	Parts name	Remarks
①	Balance pipe connection port	Φ3/8" (9.5)
②	Liquid pipe connection port	Φ1/2" (12.7)
③	Discharge gas pipe connection port	Φ1" (25.4)
④	Knockout hole for power wiring 1	Φ0.87" (22.2)
⑤	Knockout hole for power wiring 2	Φ1.72" (43.7)
⑥	Knockout hole for control wiring	Φ1.06" (27)
⑦	Square hole (for freight handling)	4-2.36" x 7.87" (4-60x200)
⑧	Square hole (for hanging)	4-1.58" x 2.17" (4-40x55)

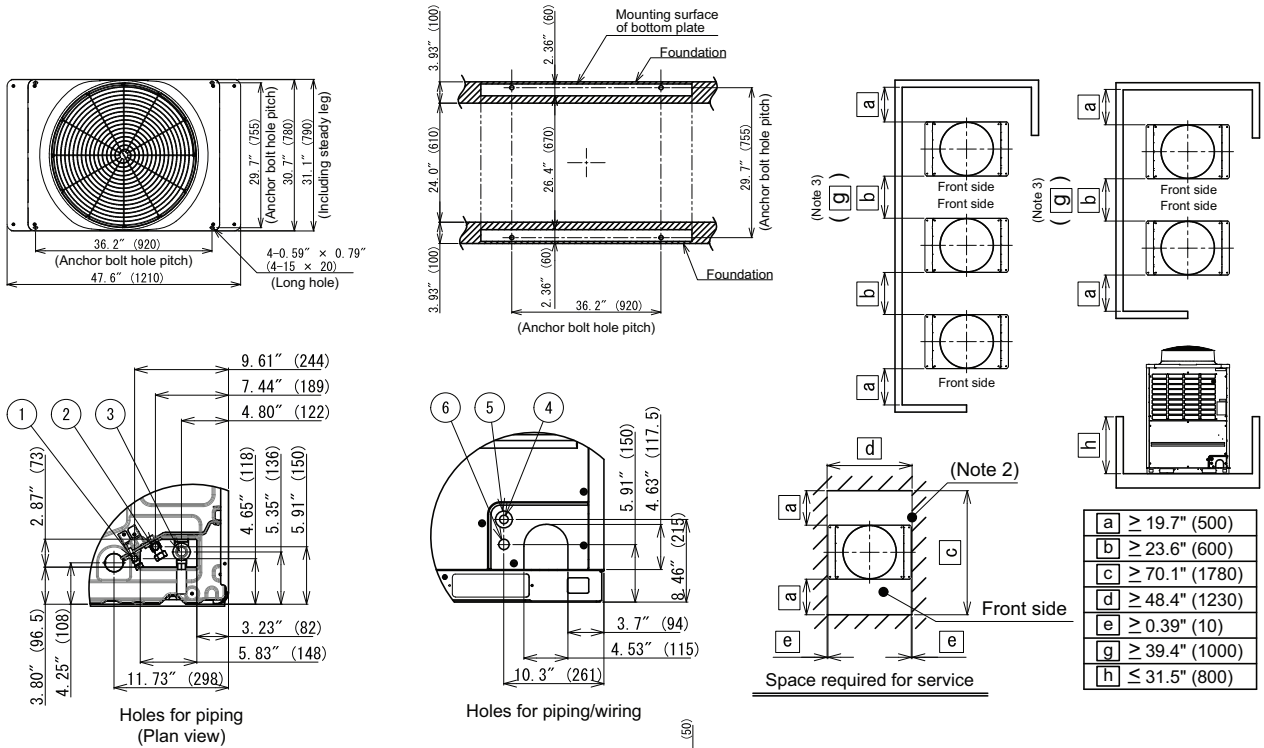


NOTES:

- A minimum clearance of 78.7 in. (2000 mm) is required above the unit.
- Any wall or barrier should not exceed 31.5 in. (800 mm) from the bottom of the unit.
- The main pipe in front of the unit must extend at least a minimum of 19.7 in. (500 mm) before it can turn 90 degrees in either left or right direction.
- Dimensions in parentheses are in millimeters.

DIMENSIONAL DRAWING

OUTDOOR UNIT: HEAT PUMP/SINGLE UNIT MMY-MAP0966HT6P-UL



No	Parts name	Remarks
①	Balance pipe connection port	Φ3/8" (9.5)
②	Liquid pipe connection port	Φ1/2" (12.7)
③	Discharge gas pipe connection port	Φ1" (25.4)
④	Knockout hole for power wiring 1	Φ0.87" (22.2)
⑤	Knockout hole for power wiring 2	Φ1.72" (43.7)
⑥	Knockout hole for control wiring	Φ1.06" (27)
⑦	Square hole (for freight handling)	4-2.36" × 7.87" (4-60×200)
⑧	Square hole (for hanging)	4-1.58" × 2.17" (4-40×55)

NOTES:

- A minimum clearance of 78.7 in. (2000 mm) is required above the unit.
- Any wall or barrier should not exceed 31.5 in. (800 mm) from the bottom of the unit.
- The main pipe in front of the unit must extend at least a minimum of 19.7 in. (500 mm) before it can turn 90 degrees in either left or right direction.
- Dimensions in parentheses are in millimeters.

