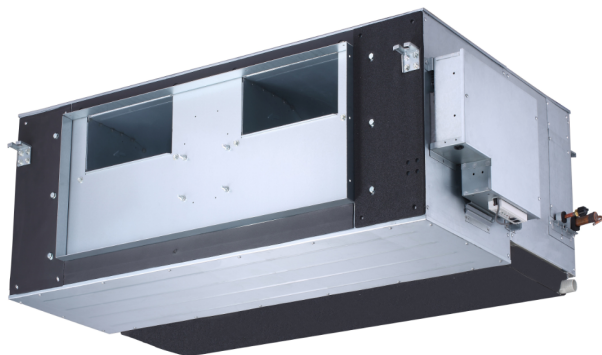


VRF Indoor Unit 40VMH096---3—High Static Duct



Submittal Data

Job Name _____ Location _____
Tag _____



STANDARD FEATURES

- Ducted Supply and Return Opening
- Three Fan Speeds - High, Medium and Low
- Built in EXV (Electronic Expansion Valve) for Install Ease

| INDOOR UNIT MODEL | | 40VMH096---3 |
|--------------------------------|---------|--------------------|
| PERFORMANCE | | |
| Cooling Rated Capacity | Btu/h | 97,350 |
| Sensible Cooling Capacity | Btu/h | 61,690 |
| Heating Rated Capacity | Btu/h | 108,000 |
| Airflow (H / M / L) | CFM | 2824 / 2400 / 2076 |
| Sound Pressure (H / M / L) | dBA | 56.4 / 54.7 / 52.4 |
| ELECTRICAL | | |
| Power Supply | V/Ph/Hz | 208-230/1/60 |
| Power Consumption (Input) | W | 395 + 395 |
| Minimum Circuit Amps (MCA) | A | 10.2 |
| Maximum Overcurrent Protection | A | 15.0 |
| Motor Type | | DC |

| PHYSICAL DATA | | |
|--|--------|------------|
| Pipe Connection Size - Liquid | in. | 3/8 (OD) |
| Pipe Connection Size - Suction | in. | 7/8 (OD) |
| Pipe Connection Size - Drain | in. | 1-5/8 (OD) |
| Minimum External Static Pressure (ESP) (Factory Default) | in. wg | 0.2 |
| Maximum External Static Pressure (ESP) | in. wg | 1.0 |
| Refrigerant | | R-410A |
| Unit Width | in. | 56-11/16 |
| Unit Height | in. | 20 |
| Unit Depth | in. | 36-13/32 |
| Net Weight | lb | 254.2 |

ACCESSORIES

- ☐ Wireless Remote Controller 40VM900001
- ☐ Wired Remote Controller - Non-Prog. 40VM900002
- ☐ Wired Remote Controller - Prog. 40VM900003
- ☐ Touch Screen Wired Controller 40VM900005
- ☐ Touch Screen Central Controller 40VM900006

DIMENSIONAL DRAWING INDOOR UNIT HIGH STATIC DUCT 40VMH096---3

